

11 JUL 1925

With or Without Disconnected Erections.

STEEL STEAMER.

Received at London Office

Date of completion of report 6 July 1925 Port of Trieste
 Survey held at Trieste Date, First Survey May 1 Last Survey June 27 1925
 No. 6690
 Rig FORE & AFT.

On the (State if Single, Twin, or Triple Screw) S/S. IZ RADA

TONNAGE under 3265.46 CLASS 100 A1.

Do. between Tonnage Dk. and 3rd and 4th Dk. 3265.46 Breadth (greatest moulded) 50.85

Total under Upper Dk. 11.16 Depth, at middle of length from top of keel to top of upper deck beams at side 84.00

Do. of Poop 57.41 Transverse Number 74.85

Do. of R.Q.Dk. 88.79 Length on deck from fore part of stem to after part of stern post 360.00

Do. of Bridge House 47.88 Longitudinal Number 37630

Do. of Houses on Dk. 55.56 Depth "d," at middle of length (See Secs. 2 & 13) 15

Do. of excess of Hatchways 3525.66 Proportions—Depths to Length—Upper Deck Beam at side to top of keel 15

Do. above Crown of Engine Room 111.02 " " Long Bridge Deck Beam at side to top of keel 15

Gross Tonnage 3414.64 Residence ZAGREB.

Less Crew Space 1128.21 Port belonging to TRIBROVNIK.

Less above Crown of Engine Room 76.92

TONNAGE FOR FEES 2209.46 Destined Voyage ADRIAT. TO U.K. If Surveyed while Building, Afloat, or in Dry Dock BOTH.

On Deck Rule	Feet.	Inches.	BREADTH—Moulded	Feet.	Inches.	DEPTH, ACTUAL—Top of Floors to top of Upper Dk. Beams	Feet.	Inches.	No. of Decks with flat laid	No. of Tiers of Beams
360	00		50	3		30	6		ONE	ONE
Length	360.2		breadth	50.35		depth	81.55			
						Moulded depth, ft.	84	ins.	0	
						To Bridge Dk.			Round of Upper Dk. Beam, Actual	11 ins.
						To Upper Dk.				
FRAMING.						PILLARS.				
Inches in Ship	Inches in Ship	Inches in Ship	Inches per Rule Or as Approved	Inches per Rule Or as Approved	Inches per Rule Or as Approved	Inches in Ship	Inches in Ship	Inches in Ship	Inches per Rule Or as Approved	Inches per Rule Or as Approved
12	3 1/2	3 1/2	20/40			PILLARS In 'tween Deck, size and spacing				
7	3 1/2	19/40				Hold				
3 1/2	3	15/40				Quarter 'tween Dks.,				
						in Hold				
36						KEELSONS & STRINGERS.				
24						CENTRE LINE KEELSON, Vertical Plate above				
24						floors, Through Plate, or Intercostal Plate				
3 1/2	3 1/2	15/40				Rider Plate				
3	3	15/40				Flat Plate Keel Angles				
12						Horizontal Plates on Floors				
42		15/40				Angles or Bulb Angles				
42		19/40				SIDE KEELSONS, Number				
42		18/40				Angles or Bulb Angles				
3 1/2	3 1/2	15/40				Plate above floors, for length				
3	3	15/40				Intercostal Plate, for length				
12						Attached to outside Plating with Angle				
42		15/40				BILGE KEELSON, Angles				
42		15/40				Intercostal Plate for length				
36						Attached to outside Plating with Angle				
42		15/40				SIDE STRINGERS, Number 2 FOR 1 AFT.				
42		15/40				Angles				
4 1/2	4 1/2	26/40				Intercostal Plate, for length				
4	4	22/40				Attached to outside plating with Angle				
ONE	15/40	ENG. 13.5	19/40	Two		Upper Deck Stringer Plate, br'dth & thickness				
3	3	15/40				(clear of Bridge)				
32	19/40	ENG. 13.5	22/40			br'dth & thickness				
4	4	19/40				(in way of Bridge)				
3 1/2	3	15/40				Angle (clear of Bridge)				
32	19/40	ENG. 13.5	22/40			Tie Plate at sides of Hatchways				
4	4	19/40				Deck. Iron or Steel, for lng.				
3 1/2	3	15/40				Thickness (clear of Bridge)				
32	19/40	ENG. 13.5	22/40			(in way of Bridge)				
4	4	19/40				Wood Deck. Material & thickness				
32	19/40	ENG. 13.5	22/40			Second Deck Stringer Plate, br'dth & thickness				
4	4	19/40				Angles on ditto, No.				
32	19/40	ENG. 13.5	22/40			Tie Plates outside Hatchways				
4	4	19/40				Deck. Iron or Steel, for lng.				
32	19/40	ENG. 13.5	22/40			Wood Deck. Material & thickness				
4	4	19/40				Third Deck Stringer Plate, br'dth & thickness				
32	19/40	ENG. 13.5	22/40			Angles on ditto, No.				
4	4	19/40				Tie Plates, outside Hatchways				
32	19/40	ENG. 13.5	22/40			Deck. Material and thickness				
4	4	19/40				Fourth and Fifth Deck Stringer Plate, br'dth & thickness				
32	19/40	ENG. 13.5	22/40			Angles on ditto, No.				
4	4	19/40				Tie Plates outside Hatchways				
32	19/40	ENG. 13.5	22/40			Deck. Material & thickness				
4	4	19/40				Poop Deck Stringer Plate, breadth & thickness				
32	19/40	ENG. 13.5	22/40			Angle on ditto				
4	4	19/40				Tie Plates				
32	19/40	ENG. 13.5	22/40			Deck. Material and thickness				
4	4	19/40				Bridge Deck Stringer Plate, br'dth & thickness				
32	19/40	ENG. 13.5	22/40			Angle on ditto				
4	4	19/40				Tie Plates				
32	19/40	ENG. 13.5	22/40			Deck. Material and thickness				
4	4	19/40				Forecastle Deck Stringer Plate, br'dth & thickness				
32	19/40	ENG. 13.5	22/40			Angle on ditto				
4	4	19/40				Tie Plates				
32	19/40	ENG. 13.5	22/40			Deck. Material and thickness				

* If Iron or Steel Deck, state if whole or part, and if Wood Deck is laid thereon.

W258-0201 1/2

Lloyd's Register

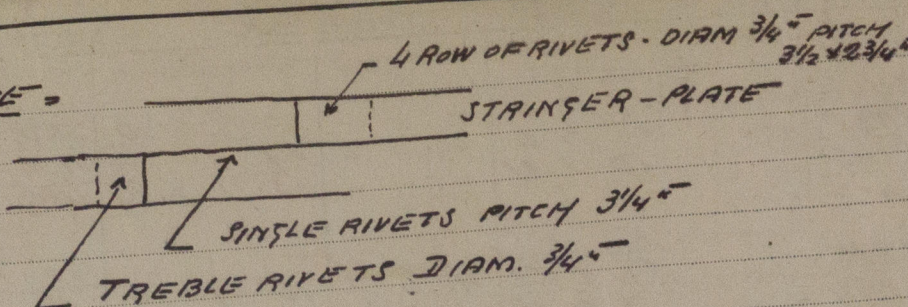
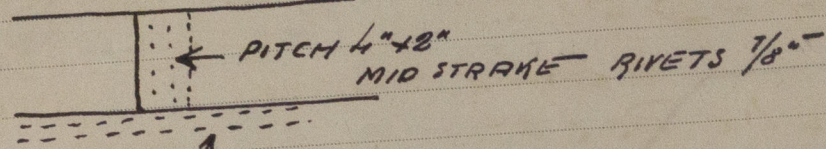
WEB FRAMES. In Fore Body, No. and spacing. No. of Side Stringers. WEB-FRAMES, In E. & B. Space, No. and spacing. WEB-FRAMES, In After Body, No. and spacing. BULKHEADS. STIFFENERS. FORGINGS or CASTINGS. KEEL, Bar, depth and thickness. STEM, moulding and thickness. STERN-POST for Rudder do. do. RUDDER-A x D* Table 22. Speed. Main-Piece, diameter at head. RUDDER, how constructed. CAST STEEL ARM & PLATES. THICKNESS OF PLATES OR SINGLE PLATE. Can the Rudder be unshipped afloat? Manufacturer's name or trade mark of the Iron or Steel (state process of manufacture of Steel) used for Frames, Floors, Beams, Keelsons, Tie and Stringer Plates, Plating, &c. PLATING. STRAKES. AS IN SHIP. PER RULE OR AS APPROVED. EDGES. BUTTS. RIVETING. BUTTS. IF LAPPED. SHEER. B. DK. SHEER. UPPER DECK. Stringer Plate. Second Deck. Stringer Plate. FRAMES extend in one length from. REVERSED FRAMES on floors and frames extend from. MASTS, SPARS, &c. LOWER MASTS. Bowsprit. Topmasts, Yards and Remainder of Spars. Riggings, Material and Size, Shrouds. Sails.

EQUIPMENT No. LETTER JC ANCHORS. TONNAGE U. D. K. OR PLATING No. FOR TRAWLERS. Number of Certificate. Anchors. WEIGHT, EX. STOCK. WEIGHT OF STOCK. TEST, PER CERTIFICATE. WEIGHT REQUIRED BY TABLE 31. Description of Anchor. Makers. Where and when tested and Superintendent. 18746 1st Bower. 18905 2nd. 18745 3rd. 18812 4th. 12894 Stream. 12894 Kedg. CHAIN CABLES. HAWSEERS AND WARPS. Boats. Steering Gear. Steam. Steering Gear, Hand. Pumps, Number. Windlass. Engine Room Skylights. Coal Bunker Openings. Number of Scuppers, and numbers and dimensions of Freeing Ports, &c. Ceiling in Holds, thickness and material. Cargo Hatchways. State size No. 1 Hatch (Forward). Number of Web Plates, Shifting Beams and Fore and Afters to each Hatch. Bulwarks, height above deck and description. The foregoing is a correct description. Builder's Signature. Correspondence. Workmanship. Are the butts of plating planed or otherwise fitted? Is the riveted work properly closed? Are the liners between the frames and plates solid single pieces? to plate, &c., conform well to each other? from the faying surfaces? Are the butts of Plating, Stringers, &c., properly shifted and strapped? Have all the upper and weather decks been tested as required by the Rules (Sec. 26, par. 20)? Have all the gutterways been tested as required by the Rules (Sec. 26, par. 20)? General Remarks (State quality of workmanship, &c.). The quality of the workmanship and material is good. The hull is in good repair and in dry dock and the scantling compared with the approved plan and found correct. now found slight running 183 for clonification and generally repaired as recommended (Please see Report of survey for repairs). Regarding sheer strake thickness (Please see closing letter 30/12/1924 addressed to the Geneva surveyor) now drilled and found with 3/4" plate at centre 32/40" at side 33/40" in walls + 43% at end 18/40" as per following sketch: 18/40" 32/40" 33/40" 33/40" 32/40" 18/40" MAIN SHEER STRAKE. AFTER BULKHEAD. FOR PEAK BULKHEAD. The Surveyor should state the Number of Report and Name of any Sister Vessel. Plans to be forwarded with F.E. Report showing vessel as built, and list of plans should be embodied in report. Freeboard. The amount of Entry Fee. Special Survey. Travelling Expenses, if any. State whether the Vessel has been built under Special Survey. I am of opinion this Vessel should be Classed. With, or without Freeboard, as condition of Class. Committee's Minute. Character assigned. 1925-020-852N

GENERAL REMARKS—

RIVETING: DECK PLATE

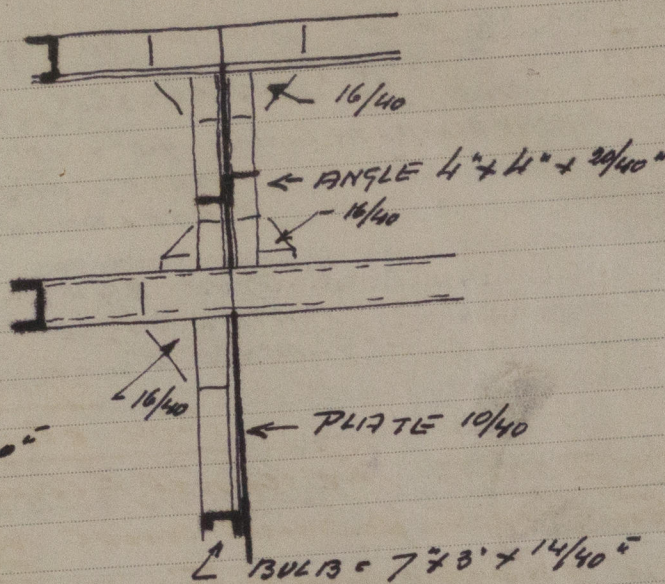
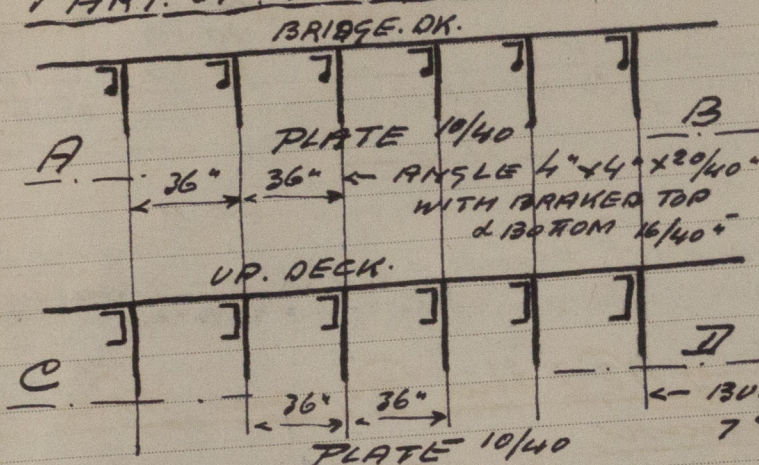
TANK TOP:



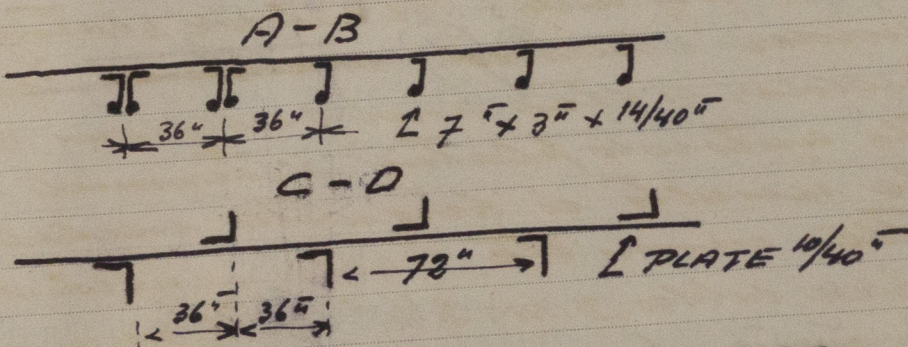
DOUBLED RIVETS DIAM. 7/4" PITCH 3" x 1 3/8"

Beams with deck plate rivets 7/8" pitch 5 1/2"

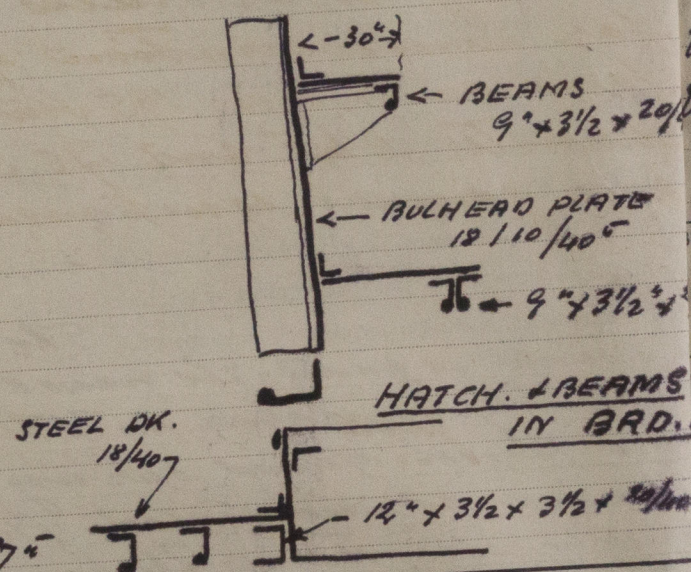
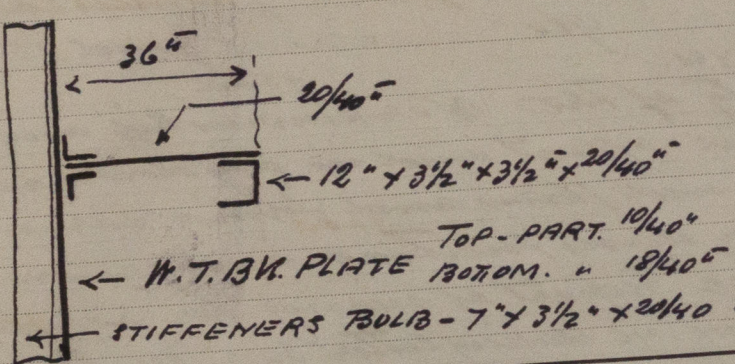
PART OF LONG BULKHEAD.



COLLISION BULKHEAD.



BOILER ROOM. W.T. BULKHEAD.



PARTICULARS FOR RECORD in the REGISTER BOOK.—Length of Poop 26.0 ft., R.Q.D. ft., Bridge 231.6 ft., Forecastle 23.0 ft.

No. and Material of Decks and No. of tiers of Beams (this information is to be given as it should appear in the Register Book)

Official No. 1 DK. STEEL F.K. 6 BM TO UP. DK. CEM. WIRELESS NO

State if Machinery is fitted aft

If bottom of Vessel has been coated Inside yes Outside yes give particulars of paint or other composition Paint a compound

PARTICULARS OF WATER BALLAST.—State whether the Double bottom is constructed on the cellular system.

Where Fitted.	*Length. Feet.	Water Capacity. Tons.	Where Fitted.
Double bottom, aft,	104.83	505.00	Fore peak tank,
Double bottom, under Engines and Boilers,	24.00	84.00	After peak tank,
Double bottom, if under Engines only,	24.00	84.00	Deep tank, aft,
Double bottom, if under Boilers only,	162.5	266.00	Deep tank, forward,
Double bottom, forward,		874.00	Other tanks, if fitted,
			(If necessary, furnish further information by sketch.)

* The wells are not to be included in the lengths of the tanks.

Order for Special Survey No. 3 Date 6.25 No. in builder's yard.

Surveyor's Signature

© 2019 Lloyd's Register Foundation