

Engine 16"-27 1/2"-43" WP 20004

Rule 311

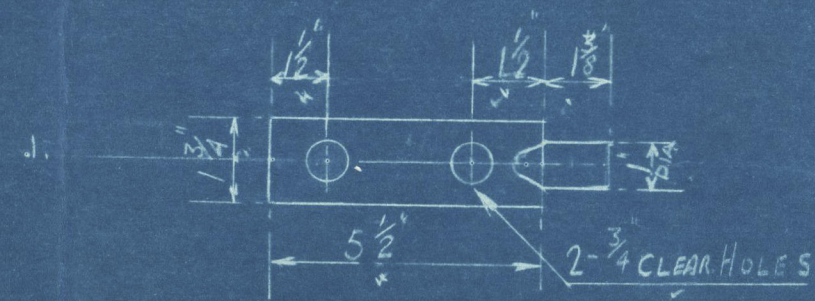
Shaft 8'-56"

Shaft 8'-98"

Propeller 9'-643"

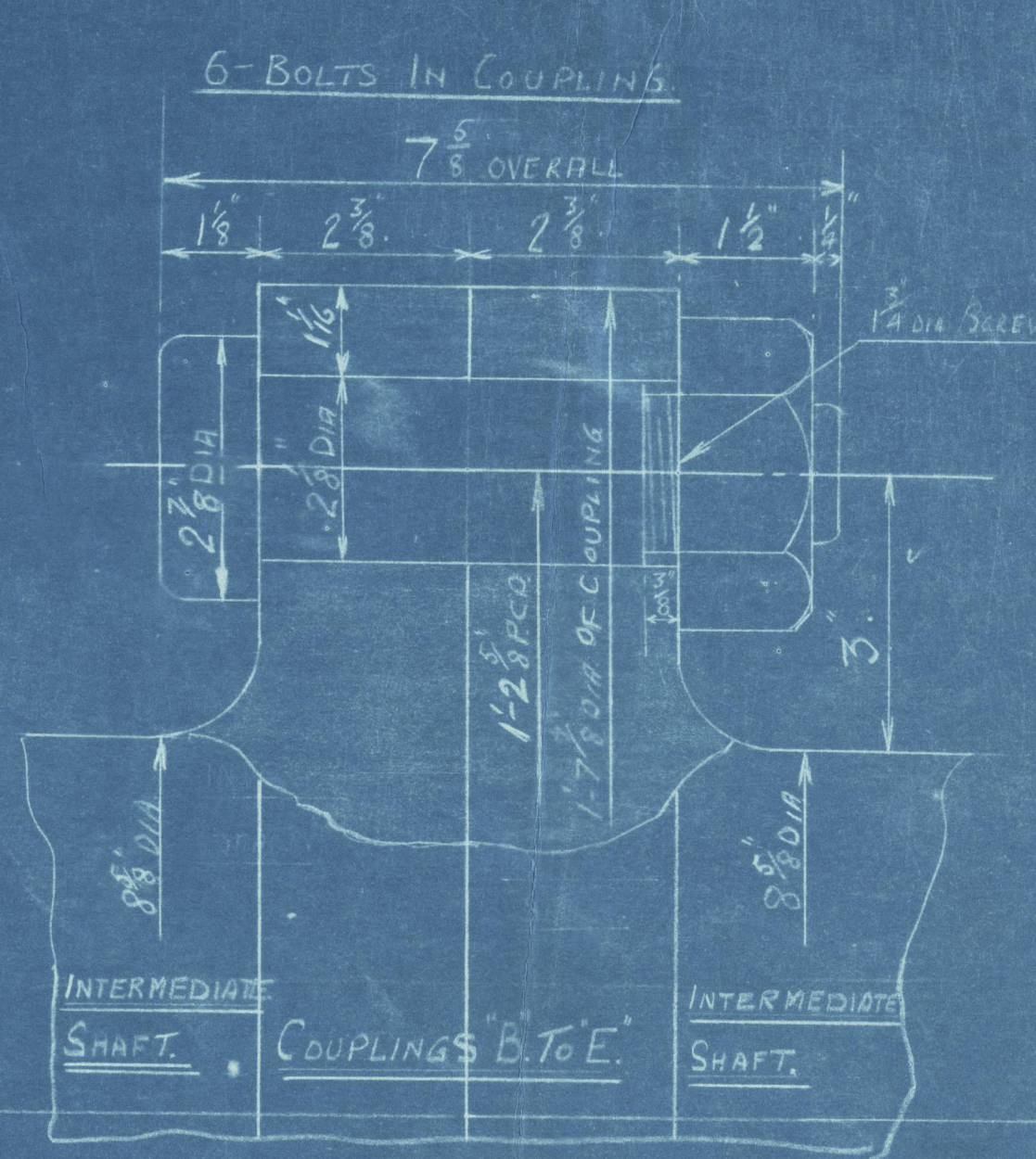
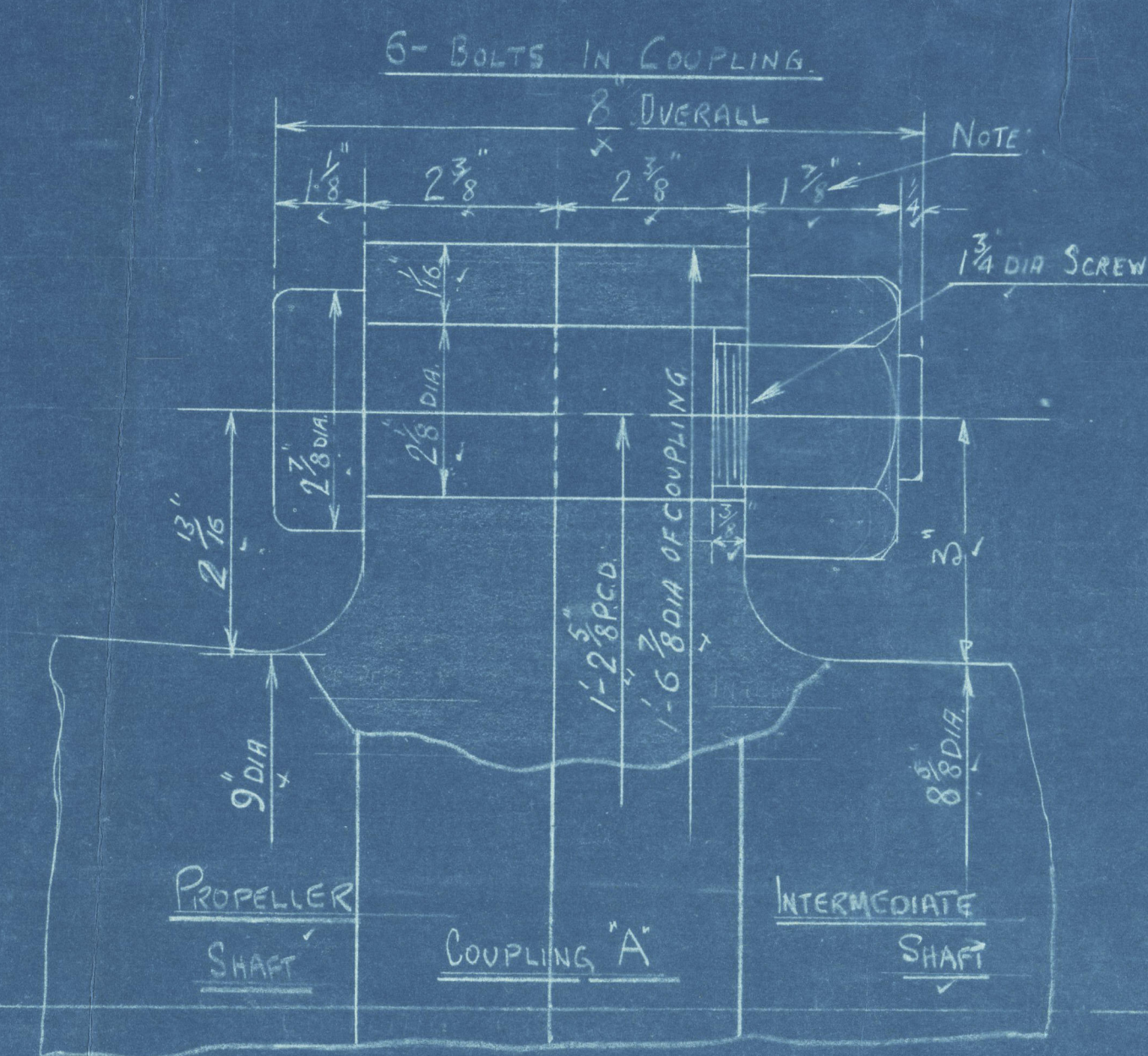
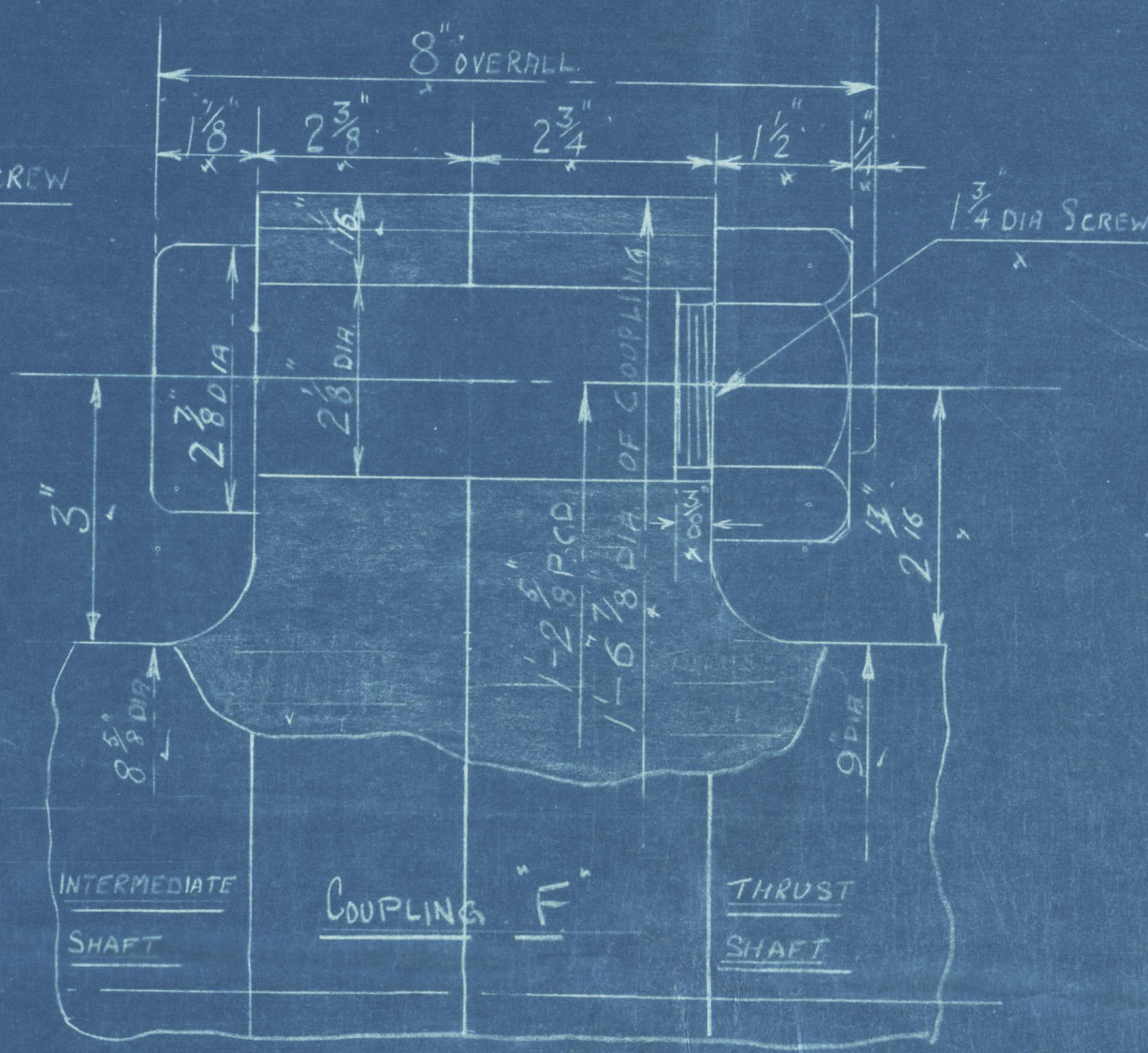
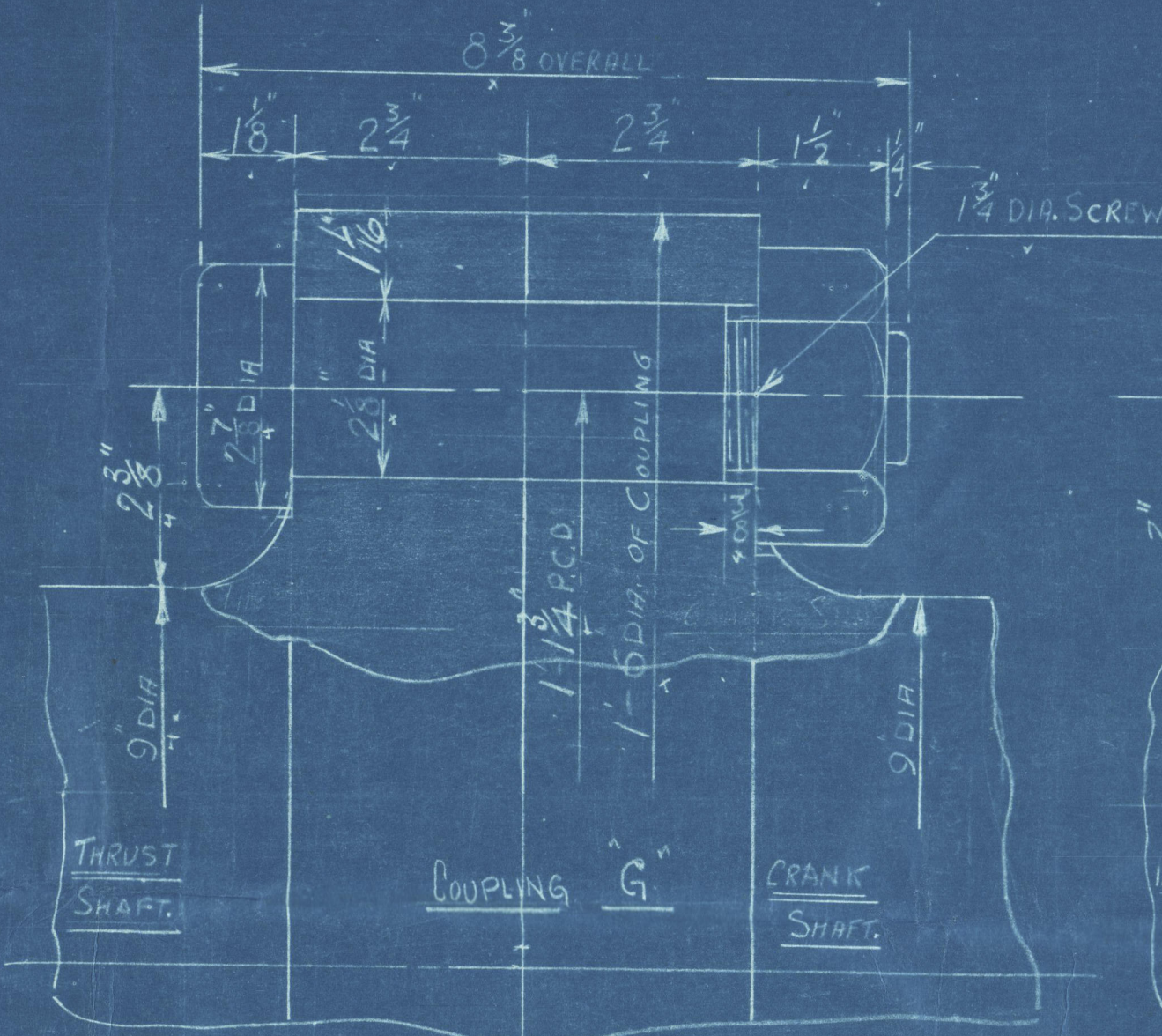
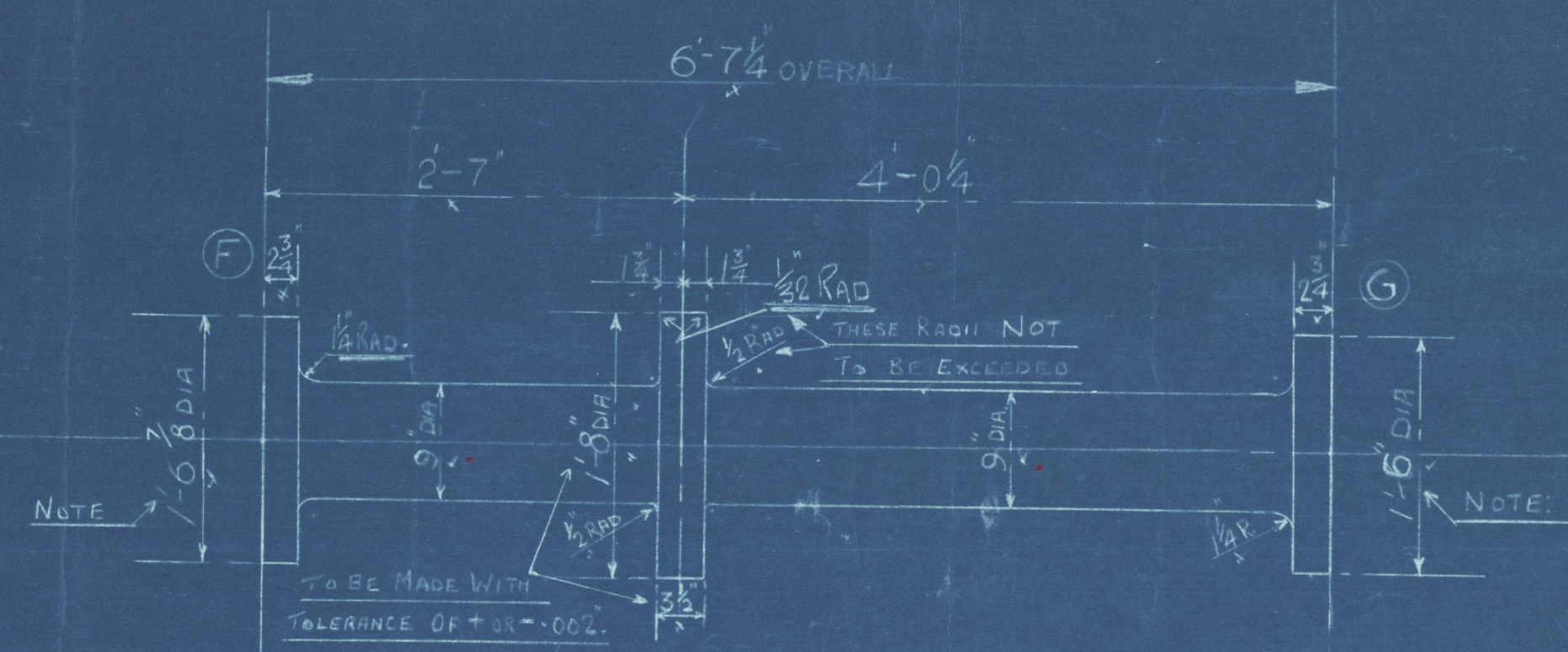
See app'd for 1/12/37

1/17/37



PROPELLER NUT LOCKING KEY

1-OFF STEEL



6-BOLTS IN COUPLING

COUPLING BOLTS

6-OFF WORKING 8'-0" OVERALL

12-OFF WORKING 8'-0" OVERALL

24-OFF WORKING 7'-5" OVERALL

6-OFF SPARE 7'-5" OVERALL

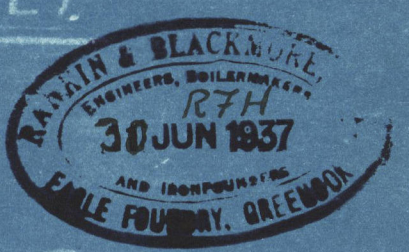
6-BOLTS IN EACH COUPLING

TO PASS LLOYDS SURVEY

SCALE 1" = 6" ONE FOOT

SHAFTING

ENG N° 1256



W256-0102