

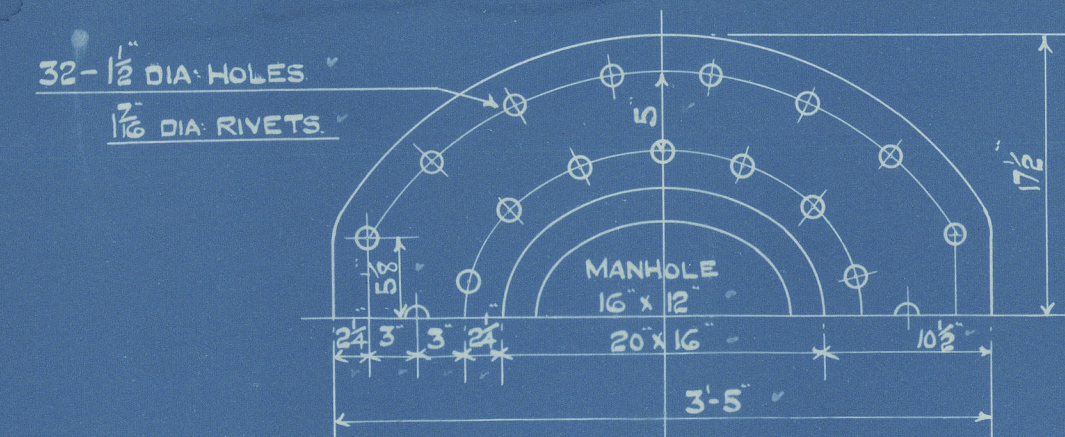
TENSILE STRENGTH OF MATERIALS

| | |
|---------------------------------|-------------------|
| CYL. SHELL PLATES & BUTT STRAPS | = 30 TO 34 TONS/D |
| GIRDER PLATES | 28 - 32 |
| MANHOLE DOUBLING | 27 - 30 |
| ALL OTHER PLATES & FURNACES | 26 - 30 |
| LONG STEEL STAYS | 28 - 32 |
| SCREW STAY & RIVET BARS | 26 - 30 |

WORKING PRESSURE 200 LBS/D

TEST 350

ALL PLATES OF STEEL
ALL STAYS
ALL RIVETS
ALL TUBES OF IRON



POSITION OF MANHOLE FIXED LATER

THESE TWO STAYS 3/4 DIA.
INSIDE NUTS 2 1/2 DEEP

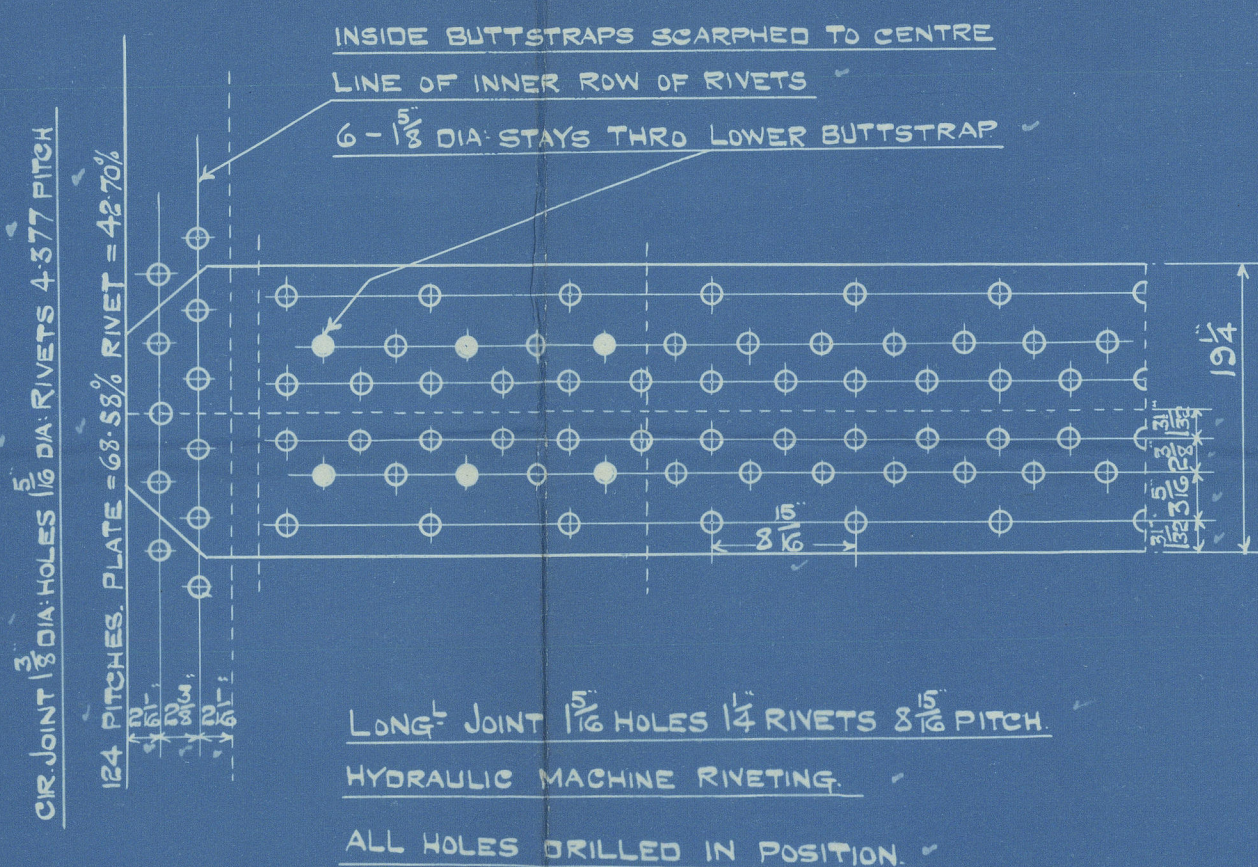
DIA OVER THREADS
TO BE NOT LESS THAN
3/4

STEEL STAY 2 1/4 DIA.
SCREWED 6 TPI INSIDE
NUT 1/2 DEEP

STEEL STAY 2 3/4 DIA.
SCREWED 6 TPI INSIDE NUT 1 1/2 DEEP

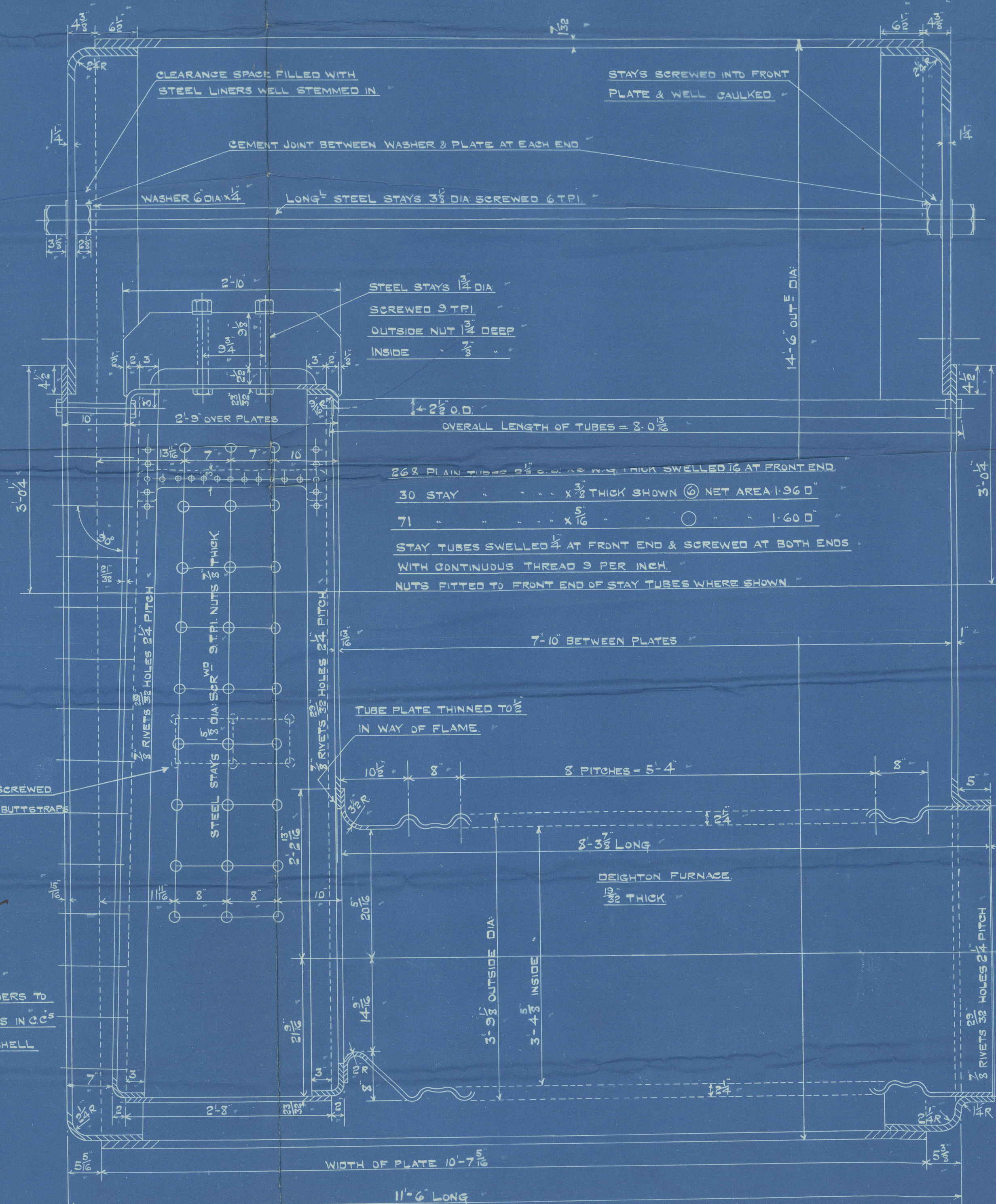
FLANGE 3/2 DEEP

ALL CC BACK STAYS
NUTTED AT BOTH ENDS
WHERE NECESSARY WASHERS TO
BE FITTED UNDER NUTS IN CC'S
SCREW STAYS THRO' SHELL
TO BE CAULKED



LONG JOINT 1/2 HOLES 1/2 RIVETS 3 1/2 PITCH
HYDRAULIC MACHINE RIVETING
ALL HOLES DRILLED IN POSITION

| | |
|------------------|-----------|
| OUTER BUTTSTRAPS | 1/2 THICK |
| INNER | 1/2 |
| PLATE | = 35.31% |
| RIVET | = 39.32% |
| COMBINED | = 38.43% |



TOTAL HEATING SURFACE (2 BOILERS) = 4660 D FT

TO LLOYDS SURVEY
TO BOARD OF TRADE SURVEY UP TO POINT OF TEST

Modified & Returned
J. C. WIDHAM, RICHARDSON
ENGINEERING DEPARTMENT
21 AUBURN
NEPTUNE TOWER
WALKER
BATTLE-ON-THE

96/ C 11 X
25-7-23

MAIN BOILERS.

SCALE 1" = 1 FOOT

| | |
|---------------------|---------|
| N ^o 2019 | DATE |
| 1164 | 20/7/23 |
| 1166 | 20/7/23 |

B.374.

TENSILE STRENGTH OF MATERIALS

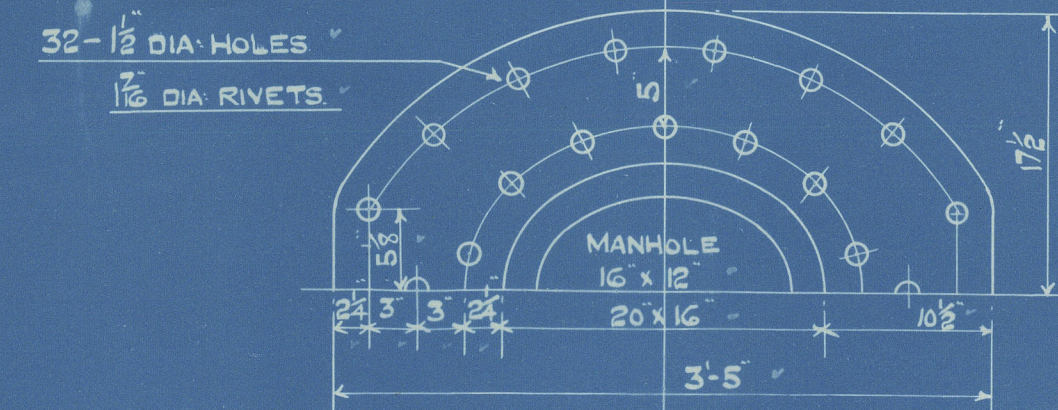
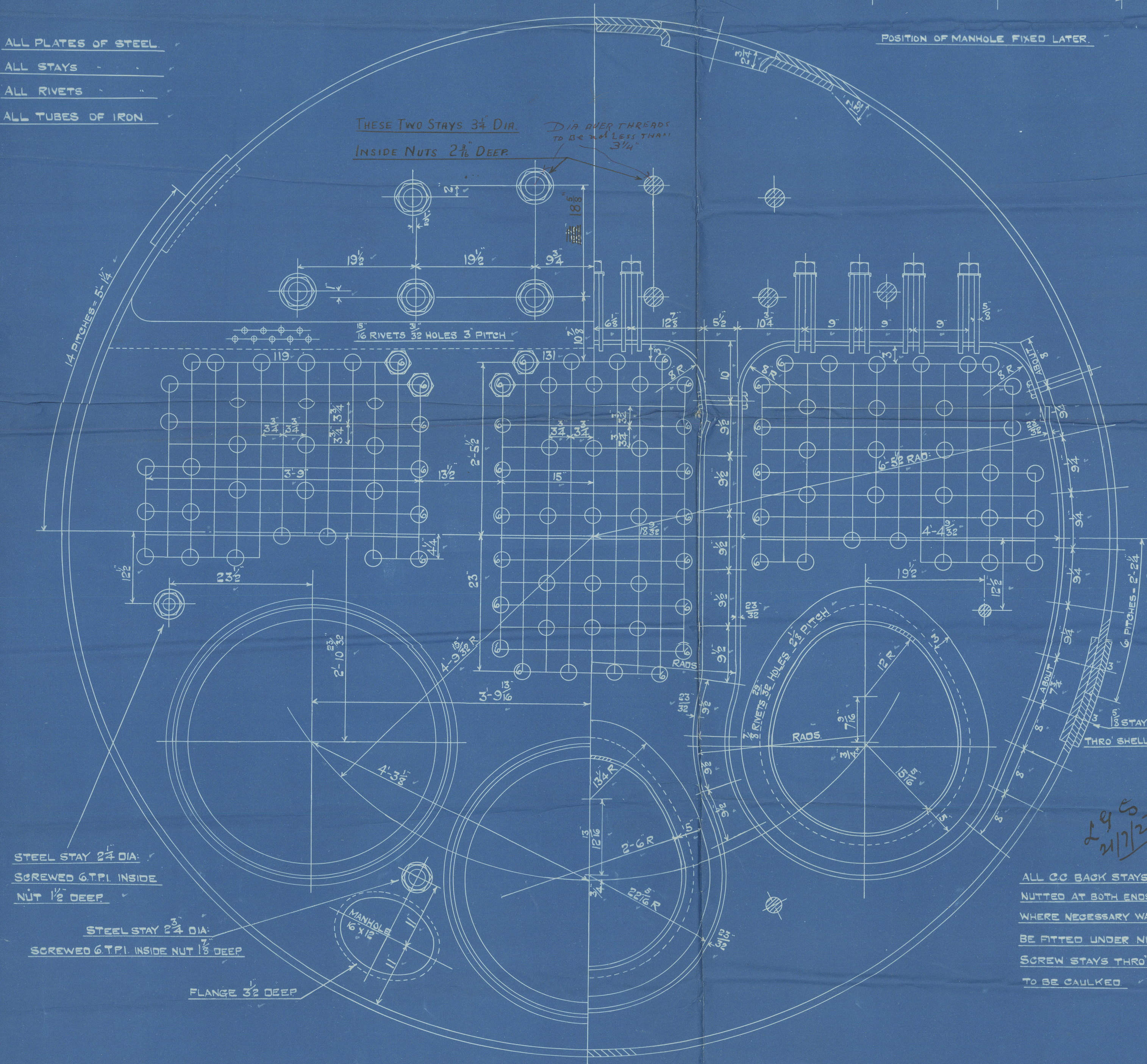
| | |
|---------------------------------|--------------------|
| CYL. SHELL PLATES & BUTT STRAPS | = 30 TO 34 TONS/0" |
| GIRDER PLATES | 23 - 32 |
| MANHOLE DOUBLING | 27 - 30 |
| ALL OTHER PLATES & FURNACES | 26 - 30 |
| LONG STEEL STAYS | 28 - 32 |
| SCREW STAY & RIVET BARS | 26 - 30 |

WORKING PRESSURE 200 LBS/0"

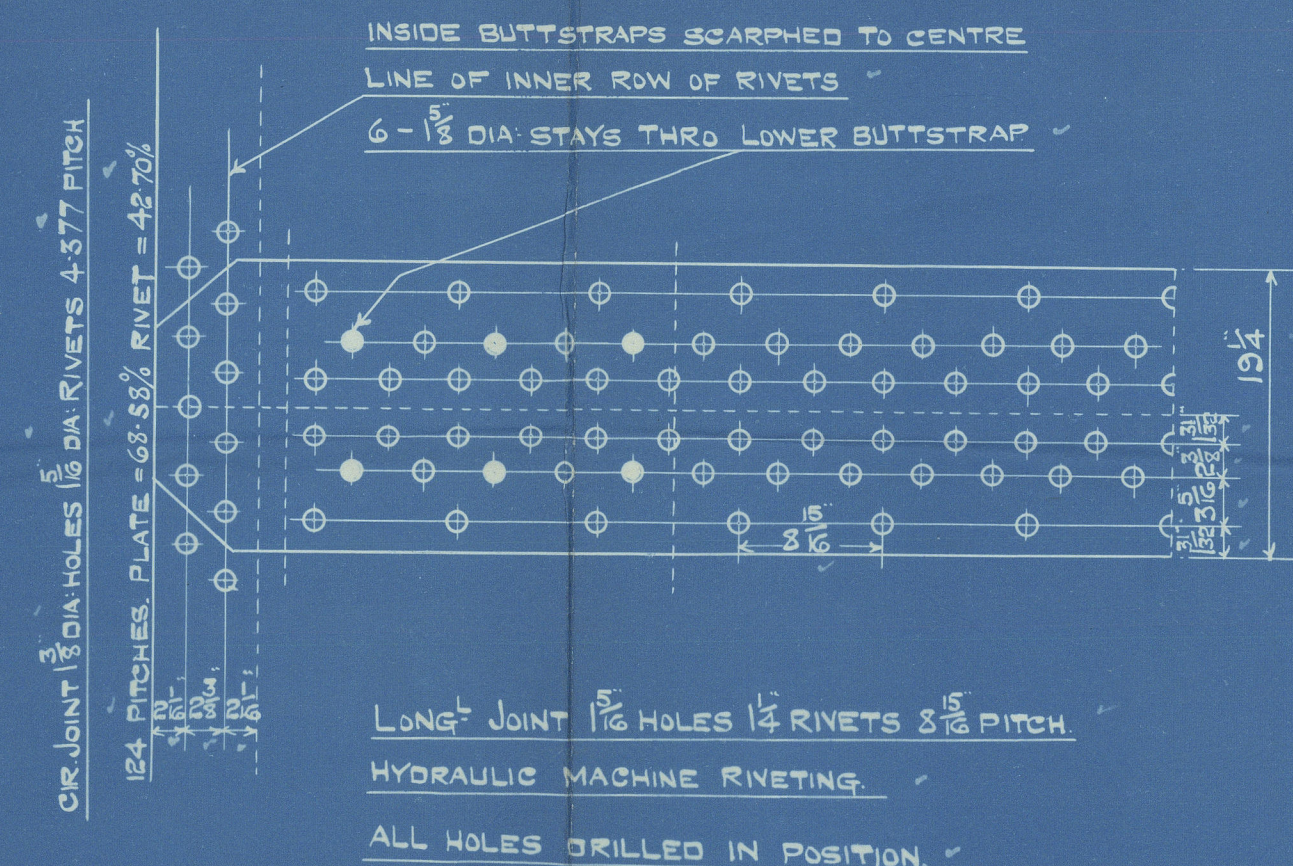
TEST 350

ALL PLATES OF STEEL
ALL STAYS
ALL RIVETS
ALL TUBES OF IRON

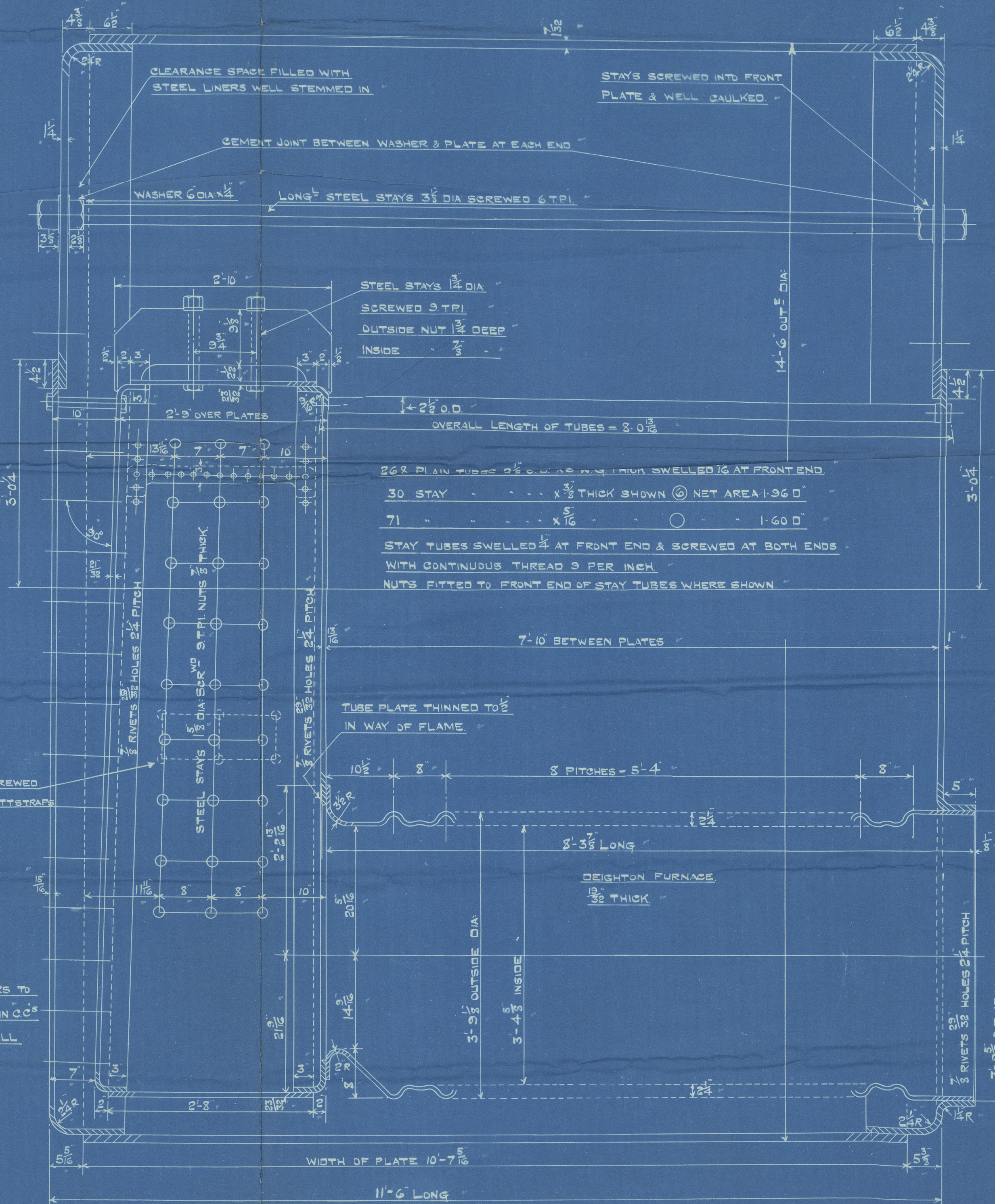
THESE TWO STAYS 3 1/2" DIA.
INSIDE NUTS 2 1/2" DEEP



POSITION OF MANHOLE FIXED LATER



OUTER BUTTSTRAPS 1/8" THICK
INNER 1/16"
PLATE = 85.31%
RIVET = 89.32%
COMBINED = 88.48%



TOTAL HEATING SURFACE (2 BOILERS) = 4660 0 FT

26.7.23

TO LLOYD'S SURVEY
TO BOARD OF TRADE SURVEY UP TO POINT OF TEST

Modified & Returned
WALKER



20.7.23

WALKER

For enclosure to
Messrs Lloyd's Surveyor
From
SWAN, HUNTER, & WIGHAM RICHARDSON, LTD.,
NEPTUNE WORKS, WALKER.

2 OFF (EACH N°)

MAIN BOILERS.

SCALE 1" = 1 FOOT

13374

N° 2019
DATE
1164 20/7/23
1166 20/7/23

S H + W N

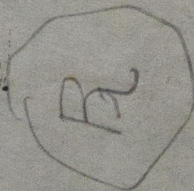
4/ - Boilers 1166 for Ship 1227.

up 200 lbs Test 350 lbs

Submitted to London 21/7/23

London approval 26/7/23

S H run advised 27/7/23



79633

"S.S. Oriskany"

NWC. 77633.

S.S. ORISKANY

NEWCASTLE ON TYNE.

Port No 77633.

W255-0295



© 2019

Lloyd's Register
Foundation

25000
- 07115

17885 A



© 2019

Lloyd's Register
Foundation