

RETURN BENDS INTEGRALLY FORGED WITH PIPES

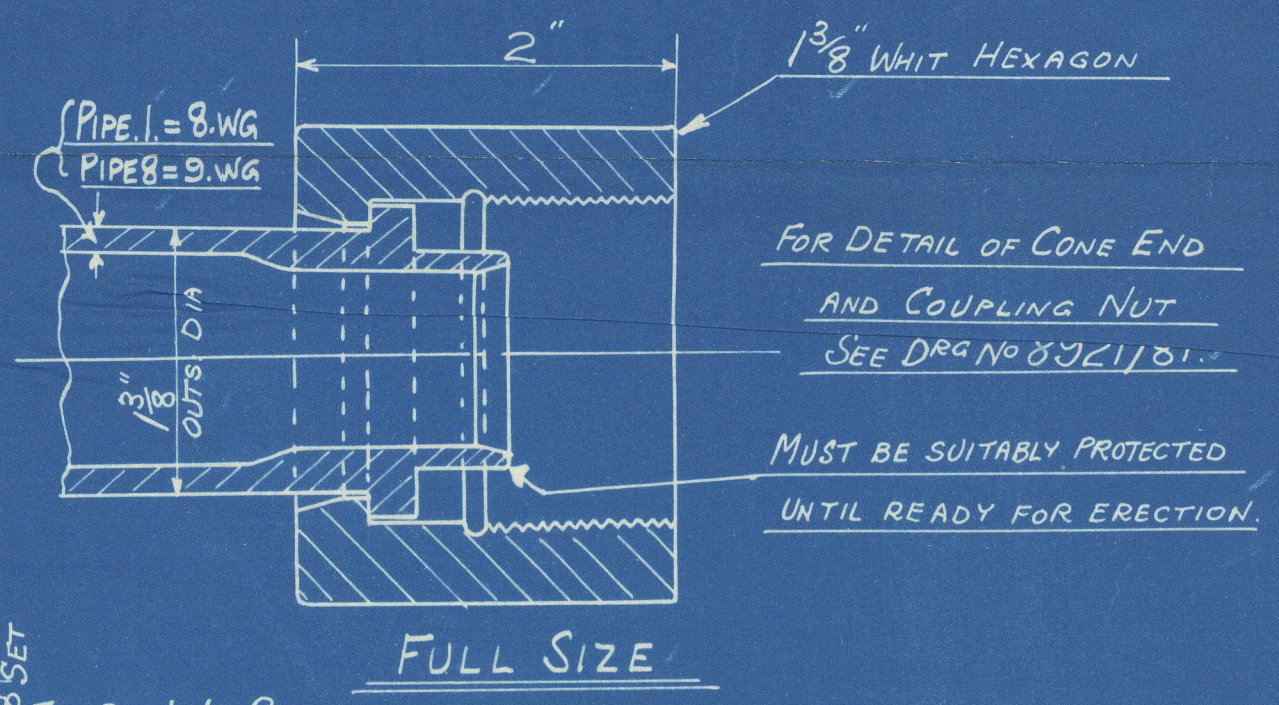
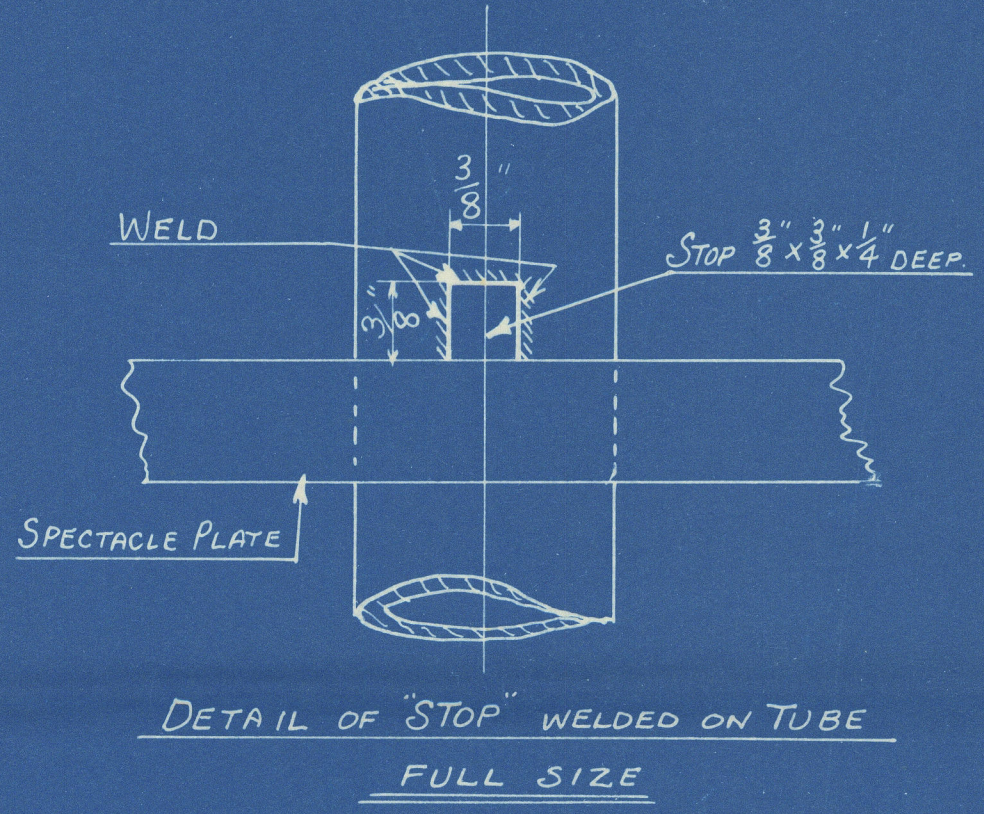
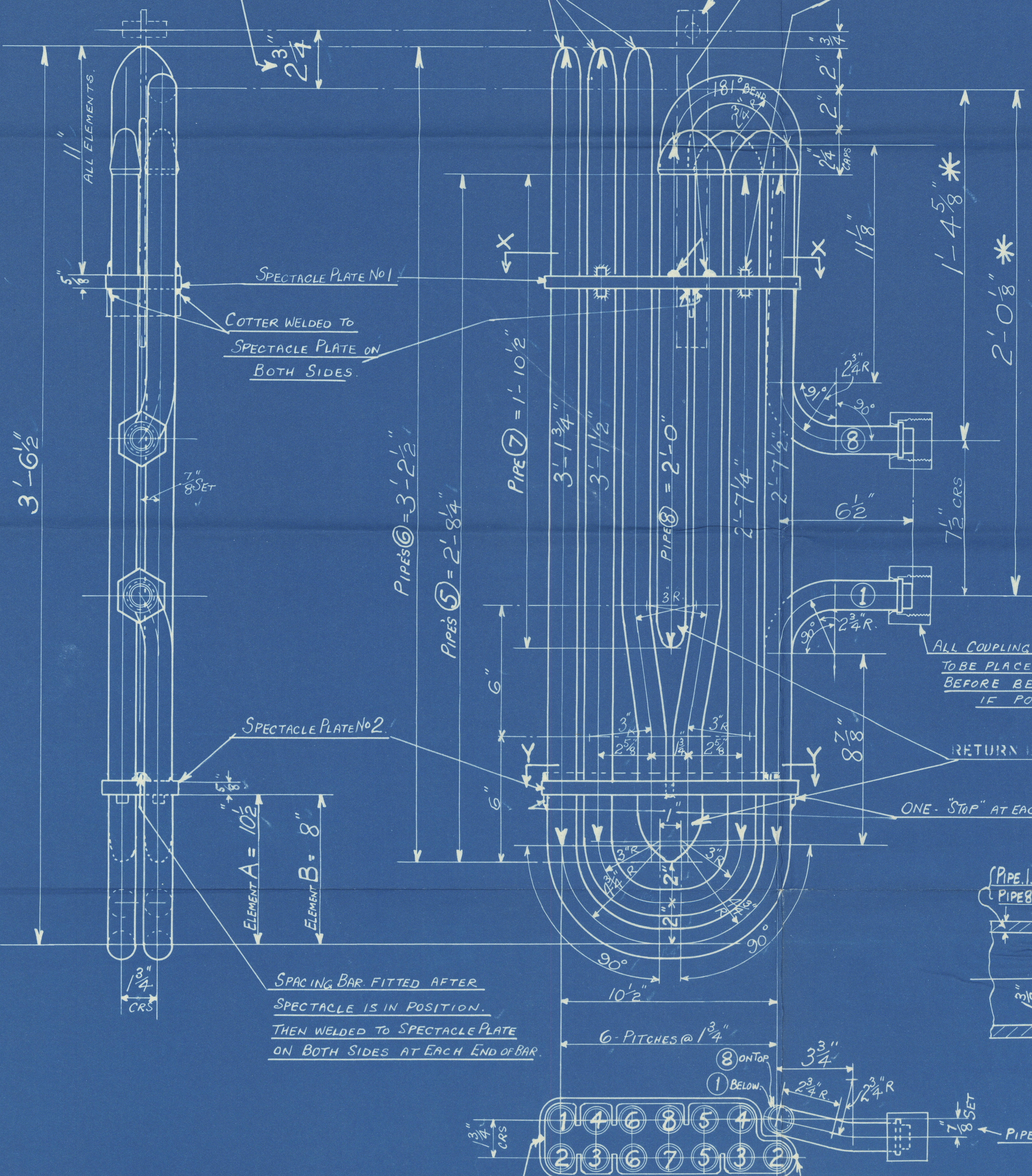
(M.E.L.SCO MAKE)

UPPER SPECTACLE PLATES WELDED TO ELEMENTS ON BOTH SIDES OF 2 PIPES AS SHOWN

"STOPS" WELDED TO ELEMENTS ON BOTH SIDES - WHERE SHOWN THUS

THIS DIMENSION MUST BE STRICTLY ADHERED TO.

ELEMENT HANGER  
DRG No 9157/50



SECTION X-X

SECTION Y-Y

LIST OF MATERIAL FOR ONE BOILER

MARK	DESCRIPTION	NO OFF PERSET	MATERIAL	PIPE LENGTHS BEFORE BENDING OR FORGING.							
				PIPE 1	PIPE 2	PIPE 3	PIPE 4	PIPES 5	PIPES 6	PIPE 7	PIPE 8
A	ELEMENT	12	S.D.S.	5' 2 1/2"	7' 2 1/2"	1' 9 1/2"	1' 9 1/2"	2' 3 1/2"	2' 3 1/2"	1' 11 1/2"	1' 11 1/2"
B	"	10	S.D.S.								
	SPECTACLE PLATE No 1	22	H.R.S.	PIPE ALLOWANCE INCLUDED IN ABOVE LENGTHS							
	" No 2	22	H.R.S.	FORGING MALE END = 2' 3 1/4"							
				" " RETURN END = 1							
	COUPLING NUTS	44	M.S.	DRAWING No							
	CAP ENDS	66	"	M.E. 351							
	STOPS WELDED ON ELEMENTS	176	STEEL	WORKS STOCK							
	SPACING BARS	22	H.R.S.	"							
	ELEMENT HANGER	22		9157/50							

SOLID DRAWN STEEL PIPES

PIPE'S 1 & 2 = 1 3/8" OUTS DIA. x 8 WG. THICK

ALL OTHER PIPES = 1 3/8" OUTS DIA x 9 WG THICK.

TO PASS LLOYDS SURVEY

WORKING PRESSURE 216 LBS PER SQ. INCH

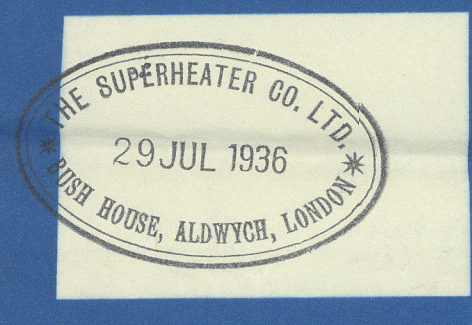
TEST 648

NOTES.

THE ONLY DIFFERENCE BETWEEN ELTS A & B. IS POSITION OF SPEC. PLATE No 2

- ALL STARRED DIMENSIONS TO BE WORKED TO AS ACCURATE AS POSSIBLE
- EVERY ELEMENT MUST HAVE A METAL TAG FIXED ON CLEARLY STATING IDENTIFICATION LETTER.

ORDER No'S	REF	CHK	DRAWING No'S
9157 M	9157 M		9157/30



THE SUPERHEATER CO LTD  
BUSH HOUSE LONDON W.C.2

TITLE ELEMENTS

T.S.S. "LEOPOLIMILLE"

Lloyd's Register Foundation

SCALE  
3" = ONE FOOT  
DOWN 9/8 TCD  
29/7/36