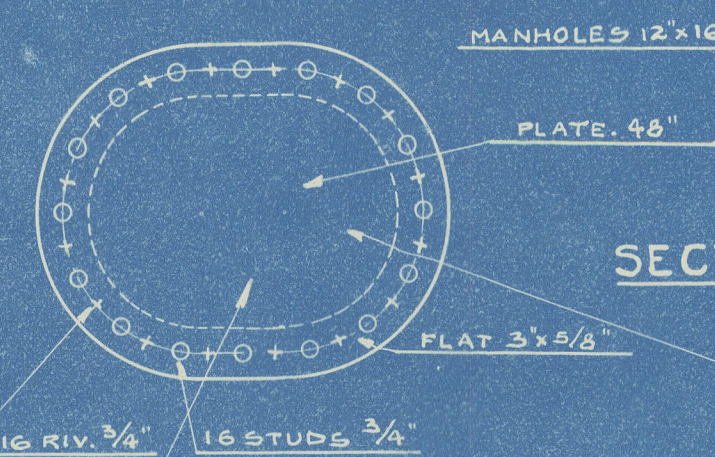
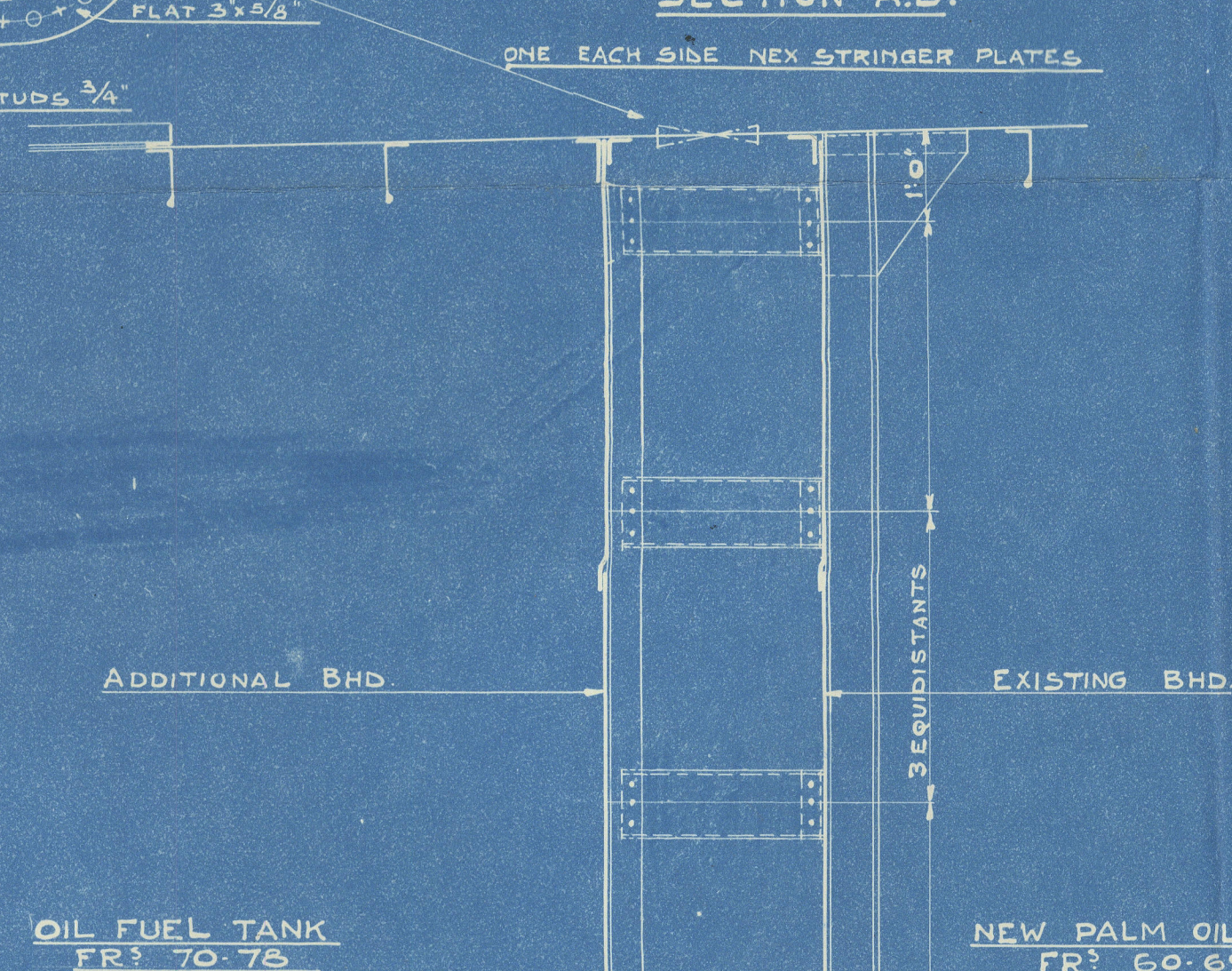


Office

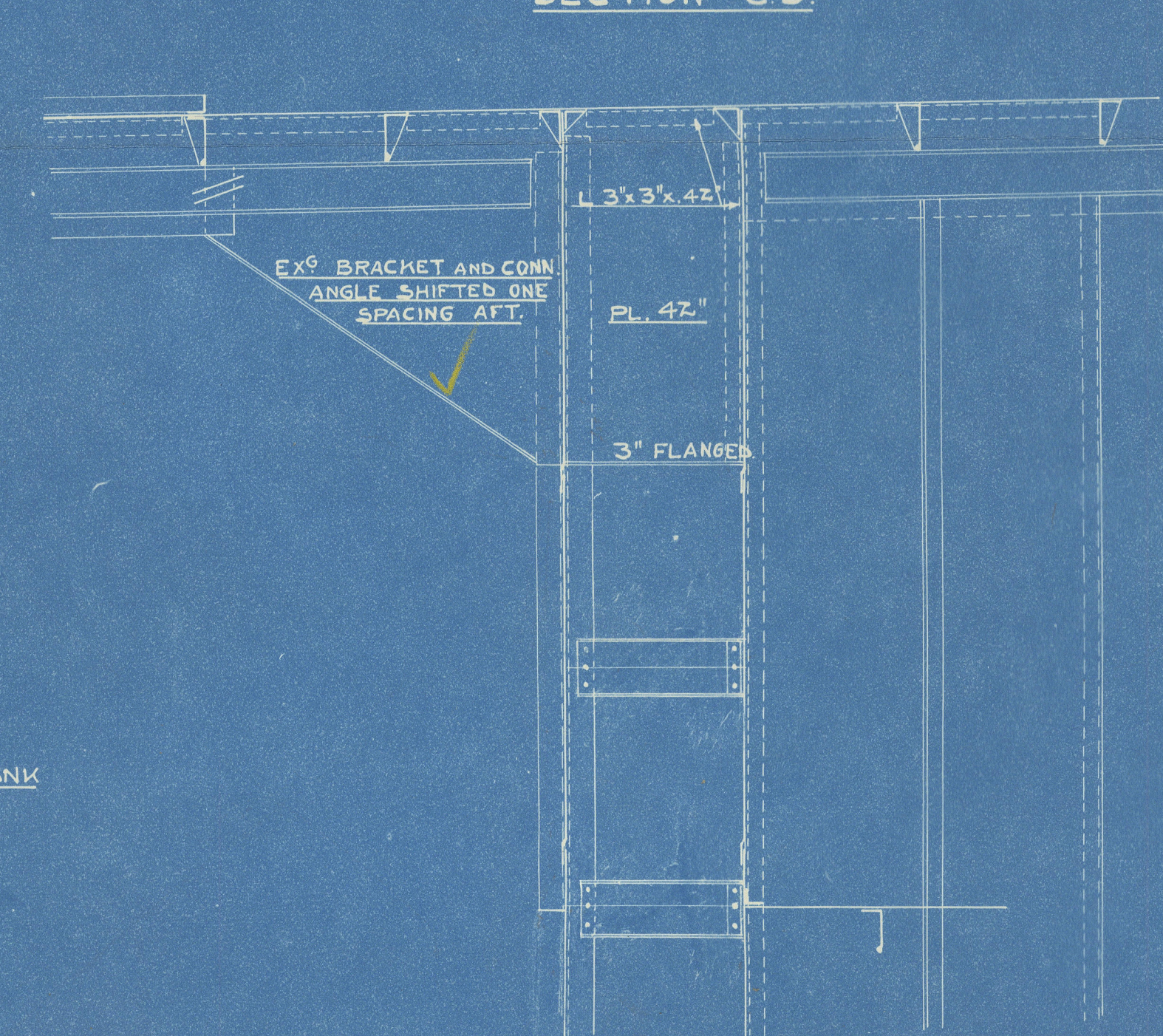
HALF ADDITIONAL BULKHEAD
ON FRAME 70



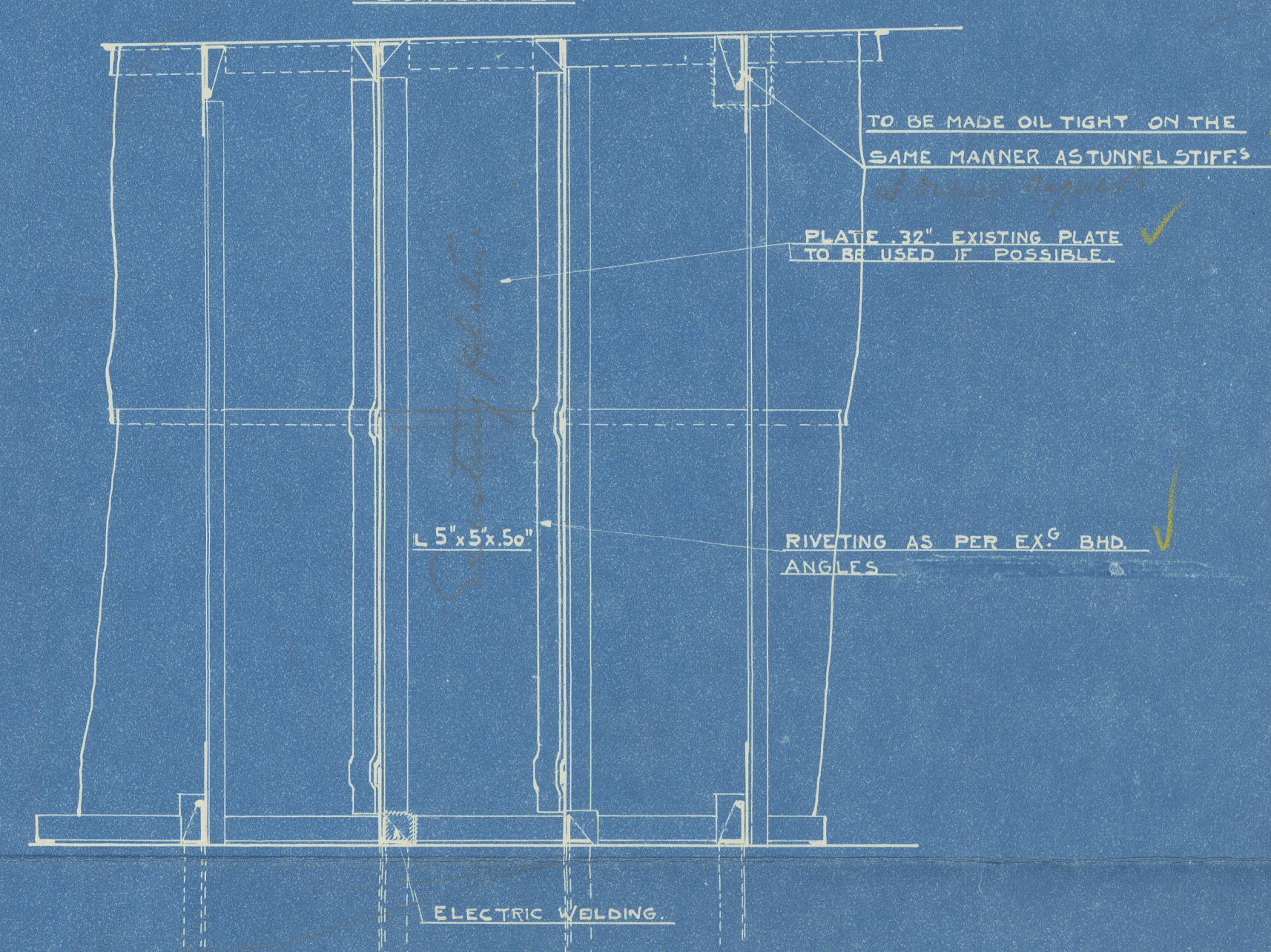
SECTION OF COFFERDAM BULKHEAD.
SECTION A.B.



BRACKET PLATE IN WAY OF DECK STRINGERS.
SECTION C.D.



ELEVATION IN WAY OF MIDDLE LINE BHD.
SECTION E.F.

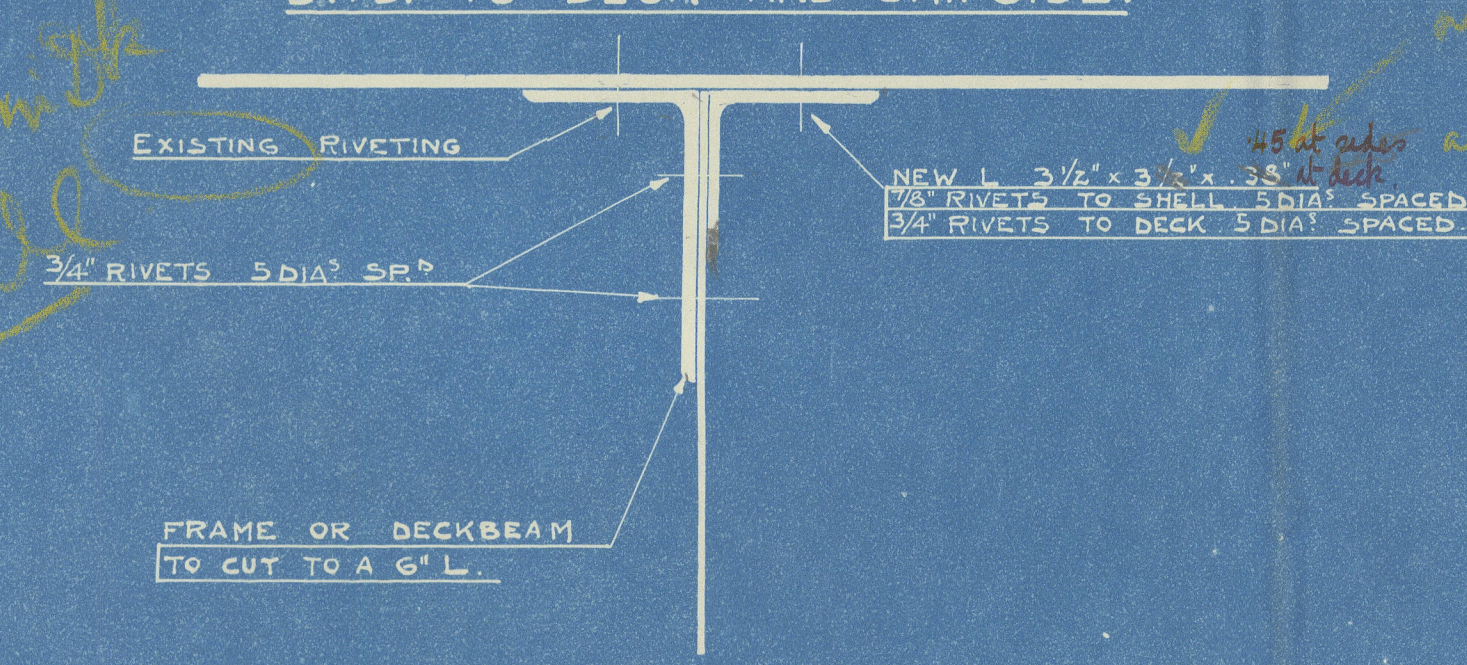


Requirements of Section 20 of the Rules to be complied with.
Dark point of the oil not to be less than 150° F.

NOTE - IN COFFERDAM - OIL FUEL SUCTION 4\"/>

* in oil fuel & bilge lines to enable bilge or oil fuel suction to be used alternatively.
If dry bilges are formed, as per proposal Plan N° 1489, bilge suction to be led to dry bilges & air sounding pipes to be fitted.

ATTACHMENT OF ADDITIONAL
BHD. TO DECK AND SHIPSIDE.



Aut. report No. 18753
s.s. "LEOPOLDVILLE"

ADDITIONAL BULKHEAD TO FORM
COFFERDAM BETWEEN PALM
OIL AND OIL FUEL TANKS.

SCALE 1/25 AND 1/4. Suggestion amendments on this copy.

28/1/33.

CLASS. N° 1491.14A.3.