

HORIZONTAL DONKEY BOILER.

To Lloyds Requirements for a working Pressure of 120 Lbs per sq. ft.

All Plates, Rivets, Stays & Girders of Steel. Tubes of Wrought Iron.

Scale 1" = 1 Foot.

RIVETING

Front & Back Seams double riveted 1/8" Rivet Holes, 3 1/4" Pitch, 4 1/2" Lap.

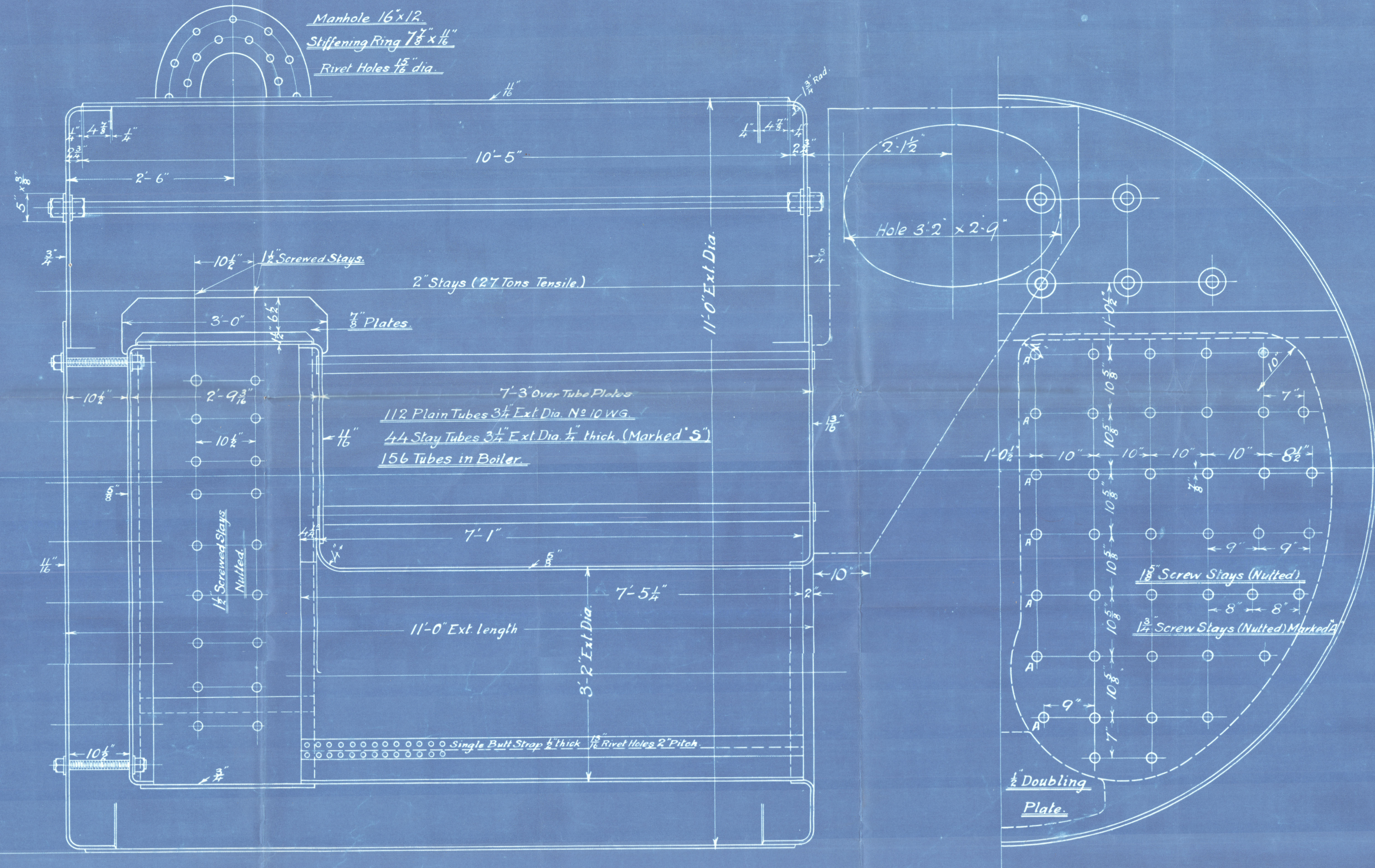
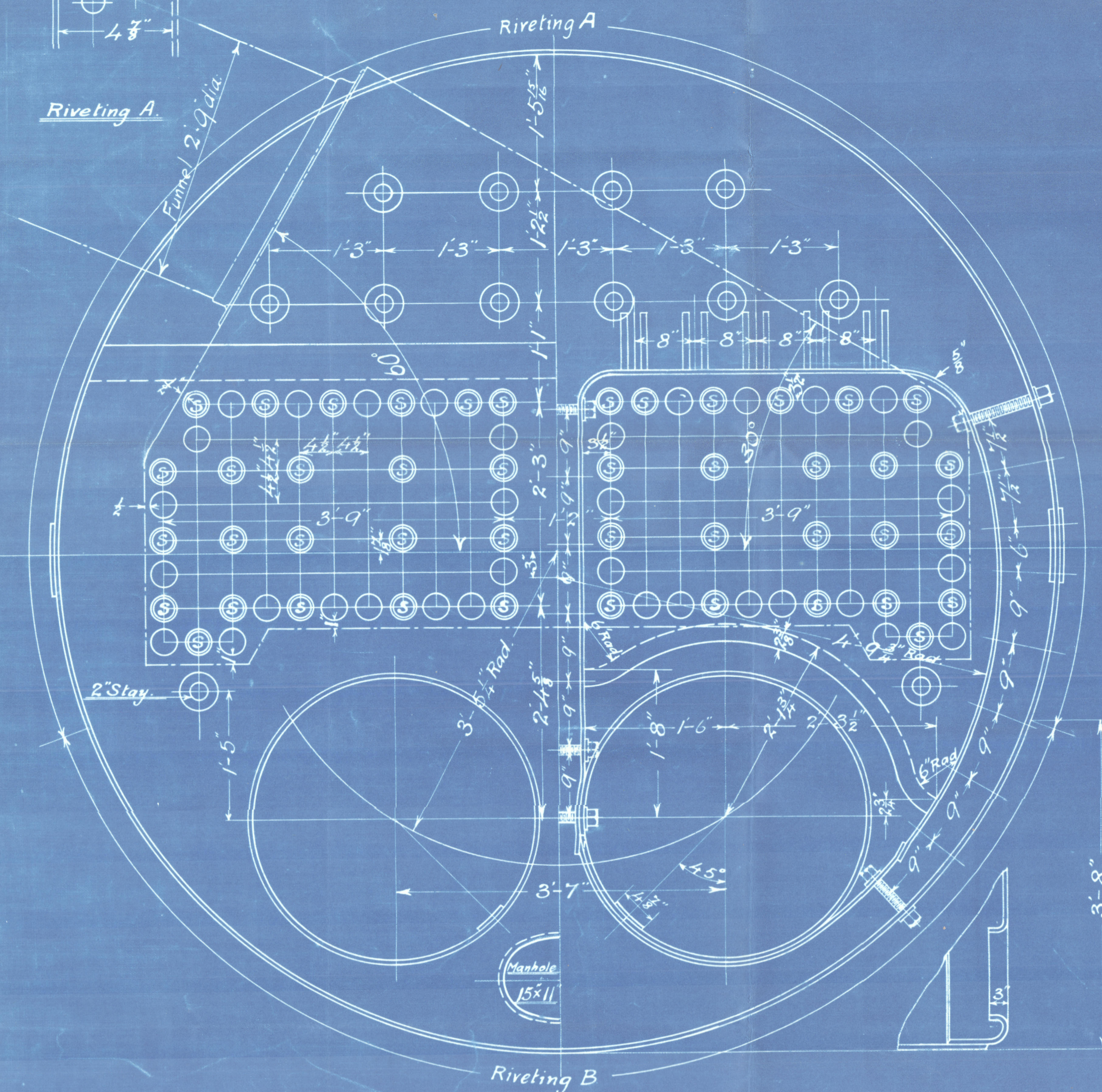
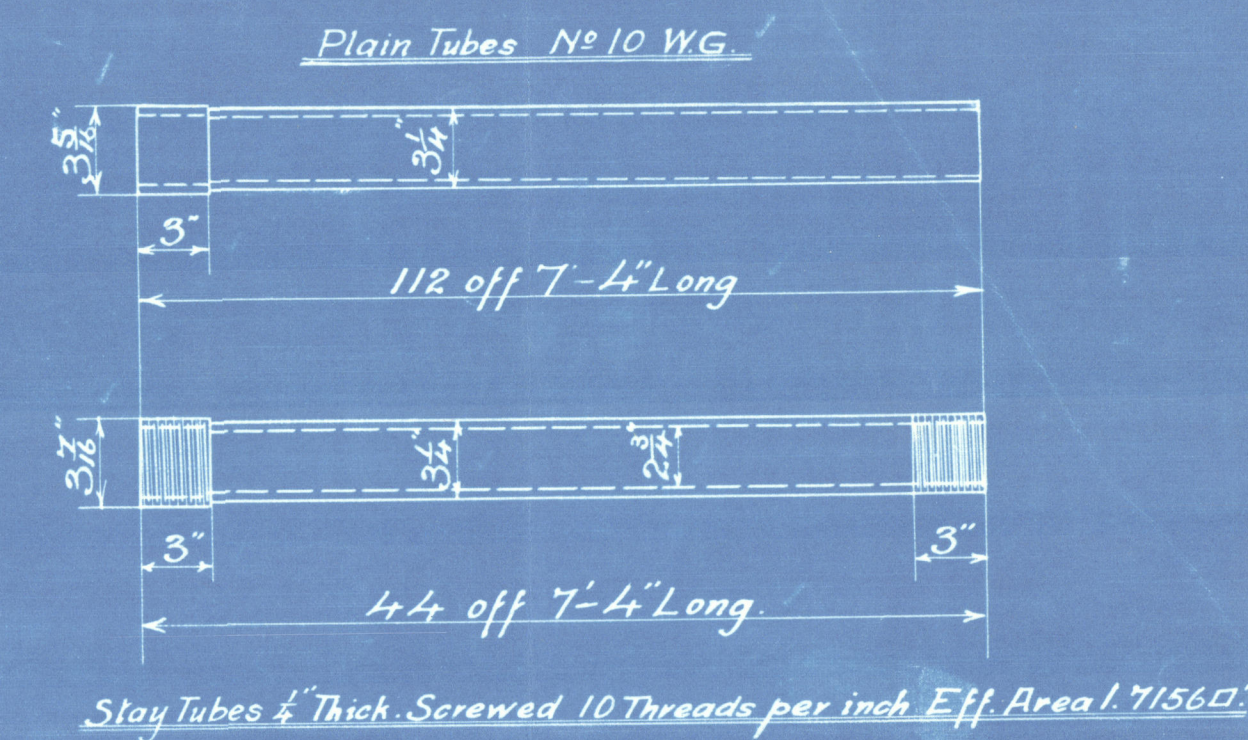
Combustion Chambers (Circumferential & Longitudinal Seams) & Furnaces.

Single Riveted, 3/8" Rivet Holes, 2" Pitch, 2 3/8" Lap.



Heating Surface
 = 1152 sq. ft.

STAYS				
Dia.	Threads per inch	Eff. Dia.	Eff. Area	No. of Stays
1 1/8"	9	1.36	1.45	70
1 3/8"	9	1.48	1.73	66
2"	6	1.78	2.5	12
1 1/2"	9	1.60	2.03	14



DATE	
1914	Eng 788 Intended for Messrs. Bartram & Sons 235 April 27 th 1914
1914	Eng 788 Intended for Messrs. Bartram & Sons 236 April 27 th 1914
1911	Eng 788 Intended for Messrs. Bartram & Sons 237 Nov 1 st 1911
1914	Eng 788 Intended for Messrs. Bartram & Sons 238 Nov 24 th 1914

Ans. 27.11.14
APR

SUNDERLAND.

J. Dickinson & Sons Ltd. 794

Duty Blr No 1054

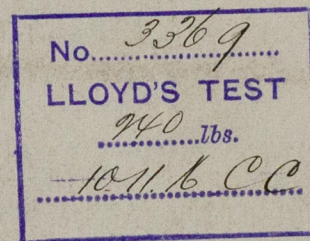
FOR

Bartam & Sons Ltd

S.S. No. 238

W.P. 120 lbs. □

mark on Boiler:—



S.S. 'Dockleaf'

SUNDERLAND RPT. NO. 269551



NOW

LITIOPA

© 2020

Lloyd's Register
Foundation

W250-0173