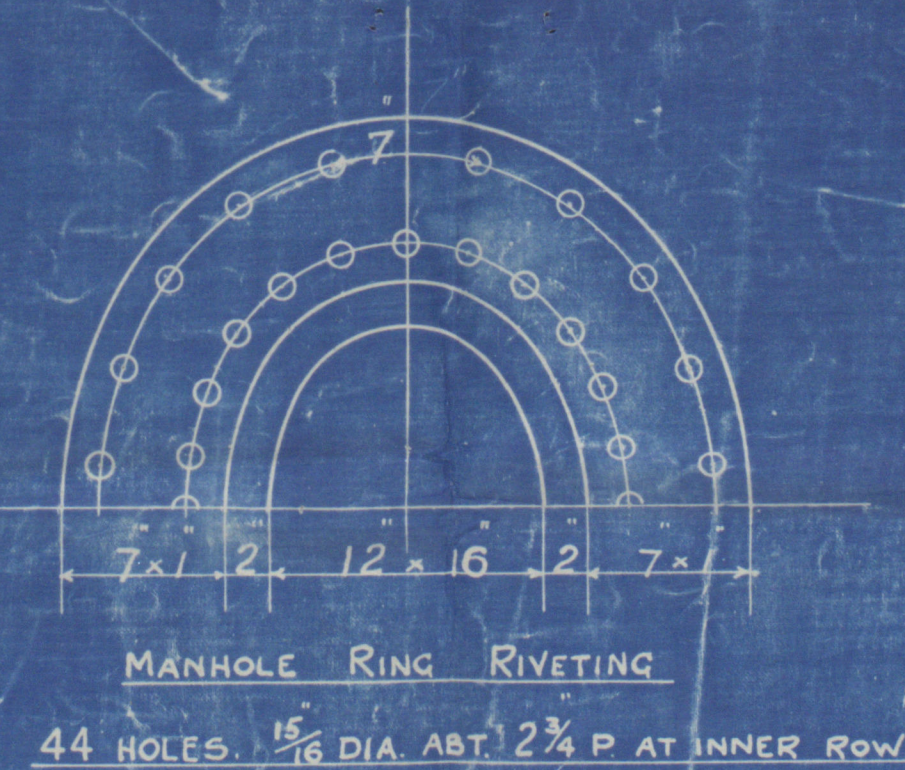


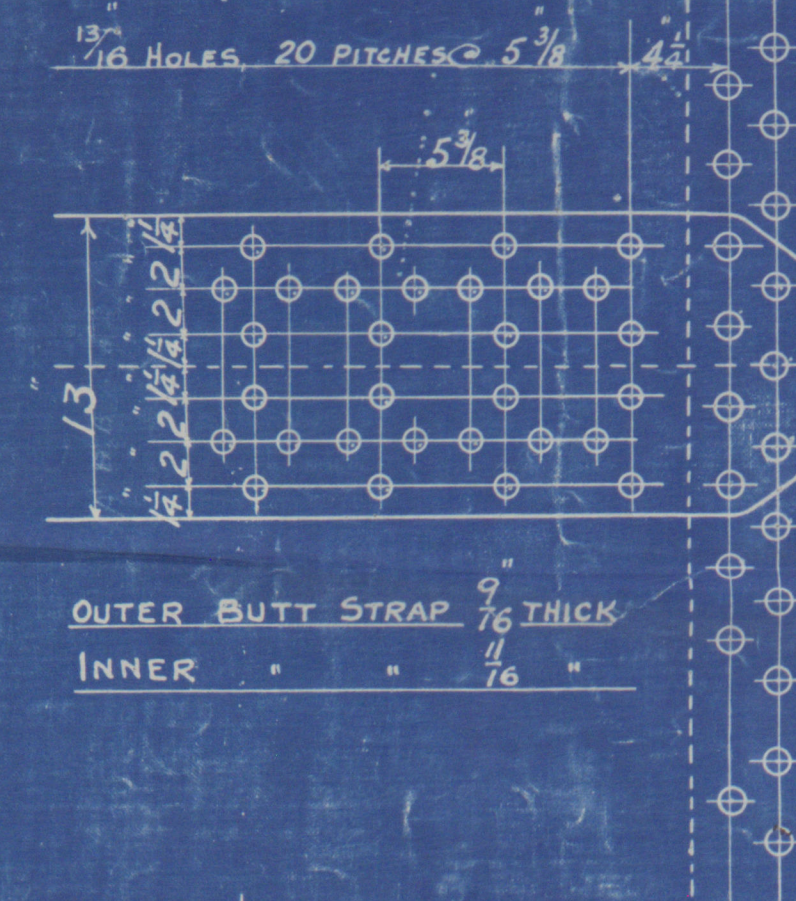
SPECIFICATION OF MATERIALS

SHELL & STRAPS	29 TO 33 TONS
GIRDERS & MAIN STAYS	28 " 32 "
BALANCE OF PLATES, RIVETS & SCREW STAYS	26 " 30 "

LIFTING LUGS STUDDED ON. FOR DETAILS
SEE MOUNTINGS DRG. M.508.



SHELL RIVETING
PLATE % = 84.88
RIVET % = 83.38



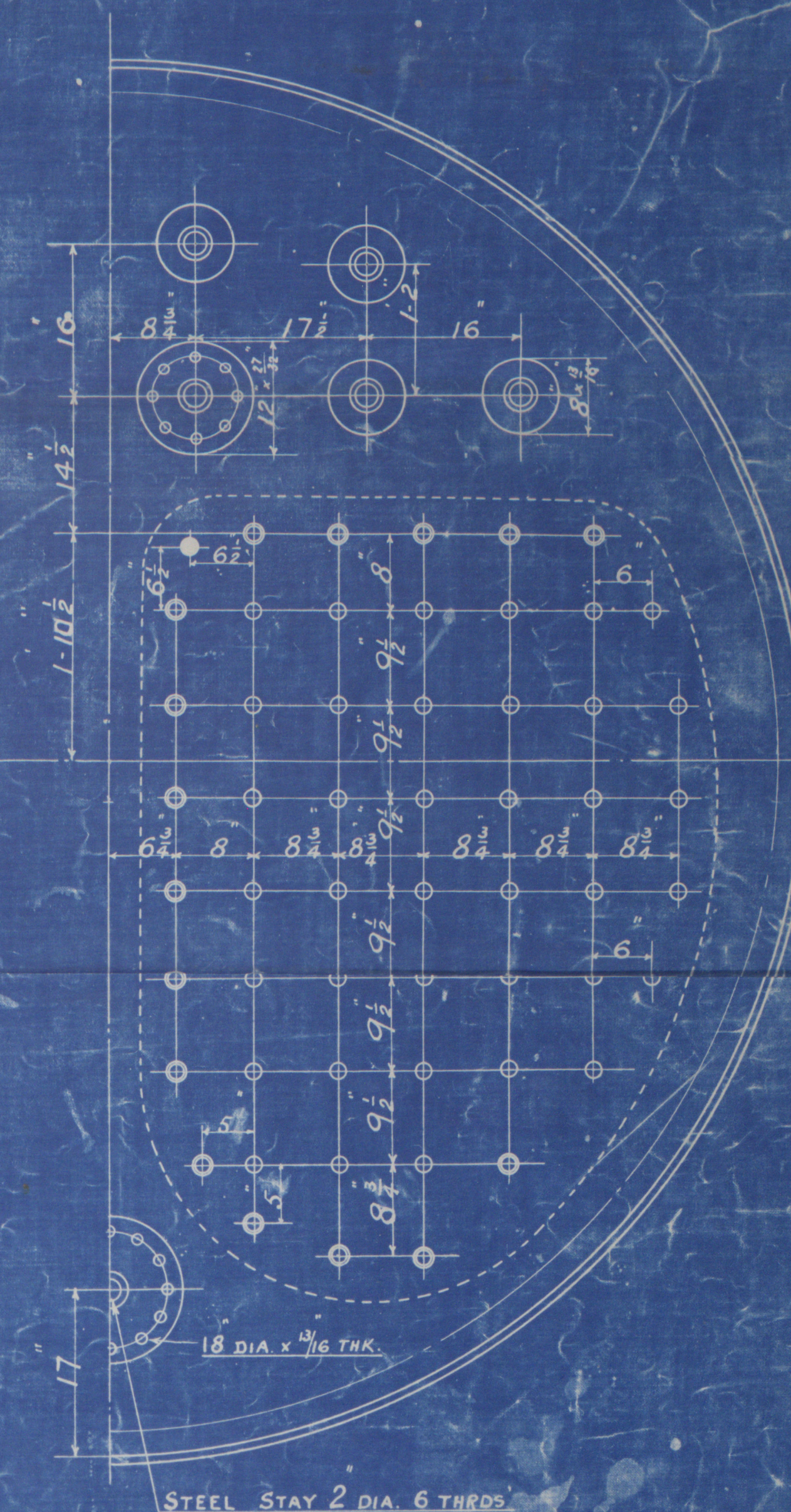
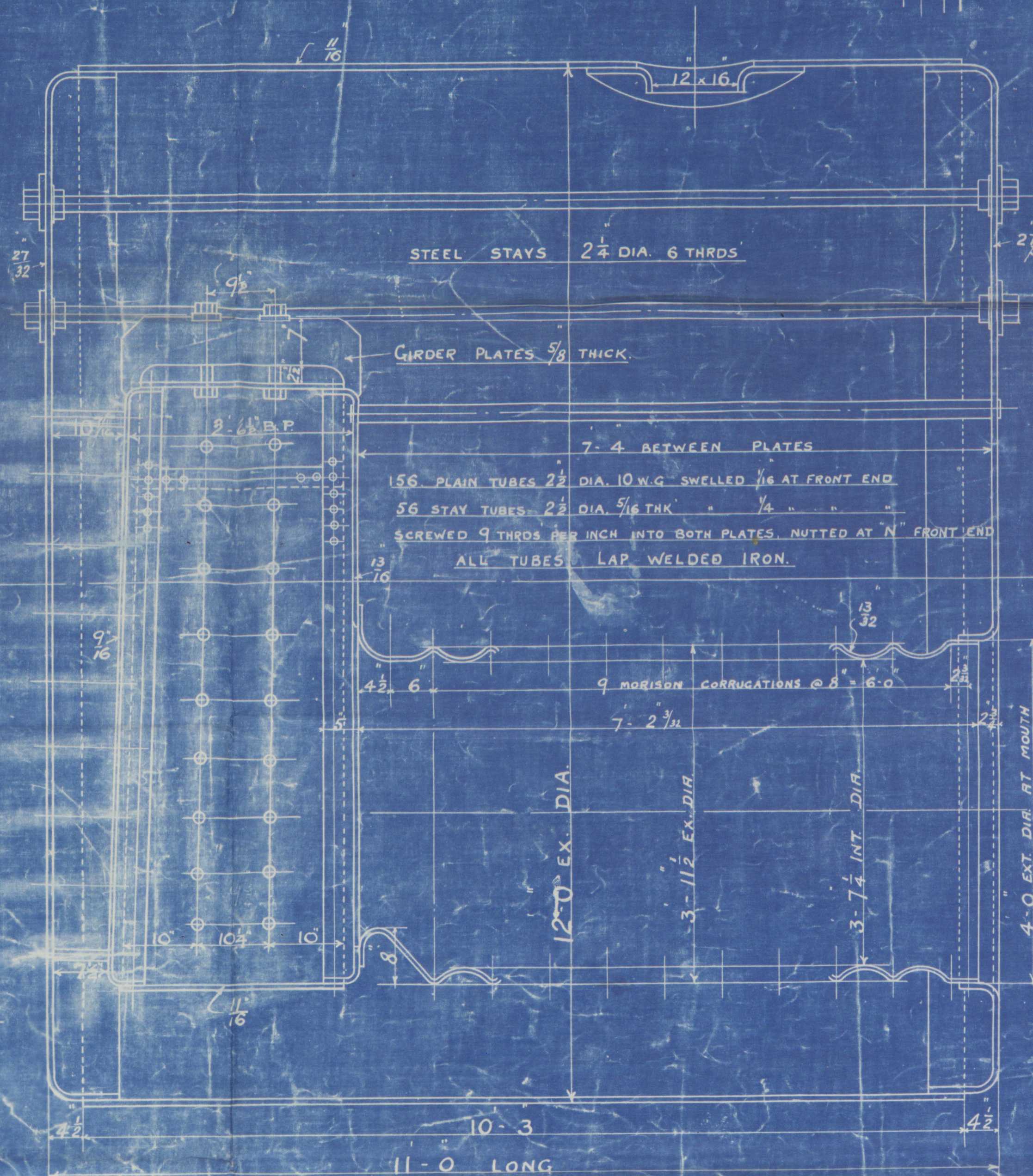
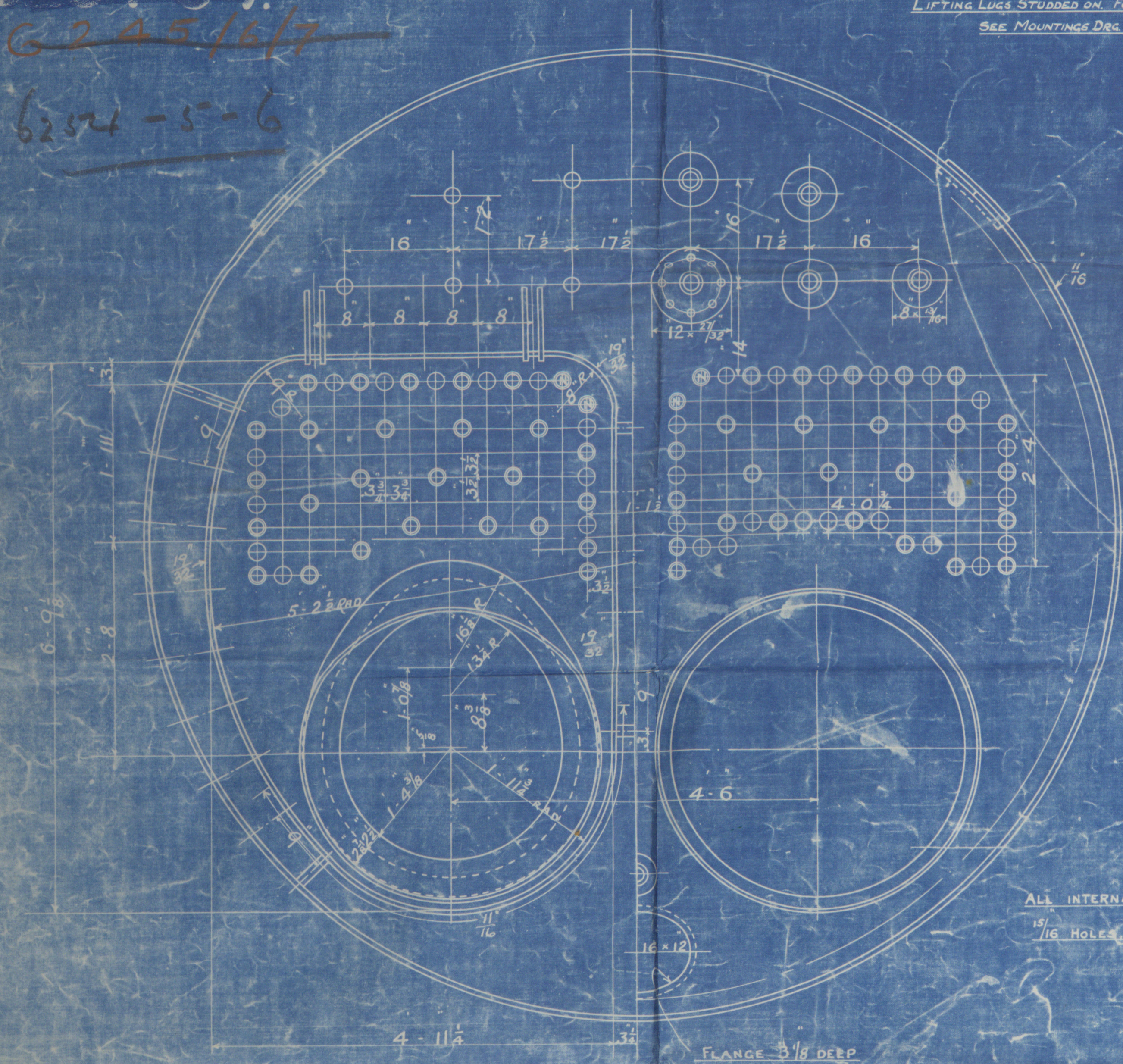
CIRCUM. SEAMS 1/16 H. 3 3/8 P. DOUBLE RIVETING
CONTINUOUS BELOW & OF FURNACE

PLATE % = 88.51

RIVET % = 45.45

COMBUSTION CHAMBER SCREW STAYS
SCREWED 9 THRS. R.I. NUTTED AT ENDS

AT BACK MARK	1 1/2" DIA.
" " " "	1 1/8" "
" " " "	1 1/4" "
" SIDES	1 1/2" "
IN GIRDERS	1 3/8" "



HEATING SURFACE - 1390 SQ. FT.
INCLUDING ALL FURNACES & C.C. PLATES AS FOR OIL FIRED

STEEL BOILER 12-0 DIA. 11-0 LONG. 120 LBS. W.P. LLOYDS

AMENDMENTS

NO.	DESCRIPTION	DATE	DRAWN BY
1	ALTERATION TO C.C. PLATES	5/10/36	W.P. LLOYDS

CHECKED BY: [Signature]
PASSED BY: [Signature]

STOCKTON CHEM. ENGRS.

✓ RILEY BLRS LTD.

Nos 6254 - 5

for

W^m DOXFORD & SONS SHIP No 639

do.

BURNTISLAND S.B. Co.

ENG No 202

SHIP No 213

~~W^m DOXFORD & SONS SHIP No 640~~

12' 0 x 11' 0 x 120 lbs.

DUP. OF S.C.E. & R.B. Nos 6212-3.

Mal. Rpt Nos. 16134 }
16226 }

W25-0074

(M^s. Forest. (Doxford 639)
Mal. rpt. No. 16134

(S.C.E. 3222)

(M^s. Darymore (Burntisland S.B. Co. 213)
Mal. rpt. 16226
(S.C.E. 19520)



© 2019

Lloyd's Register
Foundation