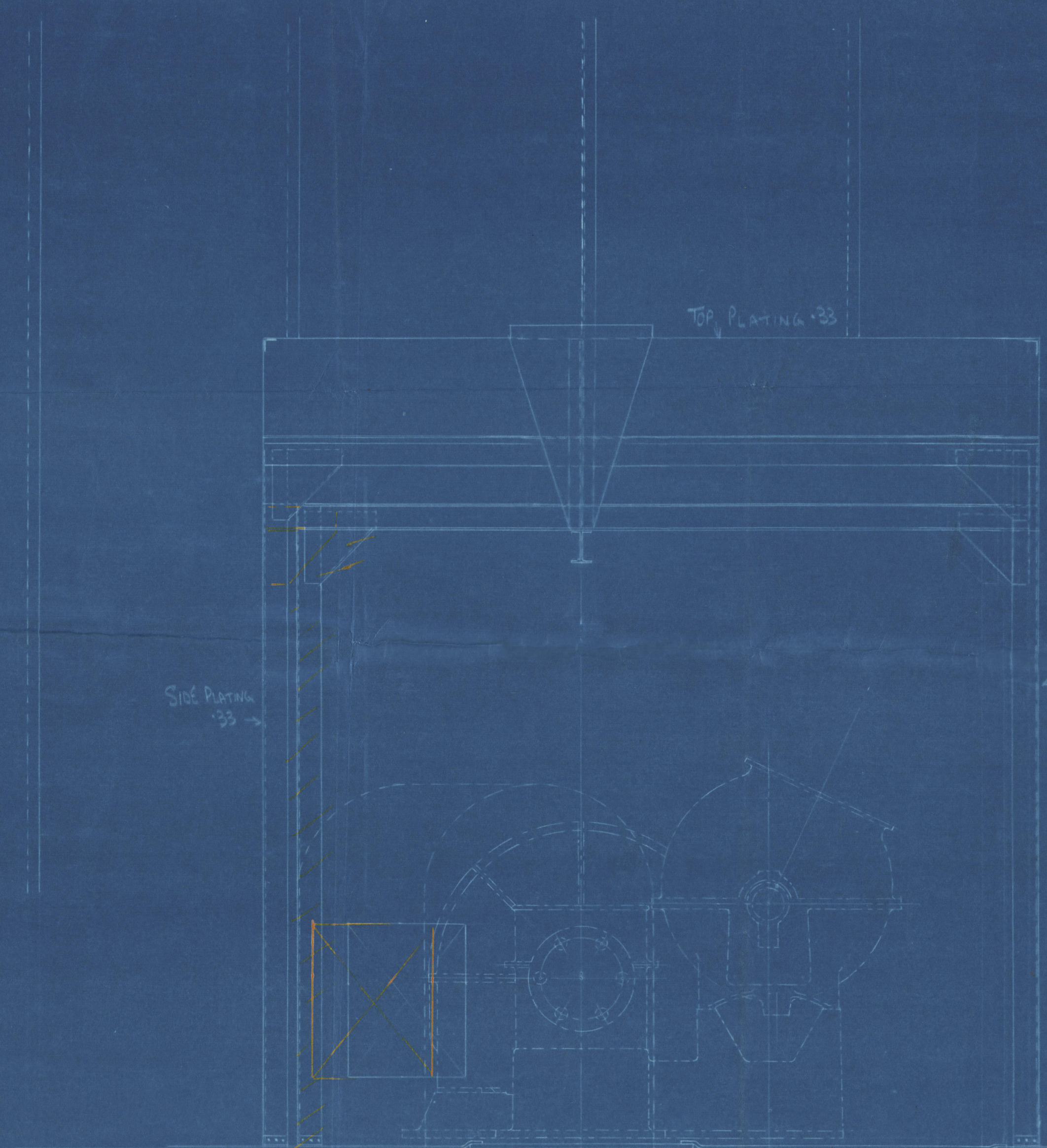
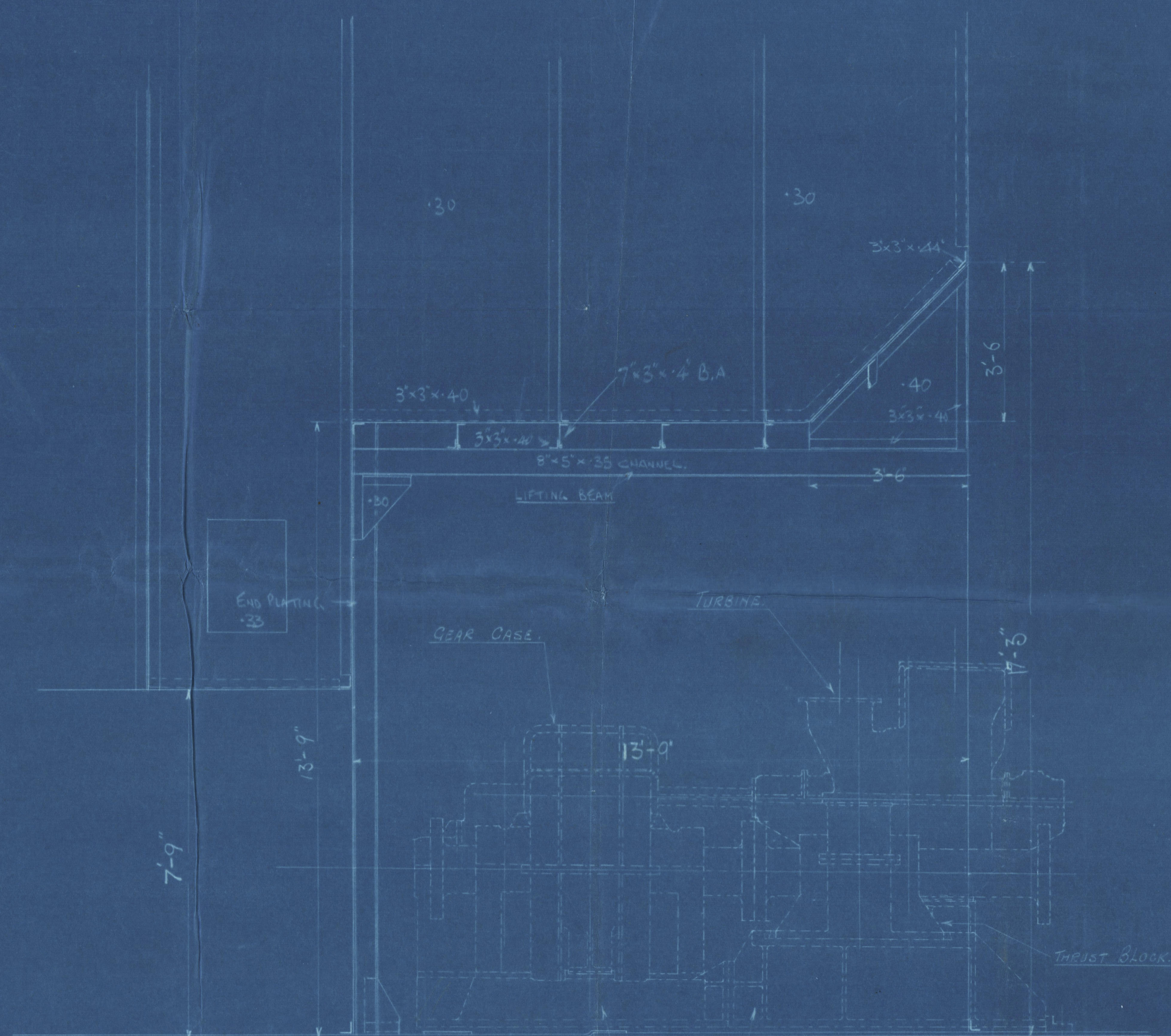


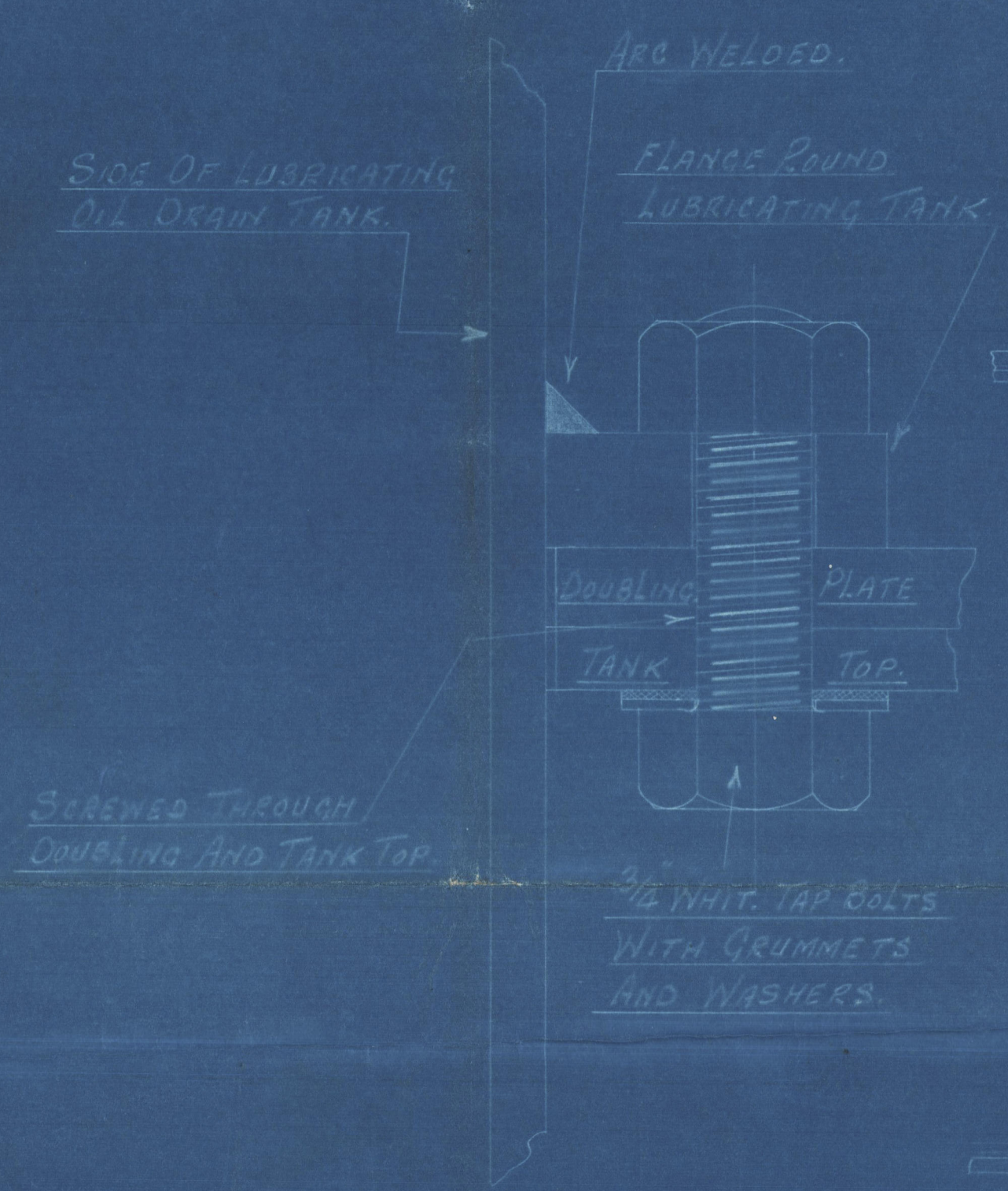
1730



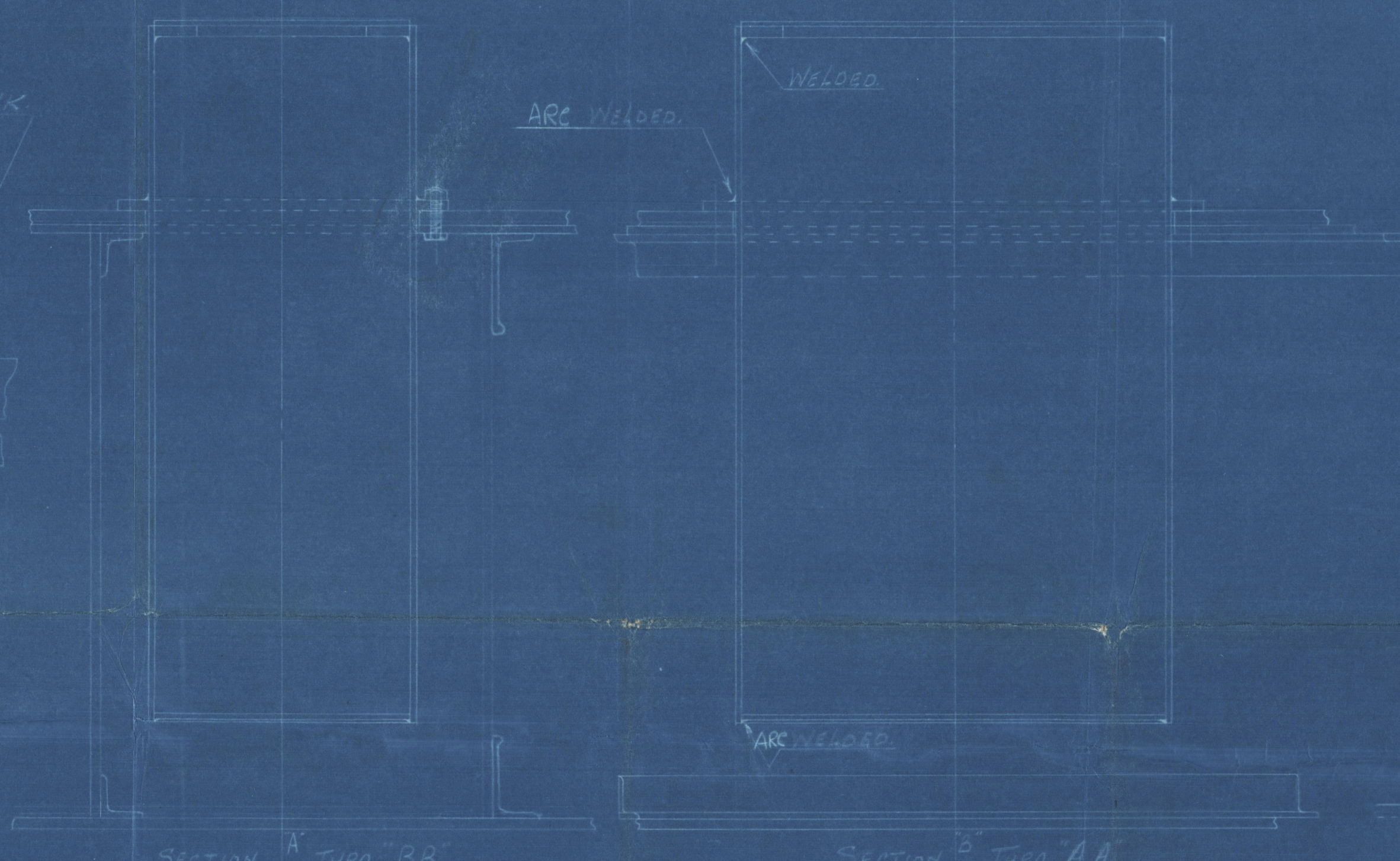
SECTION AA, FRAME 74 LOOKING AFT.



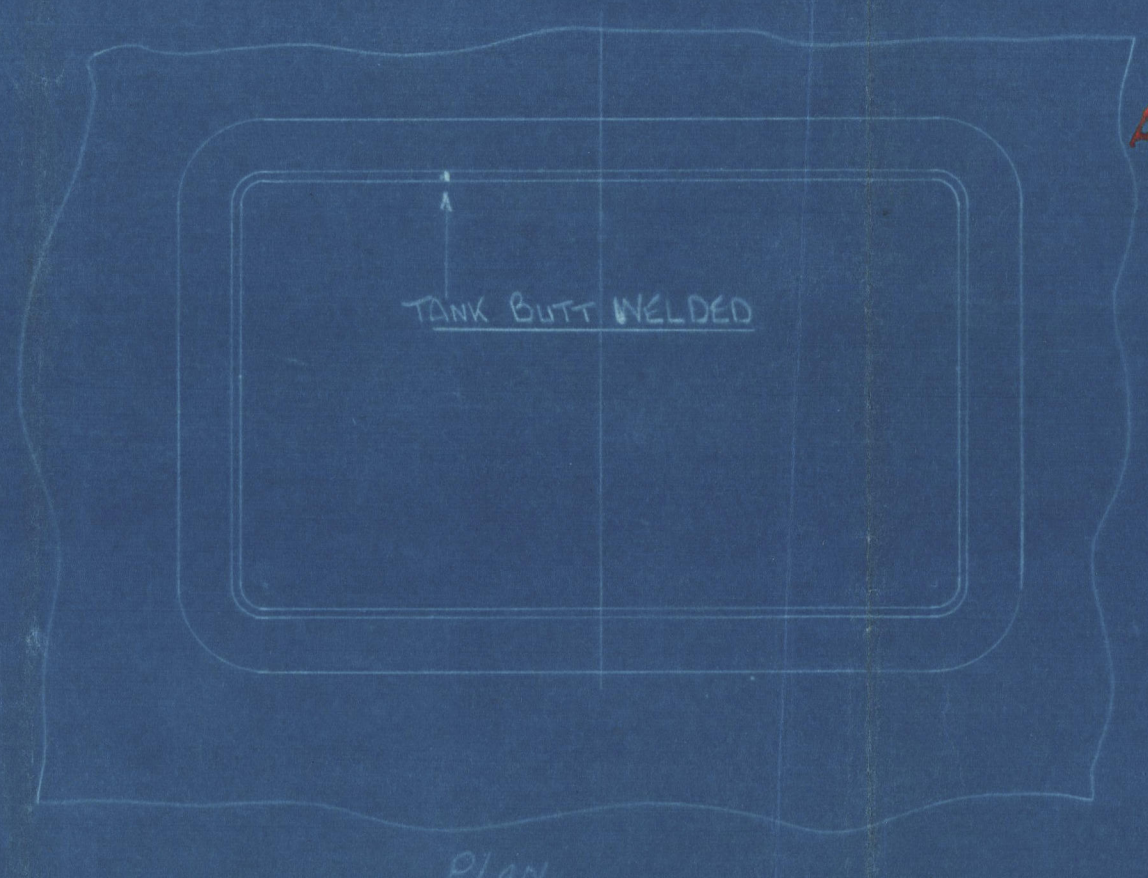
ELEVATION.



SECTION SHewing METHOD OF BOLTING LUBRICATING OIL DRAIN TANKS IN PLACE.
Scale: FULL SIZE.

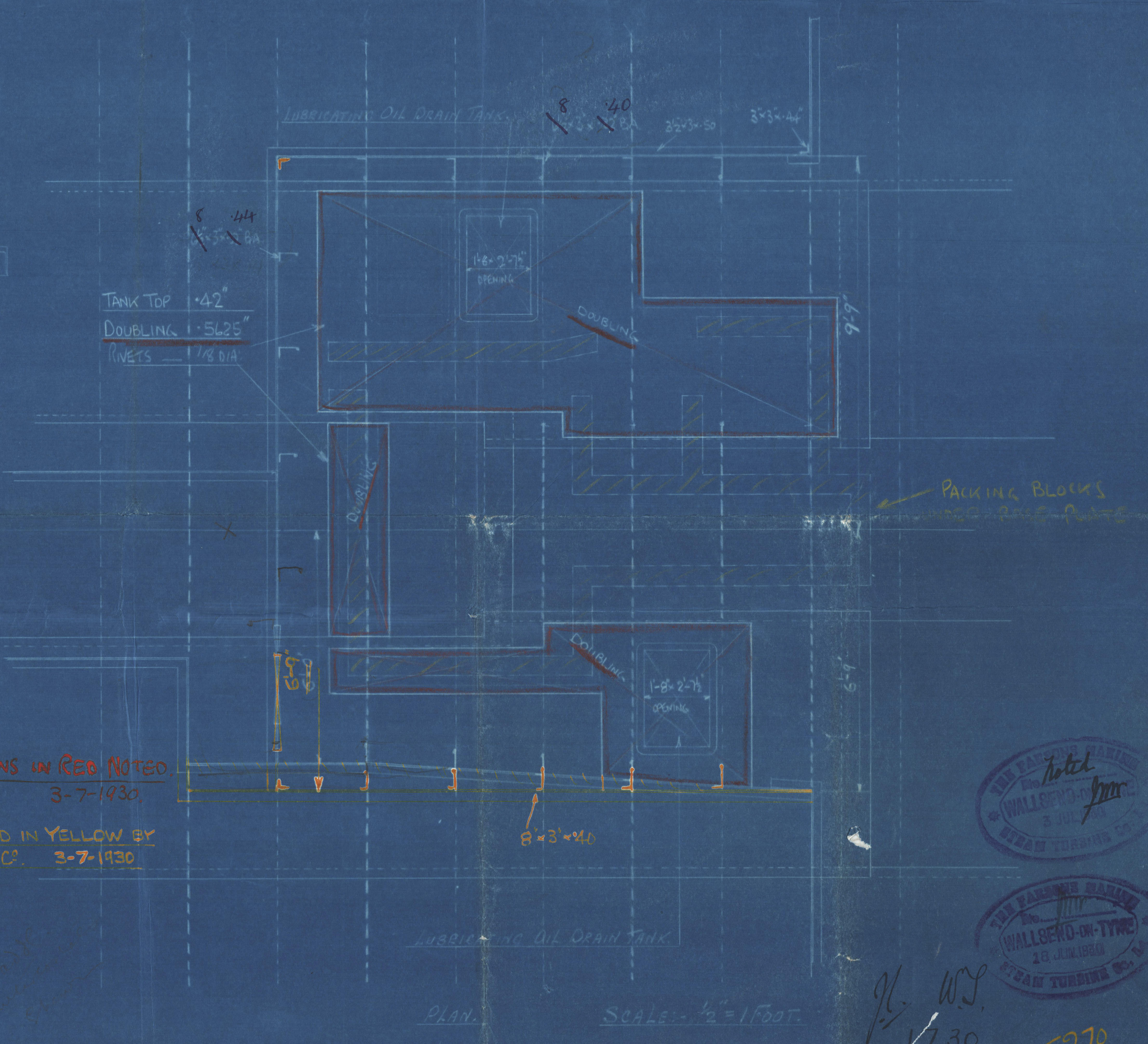


DETAIL OF LUBRICATING OIL DRAIN TANK.
Scale: 1/2" = 1 FOOT.



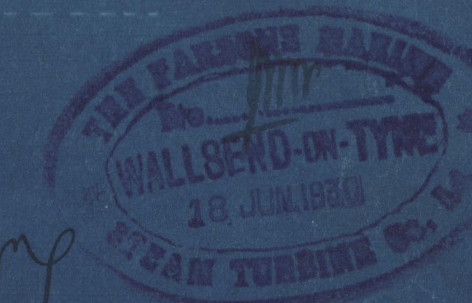
PLAN.

ALTERATIONS IN RED NOTED
3-7-1930.
MODIFIED IN YELLOW BY
P.N.S.T.C. 3-7-1930.



PLAN. Scale: 1/2" = 1 FOOT.

SKETCH SHewing MODIFICATION TO THRUST RECESS
ENGINE No 270.



W.S.
1730



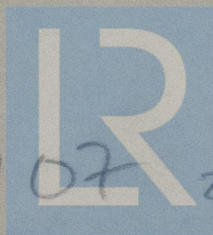
E270
30

1249-0107 1/2

S. S. "Kingswood"

Nwc 87074

W249-0107 2/2



© 2020

Lloyd's Register
Foundation

From THE PARSONS MARINE STEAM
TURBINE Co. Ltd.

For Enclosure

To

LLOYDS.

Title & T.S.A. No.

Lloyd's Register
Foundation

4/7/30

W249-0107 2/2