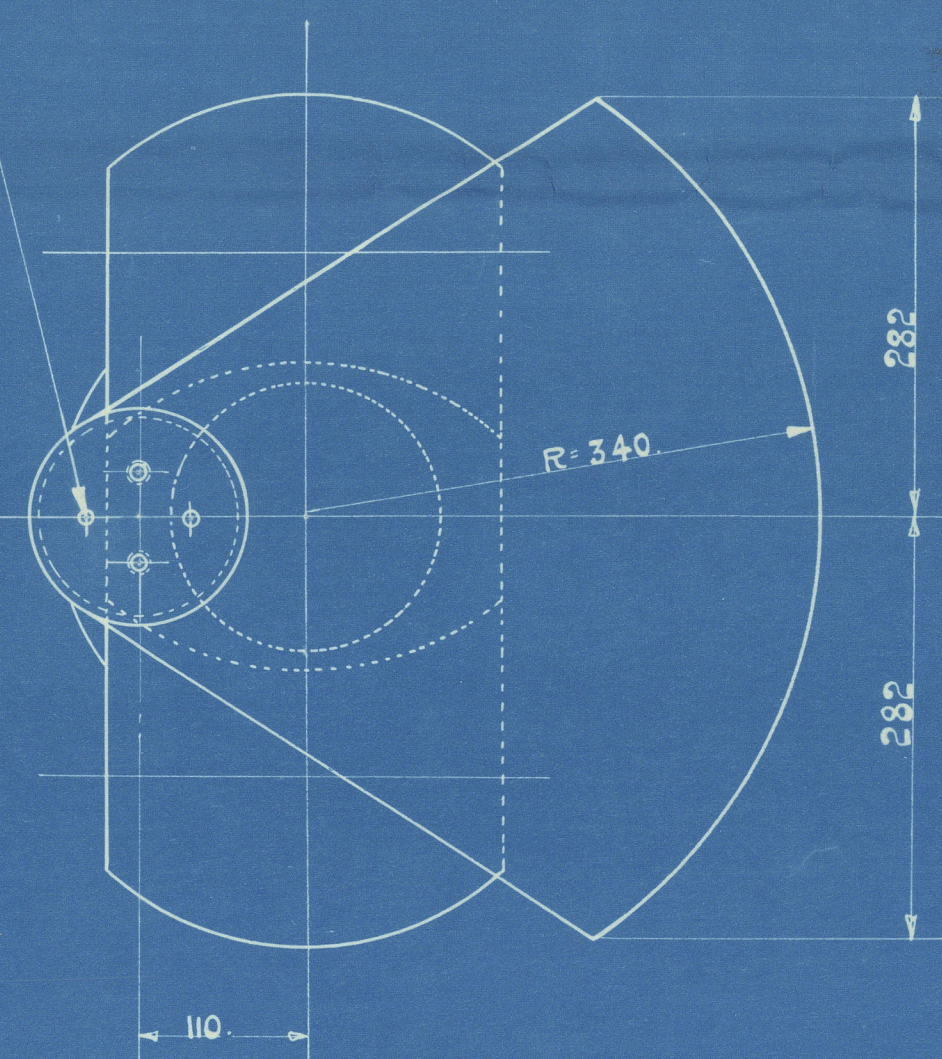
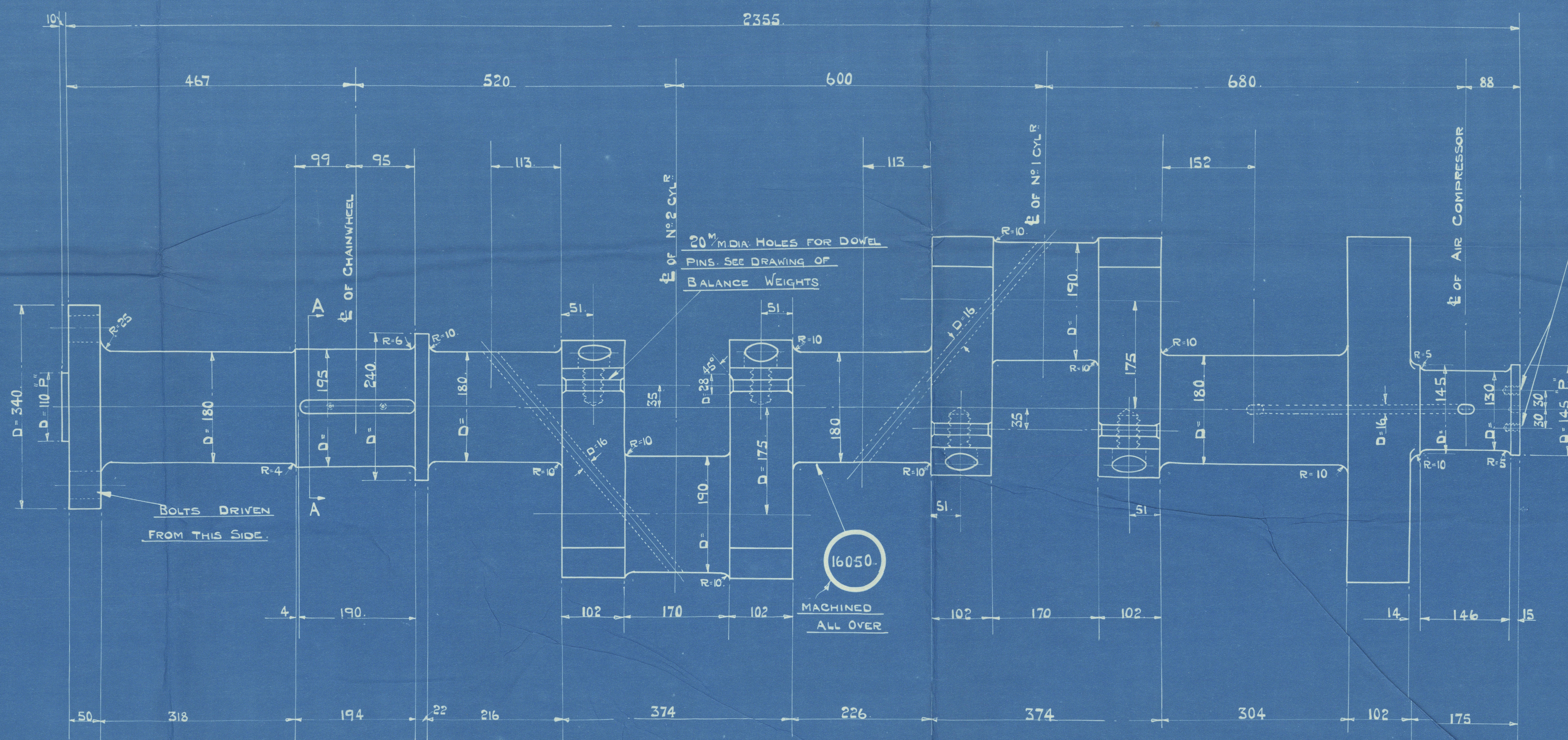


2 HOLES 12 DIA. 15 DEEP  
FOR DOWEL PINS.  
DRILLED WITH LUBRIC OIL  
PUMP CRANK IN POSITION.



VIEW LOOKING ON  
AIR COMPRESSOR END



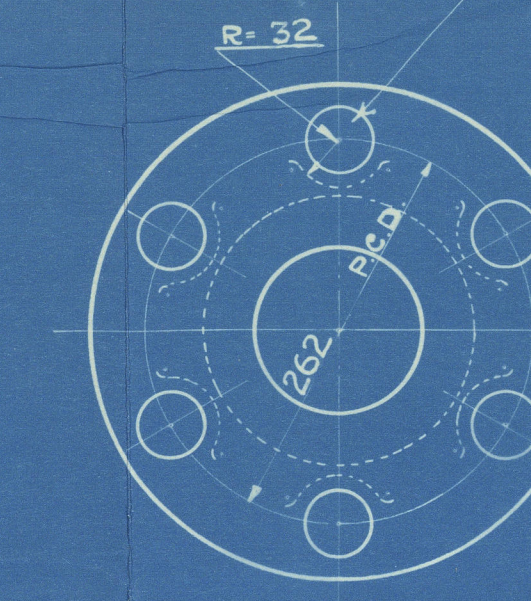
2 HOLES TAPPED 3/8" WHIT.  
24 DEEP FOR SCREWS

H. 19

14753

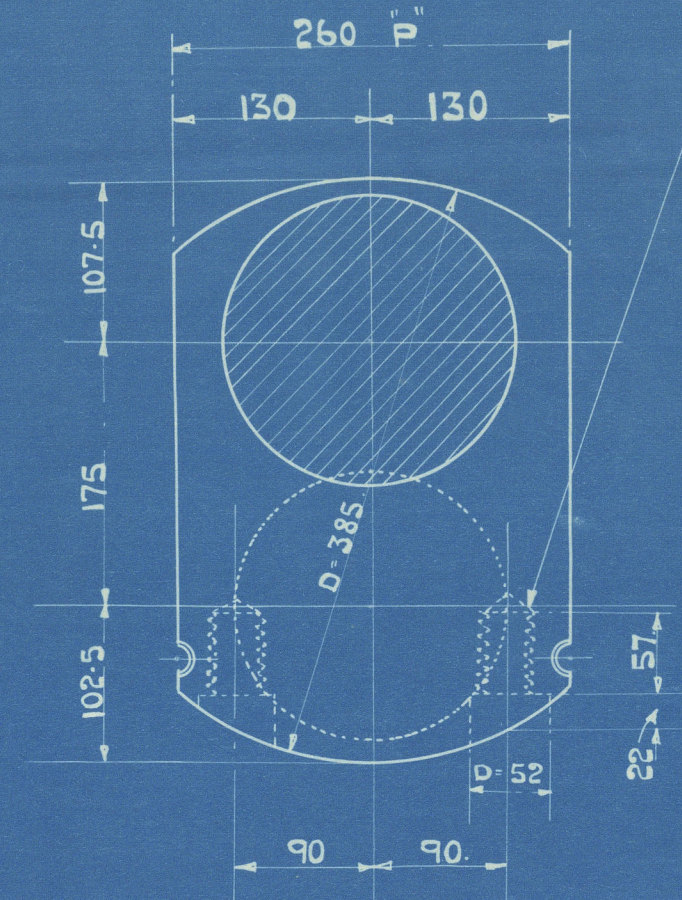
6 HOLES ROUGH BORED  
FOR REAMERING  
TO SUIT TAPER ON BOLT  
SEE DETAIL

16051

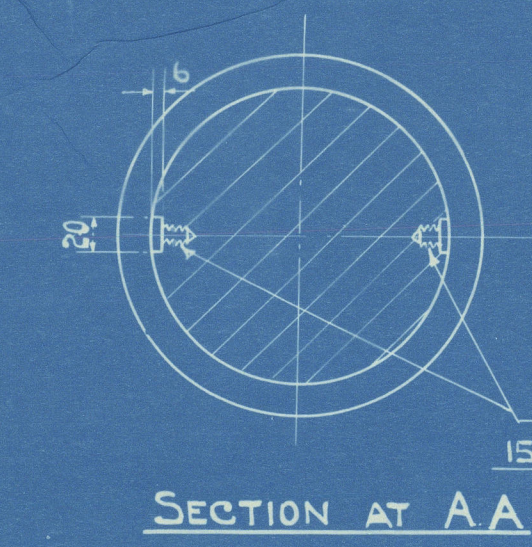
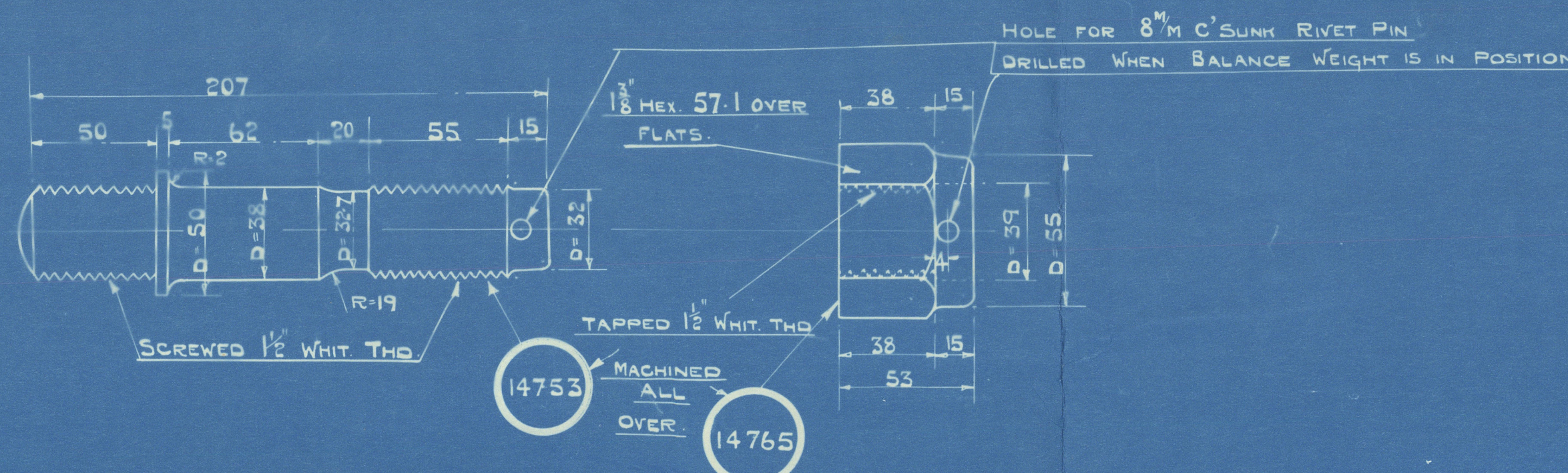


COUPLING

TAPPED 1/2 WHIT. FOR STUDS.



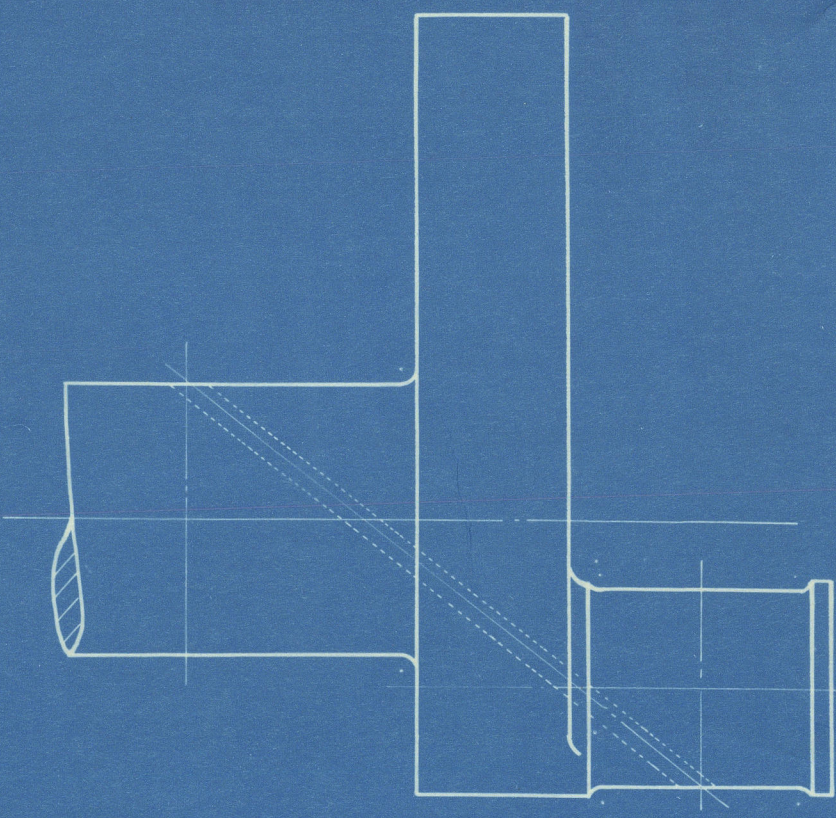
SECTION THRO' CRANK PIN.



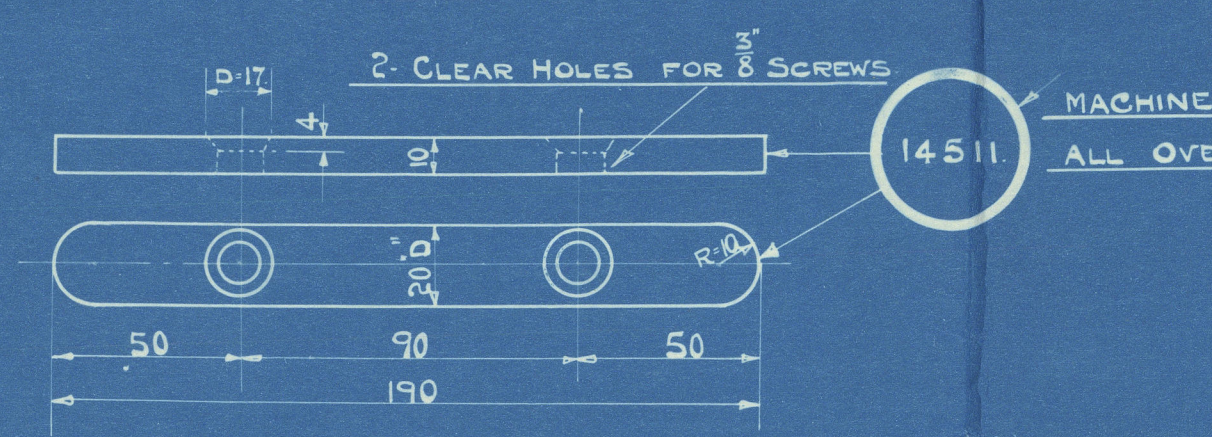
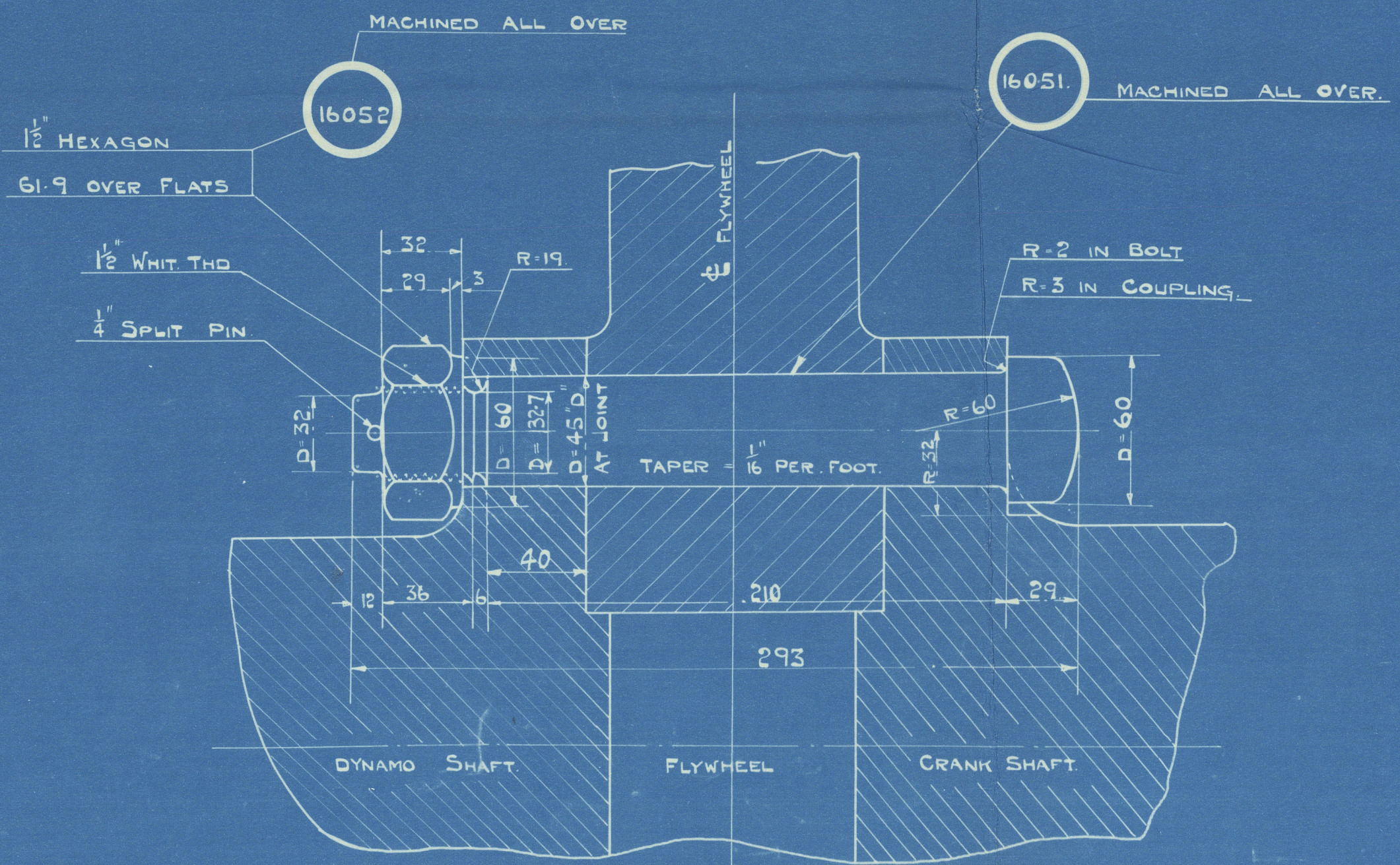
SECTION AT AA

4 HOLES TAPPED 3/8" WHIT. THD.  
15 M. DEEP FOR C'SUNK SCREWS

C.S. 16



MATERIAL  
SIEMENS MARTIN STEEL 28.32 TONS  
TO REQUIREMENTS, TESTS & SURVEY  
TEST PIECES TO BE TAKEN  
NEWELL STANDARD LIMITS TO BE USED.



NO. OF PIECES ENGINE	DESCRIPTION	PATT. NO.	MATERIAL	WEIGHT IN LBS.	REMARKS	SHOP	SKETCH NO. OF JIG
1	CRANKSHAFT	16050	S.M. STEEL	833			
8	STUD FOR BALANCE WEIGHT	14753	STEEL BAR	28.32 TONS	STEEL		
8	1 1/8" NUT	14765	WROT IRON				
2	FEATHER FOR CHAINWHEEL	14511	KEY STEEL				
6	COUPLING BOLT	16051	STEEL BAR	28.32 TONS	STEEL		
6	1 1/2" NUT	16052	WROT IRON				
6	1/4" SPLIT PIN FOR COUPLING BOLT		STEEL				
4	SCREWS FOR CHAINWHEEL KEY	C.S. 16	STEEL BAR	STD DRG 28163			

S. A. 2<sup>325</sup>  
350.  
CRANKSHAFT.

SCALES - 1:5, 1:2



24  
11/12/26.

W248-0019



Harland Wolff  
757 etc.

Crankshaft.

~~GEN BOX NO 1010~~

\* King Edgar Bel. 9872

King Edwin

King Egbert



© 2019

W248-0019  
Loyds Register  
Foundation