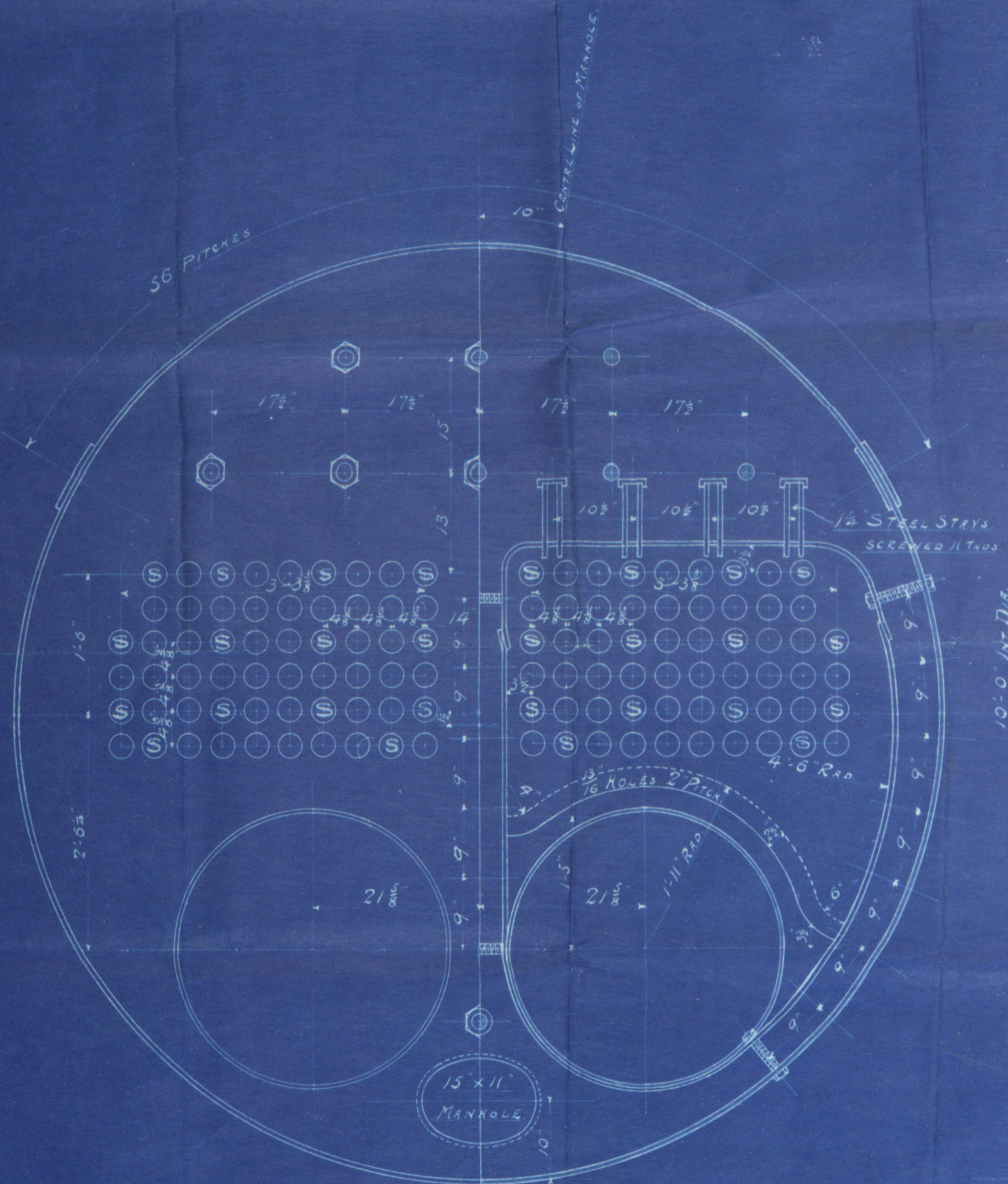
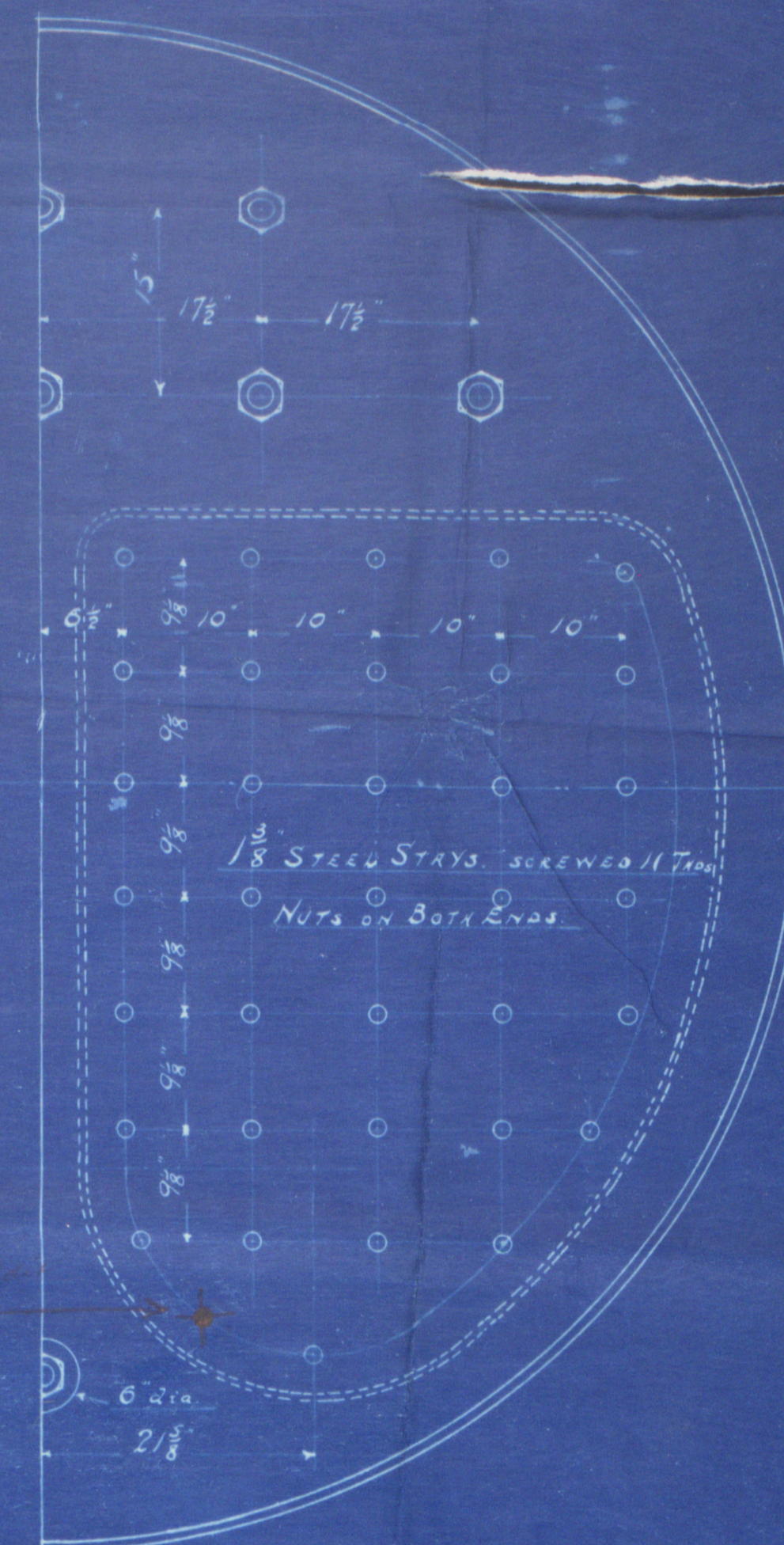
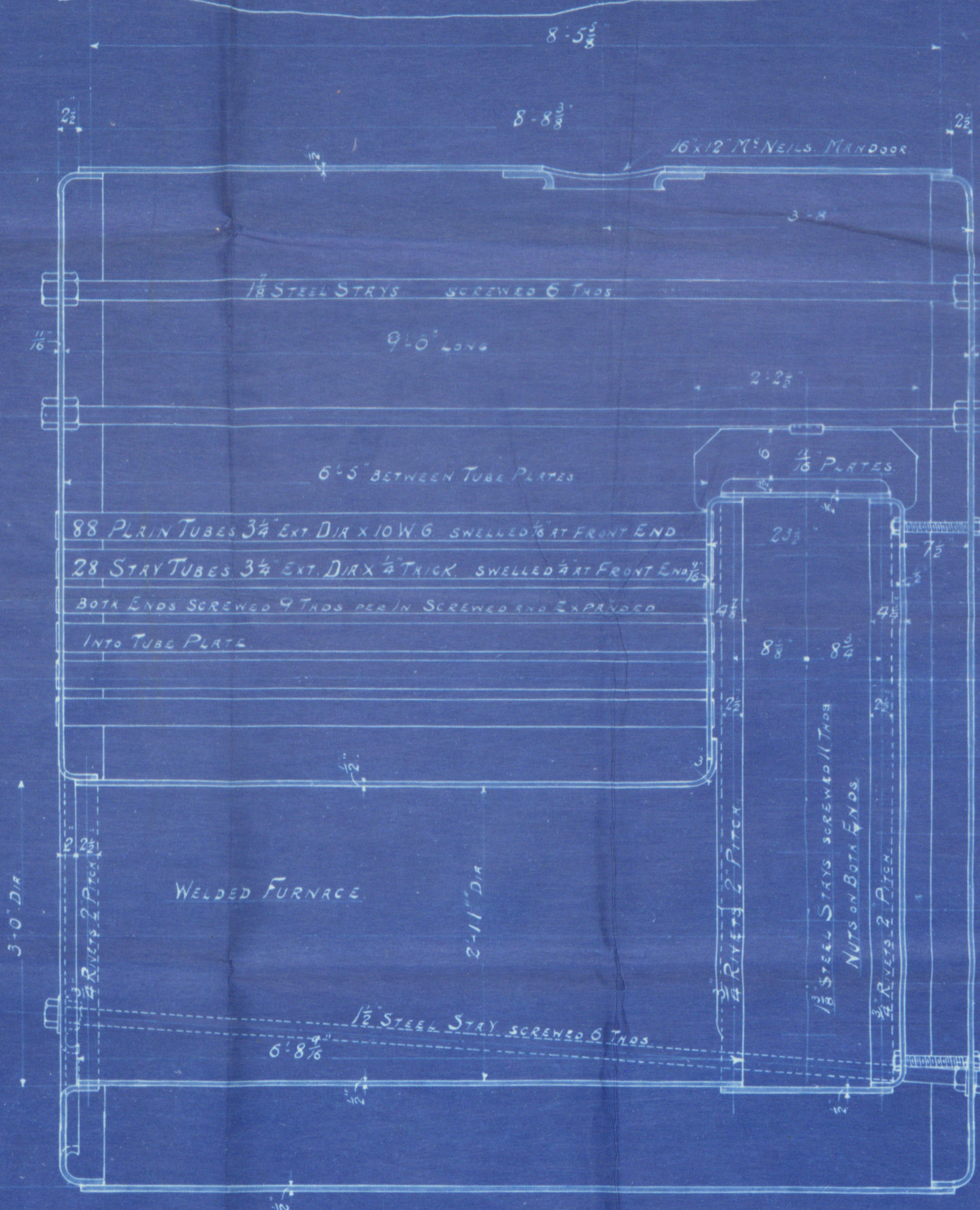
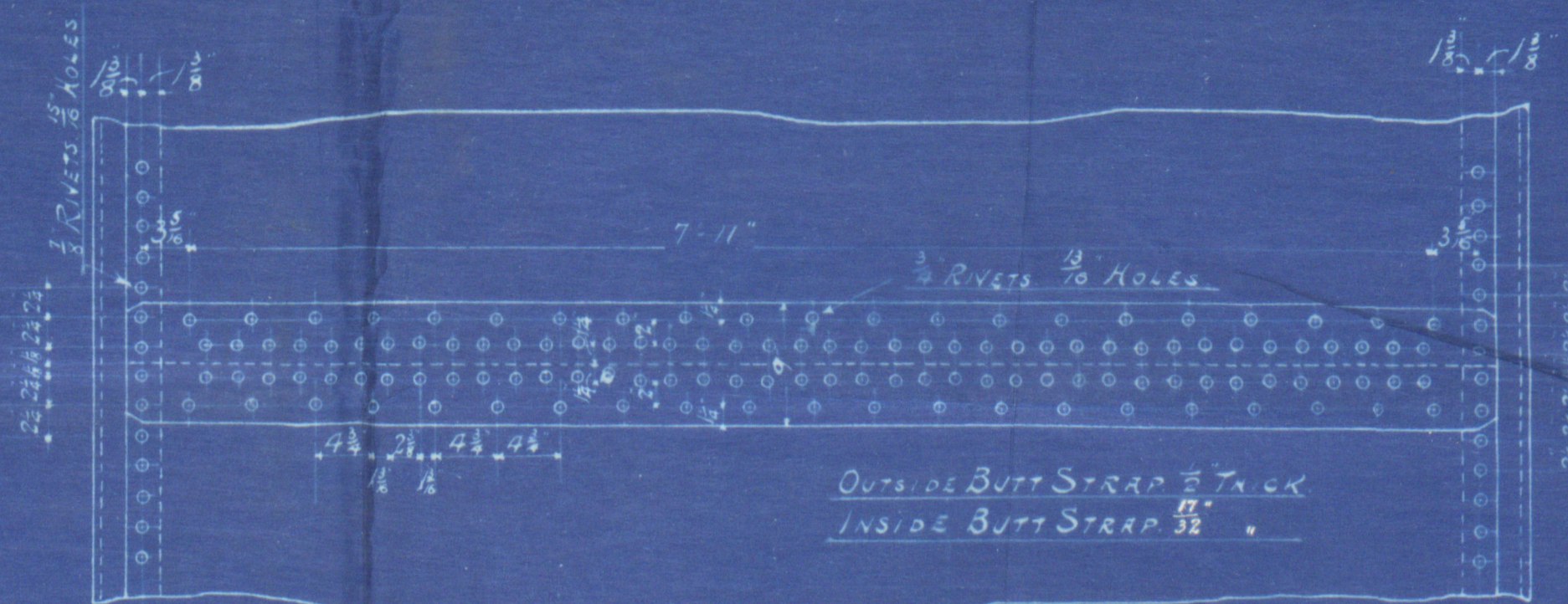


SHELL AND BUTT STRAPS	27-32 TONS
LONGIT. STAYS	27-32 "
PLATE PERCENTAGE	82.9
RIVET	97.8

2/5/07  
O.V.D.



HEATING SURFACE	
TUBES	632.2
FURNACES	60.4
COMB. CHAMBERS	103.6
TOTAL	796.2 #
GRATE AREA	29 #
FIREBARS 5'-0" LONG IN ONE LENGTH	



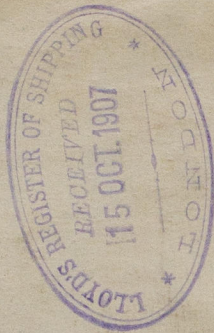
— MARINE BOILER 10'-0" INT DIA X 9'-0" LONG —  
— WORKING PRESSURE 80 LBS # —  
— SCALE 1" = ONE FOOT —

— LLOYD'S SURVEY —  
— 30 APRIL 1907 —

— JOB N° 821 — duplicate of N° 709  
— TRAC N° 193 —

W-15-0206  
Lloyd's Register  
Marine

W246-0206



Erving & Lawson

2<sup>nd</sup> 821

D B for A Rodger & Co



J. L. Helmsdale

Glasgow Report. N<sup>o</sup>. 25838.

© 2019 ..

Ingman esc

Lloyd's Register

Foundation