

# SCOTIA ENGINE WORKS

## BOILER

SCALE: 1 INCH TO ONE FOOT

WRITTEN DIMENSIONS ONLY TO BE TAKEN

9/9/10



TENSILE STRENGTH OF SHELL PLATES, BUTT STRAPS, GIRDER PLATES

1 LONGITUDINAL STAYS 28 TO 32 TONS PER INCH

ALL OTHER PLATES STAYS + RIVETS 26 TO 30 " "

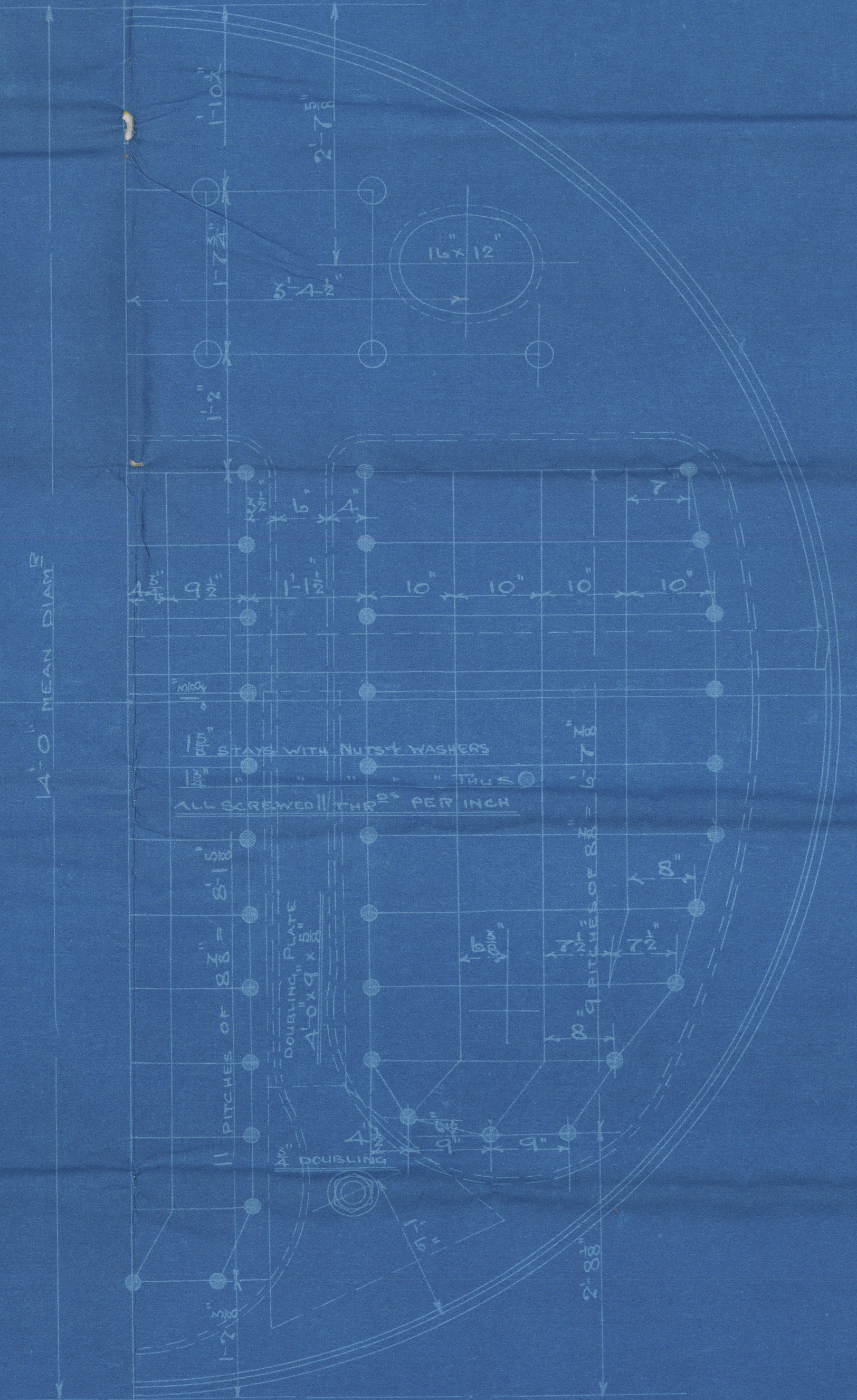
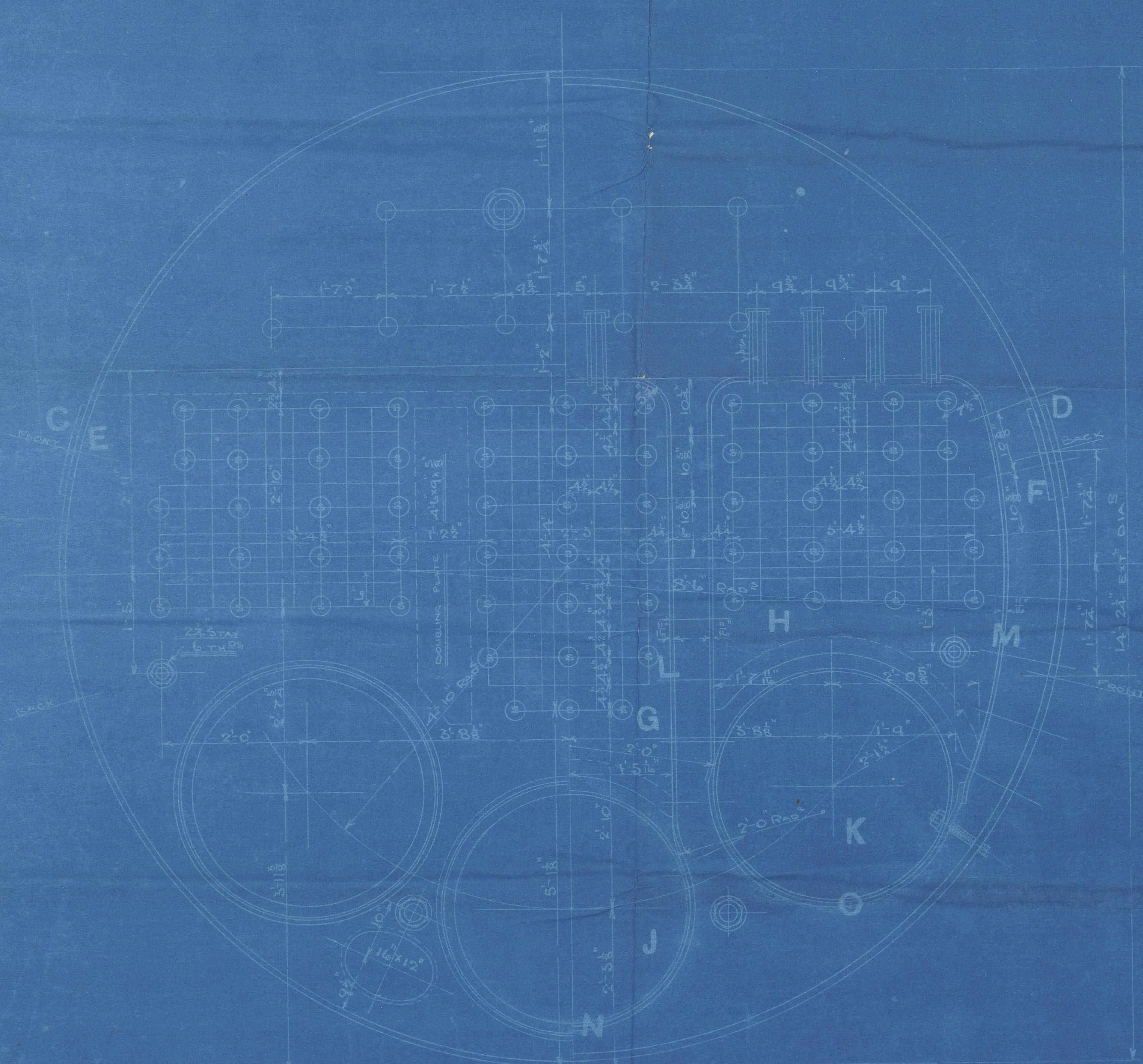
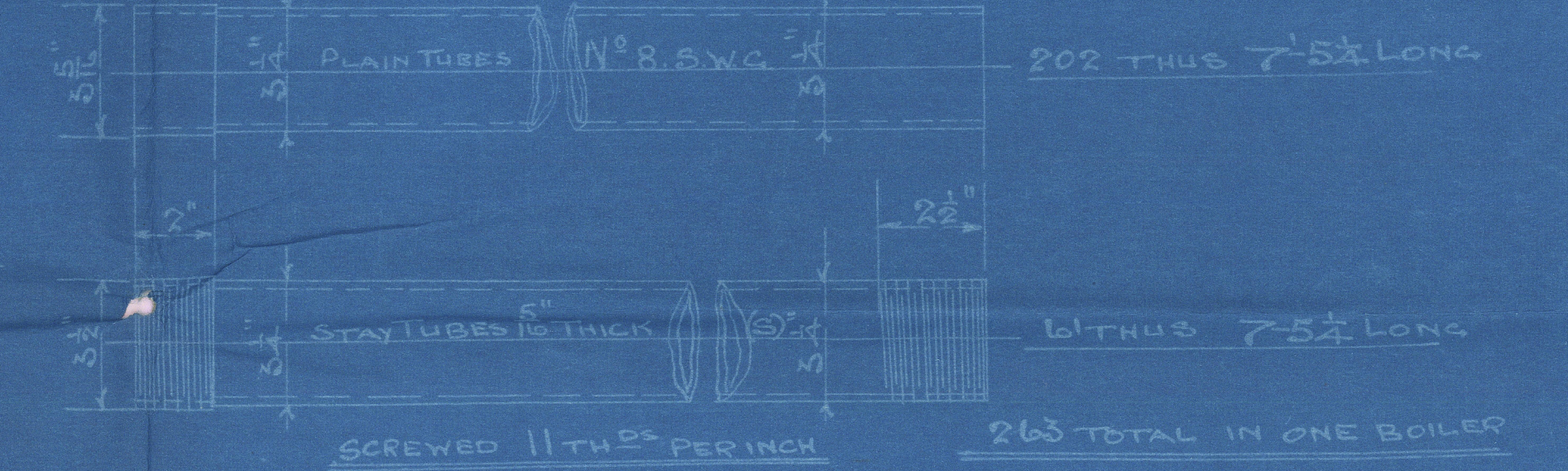
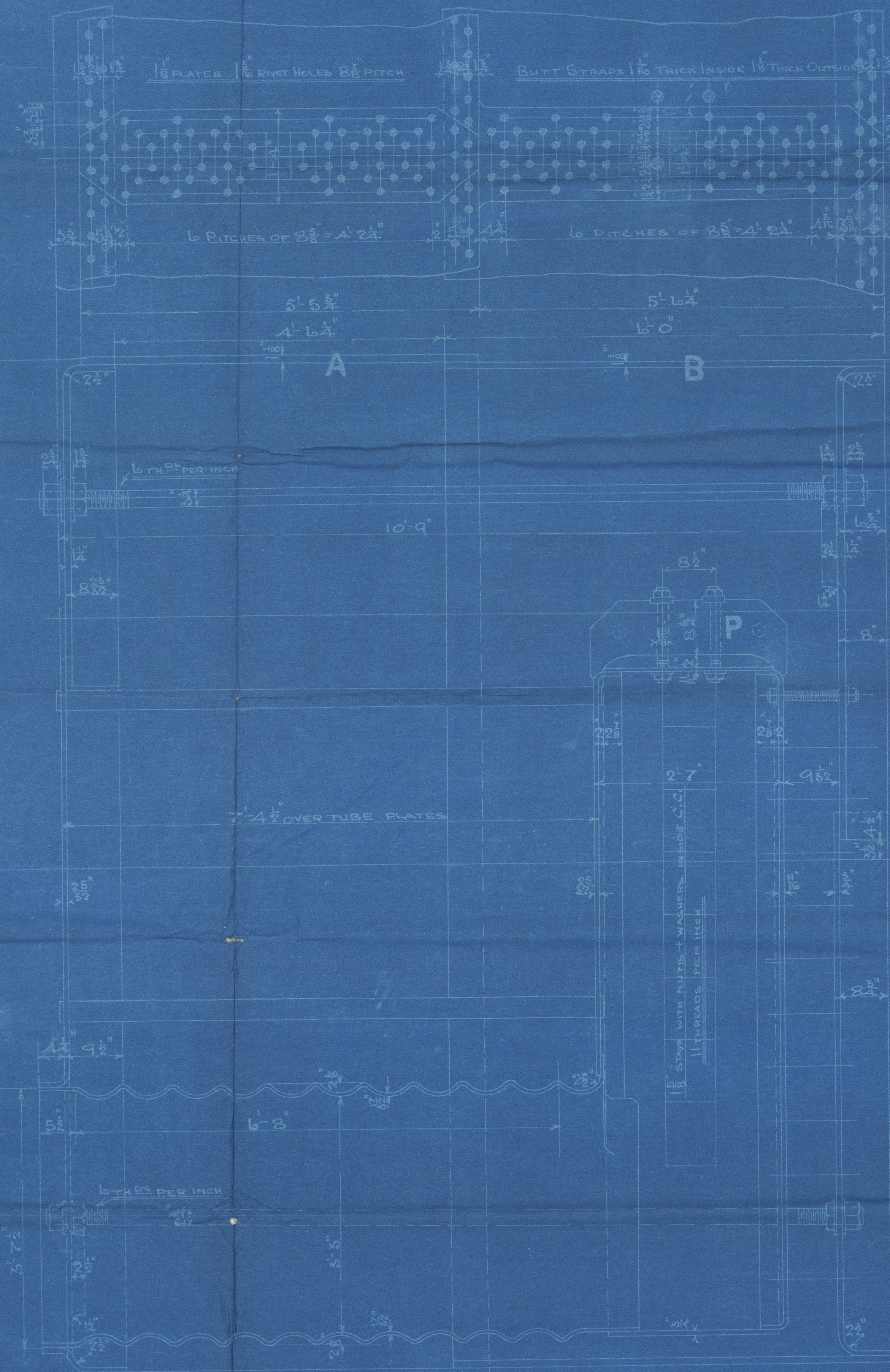
ALL PLATES STAYS + RIVETS OF STEEL

ALL TUBES OF WROUGHT IRON

ALL RIVET HOLES DRILLED IN PLACE

WORKING PRESSURE 130 LBS PER SQ INCH

TOTAL HEATING SURFACE { WITHOUT FRONT TUBE PLATES } 5940 sq



CONTRACT No 309

No OFF 3

9/9/10

9/9/10



Lloyd's Register Foundation



309

RICHARDSONS WESTGARTH  
& CO. SUNDERLAND

M. BOILERS. 3 OFF.

NORTHUMBERLAND S.B.C.  
S. S. 181

DUPLICATE 306.

Flight-Command

S. S. "ORELAND"  
EX

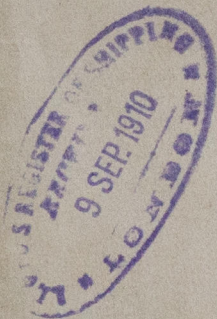
Sld. Rpt. No 24843

LLOYDS TEST

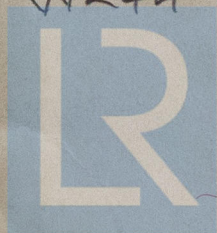
Nº 2885

360 LBS.

12-1-11 E.J.S.



W244-0169



© 2019

Lloyd's Register  
Foundation

S.J.S.  
8.9.10