

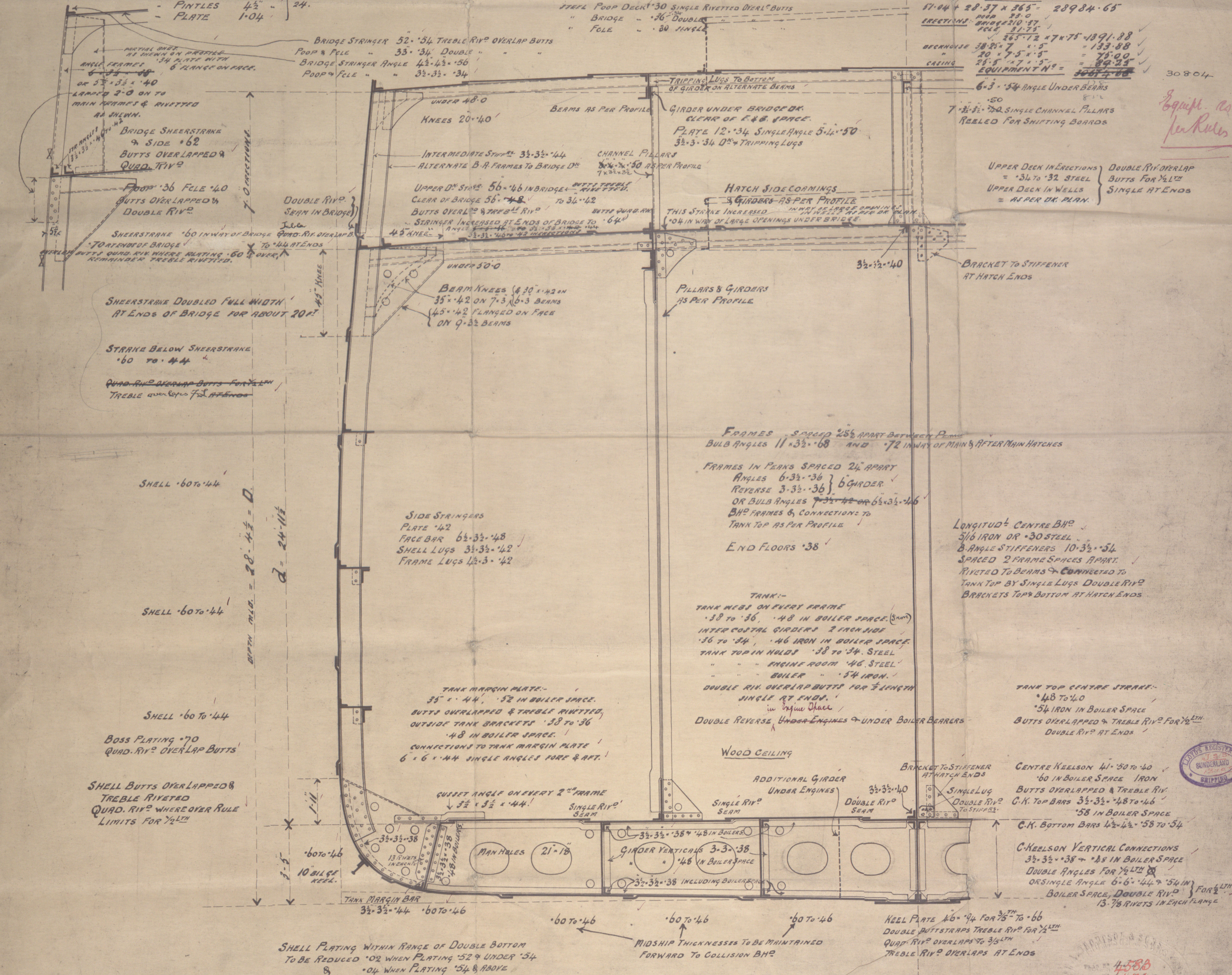
S. S. N° 471.

FORGINGS
 PROPELLER POST 10-7 1/2
 RUDDER POST 9-7 1/2
 STEM 10-2 3/4
 RUDDER SPEED 10 KNOTS
 R=140 D=2.72=380
 RUDDER HEAD 9 DIA.
 HEEL 6 3/4
 PINTLES 4 1/2
 PLATE 1-0 1/4

PRINCIPAL DIMENSIONS:-
 LENGTH B.P. 365-0
 BREADTH EXT. 51-4 1/2
 MLD. 51-0 1/2
 DEPTH MLD. 28-4 1/2
 DEPTHS TO LENGTH UPPER DECK = 12-36
 " " " BRIDGE = 10-31

NUMERALS:-
 BREADTH MLD. 51-04
 DEPTH MLD. 28-37
 LENGTH = 365
 28984-65 = LONGITUDE N°

EQUIPMENT:-
 51-04 + 28-37 x 365 = 28984-65
 ERECTIONS BRIDGE 210-37
 265-12 x 7-75 = 1391-88
 BECAUSE 38-35 x 7-5 = 133-88
 20 x 7-5 x 5 = 75-00
 28-5 x 7-5 = 213-75
 EQUIPMENT N° = 30804



J. L. Thompson & Sons Ltd.

471 Unmended

SECTION

"Elisabeth Dal."

ex

S. S. Maresfield

Sld Fbrd. No 24356

Sld F.E Rpt 24383

LN241-0200



© 2019

Lloyd's Register
Foundation