

N<sup>o</sup> 522-3  
 " " " "  
 S. S. TENO & LEBU  
 MIDSHIP SECTION

SCALE 1/2" = 1 FOOT

CLASS 100 A.I. STEEL AT LLOYD'S

DIMENSIONS - LENGTH BP 340'-0", BREADTH EX 40'-0", DEPTH 24'-0" ML  
 DIMENSIONS AS PER LLOYD'S RULES 338.33 x 39.82 x 24.83



LLOYD'S NUMERALS

DEPTH & GIRTH TAKEN TO UPPER DECK  
 1/2 BEAM 19.81  
 DEPTH TO KEEL 24.83  
 1/2 GIRTH 41.33  
 86.01 FRAME N<sup>o</sup>  
 7.00  
 19.01  
 LENGTH 338.33  
 86.151.15 PLATING N<sup>o</sup>

PROPORTIONS

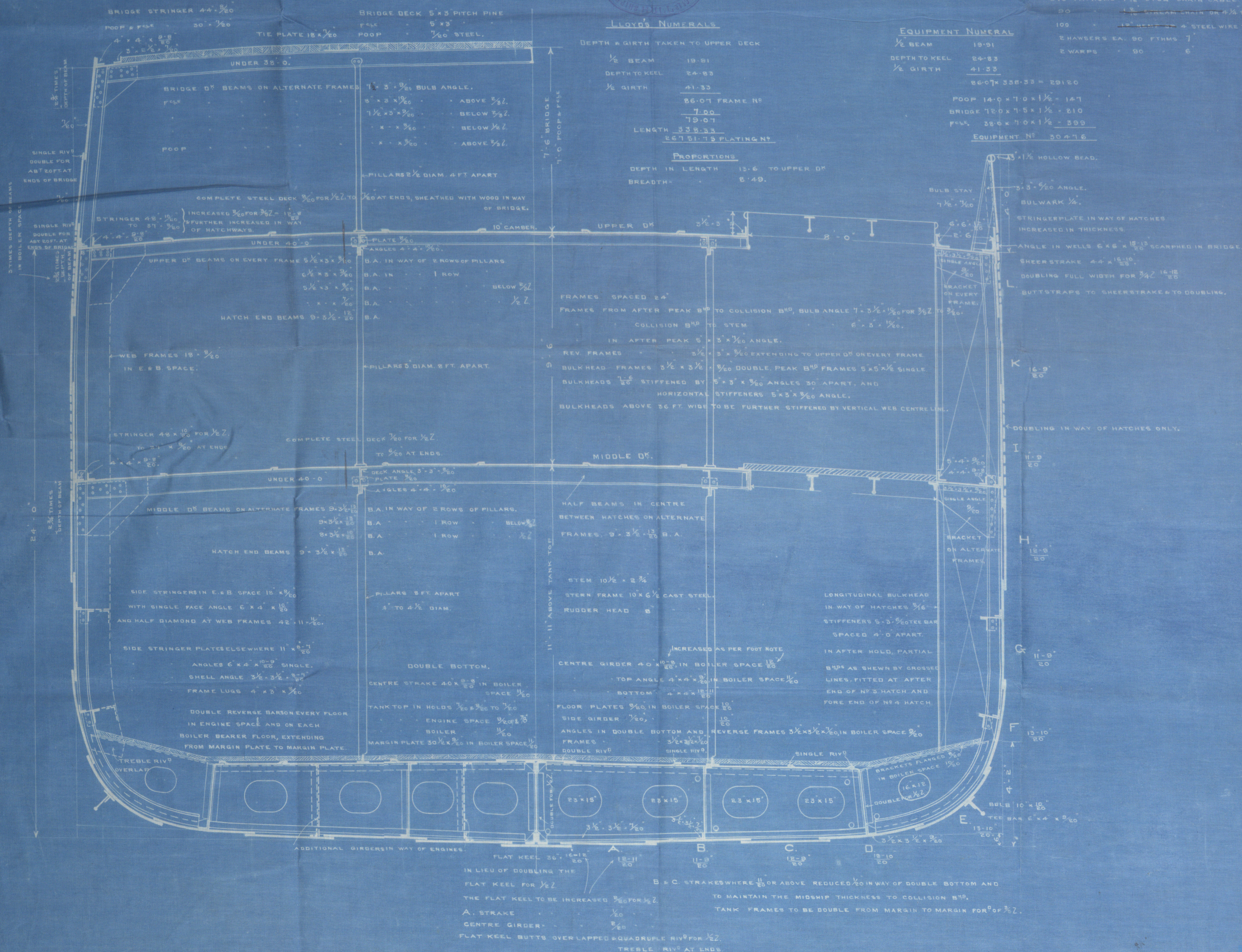
DEPTH IN LENGTH 13.6 TO UPPER DECK  
 BREADTH 8.49.

EQUIPMENT NUMERAL

1/2 BEAM 19.81  
 DEPTH TO KEEL 24.83  
 1/2 GIRTH 41.33  
 86.07 x 338.33 = 29120  
 POOP 14.0 x 7.0 x 1 1/2 = 167  
 BRIDGE 12.0 x 7.5 x 1 1/2 = 210  
 FFW 38.6 x 7.0 x 1 1/2 = 399  
 EQUIPMENT N<sup>o</sup> 30476

EQUIPMENT

2 BOWER ANCHORS EA. 45 CWT. STOCKLESS  
 1 ANCHOR 35  
 1 STREAM 12 EX. STOCK  
 1 KEDGE 5 1/2  
 270 FATHOMS 1 1/2 STUG CHAIN CABLE  
 50 1 1/2 STREAM CHAIN OR 4 1/2 STEEL WIRE  
 100 1 1/2 HENT OR 4 STEEL WIRE TOWLINE  
 2 HAWSEY EA. 90 FTHMS 7  
 2 WARPS 90 6





Earle's S. & E. Co.

Nos 522 + 3.

Duplicate.

Midship Section.

s/s Lebu

Skull Report No. 18586

Now named "Don Ricardo"

W241-0124



© 2019

Lloyd's Register  
Foundation