

7/11/28

LLOYD'S NUMERALS.

$$L \times D = 374.5 \times 34 = 12733.$$

$$L \times (B+D) = 374.5 \times (52.75 + 34) = 32,487.87$$

$$\frac{L}{D} = \frac{374.5}{34} = 10.855$$

SHIP No 411.

PROFILE + DECK PLANS.

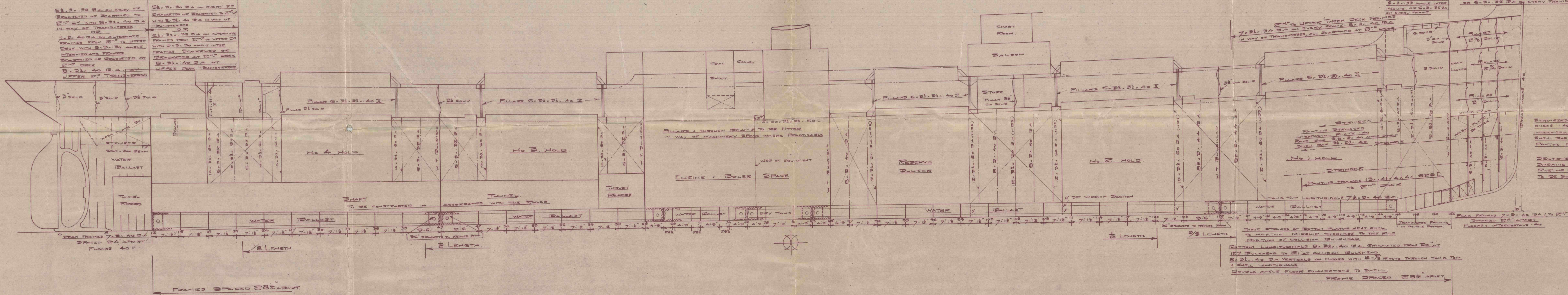
DIMENSIONS:- LENGTH (AT 2ND DECK) 375'-0", BREADTH MLD 52'-9", DEPTH MLD 34'-6" TO UPPER DECK
" 26'-0" TO 2ND DECK

" ISHERWOOD COMBINATION SYSTEM "

SCALE 1/8" = 1'-0"

TO CLASS LLOYD'S 100 A.1. WITH FREEBOARD.

MASTS, WINCHES, WINDLASS, + STEERING GEAR, SUPPORTED TO SURVEYORS SATISFACTION.



UPPER DECK

UPPER DECK

2ND DECK

2ND DECK

SIR JOSEPH W. ISHERWOOD & CO. L.
4, LLOYD'S AVENUE,
LONDON, E.C.3.
FOR ENCLOSURE TO
DATE 8/11/28

The Northumberland S.B. 6° (1924) Ltd.
Hull - on Ship.
Ordered No 1899 Plan No. 6975.

2

Profile and decks

W^P. 411

Northumberland SB Co (1927) Ltd.

"Dahomian"

S.S. Themoni
NEWCASTLE ON TYNE.

v. v. Dahomian

Report No. 84294

W239- 0044



© 2020

Lloyd's Register
Foundation