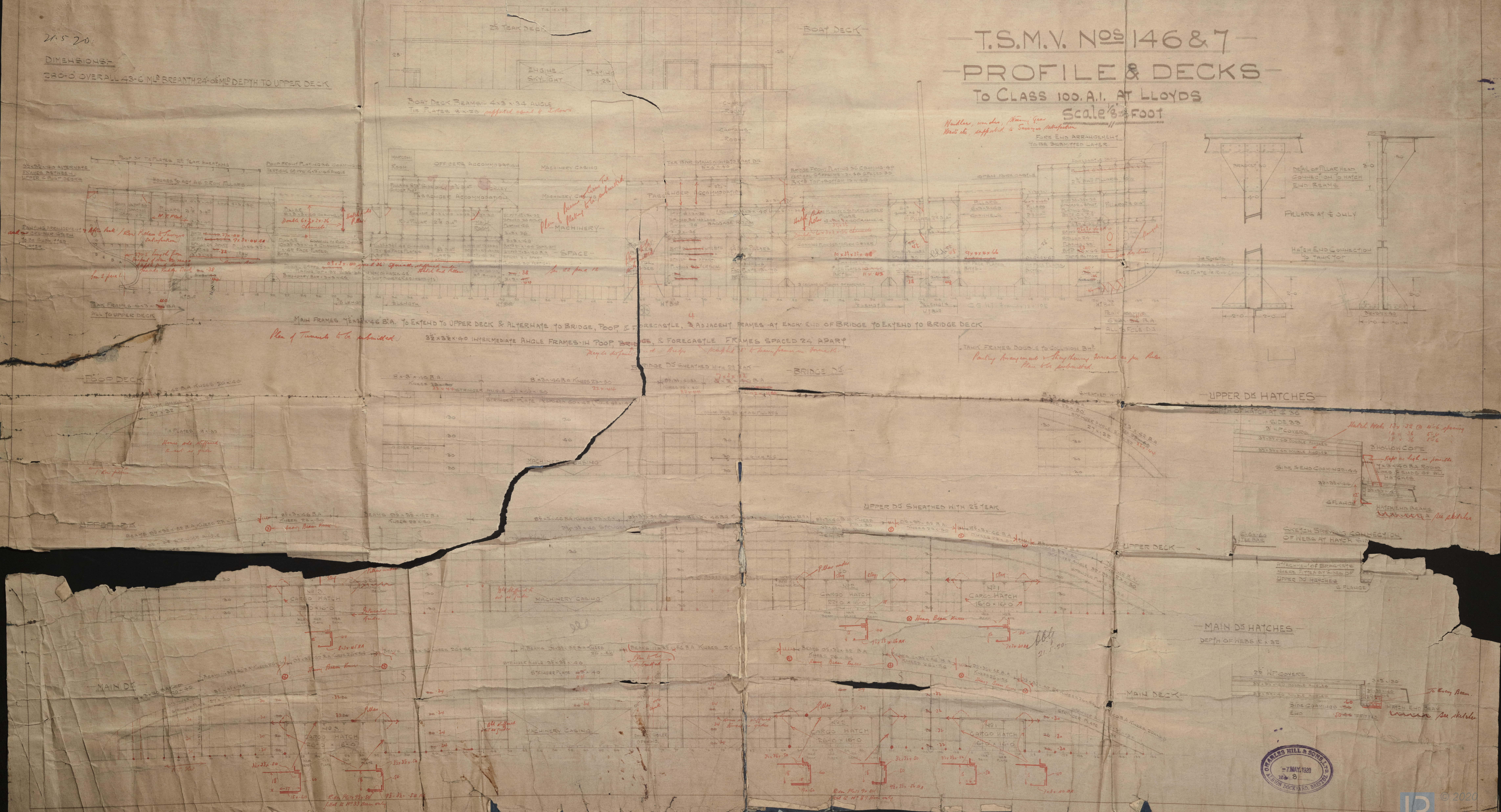
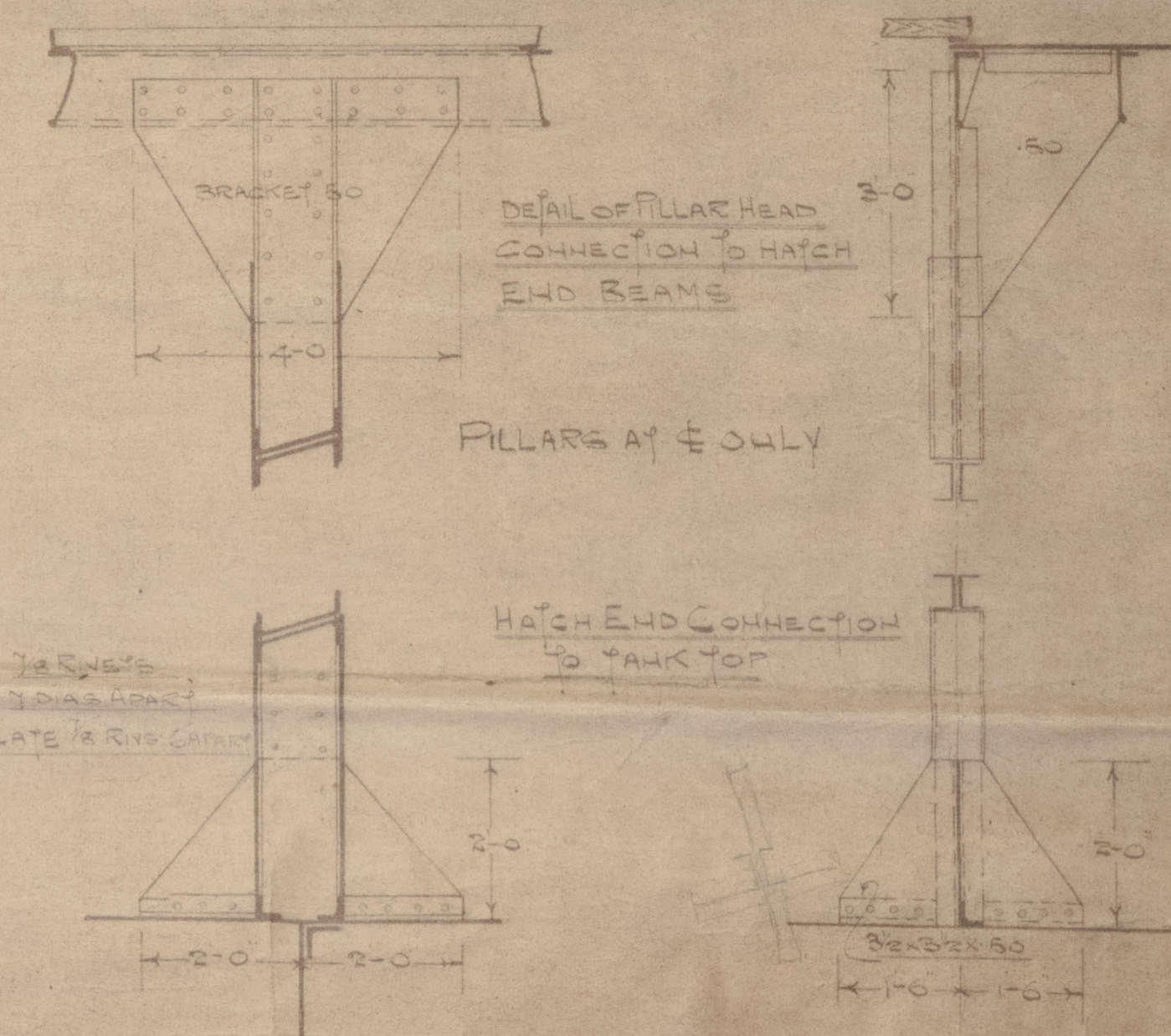


Scale $\frac{1}{8}$ " = Foot

Winders, over door, Steaming Gear
Wrestle etc, supported to Surgeons Satisfaction

FORE END ARRANGEMENT
TO BE SUBMITTED LATER



A circular purple ink stamp from Charles Hill & Sons Ltd, Albion Dockyard, Bristol. The text "CHARLES HILL & SONS LTD" is curved along the top inner edge, and "ALBION DOCKYARD, BRISTOL" is curved along the bottom inner edge. In the center, the date "7 MAY 1920" is stamped horizontally, with the number "8" printed below it.

Bag 1.

Profile & Decks.

L. D. Dummer

Ans. 10999

S/S. Dwarka

Bro 11063

W239-0034

CHARLES HILL & SONS
BRISTOL
FOR EXPORT
145x7

FROM

CHARLES HILL & SONS.

BRISTOL

FOR ENCLOSURE.

To Messrs.

Lloyd's Register of
Shipping
Queen's Square,
BRISTOL.

Woolwich & Partners

Hells 146 x 7
Mastship Section
&
Profile

N239-0034



© 2020

Lloyd's Register
Foundation