

SS "CITY OF HANKOW"

DETAIL OF THRUST. & INTERMEDIATE SHAFTS ETC.

JOB N° 9165.E

TO BE TO LLOYDS LATEST TESTS & REQUIREMENTS

CYLINDERS & STROKE OF MAIN ENGINE:- 26 1/2" x 37 1/2" x 54" x 78"
 ORIGINAL POWER OF ENGINE (WITHOUT S.W. INSTALLATION) :- 4160 I.H.P. @ 80 R.P.M.
 ESTIMATED POWER WITH BAUER WACH INSTALLATION :- 4650 I.H.P. @ 84 R.P.M.

No. 103234

B1294



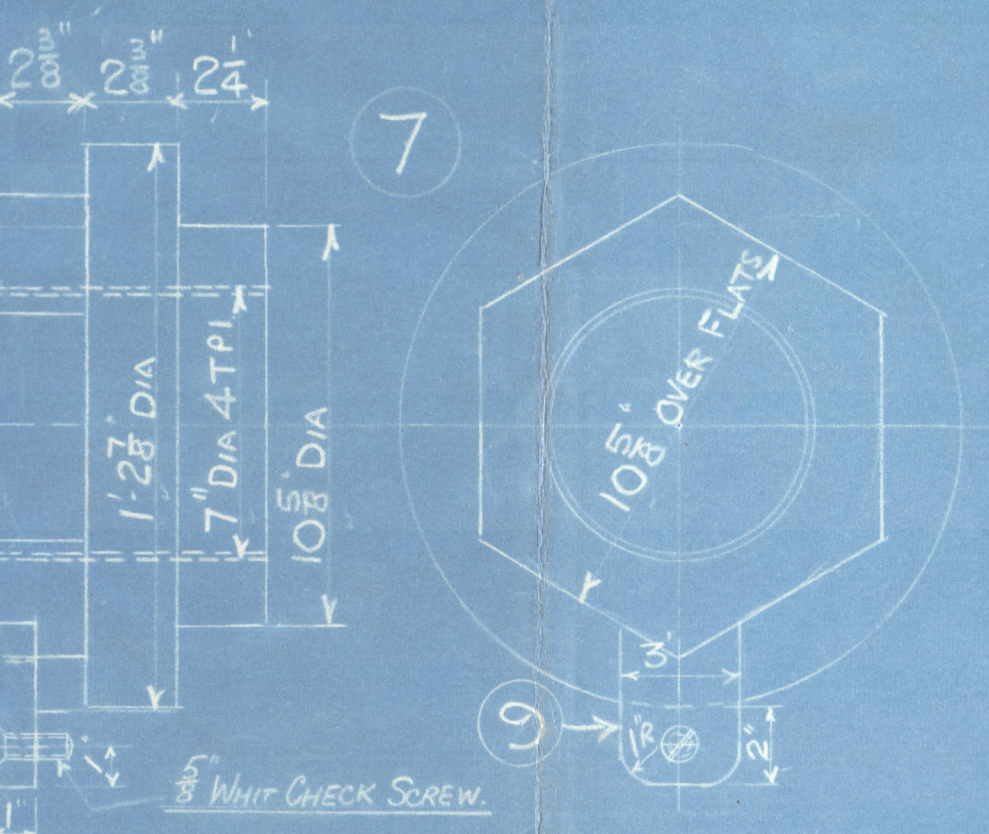
BOLT HOLES TO BE DRILLED FROM EXISTING LINE SHAFT COUPLING.

ADDITIONAL METAL TO BE LEFT ON THICKNESS OF COUPLING FOR FINISHING TO PLACE.

SMOOTH TURNED FOR BEARING

END OF SHAFT TO BE MACHINED FLUSH WITH FACE OF LOOSE COUPLING. BOTH COUPLING FACES MUST BE PERFECTLY FLAT & BUTT ACROSS THE ENTIRE SURFACE.

SECTION THRO' AA
LOOKING AFT.



DETAIL OF NUT & LOCKING PLATE

DETAIL OF KEY FOR LOOSE COUPLING

SECTION THRO' BB.
LOOKING FOR.

LIST OF PARTS REQUIRED

MARK	DESCRIPTION	MATERIAL	Nº OFF	ORDERED ON	REMARKS
1	THRUST SHAFT	FORGED STEEL	ONE	MACH. SHIP COPY	FORWARDS ORDERED OUT
2	LOOSE COUPLING	"	ONE	"	"
3	INTERMEDIATE SHAFT	"	ONE	"	"
4	BOLTS FOR LOOSE COUPLING	STEEL W.I. NUTS	8	"	"
5	" " INTERM. SHAFT	"	9	"	"
6	KEY FOR LOOSE COUPLING	STEEL	2	SMITHY COPY	"
7	NUT FOR THRUST SHAFT	WROOT IRON	ONE	"	"
8	SPANNER	STEEL	ONE	"	"
9	LOCKING PLATE FOR NUT	"	ONE	FITT. SHOP COPY	"

Amended from plan approved 2/1/33
 Amended consists of altering taper of loose coupling from 1/16" to 1/8"