

S.S. CITY OF VENICE. MOTOR ROOM & SEATS.

SCALE 1/2"=ONE FT

RIVETING
MOTOR ROOM BULKHEAD
LARKS & LARS 3/4" DIAM RIVETS 3/8" APART
BOUNDARY ANGLES TO BULKHEADS 3/4" DIAM RIVETS 3/8" APART
BOUND ANG TO TANK TOP & DECK 3/4" DIAM RIVETS 3/8" APART
STIFFENERS 3/4" DIAM RIVETS 3/8" APART
BEAMS CLEAR OF LARS 3/4" DIAM RIVETS 3/8" APART
GIRDER CHOCKS BOTH FLANGES 3/4" DIAM RIVETS 3/8" APART
FACE ANGLES TO GIRDER 3/4" DIAM RIVETS 3/8" APART
RIVETS IN ENDS OF STIFFERS MARKED X 3/4" DIAM SPACED 4 INCHES
APART FOR 12" OF LENGTH OF STIFFENER

SEATING
ALL CONNECTIONS 7/8" DIAM RIVETS 4/8" APART
TOP PLATES TO BE FLUSH RIVETED & TRUE & AS FLAT AS POSSIBLE

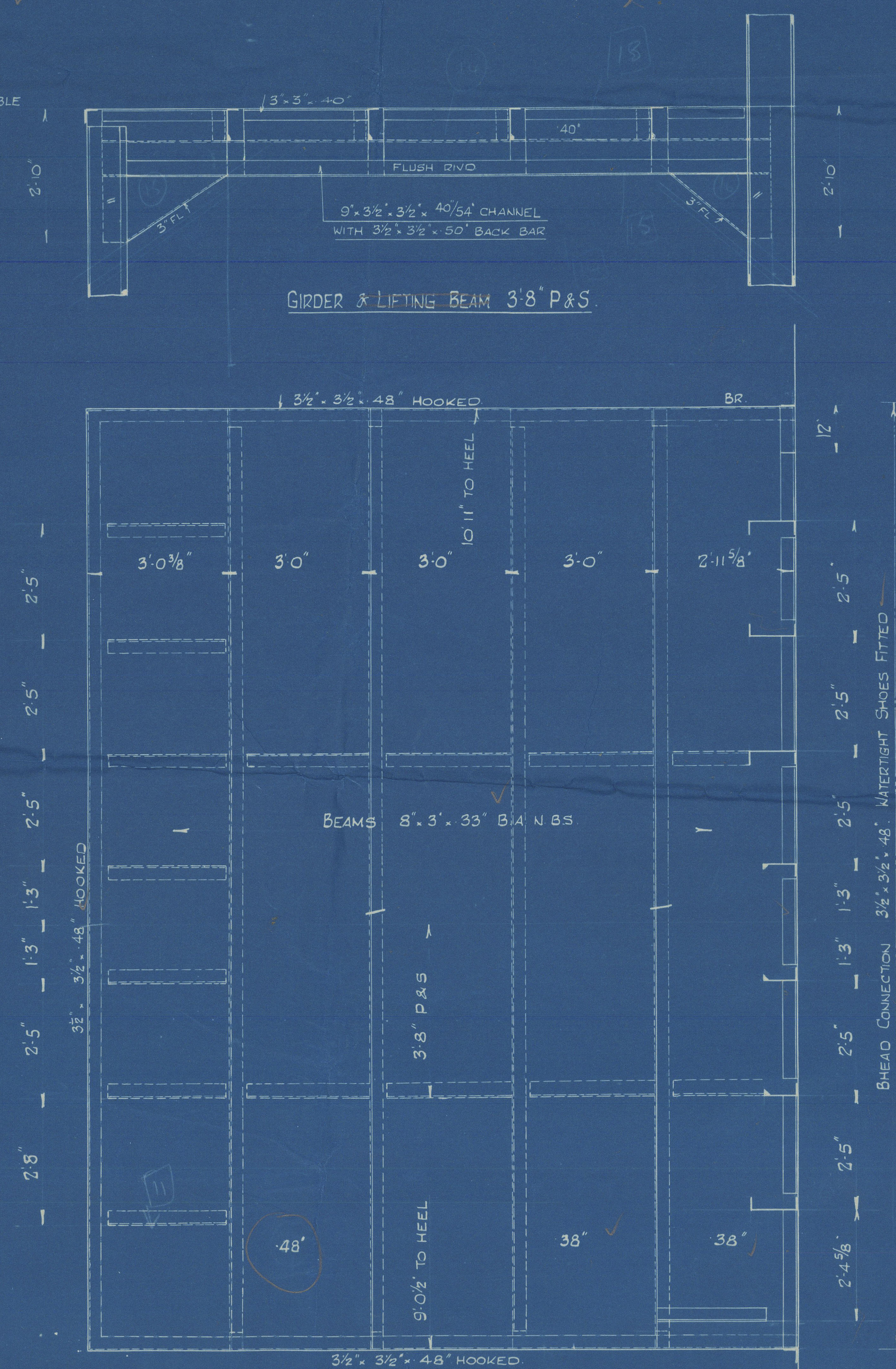
PLAN ON TOP OF MOTOR SEAT



ELEVATION AT CENTRE LINE
LOOKING TO PORT

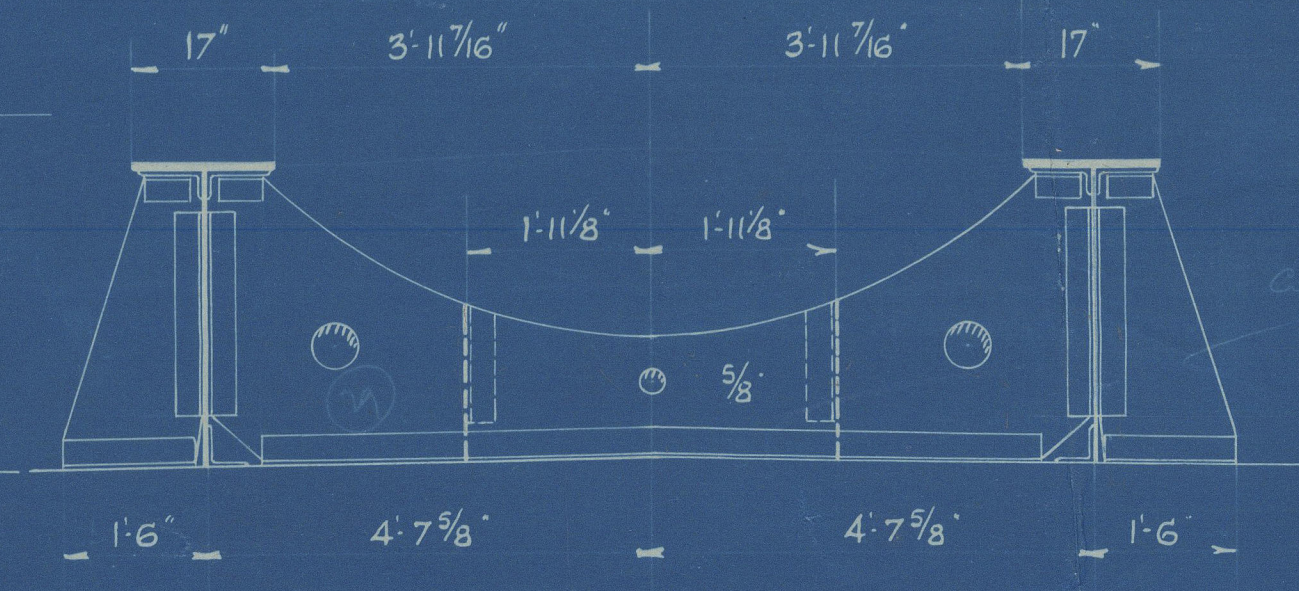
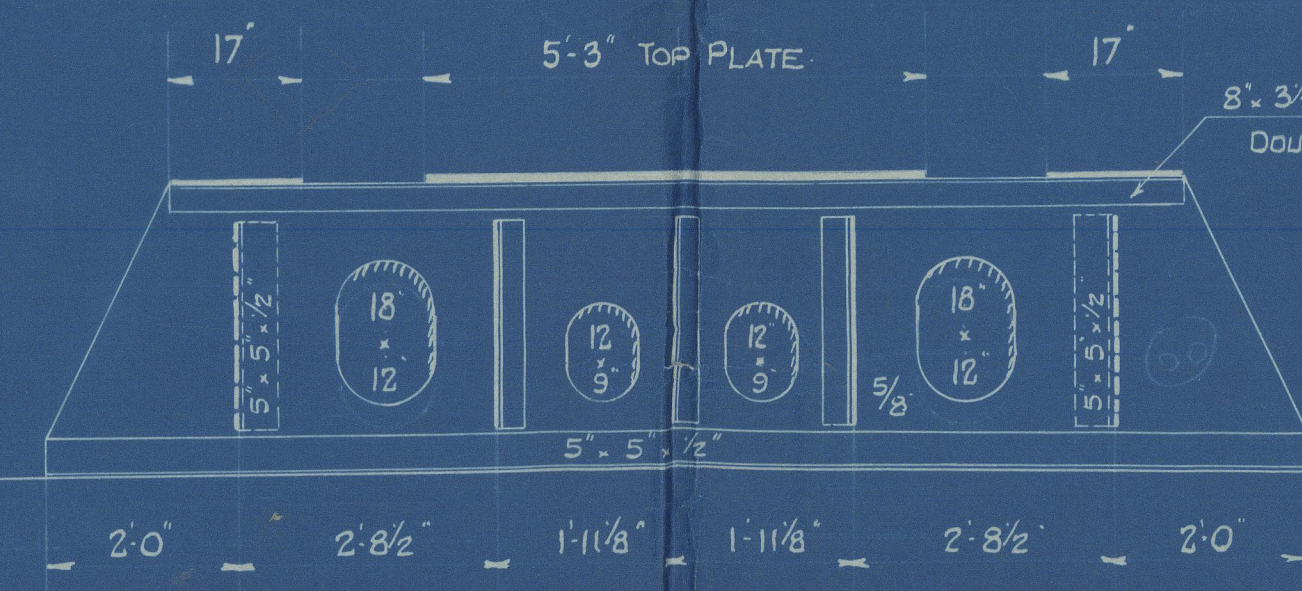
ELEVATION 4'7 3/8" FROM CR P&S
LOOKING FROM CR

ELEVATION 1'11 1/8" FROM CR P&S
LOOKING FROM CR



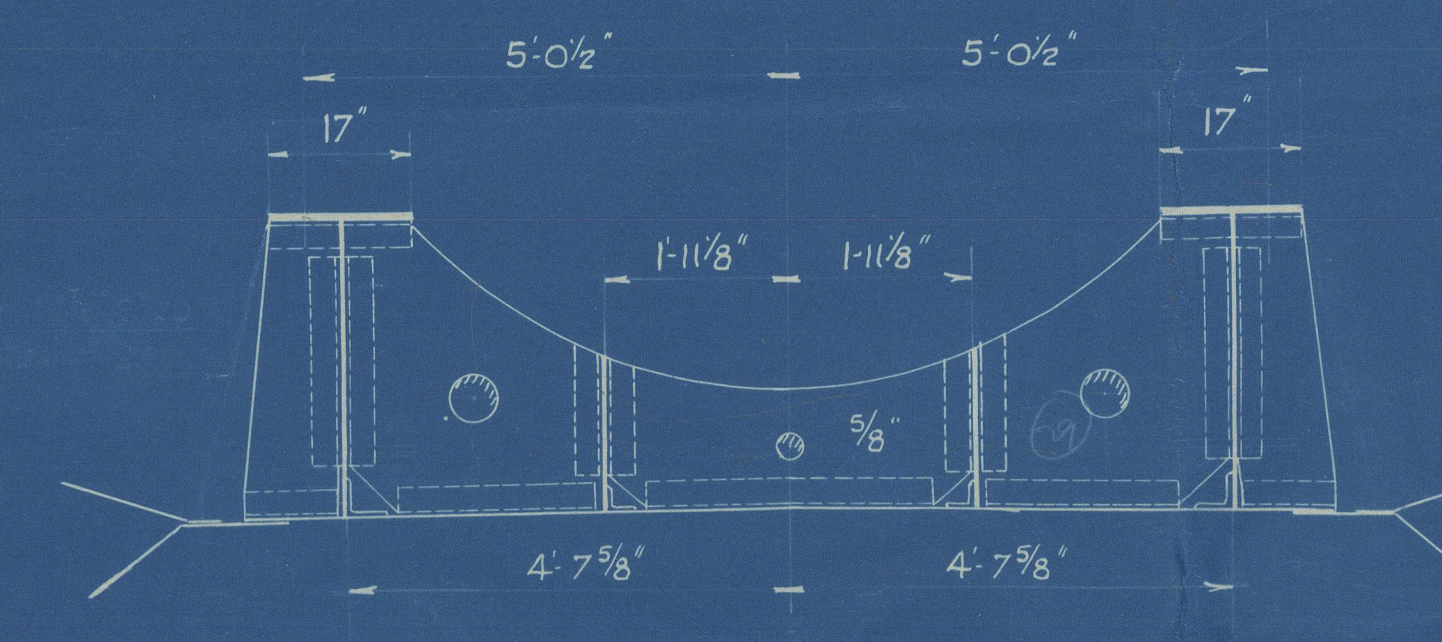
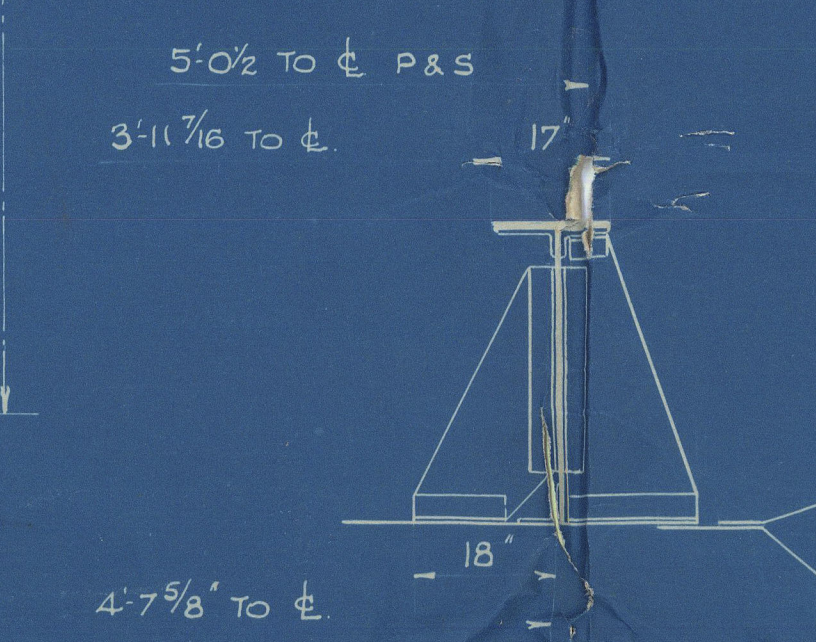
SECTION 1'10 3/8" FORD FR 28
LOOKING AFT

SECTION 1'7 1/8" FORD OF FR 27
LOOKING AFT



SECTION 4' FORD FRAME 27
LOOKING AFT

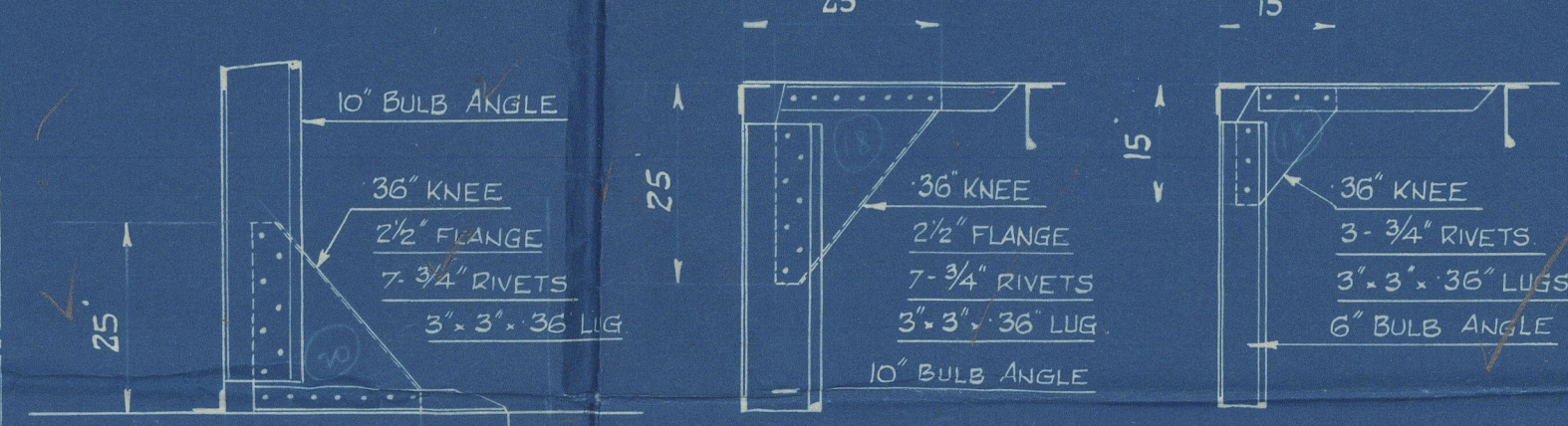
SECTION 1'6 3/4" AFT OF FR 27
LOOKING AFT



BRACKETS AT BHEAD FRAME 25

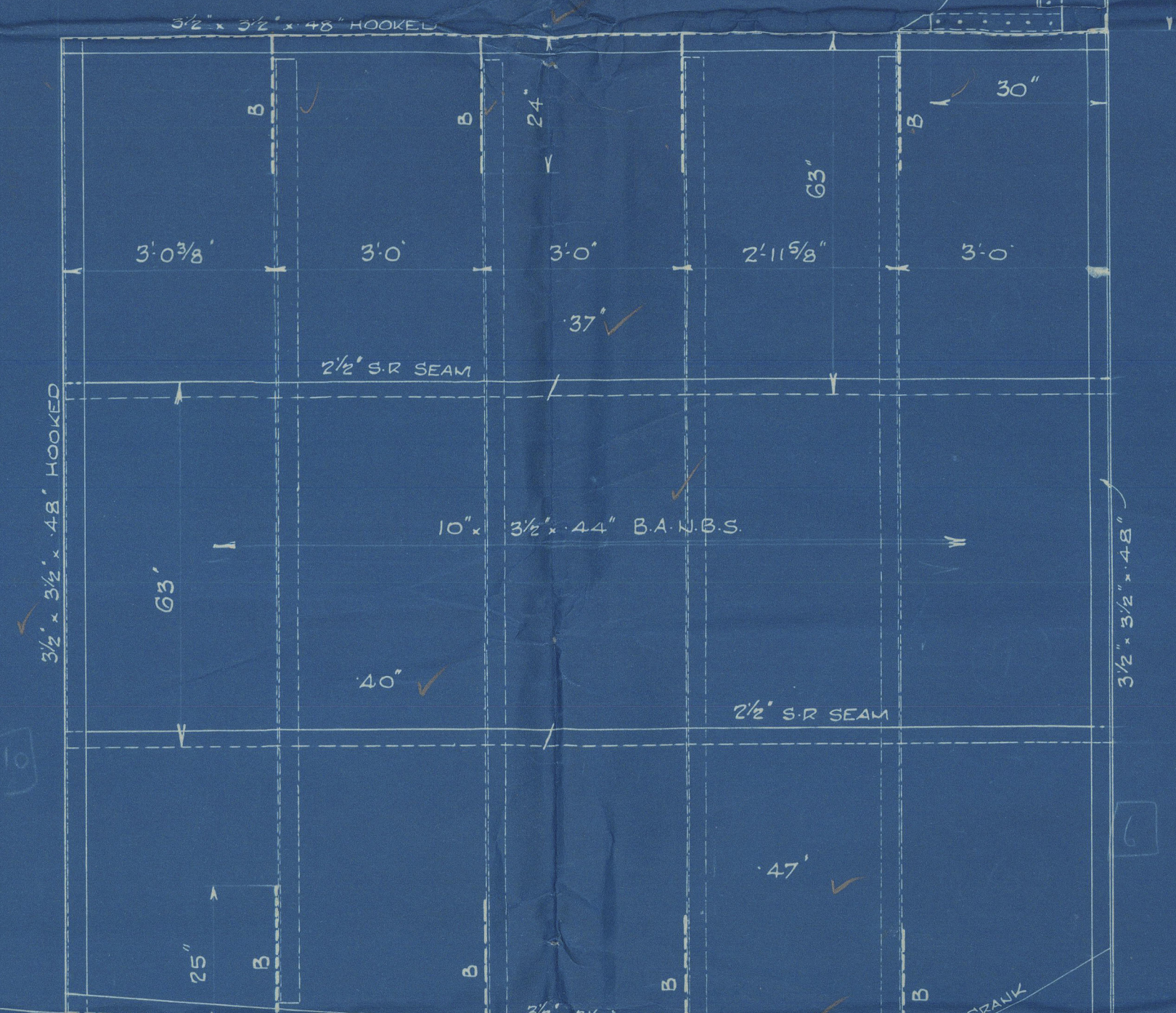
MOTOR SEAT TOP PLATE 100" THICK
SIDE PLATES 58" THICK
ANGLES EXCEPT WHERE OTHERWISE
SHOWN 3 1/2" X 3 1/2"

SECTION 4 1/4" AFT OF FR 26
LOOKING AFT



SECTION AT FRAME 25
LOOKING AFT

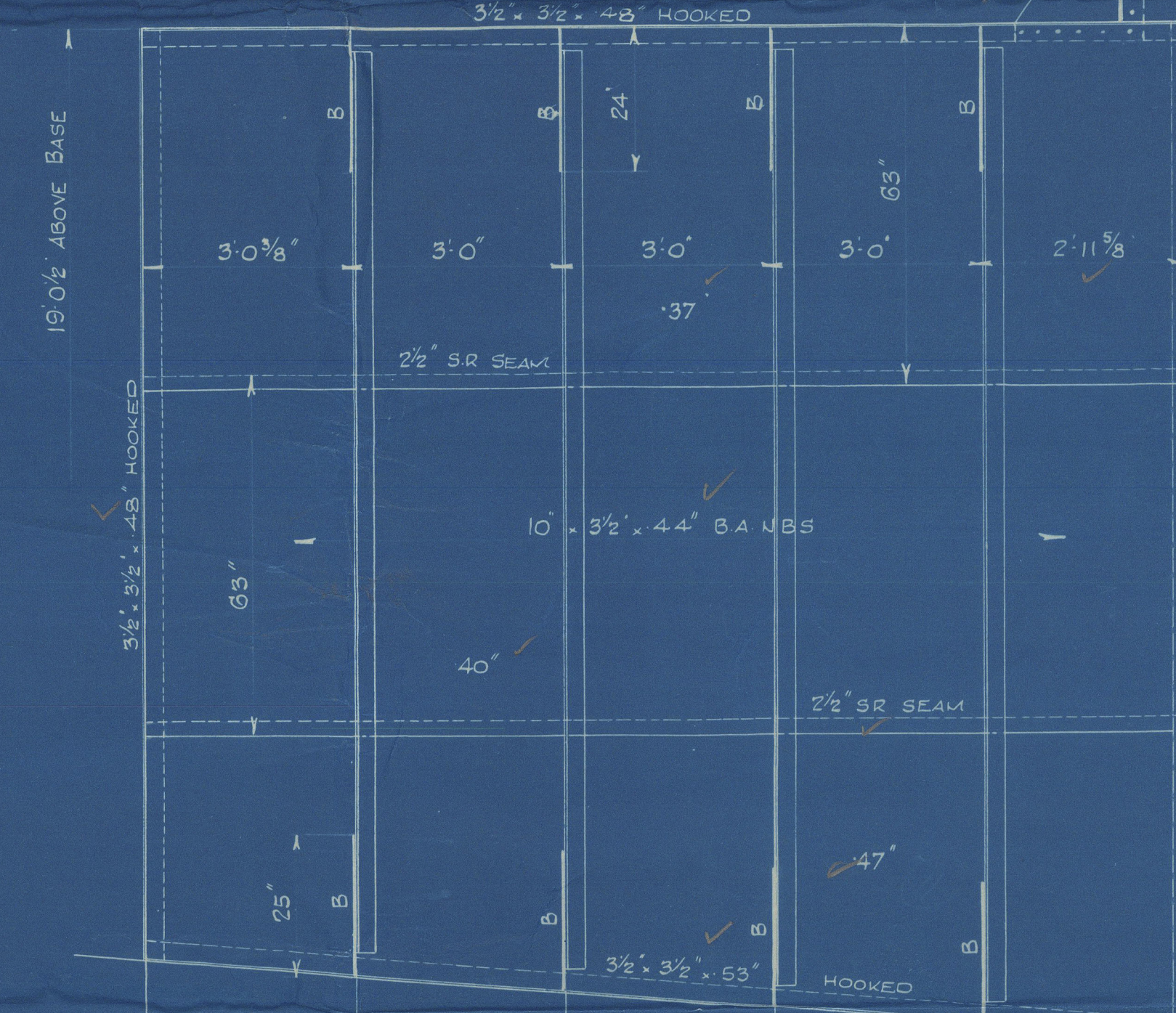
BRACKETS AT LONGITUDINAL BHEADS



ELEVATION 9'0" TO STARB
LOOKING TO CENTRE

ELEVATION 10'11" TO PORT
LOOKING FROM CR

SECTION AT FRAME 30
LOOKING AFT



"city of Venice"

Bel. 11156.

Motor room + seats.

W236-0115



© 2020

Lloyd's Register
Foundation