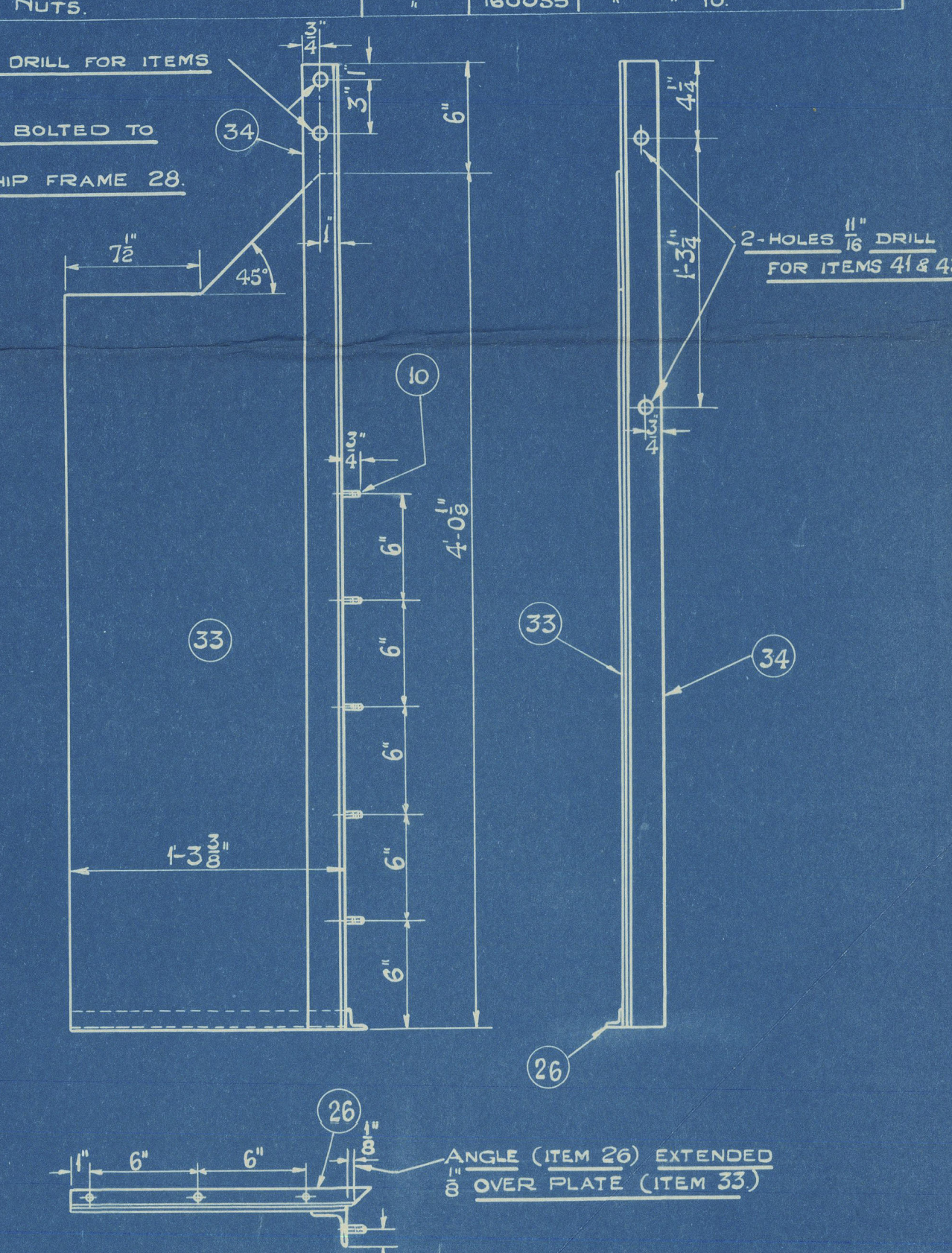
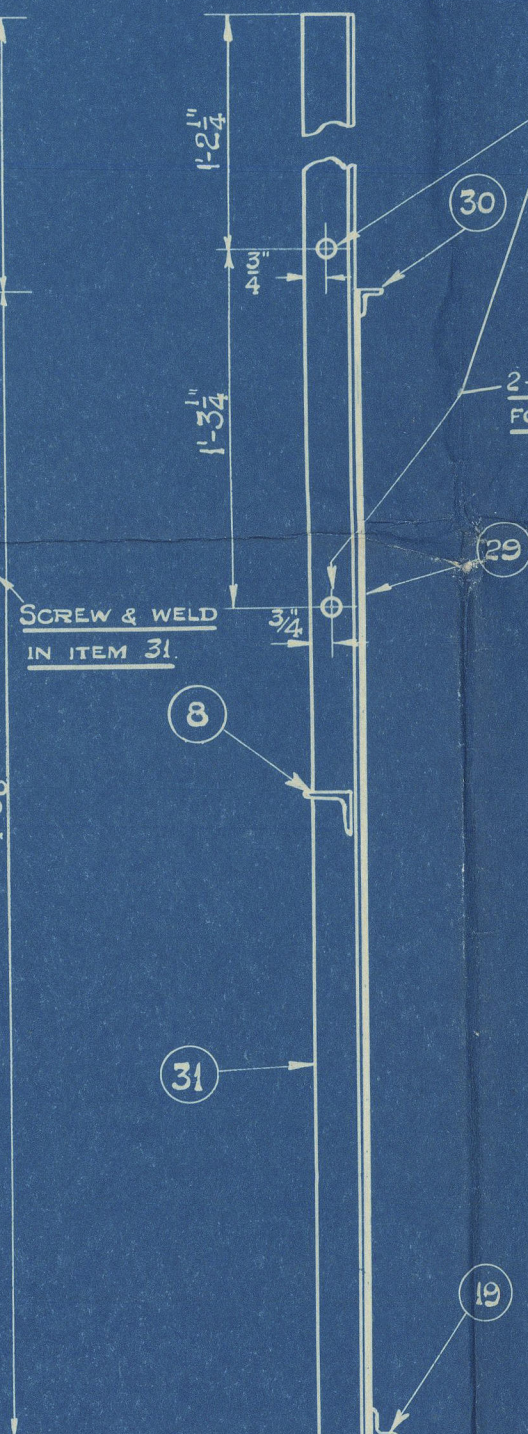
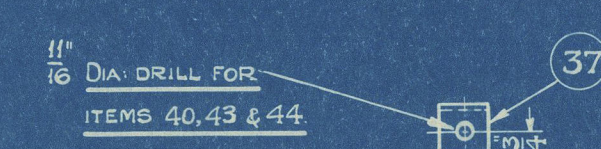
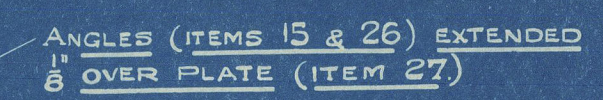
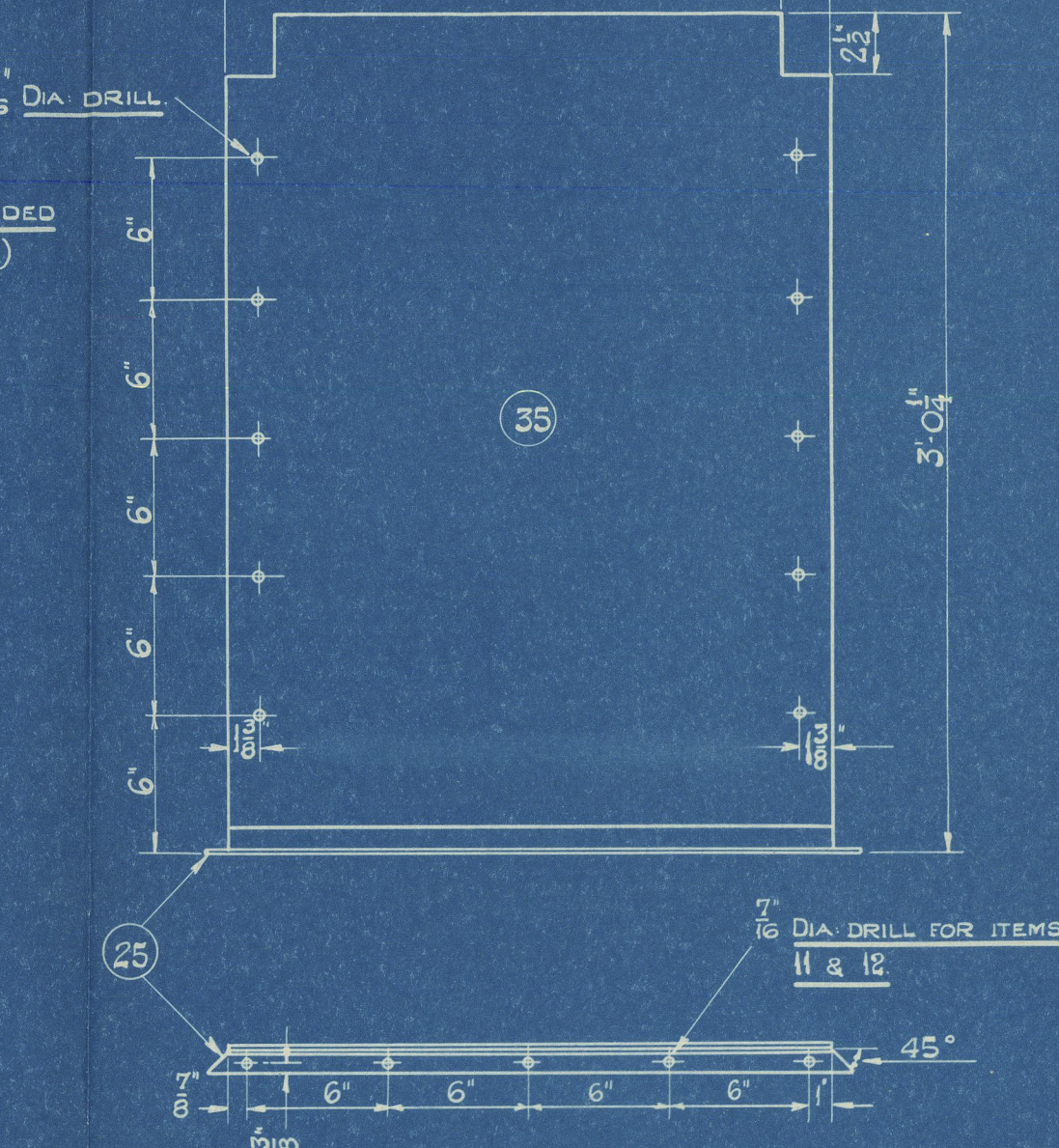
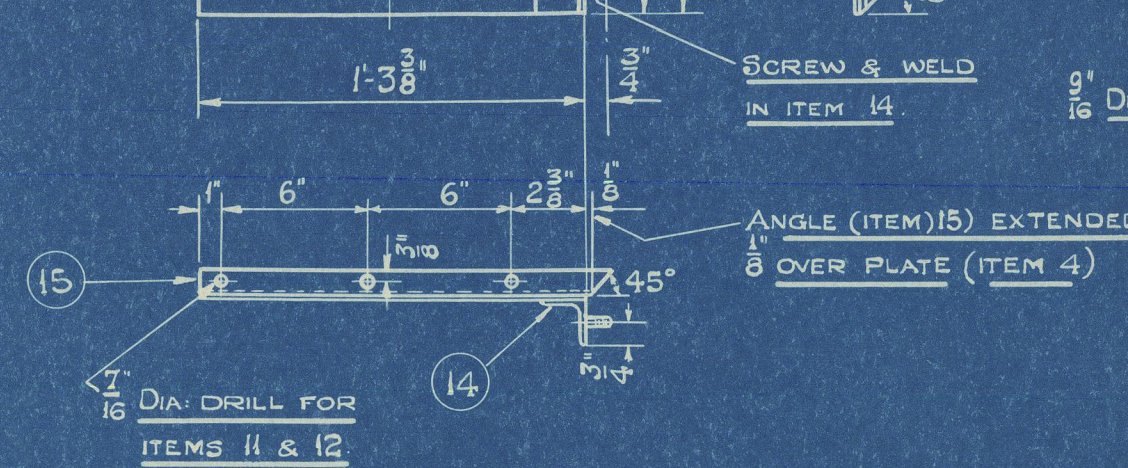
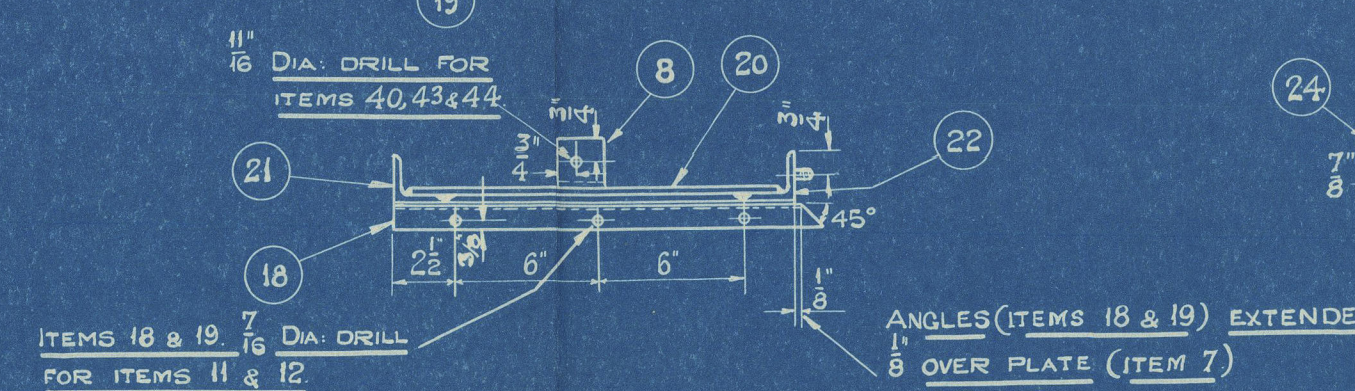
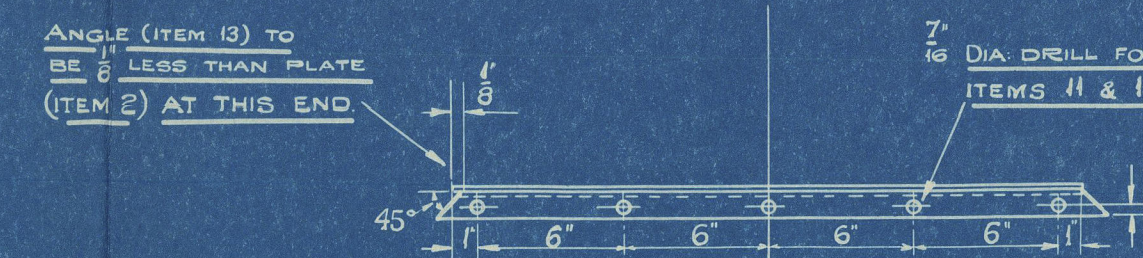
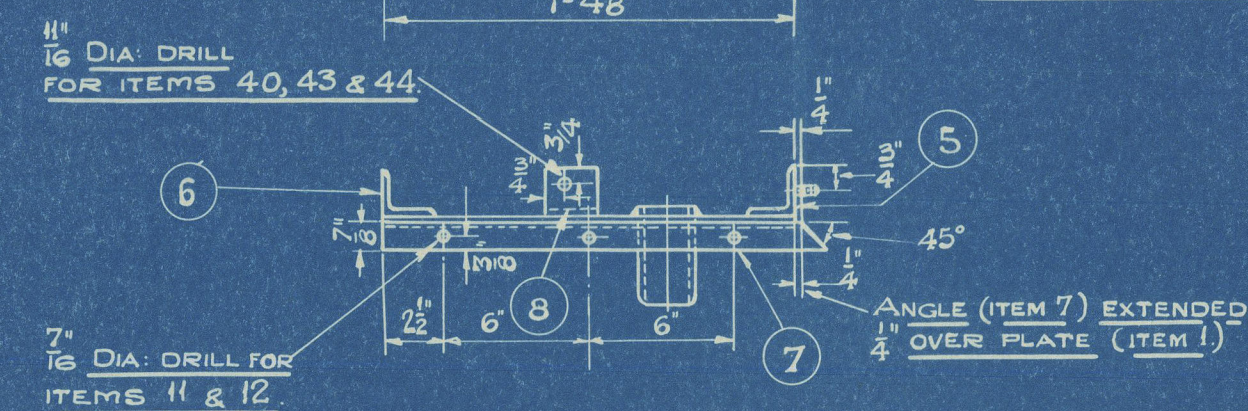
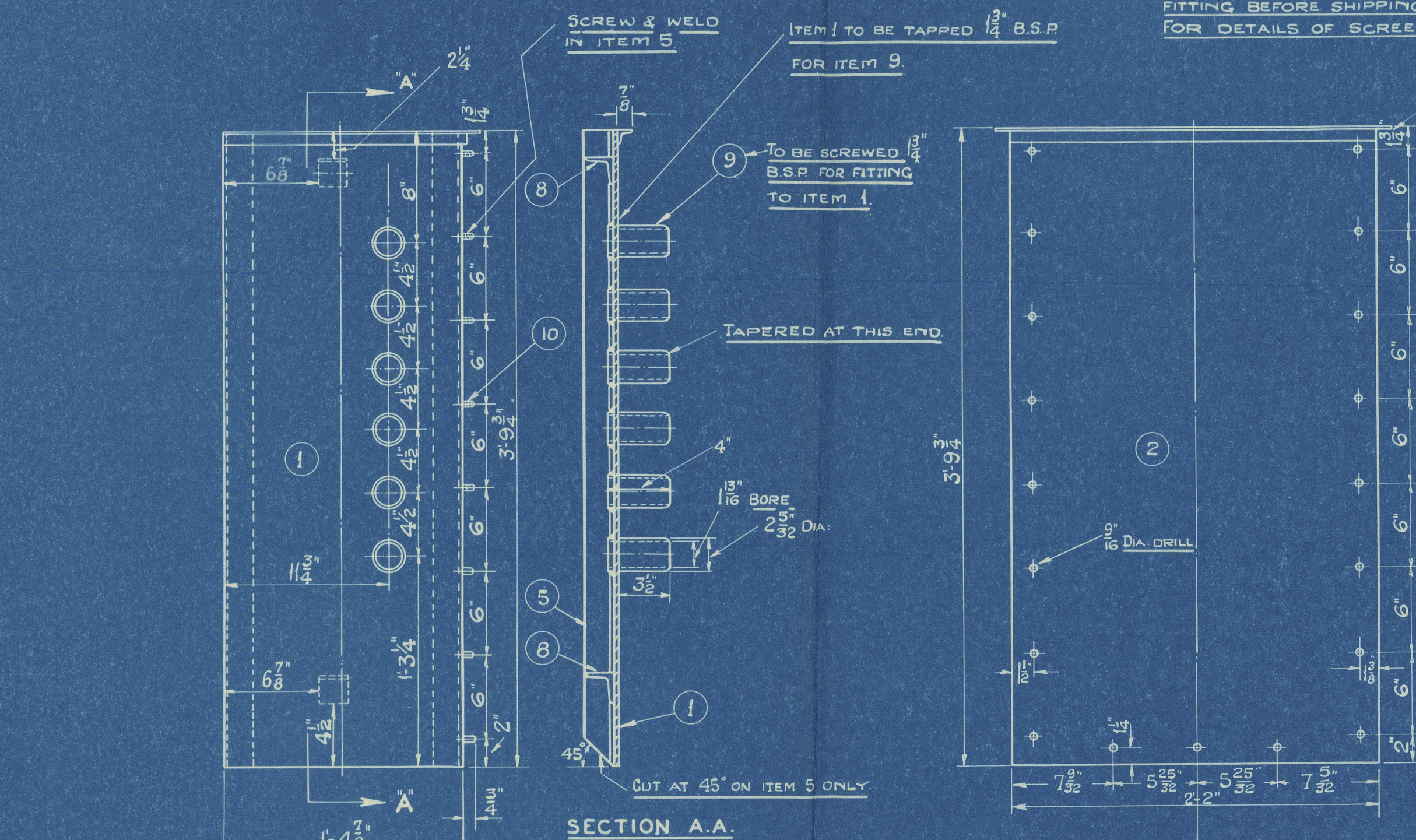


BILL CONTINUED.									
46	24"0	1/8 THK.	WHITE FELT	PACKING 2' WIDE	FELT				FOR COVERS ITEMS 2, 23 & 35
TOTAL LENGTH OF 1" x 1" x 1/8" ANGLE BAR TO MAKE ITEMS SPECIFIED IN BILL						22'6"			
"	"	"	"	2' x 2' x 1/4"	"	"	"	"	42'6"
"	"	"	"	1/8 SHEET STEEL	"	"	"	"	2 SHTS 8'0" x 4'0"

BILL OF MATERIAL					
ITEM#	QTY	DESCRIPTION	MATERIAL	DWG. N°	REMARKS
1	1	$\frac{1}{2}$ x 1-4 $\frac{1}{2}$ x 3-9 $\frac{1}{2}$ LG. PLATE.	STEEL	160216	STOCK FS
2	1	$\frac{1}{8}$ x 2-2" x 3-9 $\frac{1}{2}$ " "	"	"	" "
3	1	$\frac{1}{8}$ x 1-4 $\frac{1}{2}$ x 2-2" " "	"	"	" "
4	1	$\frac{1}{8}$ x 1-3 $\frac{1}{2}$ x 3-9 $\frac{1}{2}$ " "	"	"	" "
5	1	2" x 2" x $\frac{1}{4}$ " ANGLE BAR	"	160565	WELD TO ITEM 1.
6	1	2" x 2" x $\frac{1}{4}$ " " "	"	"	" " " "
7	1	1" x $\frac{1}{8}$ x $\frac{1}{8}$ " " (MAKE FROM 1" x $\frac{1}{8}$ ANGLE)	"	"	" " " "
8	4	2" x 2" x $\frac{1}{4}$ " " "	"	"	" " " " 1 & 20
9	6	CABLE GLAND (MAKE FROM 1" BORE 2-2")	"	160596	SCREW & WELD IN ITEM 1.
10	43	$\frac{1}{2}$ x $\frac{1}{8}$ LG STUDS	"	"	" " " " 27, 29, 33
11	25	$\frac{3}{8}$ x $\frac{3}{4}$ LG SF BOLTS	"	160012	"
12	25	$\frac{3}{8}$ SF NUTS	"	160035	"
13	1	1" x 1" x $\frac{1}{8}$ " ANGLE BAR	"	160565	WELD TO ITEM 2
14	1	2" x 2" x $\frac{1}{4}$ " " "	"	"	" " " " 4
15	2	1" x 1" x $\frac{1}{8}$ " " "	"	"	" " " " 4
16	1	2" x 2" x $\frac{1}{4}$ " " "	"	"	" " " " 3
17	1	$\frac{1}{8}$ x 1-4 $\frac{1}{2}$ x 4-0" LG. PLATE.	"	160216	STOCK FS
18	1	1" x 1" x $\frac{1}{8}$ " ANGLE BAR	"	160565	WELD TO ITEM 17
19	2	1" x 1" x $\frac{1}{8}$ " " "	"	"	" " " " 17 & 29
20	2	2" x $\frac{1}{4}$ " FLAT BAR (MAKE FROM 2" x $\frac{1}{2}$ x 3-9 LG)	"	160278	" " " " 21, 22, 31 & 32
21	1	2" x 2" x $\frac{1}{4}$ " ANGLE BAR	"	160565	" " " " 17
22	1	2" x 2" x $\frac{1}{4}$ " " "	"	"	" " " " 17
23	1	$\frac{1}{8}$ x 2-1 $\frac{1}{2}$ x 4-0" LG. PLATE	"	160216	STOCK FS
24	1	1" x 1" x $\frac{1}{8}$ " ANGLE BAR	"	160565	WELD TO ITEM 23
25	2	1" x 1" x $\frac{1}{8}$ " " "	"	"	" " " " 23 & 35
26	2	1" x 1" x $\frac{1}{8}$ " " "	"	"	" " " " 27 & 33
27	1	$\frac{1}{8}$ x 1-3 $\frac{1}{2}$ x 4-0" PLATE.	"	160216	STOCK FS
28	1	2" x 2" x $\frac{1}{4}$ " ANGLE BAR	"	160565	WELD TO ITEM 27
29	1	$\frac{1}{8}$ x 1-4 $\frac{1}{2}$ x 4-0 $\frac{1}{2}$ PLATE.	"	160216	STOCK FS
30	1	1" x 1" x $\frac{1}{8}$ " ANGLE BAR	"	160565	WELD TO ITEM 29
31	1	2" x 2" x $\frac{1}{4}$ " " "	"	"	" " " " 29
32	1	2" x 2" x $\frac{1}{4}$ " " "	"	"	" " " " 29
33	1	$\frac{1}{8}$ x 1-3 $\frac{1}{2}$ x 4-0 $\frac{1}{2}$ LG. PLATE.	"	160216	STOCK FS
34	1	2" x 2" x $\frac{1}{4}$ " ANGLE BAR	"	160565	WELD TO ITEM 33
35	1	$\frac{1}{8}$ x 2-1 $\frac{1}{2}$ x 3-0 $\frac{1}{2}$ LG. PLATE	"	160216	STOCK FS
36	1	$\frac{1}{8}$ x 1-4 $\frac{1}{2}$ x 2-2 $\frac{3}{4}$ LG " "	"	"	" " " "
37	4	2" x 2" x $\frac{1}{4}$ " ANGLE BAR	"	160565	TO BE WELDED IN POSITION ON SITE
38	1	2" x $\frac{1}{4}$ " SUPPORT (MAKE FROM 2" x $\frac{1}{2}$ x 1-0 FLAT BAR)	"	160278	" " BOLTED TO ITEM 31
39	4	2 $\frac{1}{2}$ x 2 $\frac{1}{2}$ x $\frac{1}{4}$ " ANGLE BAR	"	160565	" " " " 5, 31 & 34
40	8	$\frac{5}{8}$ DIA x $\frac{1}{2}$ LG SF. BOLTS	"	160012	FOR ITEM 8 & 37
41	10	$\frac{5}{8}$ " x $\frac{1}{2}$ " " " "	"	"	" " " 39 & 38
42	4	$\frac{5}{8}$ " x $\frac{1}{2}$ " " " "	"	"	" " " 36 & 34.
43	22	$\frac{5}{8}$ SF NUTS	"	160035	" " " 40, 41 & 42
44	8	$\frac{5}{8}$ SF LOCK-NUTS	"	160050	" " " 40.
45	43	$\frac{1}{2}$ SF. NUTS	"	160035	" " " 10.



A	DATE <u>7-7-33</u>	B	DATE <u>7-7-33</u>
	CHECKED <u>APB</u>		CHECKED <u>APB</u>
	DWG APP'D		DWG APP'D
	DESIGN APP'D		DESIGN APP'D

NOTE ON ITEM 3 READ 1/8"  
LESS.  
HQS. PAPER TRACING.

### DETAILS OF COPPER STRAP TROUGH FOR PROPULSION MOTOR.

15707/19

GO.15707.

COPIES TO:-  
TIN SHOP.