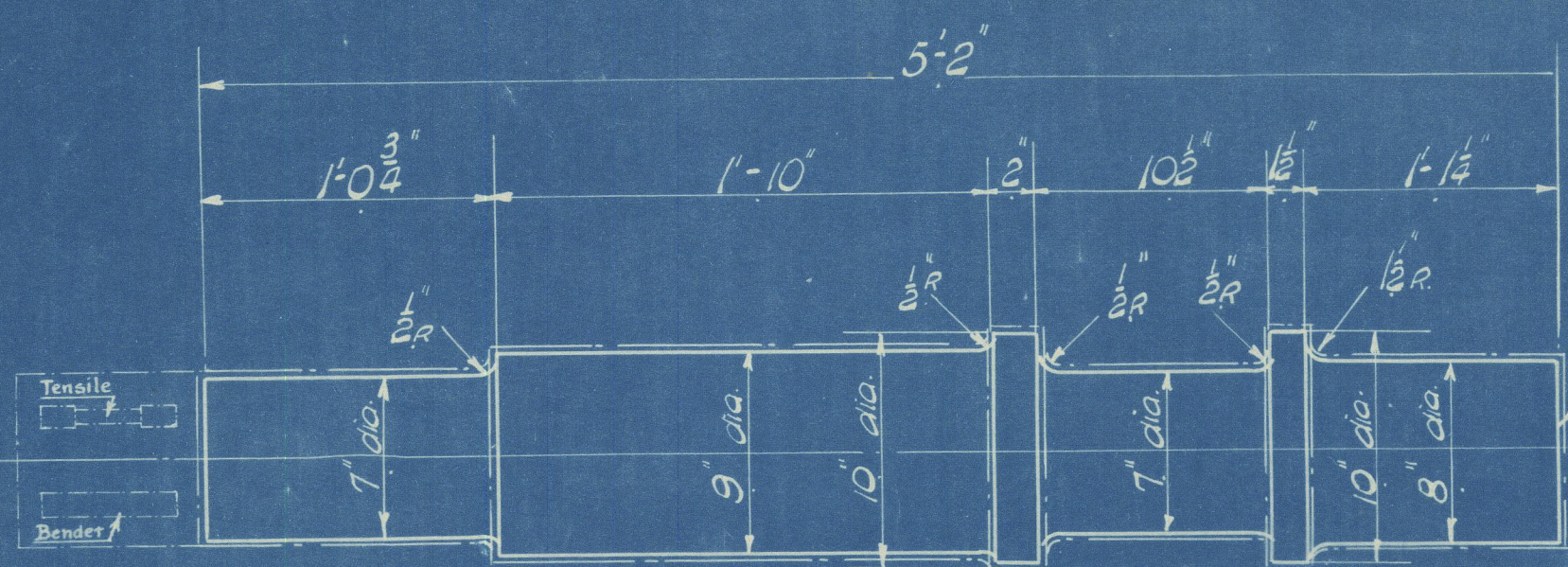
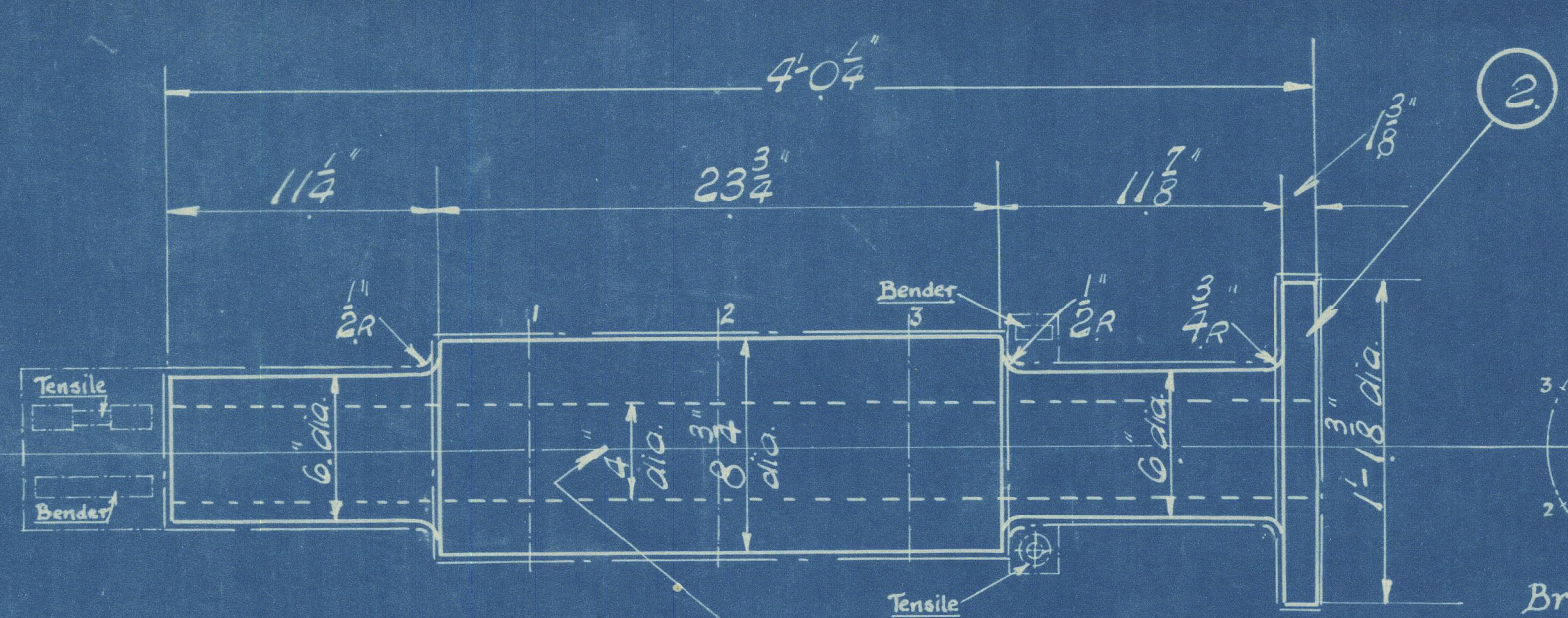


BILL OF MATERIAL.					
Item	Req.	Description.	Mat.	P.D. Spec.	Remarks.
1	1	R.M. Wheel Shaft Forging.	F.S.	1131	Machining Allowances
2	1	R.M. Pinion Forging.	F.S.	1020A	" " "
3	1	R.M. Wheel Rim Forging.	F.S.	1018A	" " "
4	1	R.M. Flexible Shaft Forging.	F.S.	1100	" " "
5	1	R.M. Coupling Claw Forging.	F.S.	1024	" " "
6	1	R.M. Coupling Sleeve Forging.	F.S.	1023	" " "

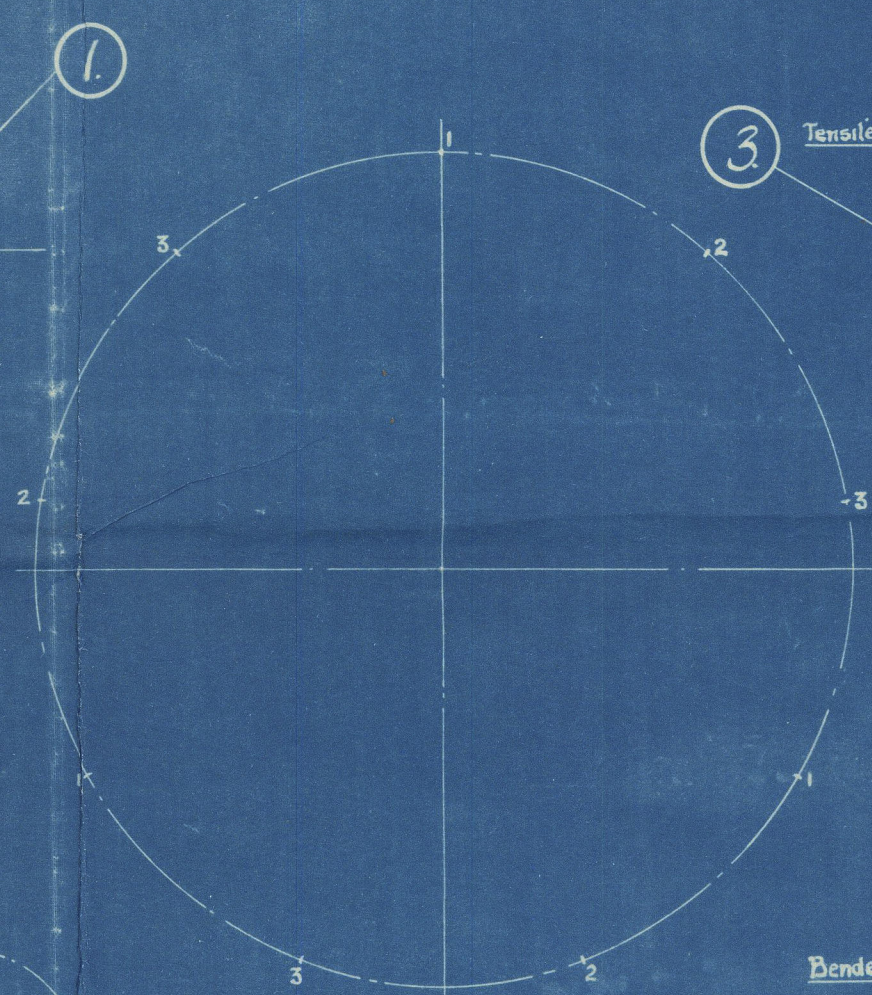


P.S. 1131. BEAMA Grade 2



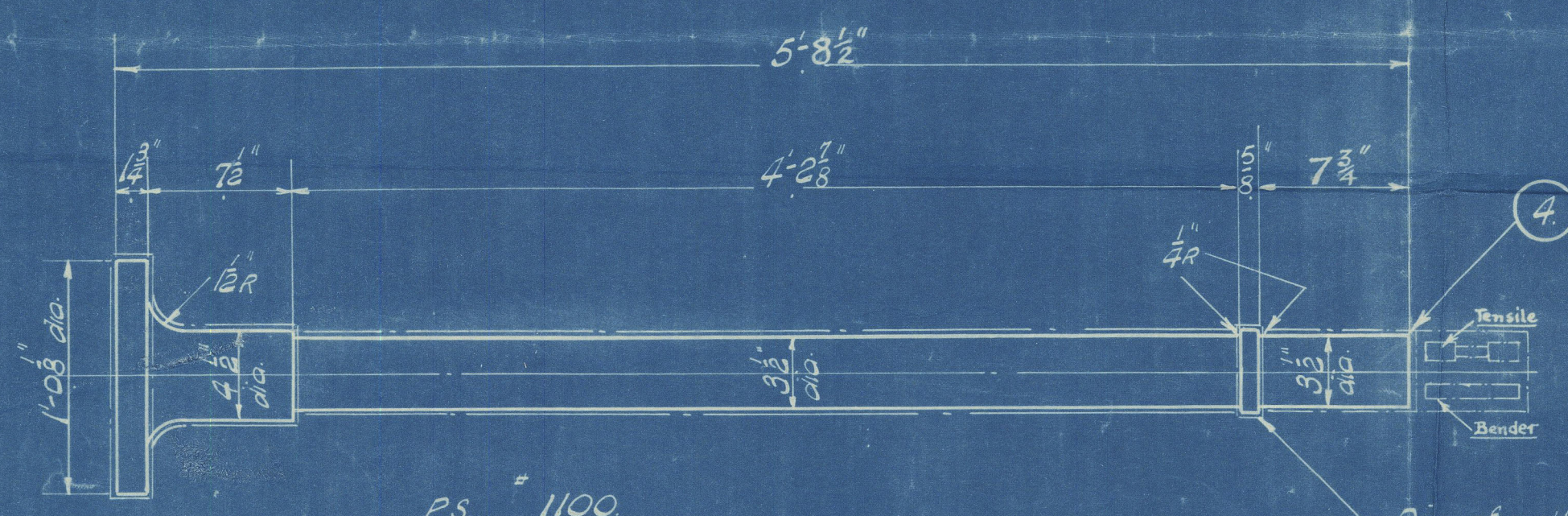
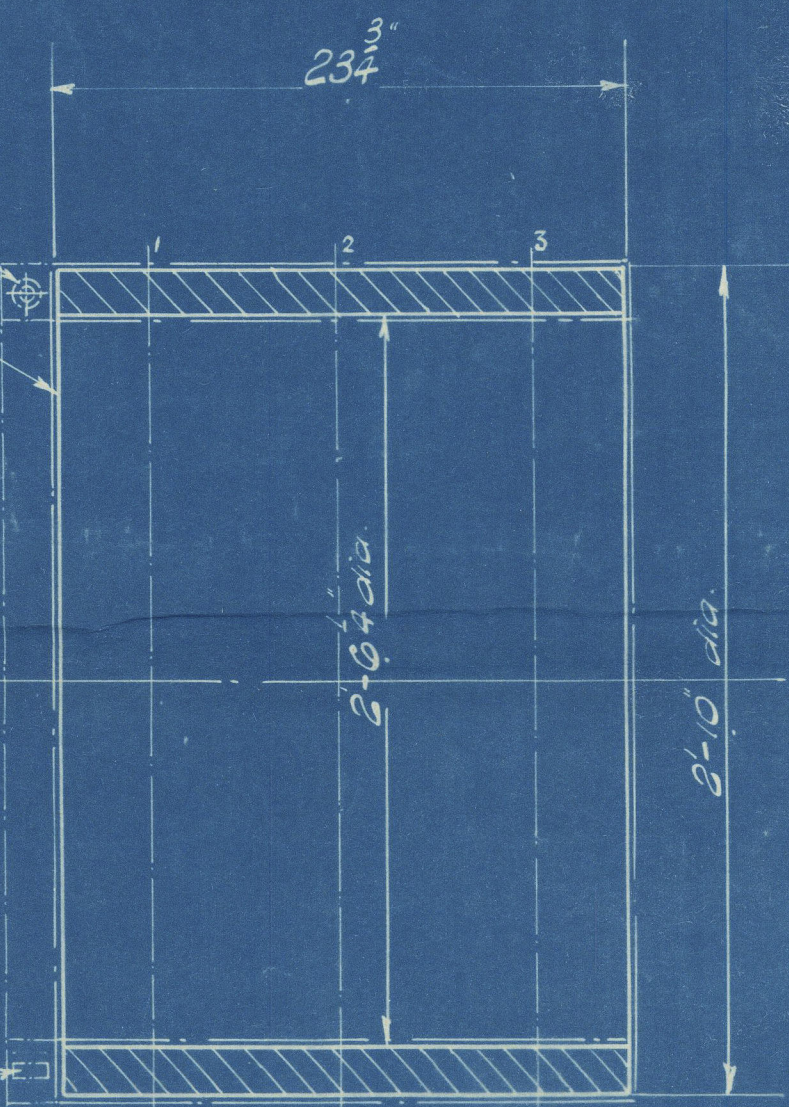
P.S. # 1020.A

See note "C"



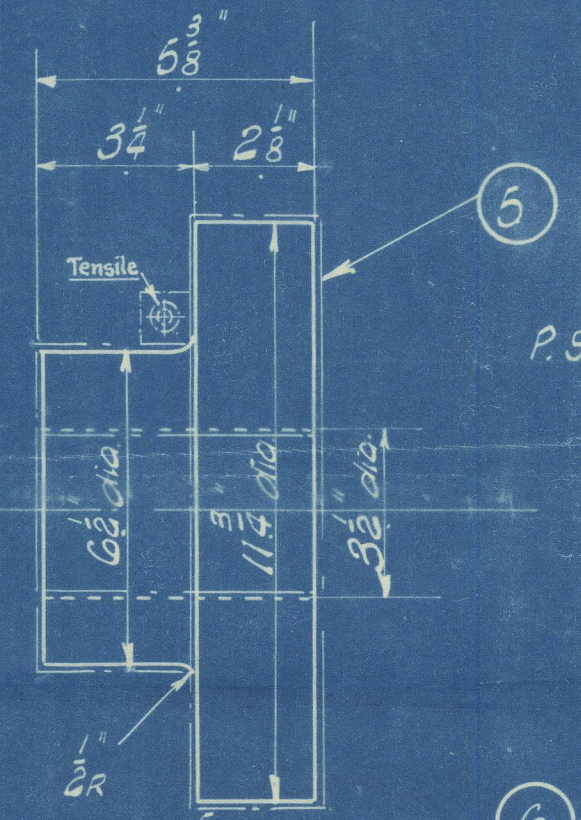
Brinell tests at these 9 points.

P.S. # 1018.A

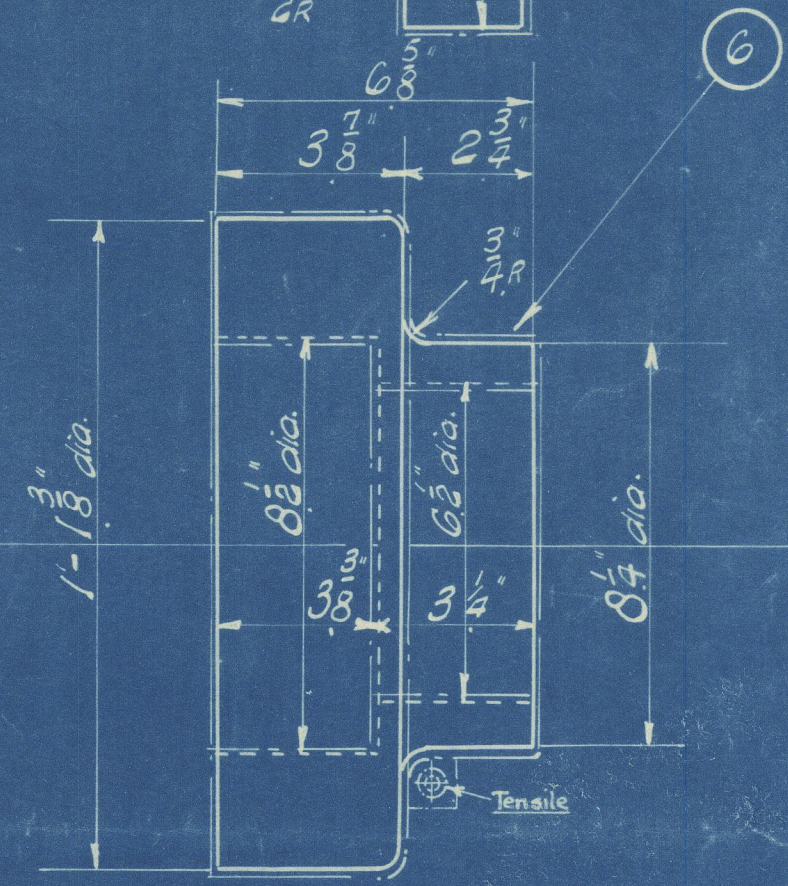


P.S. # 1100.

Dia of collar = 3 7/8"



P.S. 1024



P.S. # 1023.

Notes.

Finished sizes given; forgings to be rough machined to chain dotted lines leaving 1/8" on all surfaces for finish machining by M.V.E. Co. LTD. except bore of Item #2 (see note "C" below). For Material, Machining Allowances, Physical Tests etc. see Purchasing Specification as enumerated under each Item, except that Brinell tests on Items 2, 3, & material tests for Item #2 to be as shown.

Inspection.

Subject to Tests, Inspection and requirements of:-

- (1) LLOYDS' SURVEY.
- (2) BOARD OF TRADE
- (3) BRITISH CORPORATION.
- (4) -----

(C) Pinion bore to be finished and before shipping to these works, bore to be well greased and ends plugged with hard wood plugs to prevent corrosion.

SK. 800743.

1	Date 13-4-33 Checked: [Signature] Dwg. Appd. [Signature] Design Appd. [Signature]	2	Date 22-4-33 Checked: [Signature] Dwg. Appd. [Signature] Design Appd. [Signature]	Date Checked Dwg. Appd. Design Appd.
---	--	---	--	---

2 Dimensions changed on Item #4:-
5'-8 1/2" was 5'-7"
7 3/4" was 6 1/4"
Weight was 2-2-5.

Issued by Mech. DO
To:-
CEng. Details
Customer Purchase
Office Copy
Forge.

METROPOLITAN-VICKERS ELECTRICAL CO. LTD.
MANCHESTER, ENGLAND.

R.M. FORGINGS.
21" S.R. GEAR.

Scale = 3 1/2" = 1 foot

SK. 800743.
W236-0086