

—BOILERS. N^o 926. 2^{OFF}.

WORKING PRESSURE 180 LBS PER SQ INCH TEST PRESSURE 360 LBS PER SQ INCH TO LLOYD'S REQUIREMENTS.

ALL PLATES, RIVETS & STAYS OF STEEL LAP WELDED IRON TUBES.

ALL HOLES TO BE DRILLED IN POSITION.

TENSILE STRENGTH OF SHELL PLATES & BUTTSTRAPS TO BE NOT LESS THAN 28 ³/₄ & NOT MORE THAN 32 TONS PER SQ INCH.

OTHER	26	20 ¹ / ₂
GIRDER & LONGITUDINAL STAYS	28	32
RIVETS & SCREW STAYS	26	30

THE ELONGATION OF SHELL PLATES, BUTTSTRAPS, GIRDERS & LONGITUDINAL STAYS TO BE NOT LESS THAN 20% IN A LENGTH OF 8 INCHES.

OTHER	25%	STAYS DIA OF TEST PIECE
SCREW STAYS	25%	
RIVETS	25%	

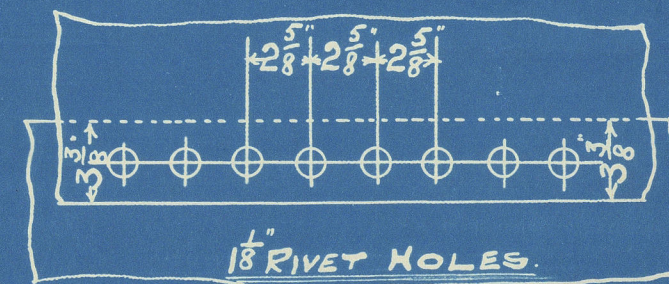
SCALE, 1" = 1 FOOT.

15. 12. 1909.

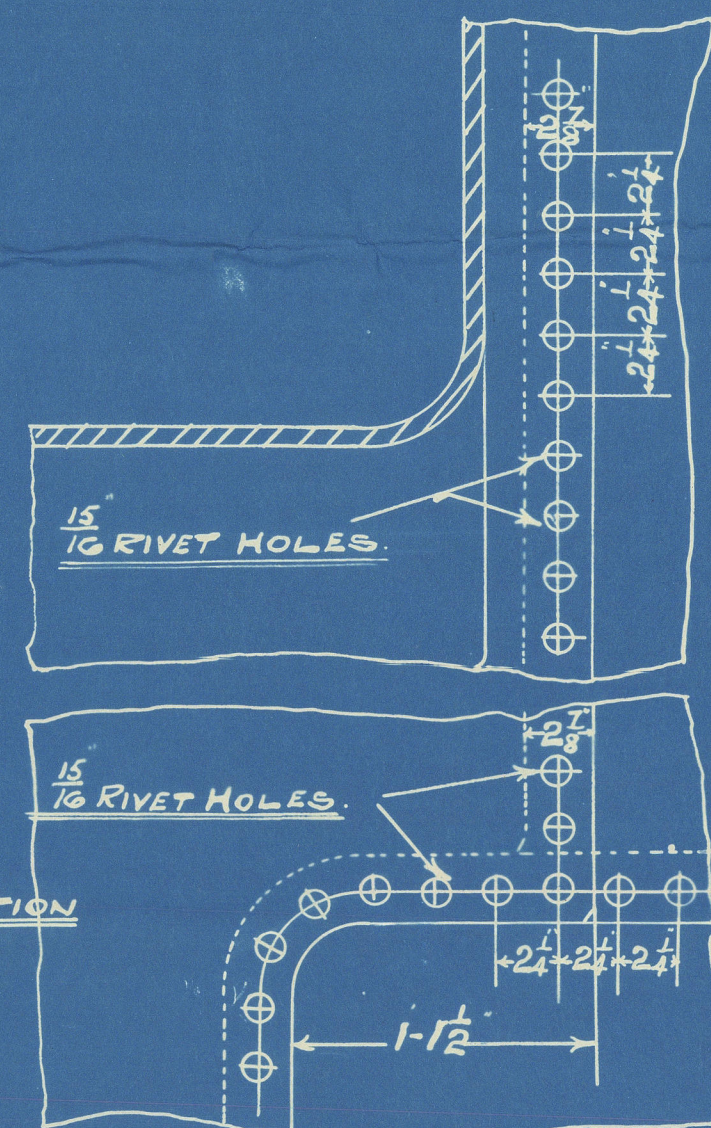
MESSRS WOOD SHINER & COY LTD
S. S. N^o 163

GEORGE CLARK, LIMP.
SOUTHWICK ENGINE WORKS
SUNDERLAND.

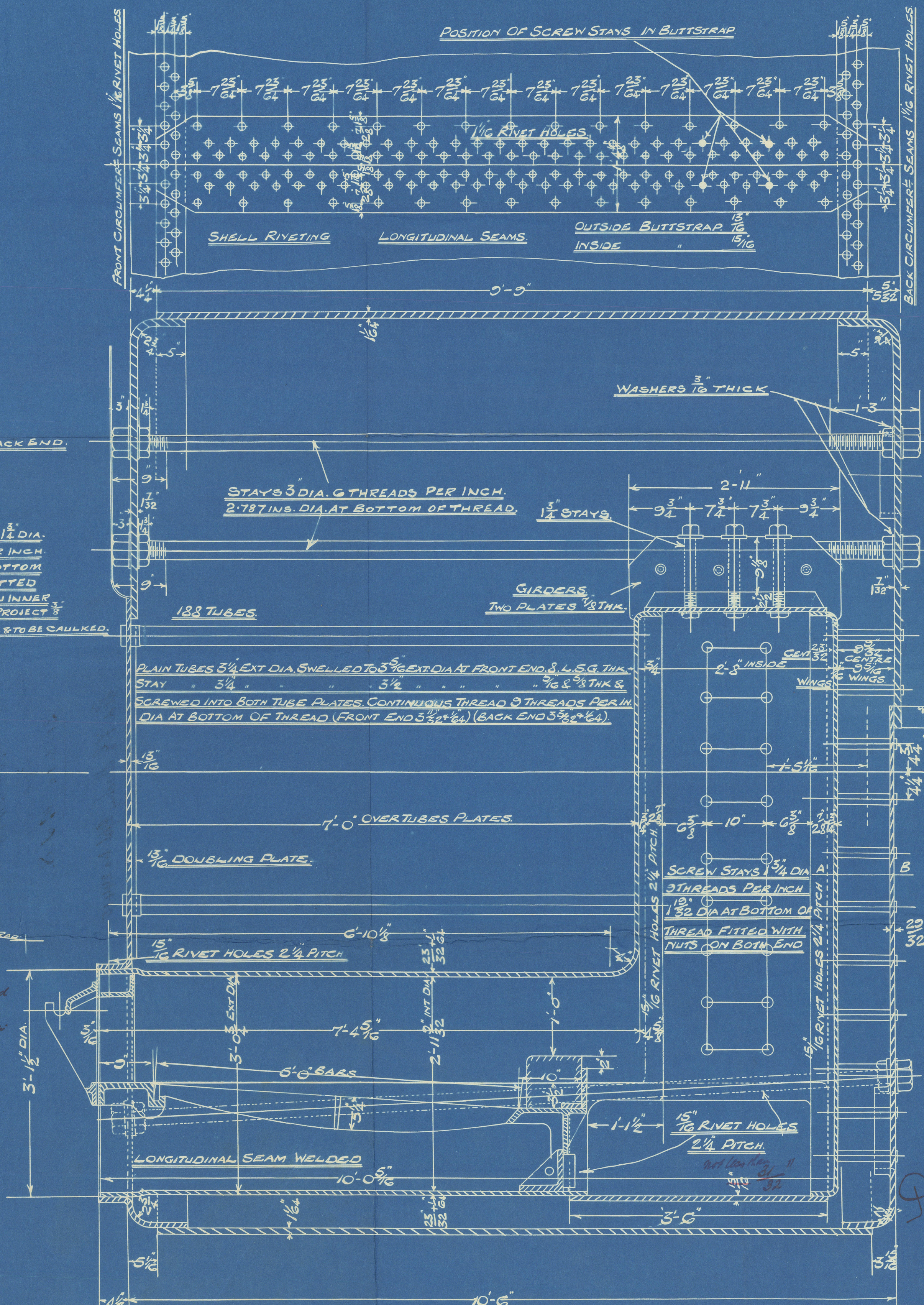
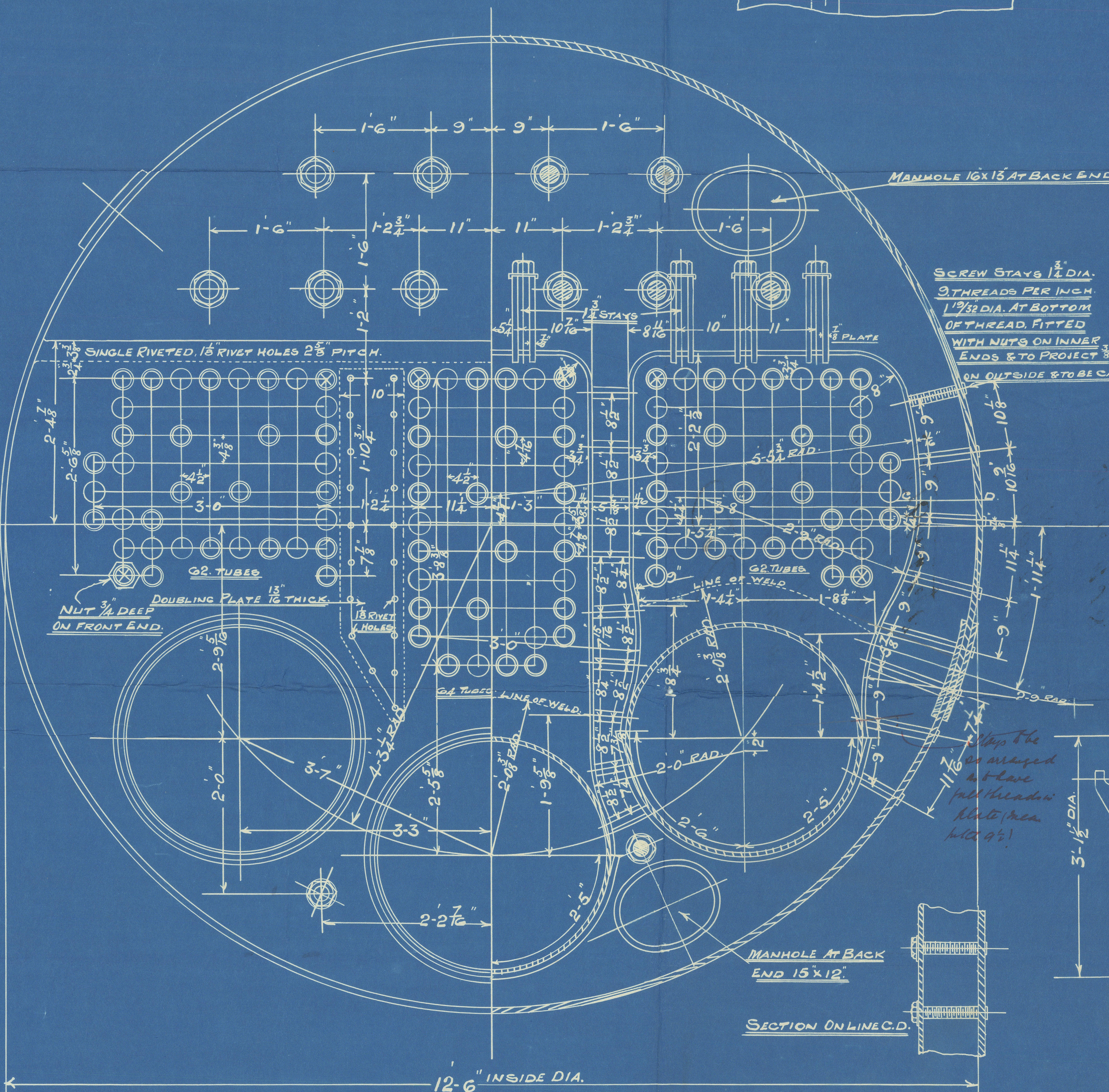
HEATING SURFACE	SQ. FT.
SURFACE ON ONE TUBE - 5'851	-
" 188 TUBES	1100.
THREE FIRE BOXES	161.4
THREE FURNACES	99.
BACK TUBE PLATE	27.6
FRONT TUBE PLATE	24.
TOTAL IN ONE BOILER	1412.
TOTAL IN TWO BOILERS	2824.
TOTAL GRATE SURFACE	88.2
AREA THRO. TUBES	16.483
RATIO. AREA THRO. TUBES THE GRATE SURFACE	1867
STEAM SPACE TO GINCHES ABOVE THE TUBES. (TOTAL)	629.16 CF.



FRONT & BACK CROSS SEAMS.
SCALE, 1 1/2" = 1 FOOT.



FURNACE & COMBUSTION
CHAMBER RIVETING.
SCALE, 1 1/2" = 1 FOOT.

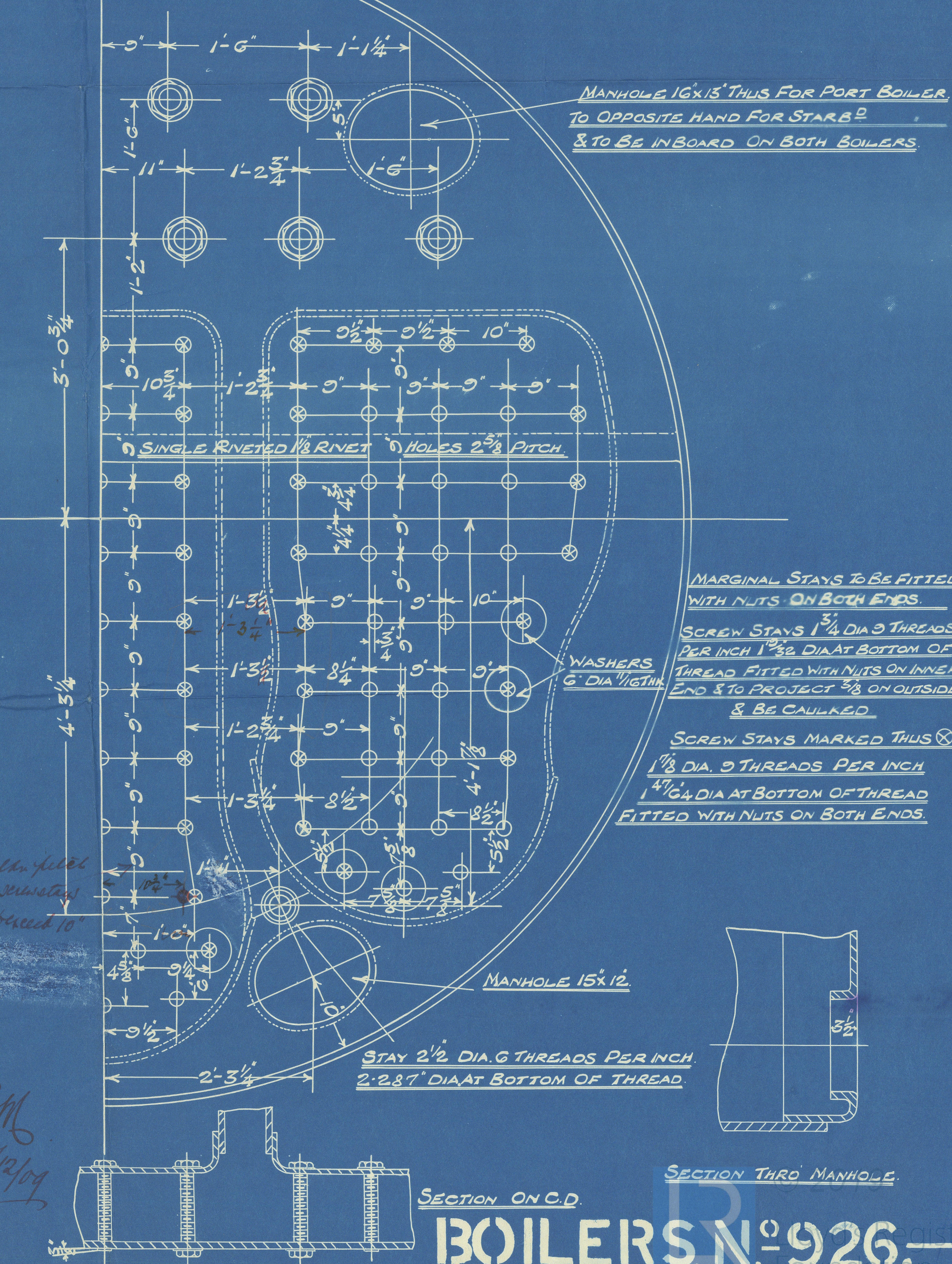


250 PLAIN TUBES 7'-0 1/2" LONG 5 1/4" EXT DIA SWELLED TO 5 3/4" EXT DIA FOR 3' IN LENGTH NO 8 LSG THICK
114 STAY 7'-0 5/4" 5 1/4" 3 1/2" 3' 5/16" THICK
8 7'-0 5/4" 5 1/4" 3 1/2" 5' 3/8"
4 7'-1" 3 1/4" 5 1/2" 5' 3/8" WITH NUT 5/4" DEEP ON SWELLED END
ALL STAY TUBES SCREWED FOR 3' IN LENGTH AT BOTH ENDS CONTINUOUS THREAD 9 THREADS PER INCH

MAIN STAYS
20 BARS 5" DIA 11'-1 1/2" LONG
4 2 1/2" 11'-0 1/2"

SCREW STAYS
50 BARS 1 1/2" DIA 12'-0" LONG
10 1 1/2" 12'-0"

GIRDER STAYS
NO OFF DIA LENGTH
48 1 3/4" 1'-4"



W233-0174

SECTION ON C.D.
BOILERS. N^o 926.

926

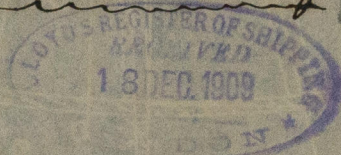
G. CLARK M. BOILERS

2 OFF 180 LBS
FOR

WOOD SKINNER & CO. L.P.

S. S. 163.

S. L. Blackloft



LOYD'S TEST

No. 2818

360 LBS.

31.3.10 F. J. S.

Std F. E. Machy Rpt No 24415

W233-0174



© 2019

Lloyd's Register
Foundation

E. J. S.
17.12.09