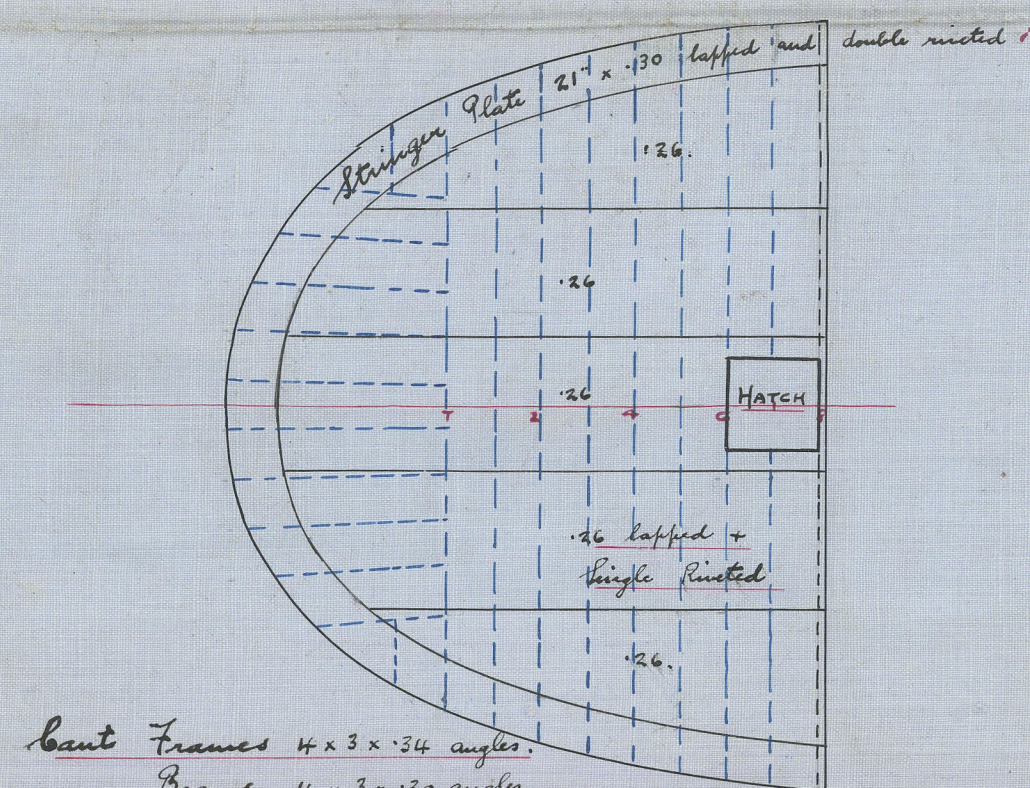


# PROPOSED DECK PLANS OF A STEEL SCREW STEAMER

TO CLASS 100 A.1. AT LLOYDS

PRINCIPAL DIMENSIONS 225'-0" x 36'-0" x 16'-4" MLD

8.11.09.  
14.12.09. POOP DECK

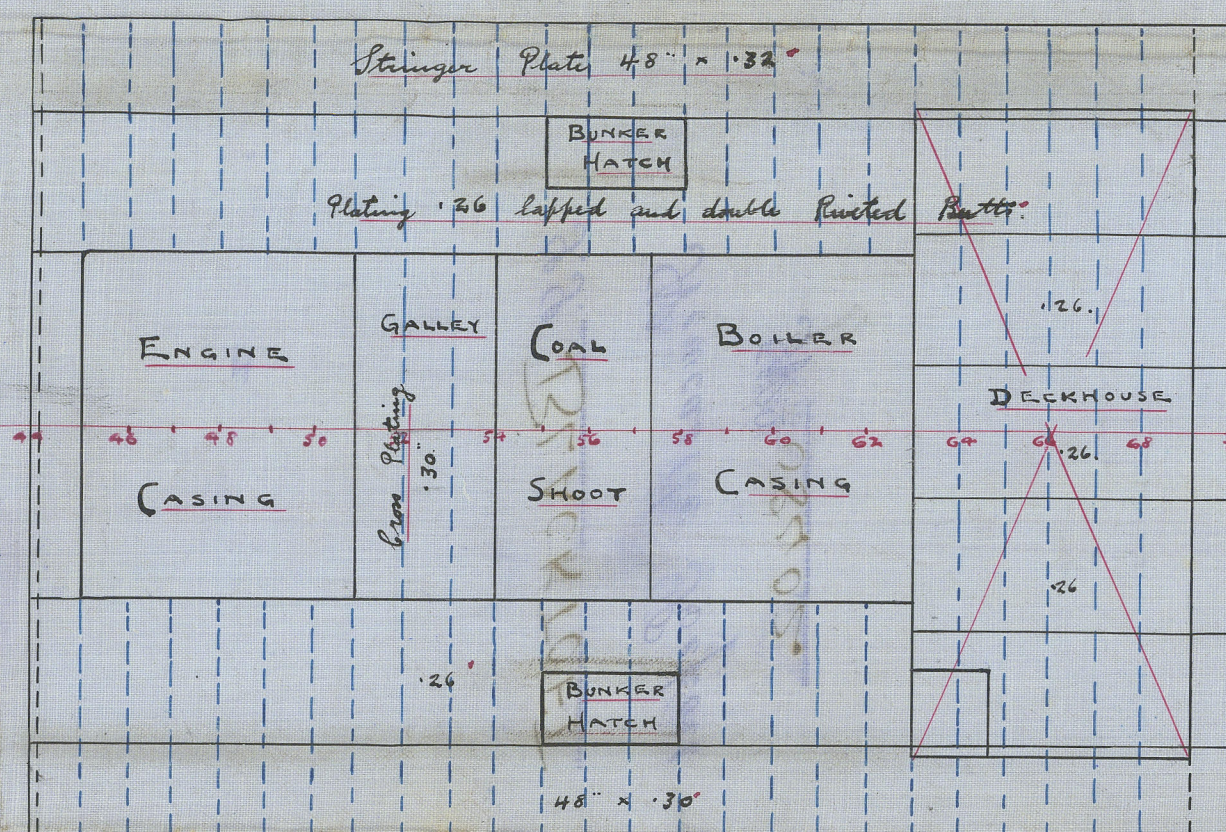


## PARTICULARS OF HATCHWAYS

SIDE COAMING PLATES .44  
END " " .40  
WEBS  
THICKNESS .40  
DEPTH 24" AT CENTRE, 18" AT ENDS  
STIFFENERS 4 x 3 x 40 DOUBLE ANGLES.

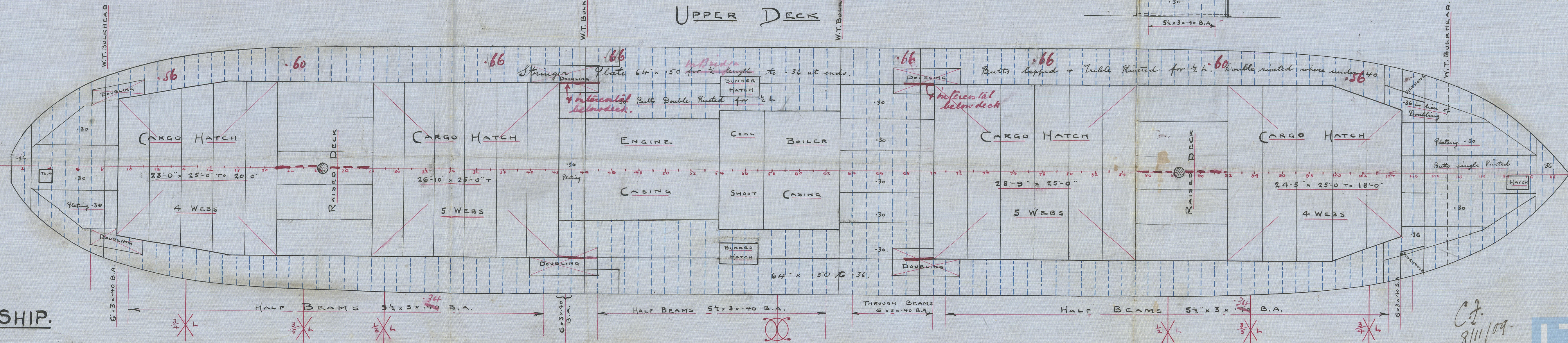
WOOD SKINNER & CO LTD  
SHIPBUILDERS  
NEWCASTLE ON TYNE

## BRIDGE DECK



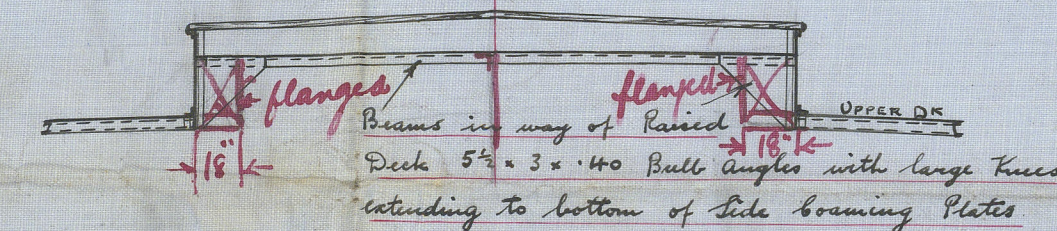
SCALE 1/8" = ONE FOOT

## UPPER DECK

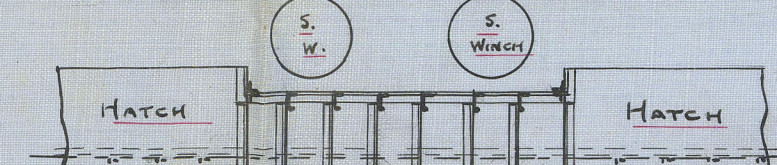


No 163 SHIP.

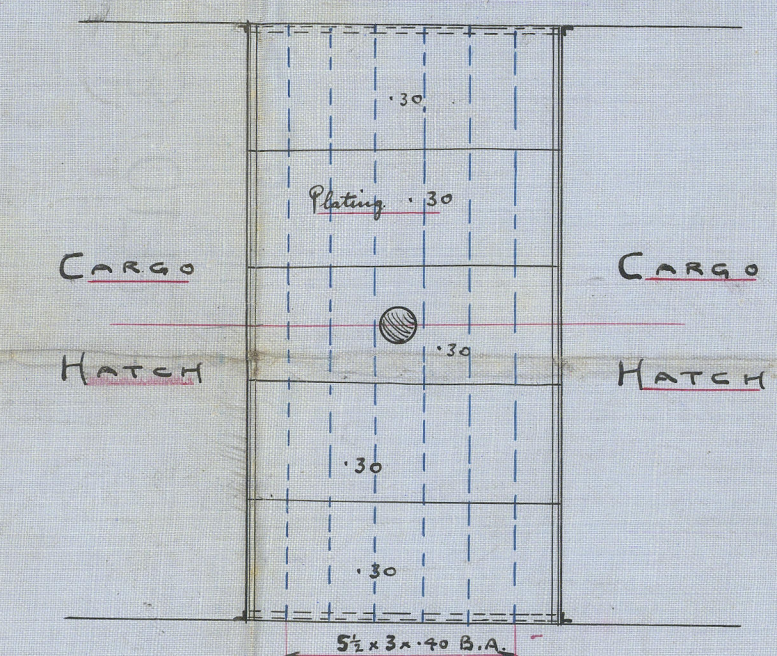
## SECTION IN WAY OF RAISED DECK



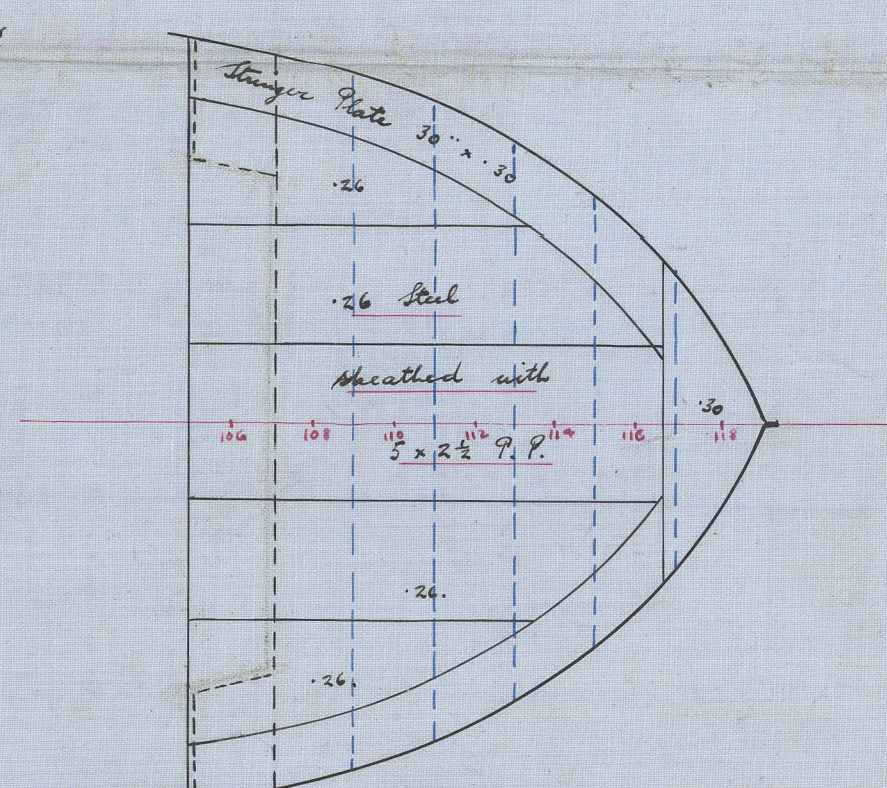
## ELEVATION OF RAISED DECK



## PLAN OF RAISED DECK



## FORECASTLE DECK



Ct.  
8/11/09.



Wood Skinner & Co.  
P.S. No 63  
Deck plan.

J.P. BLACKTOFT

Newcastle Report

SP 08402



© 2019

Lloyd's Register  
Foundation