

S. S. "DIRECTOR" MIDSHIP SECTION.

SCALE $\frac{1}{2}$ " = 1 FOOT.

TO CLASS 100 AT LLOYD'S TWO DECK.

DIMENSIONS: 395'6" x 52'3 1/2" x 30'6" MOULDED.

NUMERALS:
B. = 52.29
D. = 20.50
82.79 = TRANSVERSE N°
394.90
32694 = LONGITUDINAL N°
PROPORTIONS:
DEPTH TO UPPER DECK = 12.94
" " BRIDGE DECK = 10.26

BRIDGE DECK PLATING: 33' x 42' AT SIDES OF OPENINGS ON ONE STRAKE.
POOP: 2' x 34' TIES. SHEATHED 5' x 5' P.P.
FLOOR DECK PLATING: 34'

BRIDGE DECK STIFFENERS: 54' x 54'
POOP: 35' x 34'
FLOOR: 35' x 34'
BRIDGE: 5' x 5' x 54'
POOP FLOOR: 35' x 34'

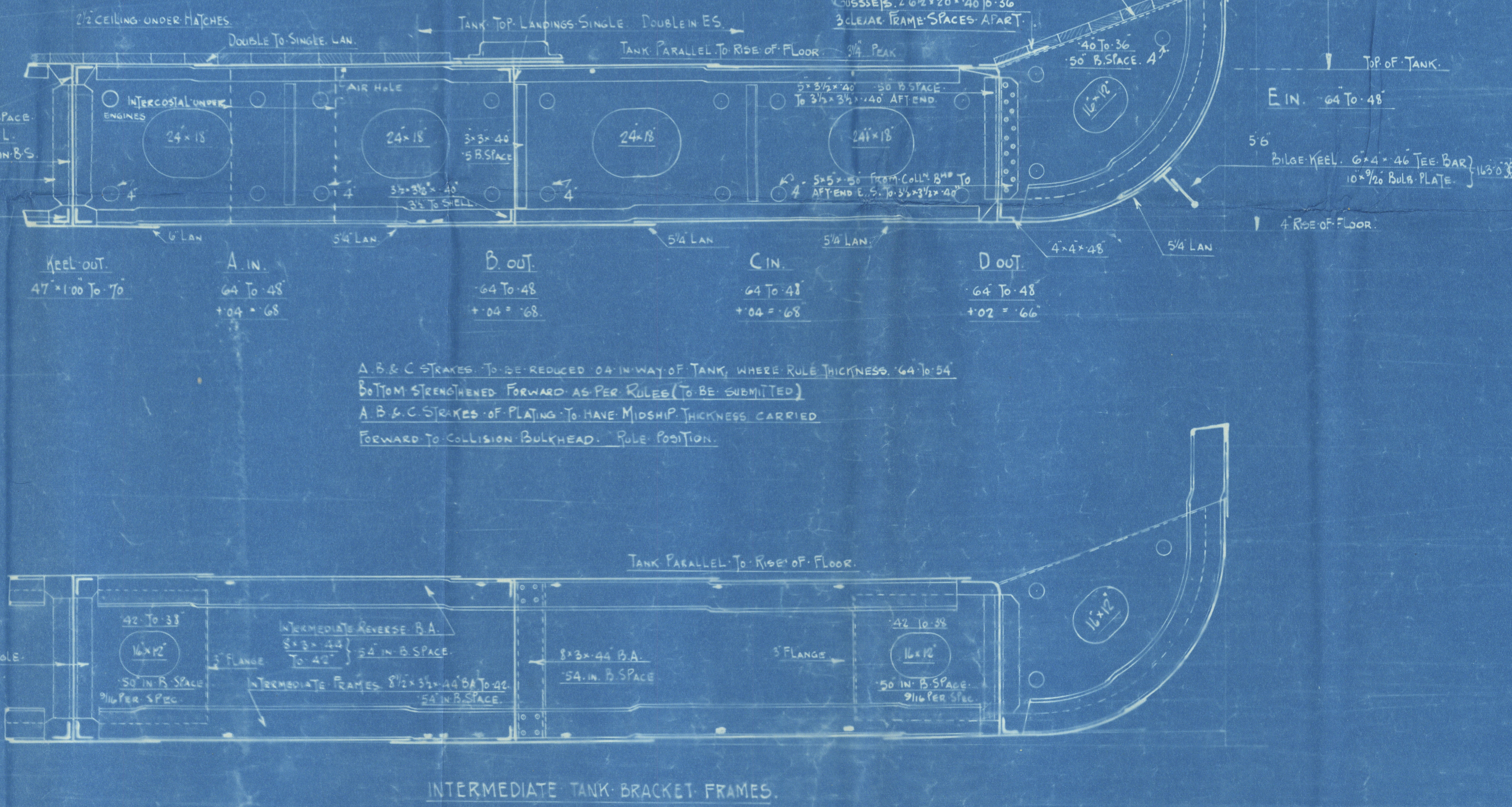
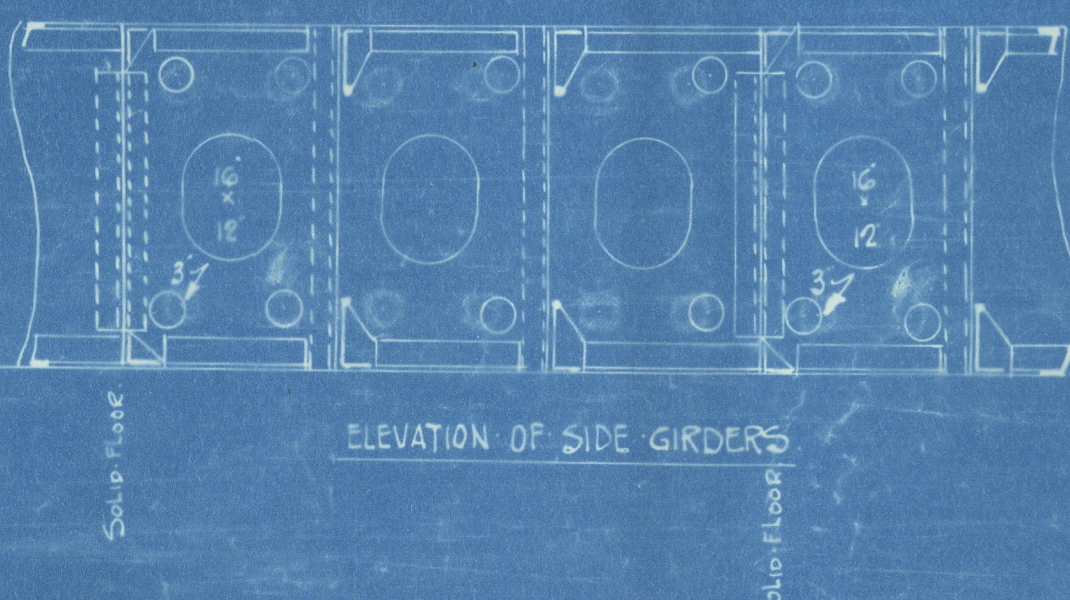
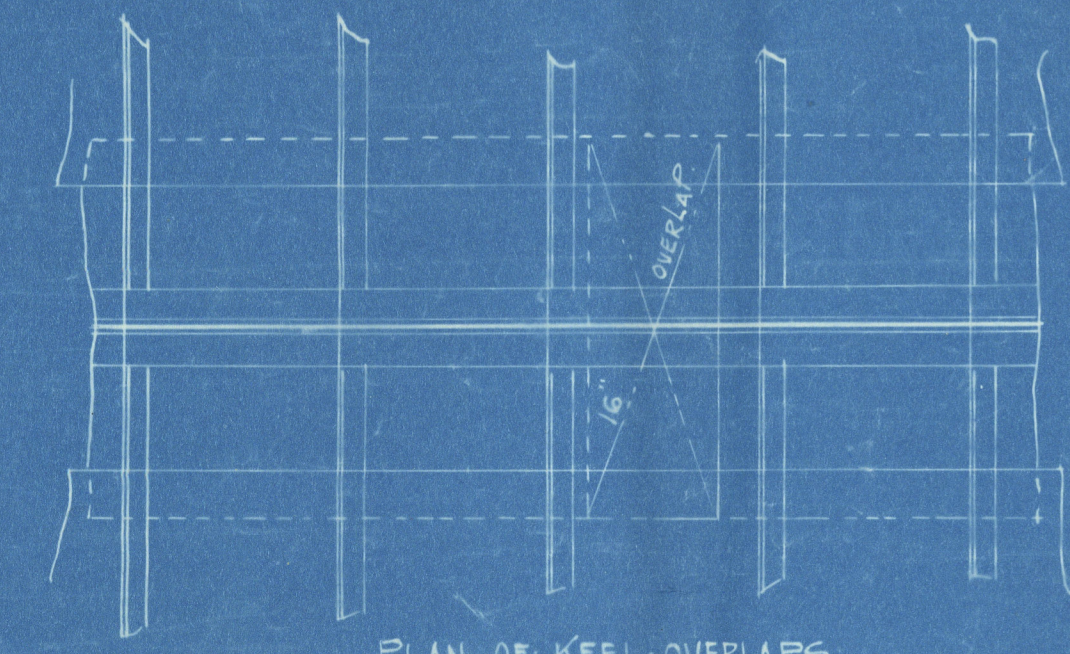
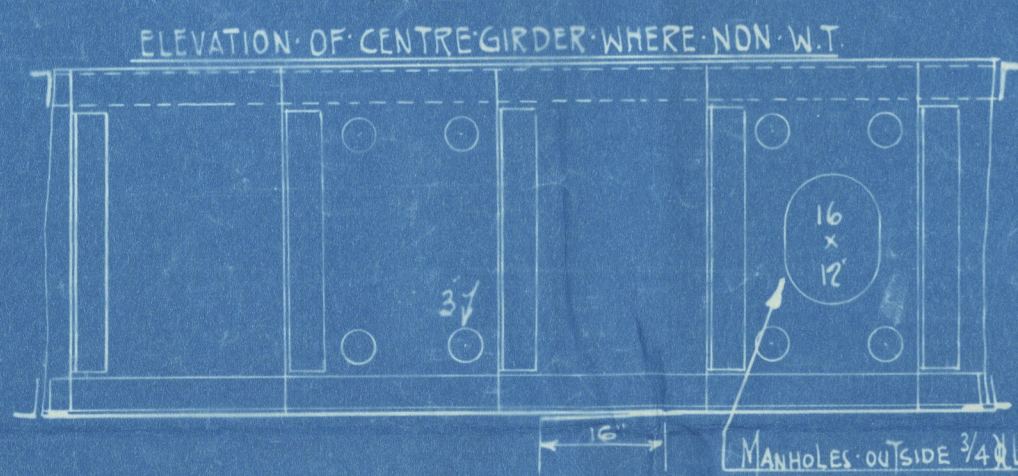
EQUIPMENT NUMBER.	
52.29 x 30.5 x 304.9	= 226.94
POOP	37
BRIDGE	128.25
FORECASTLE	40.5
HOUSES	56.5 x 75 x 5
CABINS	46.5 x 75 x 5
WINDHOUSES	33.25 x 7.5 x 75
	344.90 = 30.

EQUIPMENT.	
3 BOWER ANCHORS	56 1/2 CWT. STOCKLESS.
1 STREAM ANCHOR	15 1/4 " EX. STOCK
270 FATHOMS	2 1/2 " SLID. CHAIN CABLE.
30 "	4 1/4 " STEEL WIRE STREAM.
120 "	" " TAILLINE
2 @ 90 FATHOMS	2 1/2 " " " HAWSE
1 @ 30 "	2 1/2 " " " WARP
1 @ 90 "	7 " MANILLA WARP.

FRAMES: 10' x 1/2" x 42' B.A. SPACED 24" APART TO 200' & UPPER DECK ALTERNATELY 104' x 10' x 1/2" x 42'
" 6' x 3/2" x 40' ALTERNATE FRAMES BETWEEN 200' & UPPER DECK SCARFED 18' CLEAR OF BRIDGE & FLOOR.
" 7' x 3/2" x 41' B.A. ON ALTERNATE FRAMES BETWEEN 200' & BRIDGE DECK SCARFED 18'
" 6' x 3/2" x 38' IN AFT PEAK SPACED 24" APART ALL TO POOP DECK
" 7' x 3/2" x 44' B.A. IN FORE PEAK SPACED 24" APART ALL TO FORECASTLE DECK
" 7' x 3/2" x 44' B.A. BETWEEN 200' & FLOOR DECK ABAFT PEAK 18' ON ALT. FRG. SCARFED 18'
INTERMEDIATE FRAMES: BETWEEN UPPER & FLOOR DECK 6' x 3/2" x 40' SCARFED 18' ABAFT PEAK 18'
REV. FRAMES: 3 1/2' x 38' IN AFT PEAK 6' GIRDER TO UPPER DECK
STEM: 10' x 2 1/4' STEEL FOOT: 10' x 1 1/2' B. 9' x 1 1/2'

TANK SCANTLINGS:
CENTRE STRAKE: 7/16" x 50 TO 40' 50" IN B. SPACE (7/16" PER 5" SEC)
TOP PLATING: 40 TO 36' x 32' = 22 TO 38' 3/16" IN B. SPACE (7/16" PER 5" SEC)
" 28' IN E. SPACE 102' x 50' (7/16" PER 5" SEC) 1 UNDER ENGINES
FLOORS: 40 TO 36' 50" IN B. SPACE (1/4" PER 5" SEC = 5/16") 48' IN E.S. ALL FLOORS STIFFENED
SOLID FLOORS ON EVERY 2" FRAME, UNDER ENGINES, & FORM OF 3/16" UNDER B. BEARERS & 5/16" & THRU
INTERCOSTAL: 40 TO 36' x 42' x 38' 50" IN B. SPACE (1/4" PER 5" SEC) 56' 48' IN E.S.
MARGIN PLATE: 43' x 48' 1/16" IN E. & B. SPACE PER 5" SEC. RULE 34 TO 23 AFT.
FRAMES: 4' x 3/2" x 40' DOUBLED FORM OF 3/16" 4 FLANGE VERTICAL
REV. FRAMES: 4' x 3' x 40' B. SPACE 4' x 3/2" x 50' (1/4" PER 5" SEC) = 56' DOUBLE UNDER B. BEARERS. REV. FRG. IN HOLDS AT W.T. DVS. & 13' x 3' x 40' 4 FLANGE VERTICAL
" IN E.S. 4' x 3/2" x 50' DOUBLE FORM OF 3/16" EACH SIDE OF CS UNDER THRU 4' x 3/2" x 48' DOUBLE JOINT INTERCOSTAL.
VERTICAL STIFFENING ANGLES: 3' x 3' x 40' 50" IN B. SPACE 48' IN E.S.
CRACKS OUTSIDE MARGIN: 40 TO 36' 50" IN B. SPACE
INTERCOSTAL SHELL ANGLE: 3' x 3' x 40' JOINT ANGLE: 3' x 3' x 42' HOLDS: 3 1/2' x 3/2" x 56' B.S.
" JOINT ANGLE: 4' x 3' x 1/2" DOUBLE UNDER ENGINE SEAT.
" 3 1/2' x 3' x 1/2" SINGLE CLEAR OF
" VERTICAL: 3' x 3' x 40' HOLD: SINGLE
" B.S. 3 1/2' x 3' x 50'
" E.S. & THRU: 3 1/2' x 3' x 48' SINGLE.

RIVETING:
SHELL PLATE BUTTS: OVERLAPPED & QUADRUPLE RIVETED TO TREBLE WHERE NOT EXCEEDING 76"
SHELL BUTTS FROM YEE TO UPPER TURN OF BILGE OVERLAPPED AND:
QUADRUPLE RIVETED FOR 1/2 L. WHERE THICKNESS OVER 60" (WITHOUT ADDITIONS).
SHELL BUTTS FROM UPPER TURN OF BILGE TO STRAKE BELOW:
SHEER STRAKE OVERLAPPED & TREBLE RIVETED.
TWO RIVETS THRU FRAME JOGGLE AT LANDINGS.



A, B & C STRAKES TO BE REDUCED 0.4" IN WAY OF TANK, WHERE RULE THICKNESS 64 TO 64
BOTTOM STRENGTHENED FORWARD AS PER RULES (TO BE SUBMITTED)
A, B & C STRAKES OF PLATING TO HAVE MIDSHIP THICKNESS CARRIED
FORWARD TO COLLISION BULKHEAD. RULE POSITION.

M. OUT: BRIDGE SHEER STRAKE LAPPED AND QUADRUPLE RIVETED.

L. IN: BRIDGE 62' POOP 38' FLOOR 40' BULKHEAD 720

G. LAN TO 8 1/4" IN BRIDGE SINGLE AT POOP & FLOOR
88' 44' 62' IN BRIDGE DOUBLER AT BRIDGE ENDS TO BUTTS LAPPED & QUADRUPLE RIVETED FOR 1/2 L. OUTSIDE BRIDGE.

6" LAN 5 1/4" INSIDE OF BRIDGE.

J. IN: 70' TO 44' + 02' = 72' 62' IN BRIDGE + 02' = 64' BUTTS LAPPED & QUADRUPLE RIVETED FOR 1/2 L. OUTSIDE BRIDGE.

6" LAN 5 1/4" INSIDE OF BRIDGE.

H. OUT: 62' TO 44' + 02' = 64' 6" LAN 5 1/4" INSIDE OF BRIDGE.

5 1/4" LAN.

5 1/4" LAN.

5 1/4" LAN.

5 1/4" LAN.

5 1/4" LAN.

5 1/4" LAN.

5 1/4" LAN.

5 1/4" LAN.

5 1/4" LAN.

5 1/4" LAN.

5 1/4" LAN.

5 1/4" LAN.

5 1/4" LAN.

5 1/4" LAN.

5 1/4" LAN.

5 1/4" LAN.

5 1/4" LAN.

5 1/4" LAN.

5 1/4" LAN.

5 1/4" LAN.

5 1/4" LAN.

5 1/4" LAN.

5 1/4" LAN.

MIDSHIP SECTION (AS BUILT)

Director

GLASGOW REPORT No 45550



© 2019

W233-0153

Lloyd's Register