

2 OFF " 722.M

1990

31. March
1925

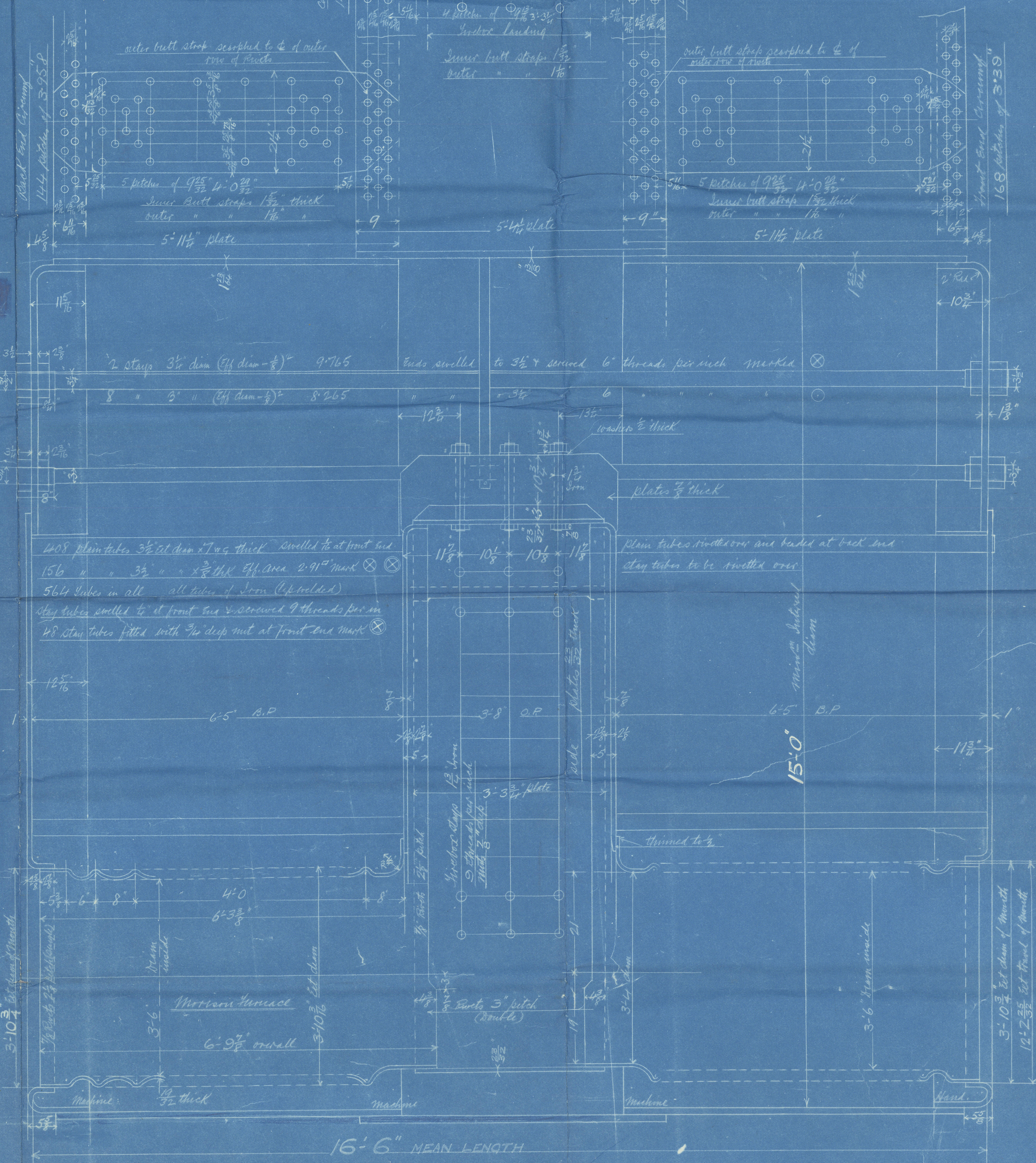
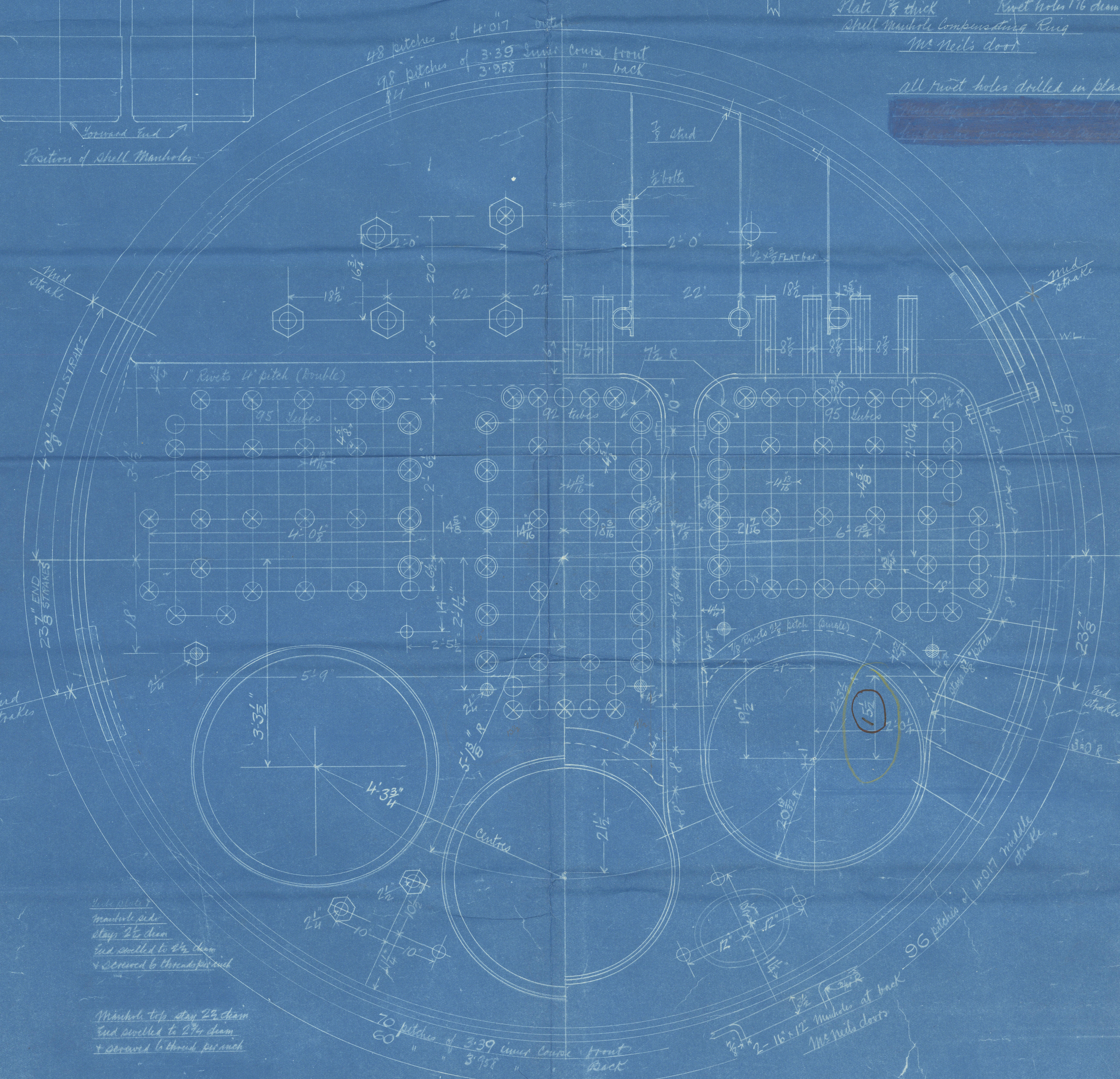
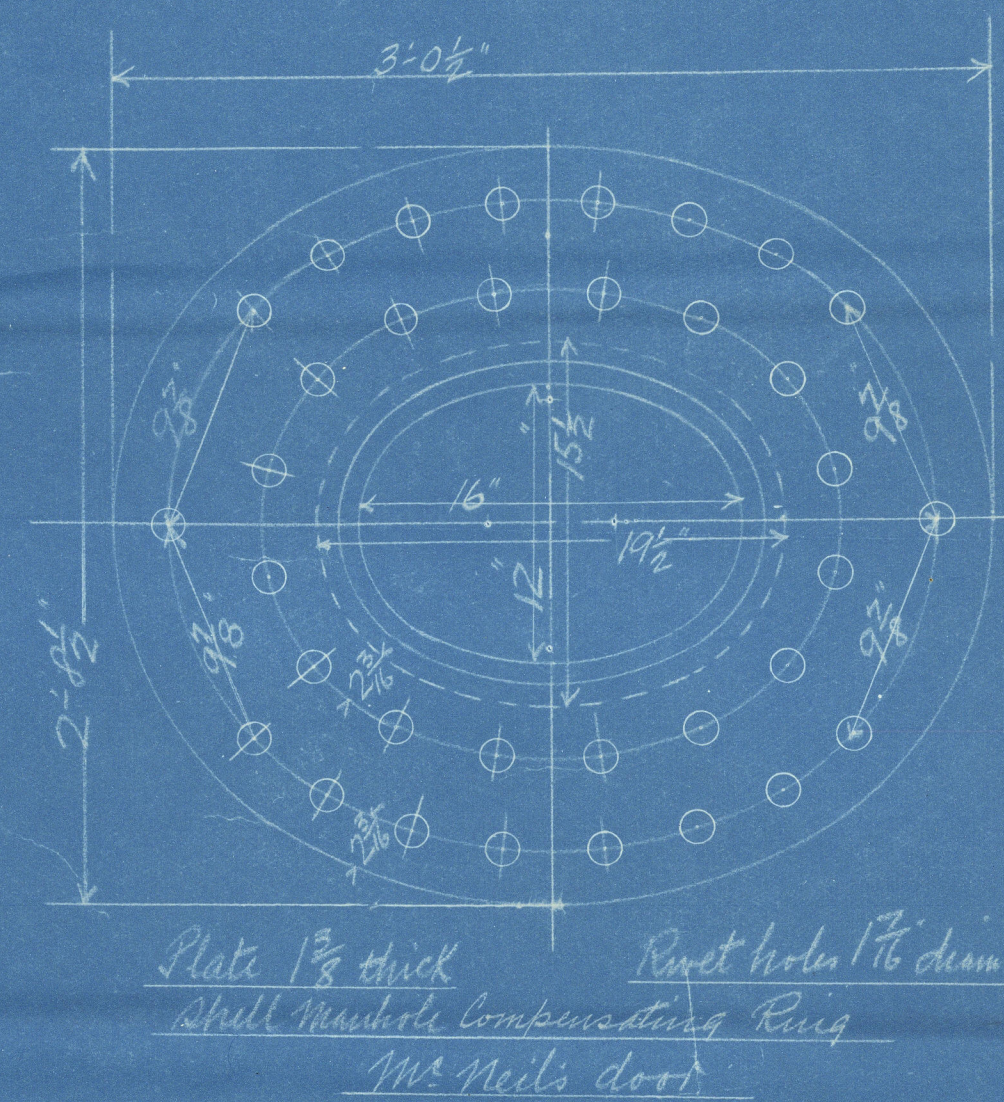


1119
3-4-25

Surfaces	for Boiler	2 Boilers
Shells	3320 #	6640 #
Shells top and sides	190	380
" Subplates	97	194
Surfaces	946	1892
Total Netting Surface	3353 #	6706 #
Grate area (5-5 tons)	105	210
Grate area	25.58	51.16
Water area	217	434
Steam space	645.6	1291.2
Grate area: Netting surface	1:130.7	
" " " Grate	1:131.6	
" " " Area	3:48:1	
" " " Water	1:206	
" " " Steam space	1:814	
% Boilers above grate	30.6	
Weight of water	37 TONS	74 TONS

Boiling		Back		Centre		Front	
LONGER	INNER	LONGER	INNER	LONGER	INNER	LONGER	INNER
COURSE	COURSE	COURSE	COURSE	COURSE	COURSE	COURSE	COURSE
Pitch	9 1/2	9 1/2	3 9/8	4 0/17	3 3/8		
% Plate	85.35	85.2	63.6	64.2	61.2		
% Rivet	92.5	94	44	72.8	47.1		
% Combined	84.2	89.8					

Limits of tensile strength and material		
Shells, butt straps, and binders	28 to 32 tons	Clemens Martin Steel
other plates	26 30 "	
Surfaces	26 30 "	
Main stays	28 32 "	
Rivet bars	26 30 "	
screwed stays	2 1/2 tons	IRON



MAIN. BOILER.

721 M. and 722 M. 2 OFF FOR 721 M. 2 OFF " 722 M.

Working press 200 lbs per sq inch
 Heat " 350.
 Scale 1" = one foot.



From DAVID & WILLIAM HENDERSON & CO. LTD.
 FOR ENCL. TO
 Messrs. R. & J. S. S. S. S.
 W233-0152 (2/2)

J. L. J. 16/4/25

11/9 3-4-25

GLASGOW

D. & W. HENDERSON & CO LTD

(2) DOUBLE ENDED -

BOILERS N^o 722 M

W.P. - 200 LBS

D. & W. HENDERSON & CO LTD

S/S N^o 722 M

starboard boiler

N^o 17004

LLOYD'S TEST

350 LBS

W.P. - 200 LBS

L.C.D. 16-12-25

Port boiler

N^o 17014

LLOYD'S TEST

350 LBS

W.P. - 200 LBS

L.C.D. 24-12-25

Director 2019

GLASGOW / REPORT No 45550

Lloyd's Register

W233-0152