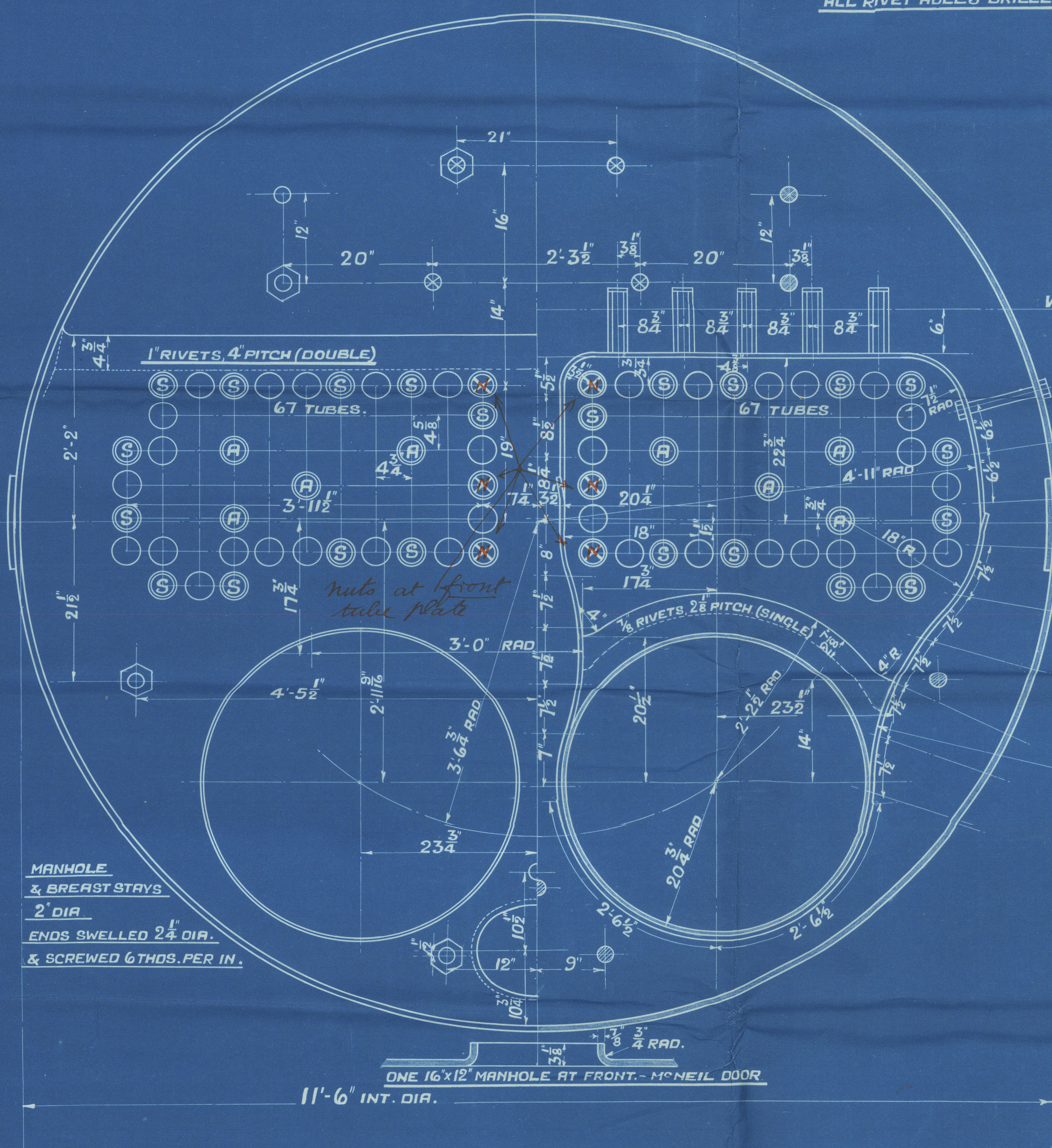


SURFACES	ONE BOILER
TUBES	860 #
FIREBOX TOP & SIDES	73 "
" BACK	41 "
" TUBEPLATE	23 "
FURNACES	78 "
TOTAL HEATING SURFACE	1075 #
GRATE AREA (5'0" BARS)	33.5 "
TUBE AREA	7.19 "
WATER AREA	108 "
STEAM SPACE	255 #
GRATE AREA : HEATING SURFACE	1 : 32.1
" " : TUBE	1 : 25.7
" " : AREA	4.65 : 1
" " : WATER	1 : 3.22
" " : STEAM SPACE	1 : 7.62
% BOILER ABOVE FIREBOX	33
WEIGHT OF WATER	132 TONS

RIVETTING	LONG ^L	END CIRC ^L
	RIVET HOLE DIA	
PITCH	5 1/2"	2-32"
% PLATE	84.9	64.9
% RIVET	85.8	53.4
% COMBINED	91.4	

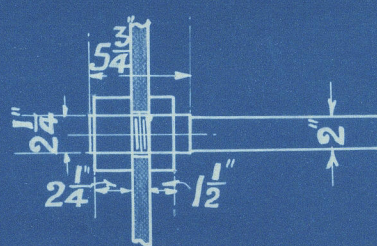
LIMITS OF TENSILE STRENGTH & MATERIAL	
SHELL BUTTSTRAPS, 28 TO 32 TONS	
AND GIRDERS	
OTHER PLATES	26 " 30 "
FURNACES	26 " 30 "
RIVET BARS	26 " 30 "
MAIN STAYS	28 " 32 "
SCREWED STAYS	21 1/2 TONS
	IRON.

ALL RIVET HOLES DRILLED IN PLACE



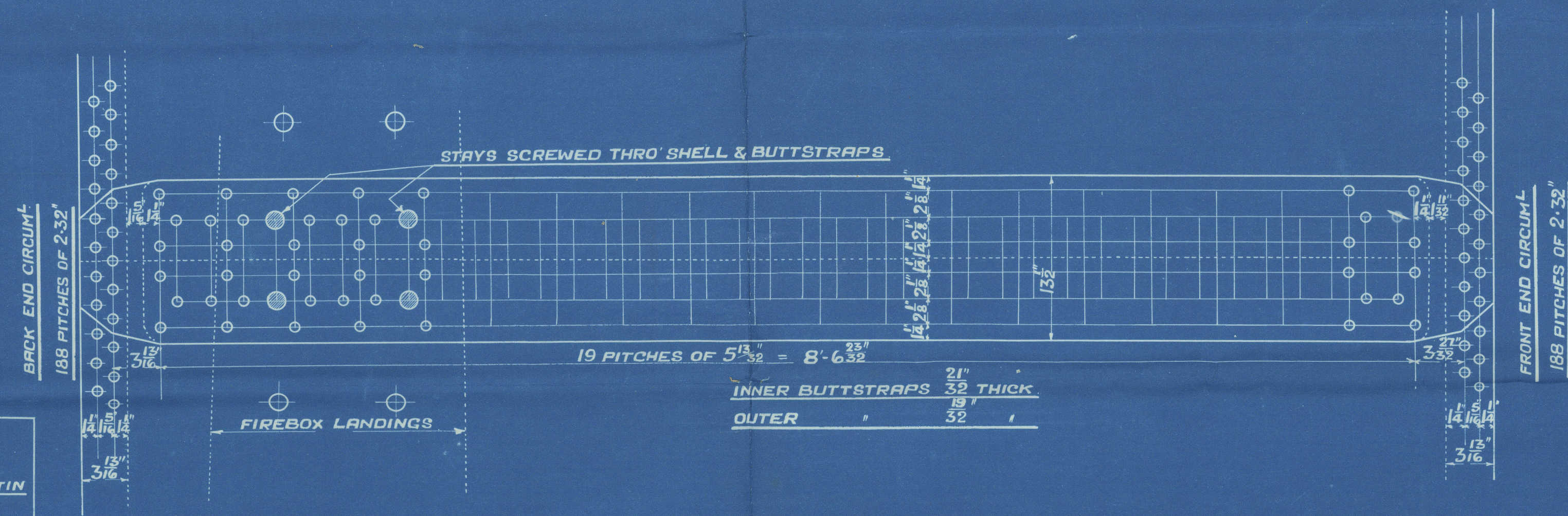
MANHOLE & BREAST STAYS
2" DIA.
ENDS SWELLED 2 1/4" DIA.
& SCREWED 6 THDS. PER IN.

ONE 16x12" MANHOLE AT FRONT - MCNEIL DOOR
11'-6" INT. DIA.

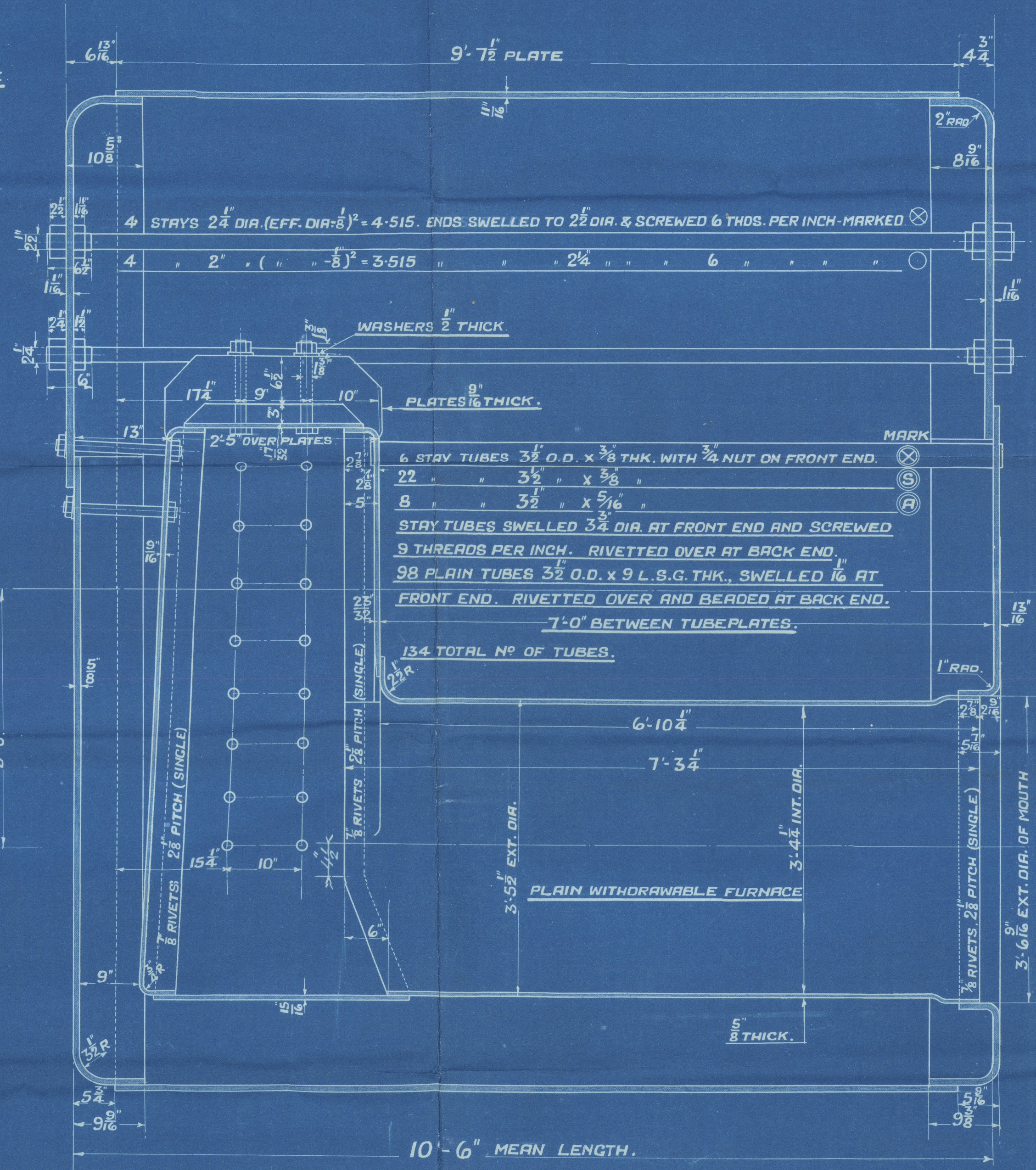


DETAIL OF MANHOLE & BREAST STAYS

UNDER LLOYDS SURVEY.
WORKING PRESSURE : 120 LBS. PER SQ. INCH
TEST : 230 " " " "



INNER BUTTSTRAPS 21" THICK
OUTER " 32 "



N^o 721M - 722M
DONKEY BOILER

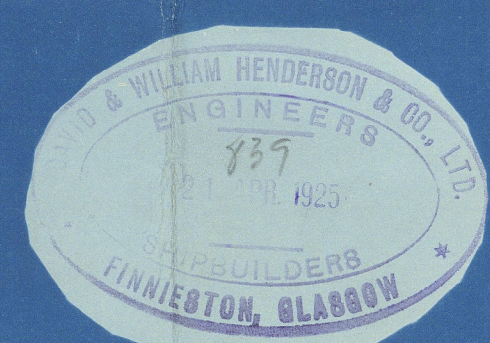
SCALE: 1" = 1 1/2' = 1 FOOT.

ONE OFF 721M.
ONE OFF 722M.

POSITION	MARK	DIA.	(DIA.-26")	SCREWED THDS/INCH	DEPTH OF NUTS
BACK, TOP & SIDES	○	1 1/8"	1.227	9	3/4"
BACK WIDE SPACE & TOP ROW	⊗	1 1/2"	1.52	9	3/4"
BACK TOP CORNER	⊙	1 1/8"	1.844	9	7/8"

ALL FIREBOX STAYS SCREWED THRO' BOTH PLATES & NUT FITTED AT EACH END.

W233-0151



GLASGOW

D. & W. HENDERSON & CO. L^{td}

DONKEY BOILER

N^o 722 M

WP. 120 LBS

D. & W. HENDERSON & CO. L^{td}

S/S N^o 722 M

N^o 16994

LLOYD'S TEST

230 LBS

WP. 120 LBS

L.C.D. 8.12.25

Director

GLASGOW REPORT No. 45550



© 2019

Lloyd's Register

Foundation 233 0151