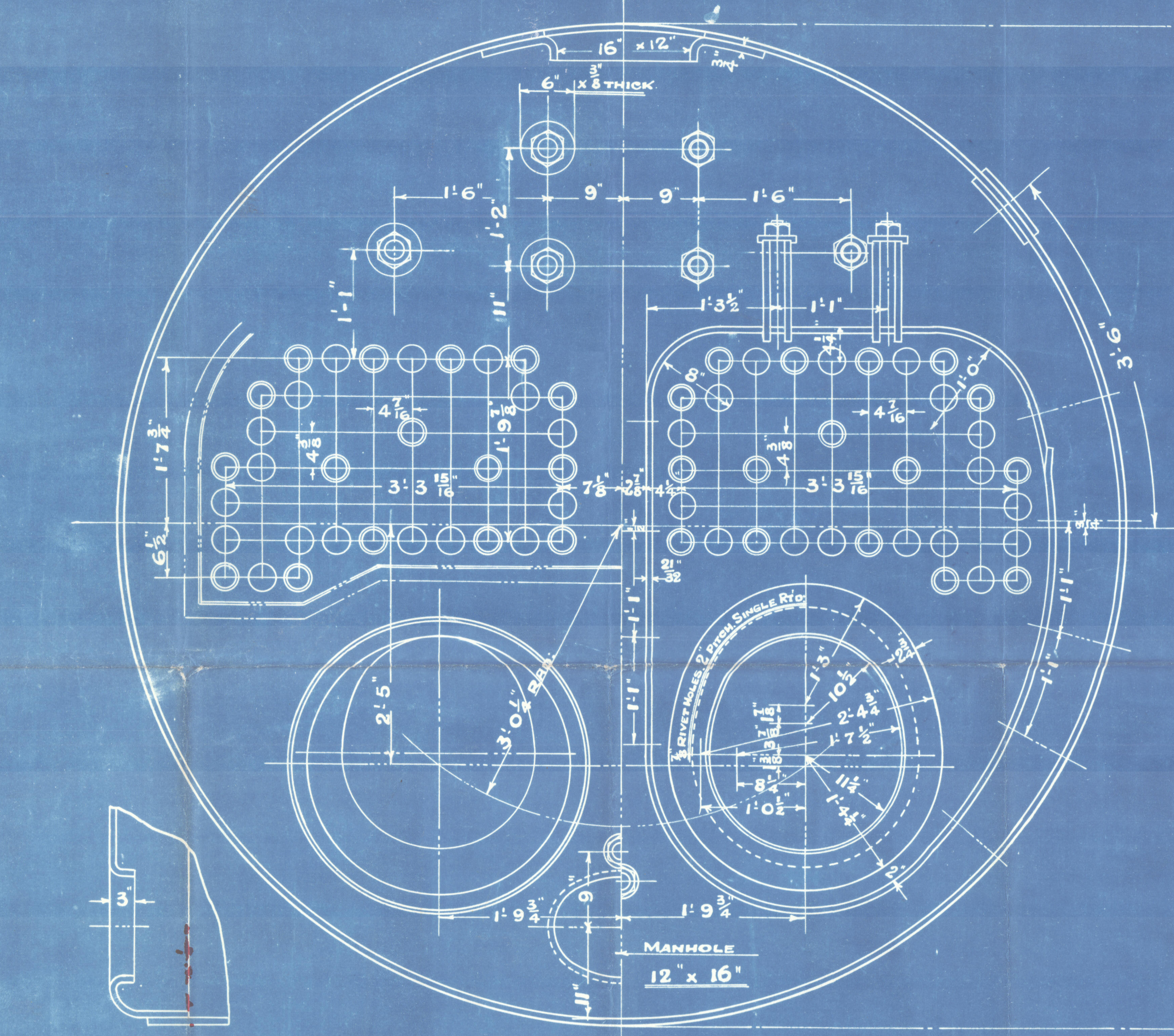
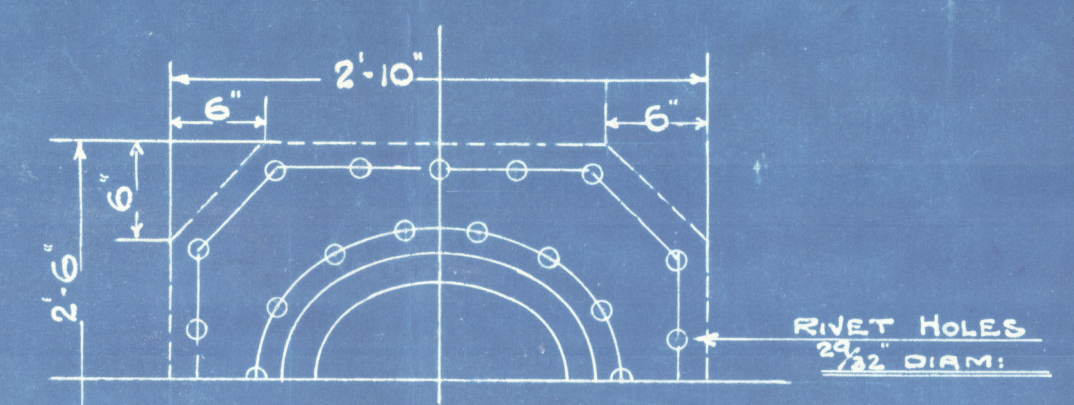


21/5/20

THE NORTH EASTERN MARINE ENGINEERING CO LTD
SUNDERLAND.
AUXILIARY BOILER.

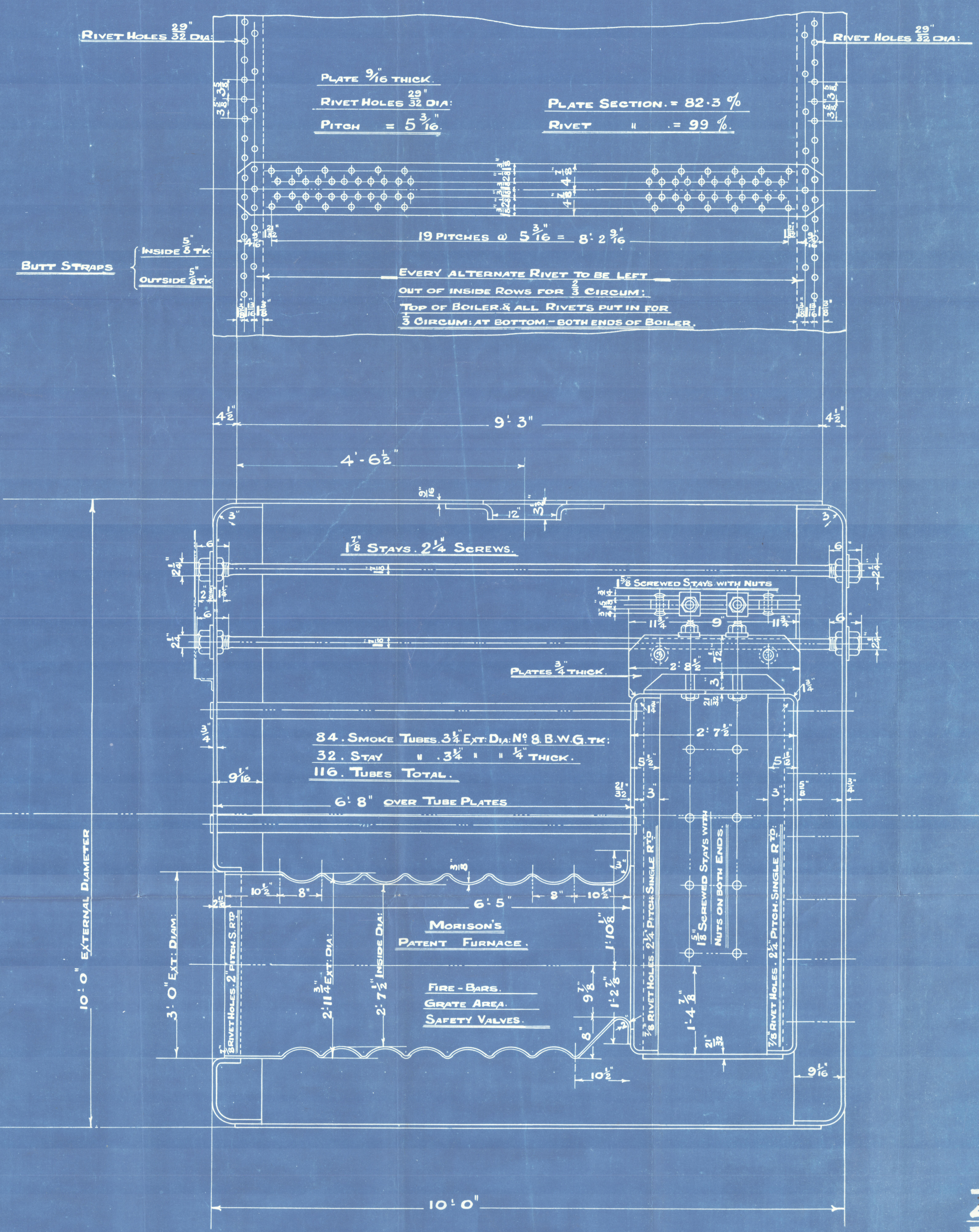
SCALE = 1 INCH TO A FOOT. SCHEDULE "L".

WRITTEN DIMENSIONS ONLY TO BE TAKEN.



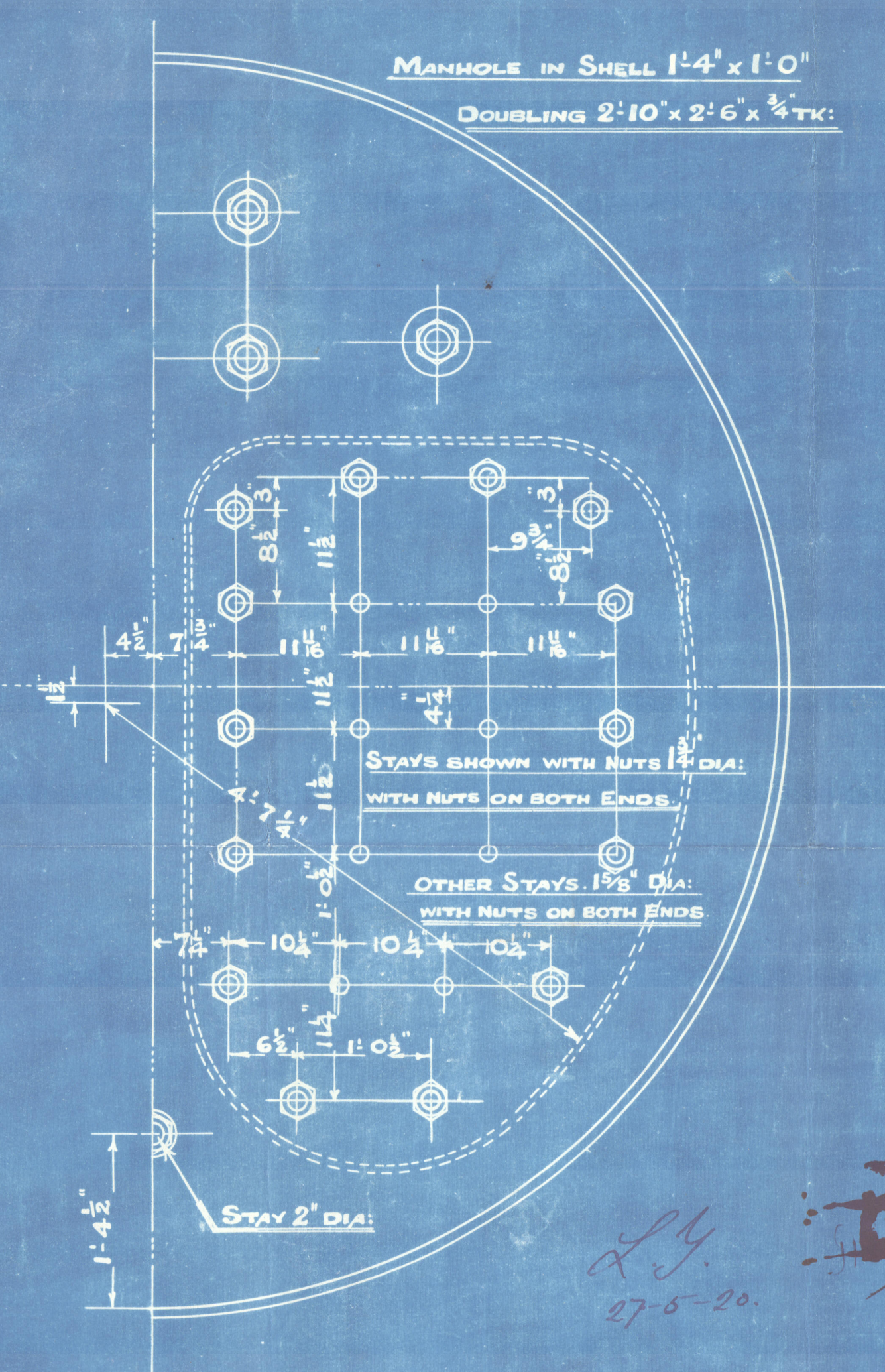
SECTION THRO' MANHOLE.

DRAWN BY... J.A.S.
TRACED BY... I.W.
CHECKED BY... J.A.S. 10/2/20



To PASS LLOYD'S SURVEY.

SHELL = 22(9-21)82.3	106 LBS PER 0"
WORKING PRESSURE	100 " " "
TEST	200 " " "
HEATING SURFACE ON TUBES	646 SQ. FEET
" " OTHER PARTS	206 " " "
" " TOTAL	852 " " "
EX: FRONT TUBE PLATE	837 " " "
EFFECTIVE AREA OF STAYS	
3 1/2" STAY TUBES, 4 TK, 9 THREADS PER INCH	1.64 SQ. INCHES
1 1/2" MAIN STAYS, 6, " " " " " "	2.76 " " "
1 1/2" SCREWED " " " " " "	2.03 " " "
1 1/2" " " " " " "	1.75 " " "
ALL PLATES, RIVETS & STAYS - STEEL -	
TUBES - WROUGHT IRON -	
HOLES TO BE DRILLED IN PLACE AFTER BENDING	
TENSILE STRENGTH OF SHELL PLATES 28 TO 32 TONS	
" " " GIRDER " " 28 TO 32 " " "	
" " " MAIN STAYS, 28 TO 32 " " "	



Z.55. FOR CONTRACT 2488. I. OFF.
Z.56. FOR CONTRACT 2492. I. OFF.

DRAWING NO 7017.

SUNDERLAND

N.E. MARINE ENGG:LD

DONKEY BOILER N^o 256

W.P. = 100 LBS

DUPLICATE OF N^o 255

(ENGINES N^o 2492)

~~REDERIAKTIEBOLAGET~~

~~SVENSKA LLOYDS~~

~~GÖTTENBURG~~

~~SS N^o 21~~
For S.S. "GYP"

Amended plan

No. 3790
LLOYD'S TEST
200 lbs.
W.P. 100 lbs
G.A.H. 2.2.22

8/5 Gyp

SUNDERLAND. Rpt. N^o 28268



W232-20070

Lloyd's Register
Foundation