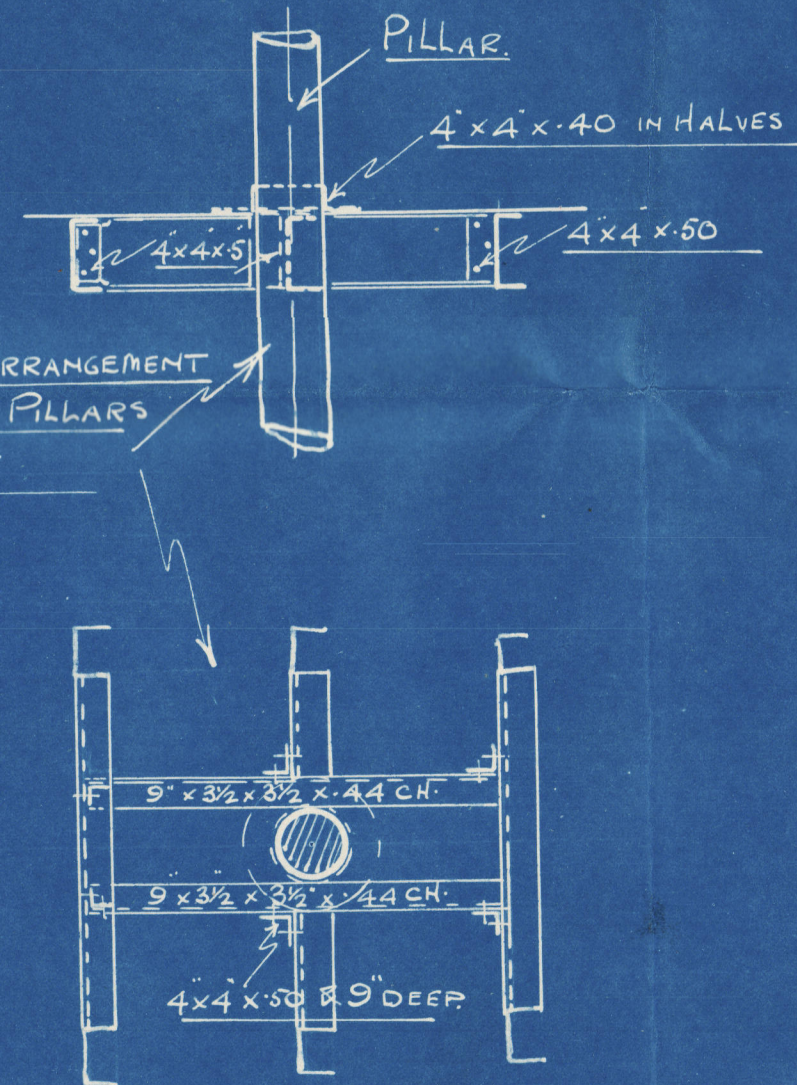


SKETCH SHewing CARLIN ARRANGEMENT IN WAY OF REFRIG. SUPPORT PILLARS WHICH ARE NOT TO BE CUT



N.B. // FOR GENERAL DETAILS OF CONSTRUCTION SEE NO 2 HOLD BASIS PLAN. //

5/8 "VIKINGSTAR"

NO 3 HOLD.

SKETCH SHewing PROPOSED ORLOP DECK & PILLAR STRENGTHENING TO 2ND D.K. FOR CARRIAGE OF CHILLED MEAT.

Scale 1/4" = 1 ft.

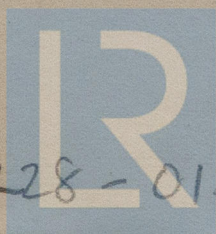
**R**  
ROBINSON-HAMILTON & ADAMSON  
CONSULTING ENGINEERS  
NAVAL ARCHITECTS  
19 JAMES STREET  
LIVERPOOL.  
19. 3. 1923

W 228-0155



Viking Star

Lin. 86549.



© 2019

W 228-0155 Lloyd's Register  
Foundation