

~~Section 583~~

London  
Copy

Nya Tams Ap Oresund

No. 24.

Crank shaft  
Engine No. 1.

S.S. "Valencia"

Hbg. 53.



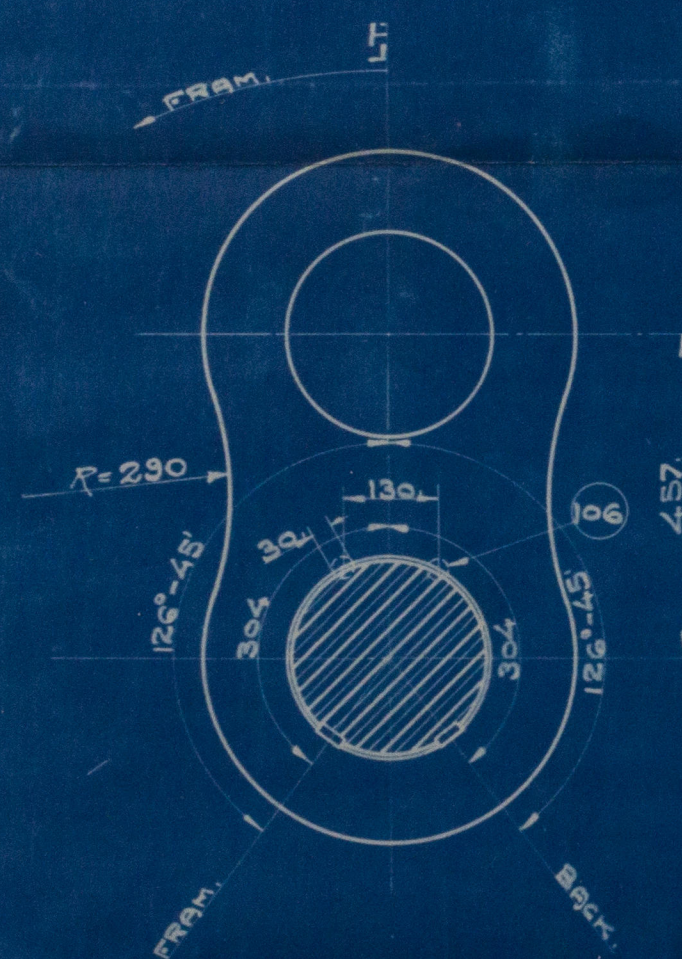
© 2019

Lloyd's Register  
Foundation

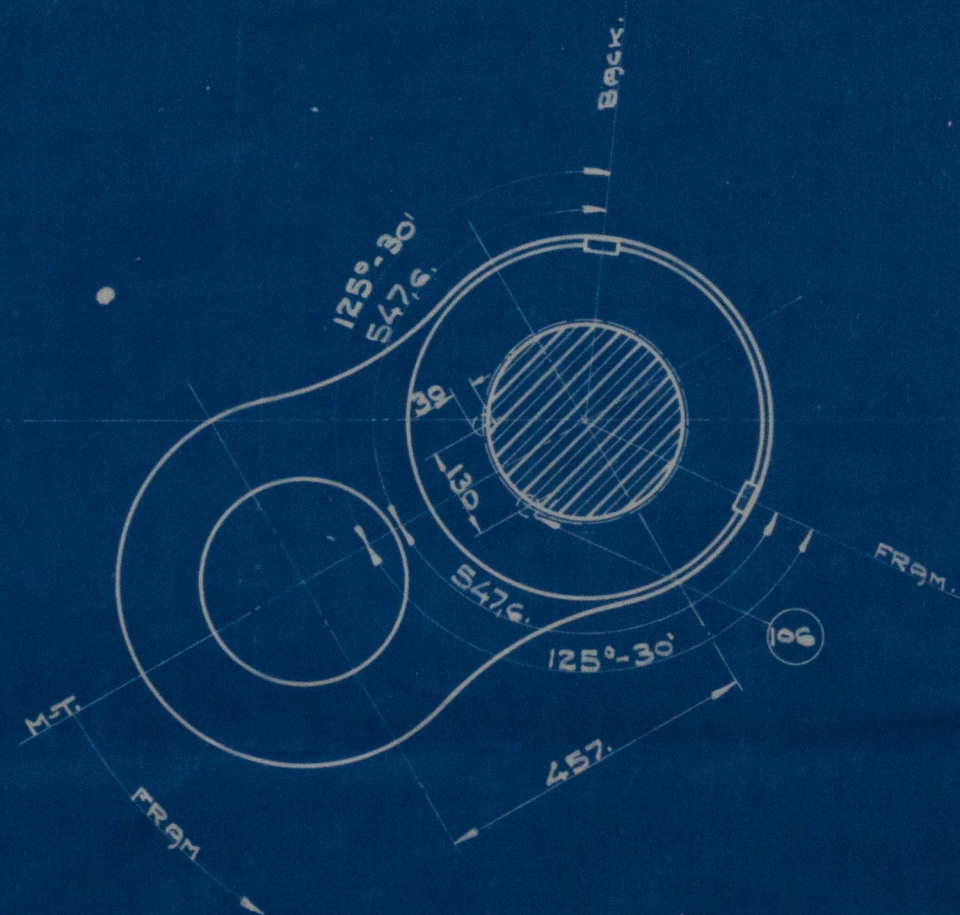
W226-0085



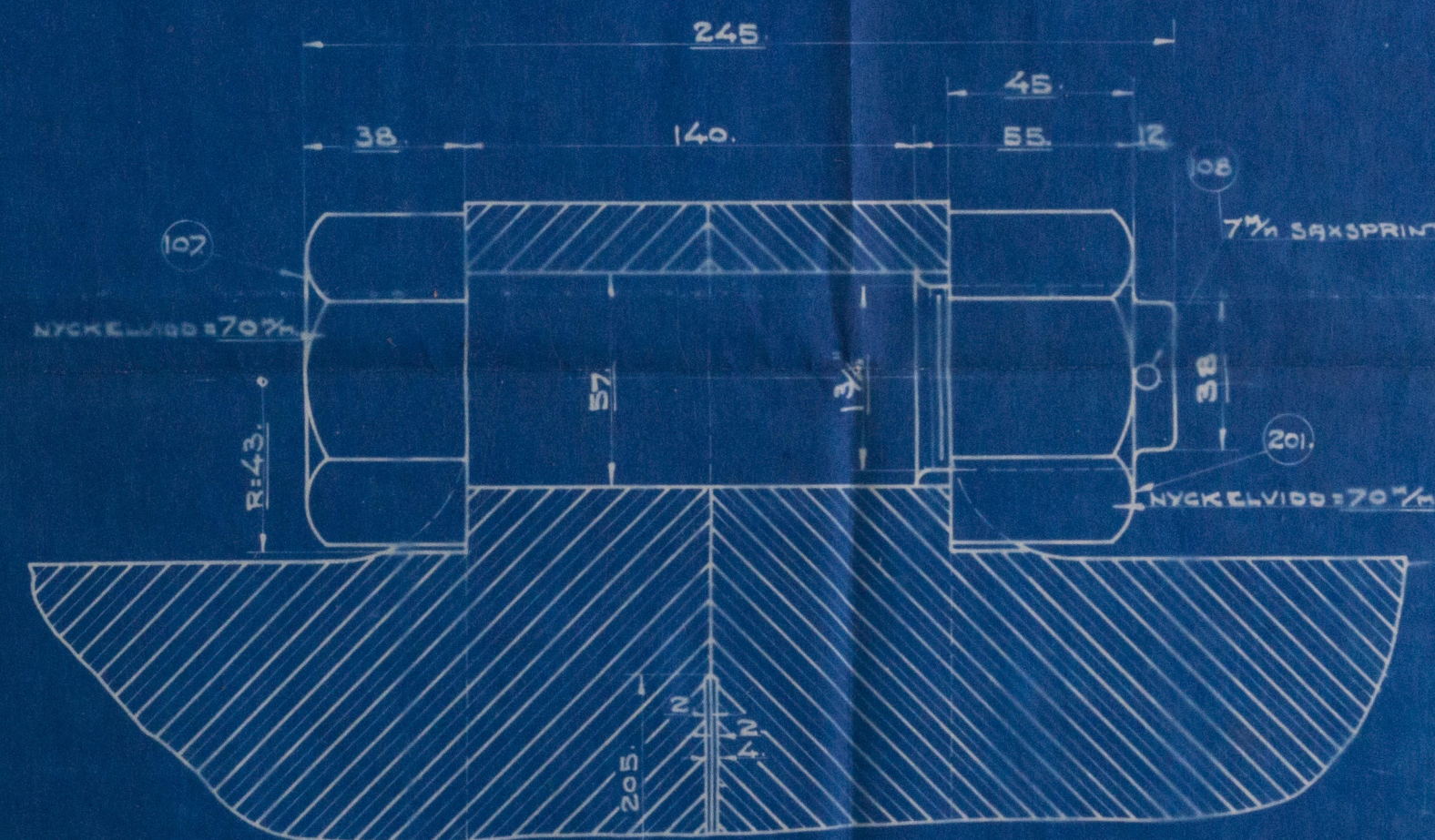
VEVÄXELN BEARBETAS ÖVERGÅTT.



SEKTION A-A.



SEKTION B-B.



ANTAL					MÄRKE	BENÄMNING	MATERIAL	MOEN
1	1	1.	1.	2. 2.	101.	AXEL.	SMIDJÄRN.	
1	1	1.	1.	3. 3.	102.	—	—	
1	1	1.	1.	3. 3.	103.	VEVTAPP.	—	
—	—	—	—	1. 1.	104.	AXEL.	—	
2	2	2.	2.	6. 6.	105.	VEVÄRM.	—	
4	4	4.	4.	12. 12.	106.	DUBB.	—	
9	9	9.	9.	18. 18.	107.	BOLT 57 $\frac{1}{2}$ H.	—	
9	9	9.	9.	18. 18.	108.	SAXSPRINT 7x64	—	
9	9	9.	9.	18. 18.	201.	MUTTER 13 $\frac{1}{2}$ H.	—	

VEVAXEL.

GR. AV. *PC*  
KOP. AV. *12-2-74*  
GODK. AV. *12-2-74*  
Information Classification Authority  
LADA 32. No. 17.