

S. S. N° 383.

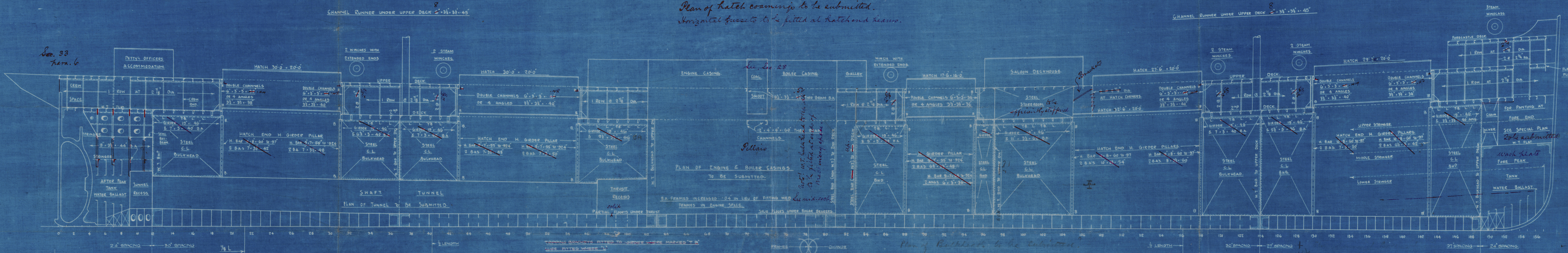
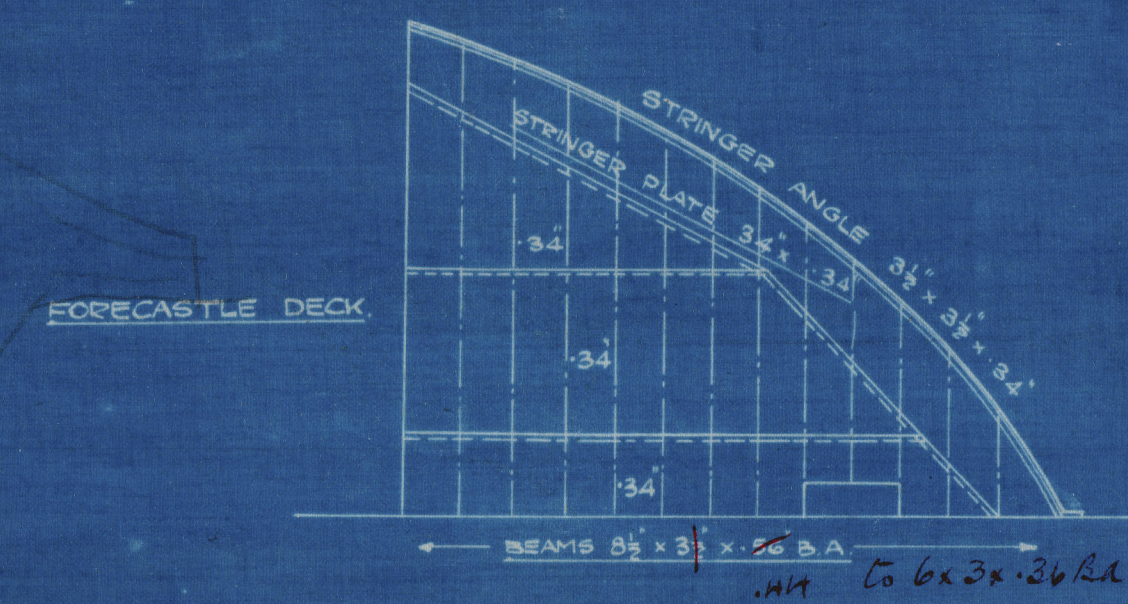
PROFILE & DECK PLANS.

— LENGTH B.P. 380'0" BREADTH MLD 51'8" DEPTH MLD 26'0" + 8'0" TWEEN DECKS. —

For Rule Length — CLASS 100 A1. WITH FREEBOARD. MAX. DRAFT 24'10" MLD. —

— SCALE 1/8" = 1 FOOT —

Plan of hatch coaming to be submitted.  
Horizontal frames to be fitted at hatch and beams.

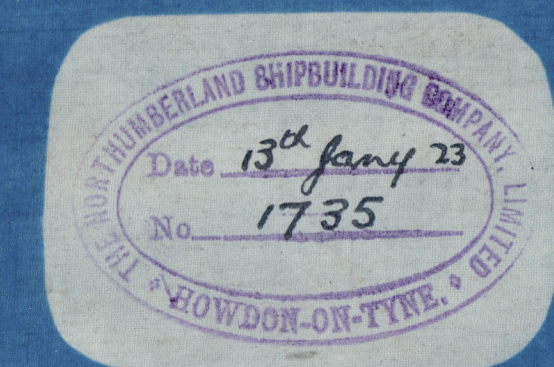


UPPER DECK

UPPER DECK

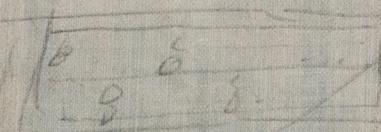
2ND DECK

2ND DECK





Northumberland  
Profile bk plan



© 2019

N215-0052

Lloyd's Register  
Foundation



Newcastle

NORTHUMBERLAND S. B. Co. Ltd

SHIP. 383

PROFILE AND DECKS



Trongate

S.S. "SNOWDON."

NEWCASTLE ON TYNE.

Report No. 44502.

No 1

S.S. "OVERSTONE."

NEWCASTLE ON TYNE.

Report No. 44614.

W225-0052



© 2019

Lloyd's Register  
Foundation