

MIDSHIP SECTION

S.M.V. Nos. 898-99

SCALE 1/2" = 1 FOOT

TO CLASS 100.A.I. WITH FREEBOARD AT LLOYD'S SPECIAL SURVEY.

COMPLETE SUPERSTRUCTURE VESSEL WITH TONNAGE OPENING.

DIMENSIONS: 425'-0" B.P. ON L.W.L. = 56'-0" M.L. - 56'-3" EXT. = 27'-9" M.L. TO 2ND DK. - 36'-9" M.L. TO UPPER DK.

LLOYD'S NUMERALS:
FIRST LONGITUDINAL NUMBER $L \times D = 425.0 \times 35.75 = 15193.75$
SECOND LONGITUDINAL NUMBER $L \times (B+D) = 425.0 \times (56.0 + 35.75) = 38993.75$
D TO UPPER DECK = $425.0 + 36.75 = 11.56$
D MOULDED DEPTH = $27.75 + 8.0 = 35.75$
d = $36.75 - (9.0 + 4.0) = 23.75$

EQUIPMENT NUMBER:
SECOND LONGITUDINAL NUMBER $425.0 \times (36.0 + 36.75) = 32418.75$
FORECASTLE $40.0 \times 7.5 = 300.00$
MIDSHIP ACCOMMODATION & CASING $72.25 \times 8.0 = 578.00$
SALOON ACCOMMODATION $30.0 \times 8.0 = 240.00$
EQUIPMENT NUMBER = 40052.75

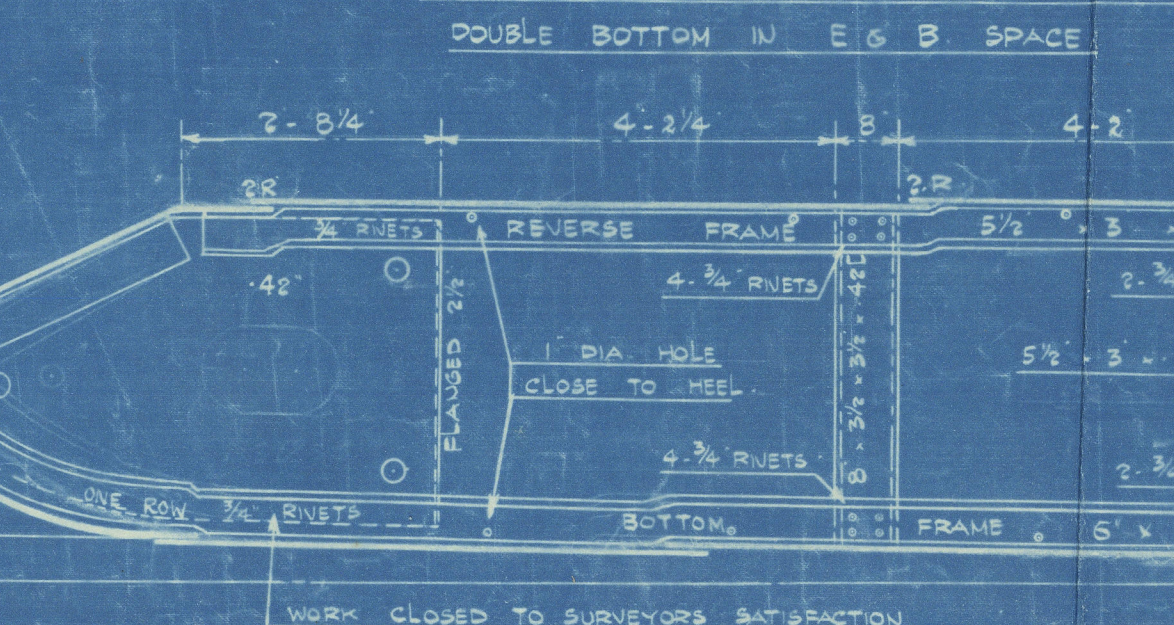
EQUIPMENT:
2 BOWER ANCHORS 68 CWT. EACH STOCKLESS
1 BOWER ANCHOR 58 1/2 CWT. EX-STOCK
1 STREAM ANCHOR 19 CWT. EX-STOCK
270 FATHOMS 2 1/2" STUD CHAIN CABLE 720 3/4 CWT. OR 2 TAYCO CABLE
30 FATHOMS 1 1/2" STREAM CHAIN OR 5 FLEXIBLE STEEL WIRE 6" x 12
120 FATHOMS 4 1/2" SPECIAL FLEXIBLE STEEL WIRE 6" x 24
2 HAWSERS 20 FATHOMS 6" HEMP OR 2 1/2" FLEXIBLE STEEL WIRE 6" x 12
2 WARPS 20 FATHOMS 7" HEMP OR 2 1/2" FLEXIBLE STEEL WIRE 6" x 12

RIVETING NOTE:
RIVETS IN FRAMES TO FLOORS AND CROSS TIE PLATES IN AFT PEAK SPACED 5 DIAM. APART C^o TO C^o.
RIVETS IN FRAMES TO SHELL AT FLAT OF DOUBLE BOTTOM FOR 1/2 LENGTH FORD SPACED 5 1/2 DIAM. (TWO COMPLETE ROWS)
RIVETS IN FRAMES TO FLOORS AT FLAT OF DOUBLE BOTTOM FOR 1/2 LENGTH FORD SPACED 6 1/4 DIAM. (TWO COMPLETE ROWS)
RIVETS IN SIDE FRAMES TO SHELL SPACED 6 1/2 DIAM. APART 5 1/2 DIAM. APART IN WAY OF FORE AND AFT
PEAK TANKS AND DEEP FRAMING FORWARD 7 1/2 DIAM. APART C^o TO C^o.
RIVETS IN BOTTOM FRAMES TO SHELL AFT HALF LENGTH FORWARD SPACED 7 DIAM. APART C^o TO C^o.
RIVETS IN 3 R. BUTTS OF OUTSIDE PLATING AND OF DECK STRINGER PLATES SPACED 3 1/2 DIAM. APART C^o TO C^o.
RIVETS IN 4 R. BUTTS OF OUTSIDE PLATING AND OF DECK STRINGER PLATES SPACED 4 DIAM. APART C^o TO C^o.
RIVETS IN SEAMS OF SHELL PLATING, DECK PLATING AND INNER BOTTOM PLATING AS PER TABLE 40.
RIVETS IN BUTTS OF DECK PLATING, INNER BOTTOM AND MARGIN PLATING SPACED 4 DIAM. APART C^o TO C^o.
RIVETS IN SEAMS AND BUTTS OF BULKHEAD AND TUNNEL PLATING, MARGIN ANGLES AND WEATHER DECK STRINGER
ANGLES AND BULKHEAD FRAMES TO BULKHEAD SPACED 4 1/2 DIAM. APART C^o TO C^o.
RIVETS IN FLAT KEEL ANGLES, VERTICAL ANGLES CONNECTING FLOORS TO CENTRE GIRDER, AND SHELL FLANGES OF
WATERTIGHT BULKHEAD FRAME SPACED 5 DIAM. APART C^o TO C^o.
RIVETS IN FRAMES TO FLOORS AFT HALF LENGTH FORWARD, REVERSE FRAMES TO FLOORS AND INNER BOTTOM PLATING,
VERTICAL ANGLES TO FLOORS AND SIDE GIRDERS, IN BULKHEAD STIFFENERS (EXCEPT PEAK BULKHEADS) AND IN
DECK PLATING TO BEAMS ON EVERY FRAME SPACED 7 DIAM. APART C^o TO C^o.
RIVETS IN CENTRE GIRDER TOP ANGLES SPACED 7 DIAM. APART C^o TO C^o.
RIVETS IN CENTRE GIRDER TOP ANGLES SPACED 5 DIAM. APART C^o TO C^o.
WATERTIGHT.

SCANTLINGS AND DETAILS OF CONSTRUCTION NOTED HEREON ARE
SUBMITTED ON THE UNDERSTANDING THAT THEY ARE THE MINIMUM
WHICH WILL BE ACCEPTED FOR CLASS. ERRORS AND OMISSIONS EXCEPTED.

STEM 10" x 2 1/2", STERNPOST 10" x 8", RUDDER POST 10" x 8"

NOTE: - SEE ALSO SEPARATE PLAN OF
DOUBLE BOTTOM IN E.G.B. SPACE



SPECIAL PLAN OF BOTTOM STRENGTHENING
FORWARD TO BE SUBMITTED LATER

DISPOSITION OF FLOORS:
SOLID FLOORS ON EVERY FRAME IN ENGINE SPACE AND
FORWARD 1/2 LENGTH FOR 2" UNDER BOILER BEARERS & BULKHEADS
ELSEWHERE SOLID FLOORS ON
EVERY THIRD FRAME BRACKET FLOORS INTERMEDIATE

KEEL OUT

50" x 78" FOR 1/2 LEU. & TO
60" AT ENDS BUTTS LAPPED
5 1/2" TO 3 R. AT ENDS
1 RIVETS IN BUTTS OVER 72"

A IN
78" x 60" FOR 1/2 LEU. &
TO 60" AT ENDS
BUTTS LAPPED 5 3 R.

B OUT
70" x 60" FOR 1/2 LEU. &
TO 60" AT ENDS
BUTTS LAPPED 5 3 R.

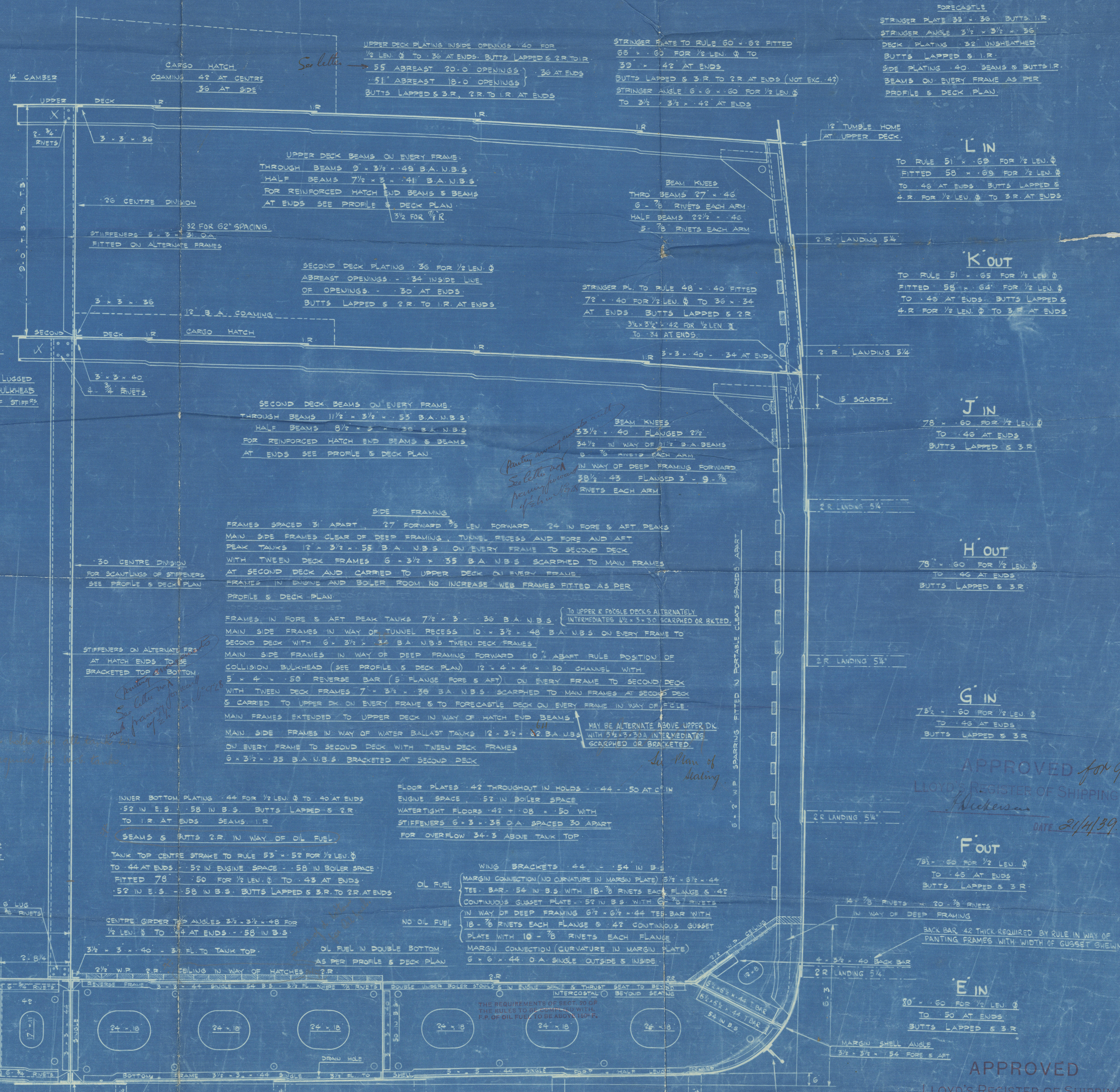
C IN
69 1/2" x 60" FOR 1/2 LEU. &
TO 60" AT ENDS
BUTTS LAPPED 5 3 R.

D OUT
69 1/2" x 60" FOR 1/2 LEU. &
TO 60" AT ENDS
BUTTS LAPPED 5 3 R.

NOTE: - 6 1/2" x 6 1/2" TEE BAR MARGIN CONNECTION CONTINUOUS GUSSET
PLATE & BACK BAR TO SUIT OWNERS REQUIREMENTS

OWNER'S
TANK TOP UNDER ENGINE BED PLATE TO BE NOT LESS THAN
1" THICK AND TO BE STIFFENED TO OWNER'S REQUIREMENTS
FLOORS TO BE FITTED TO EVERY FRAME UNDER ENGINES FLOORS
AND INTERCOSTALS AND ATTACHMENT ANGLES TO BE 72" IN
EXCESS OF LLOYD'S REQUIREMENTS MARGIN PLATES TANK TOP
PLATES UNDER BOILERS AND ALL FLOORS INTERCOSTALS AND
ATTACHMENT ANGLES IN TANKS UNDER BOILERS TO BE 120 OVER
LLOYD'S REQUIREMENTS.

REQUIREMENTS:
FRAMING IN FORE HOLD TO BE SPECIALLY STRENGTHENED IN
PAINTING AREA BAYS PLATE TO BE OUTSIDE STRONG ALL DECK
PLATING TO BE 1/2" IN EXCESS OF CLASSIFICATION REQUIREMENTS
UPPER DECK TO BE STIFFENED WITH FORE AND AFT GIRDERS
INCORPORATED WITH HATCH SIDES TO EXTEND FROM FREE END OF NO 2
HATCH TO AFT END OF NO 5 HATCH TO OWNER'S APPROVAL. STEEL
& BULKHEADS OF 3/4" THICKNESS TO BE FITTED IN ALL LOWER HOLDS
AND SHELTER TWEEN DECK CLEAR OF HATCHES



FORECASTLE
STRINGER PLATE 36" x 36" BUTTS 1 R.
STRINGER ANGLE 3 1/2" x 3 1/2" x 36"
DECK PLATING 36" UNSTRENGTHENED
BUTTS LAPPED 5 1 R.
SIDE PLATING 40" BEAMS & BUTTS 1 R.
BEAMS ON EVERY FRAME AS PER
PROFILE & DECK PLAN

L IN
TO RULE 51" x 60" FOR 1/2 LEU. &
FITTED 50" x 60" FOR 1/2 LEU. &
TO 40" AT ENDS BUTTS LAPPED 5
4 R. FOR 1/2 LEU. & TO 3 R. AT ENDS

K OUT
TO RULE 51" x 60" FOR 1/2 LEU. &
FITTED 50" x 60" FOR 1/2 LEU. &
TO 40" AT ENDS BUTTS LAPPED 5
4 R. FOR 1/2 LEU. & TO 3 R. AT ENDS

J IN
78" x 60" FOR 1/2 LEU. &
TO 40" AT ENDS
BUTTS LAPPED 5 3 R.

H OUT
78" x 60" FOR 1/2 LEU. &
TO 40" AT ENDS
BUTTS LAPPED 5 3 R.

G IN
78" x 60" FOR 1/2 LEU. &
TO 40" AT ENDS
BUTTS LAPPED 5 3 R.

F OUT
78" x 60" FOR 1/2 LEU. &
TO 40" AT ENDS
BUTTS LAPPED 5 3 R.

E IN
80" x 60" FOR 1/2 LEU. &
TO 60" AT ENDS
BUTTS LAPPED 5 3 R.

APPROVED
LLOYD'S REGISTER OF SHIPPING
Hickerson
DATE 2/14/39

APPROVED
LLOYD'S REGISTER OF SHIPPING
Hickerson
DATE 5-8-36

MARGIN PLATE TO RULE 39" FITTED ABOUT
44 1/2" x 154" x 160" IN 8' S.
BUTTS LAPPED 5 3 R. THROUGHOUT

REMARK: by this at
all full

APPROVED
LLOYD'S REGISTER OF SHIPPING
Hickerson
DATE 2/14/39

LITHGOWS L^{TD}

N^o 898-9 - 928

MIDSHIP SECTION

M.V. TREVALGAN



GRK. 1ST ENTRY REPORT

N^o 20425.

M.V. TREVANION

GRK. 1ST ENTRY REPORT N^o 20445

928

"TREVILLEY"

GRK. 1ST ENTRY REPORT N^o 21036.



© 2019

Lloyd's Register
Foundation

W224-0168