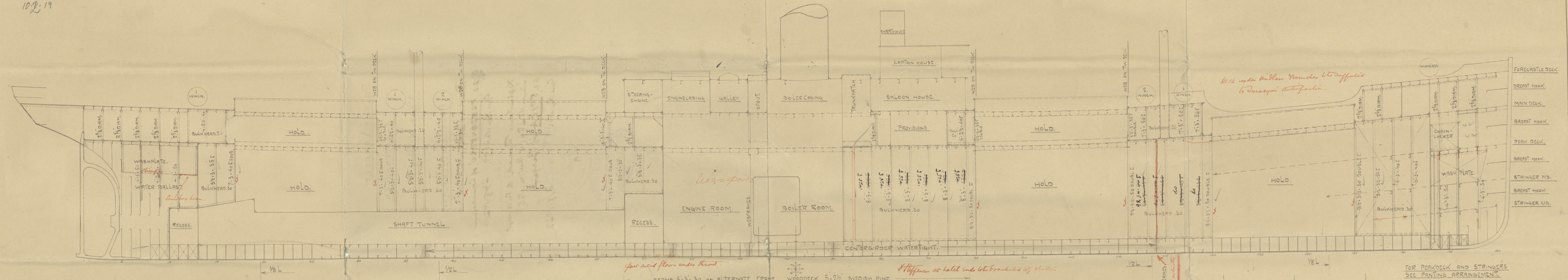


10.2.19



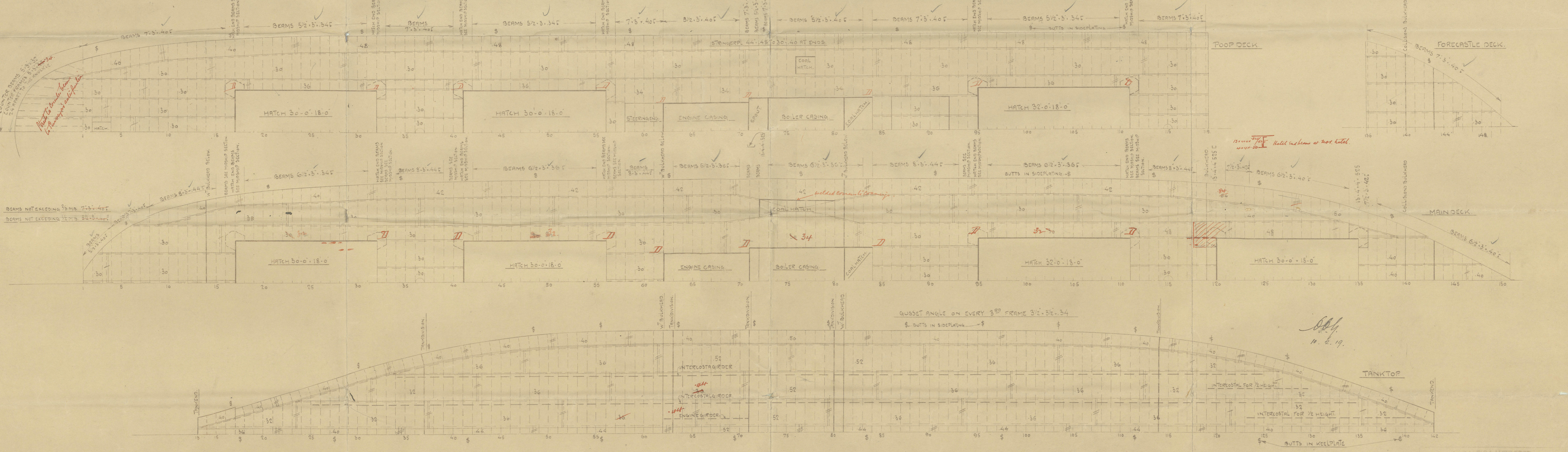
PROFILE AND DECK PLANS. S/S N° 4 & 5.

DIMENSIONS.	
LENGTH OUTSIDE STEM AND STERNPOST.	301'-5"
BREADTH MOULDED.	44'-0"
DEPTH TO MAIN DECK.	22'-11"
DEPTH TO POOP DECK.	30'-2"
HEIGHT OF POOP DECK.	7'-3"
HEIGHT OF FORECASTLE DECK.	7'-3"
HEIGHT OF BOAT DECK.	7'-0"
HEIGHT OF CAPTAIN'S HOUSE.	7'-0"
HEIGHT OF CHARTHOUSE.	7'-0"

SCALE 1/8" = 1 FOOT.

CLASS: BRITISH LLOYDS 100 A.I.

TYPE: SINGLEDECK WITH LONG POOP & FORECASTLEDECK. BROUGHT AS DEEP AS POSSIBLE. SPEED 10.5 KNOTS.



S.S. 10.2.19.



BALTICA VÆRFTET

2.

COPENHAGEN.

YARD No 4 & 5.

now "Tennessee"

PROFILE & DECKPLANS.

(Baltica Værft, Sews No 4.

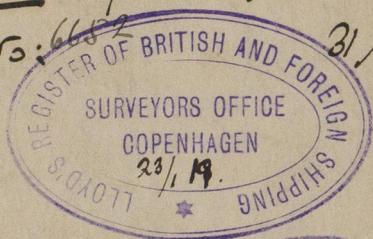
✻ s.s. "FREDENSBRO", of Copenhagen  
Cm. Rep. No. 6099, 22/3. 1921.

n. n. "Tennessee."

Kjølbenkærns Flydask & Skibsværft,  
Sew. No 256 (ex Baltica No 5)

s.s. "SPICA" of Bergen.

Cm. Rep. No. 6652 21/8. 1923.



© 2019

Lloyd's Register  
Foundation

W223 - 0022