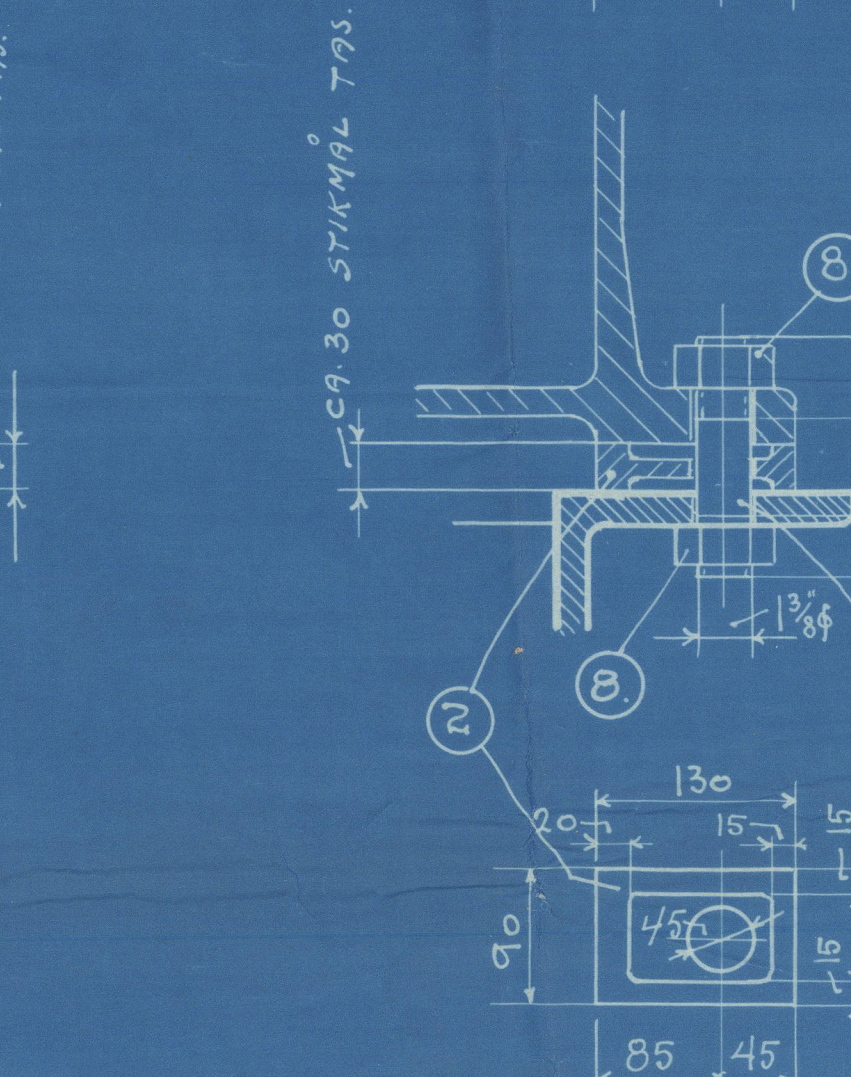
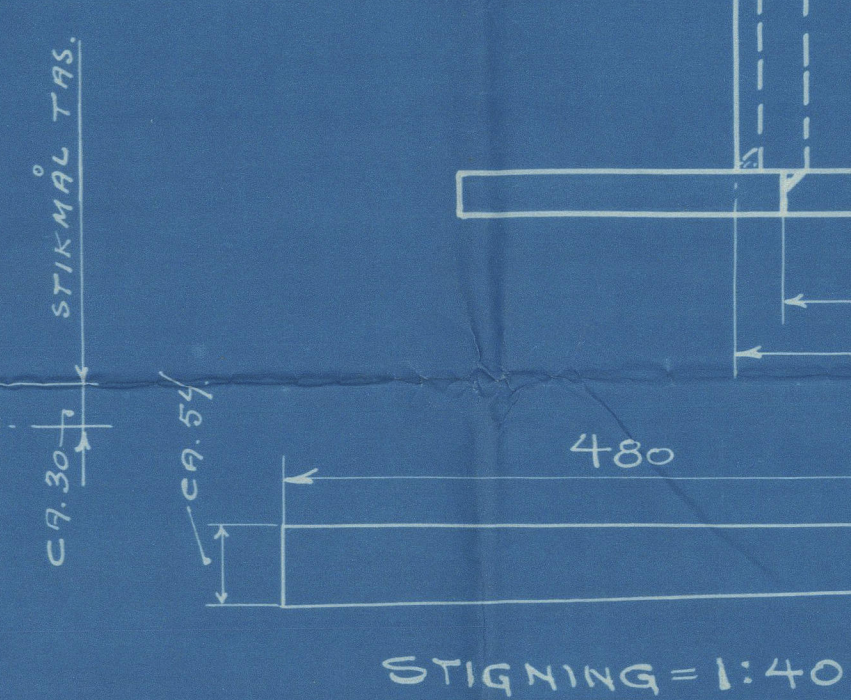
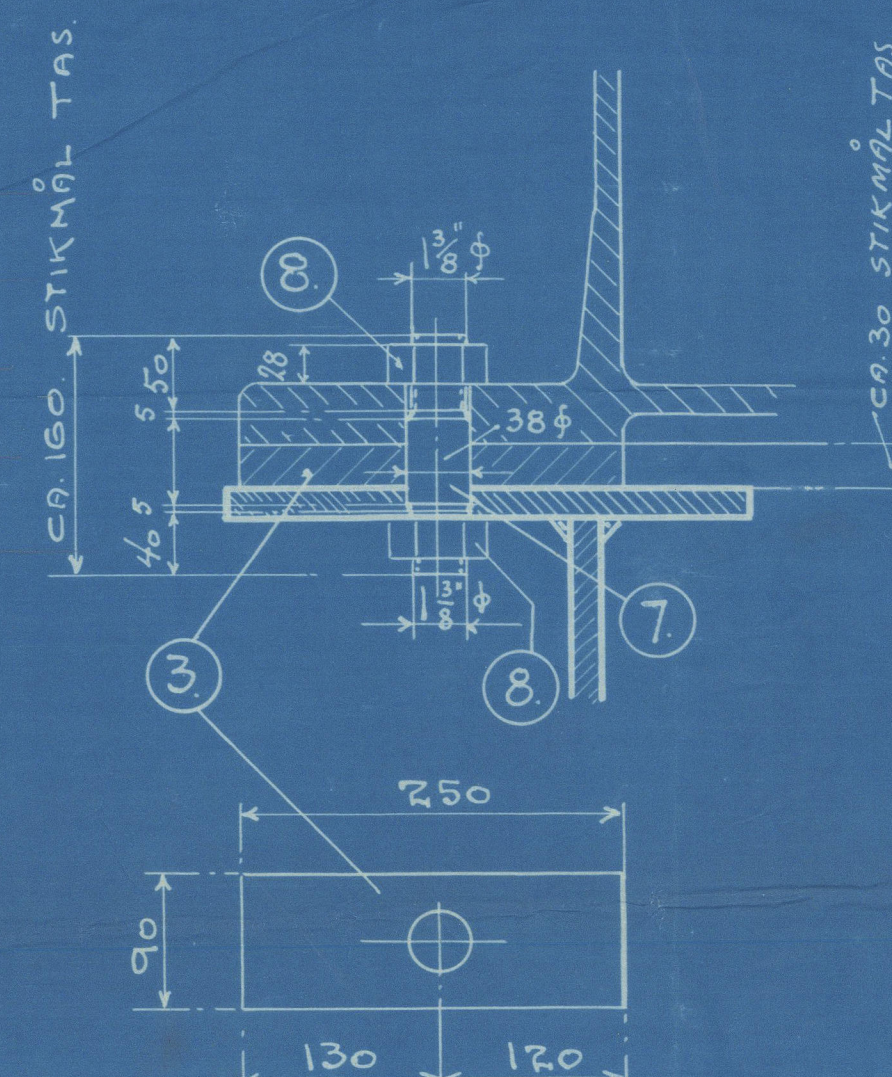
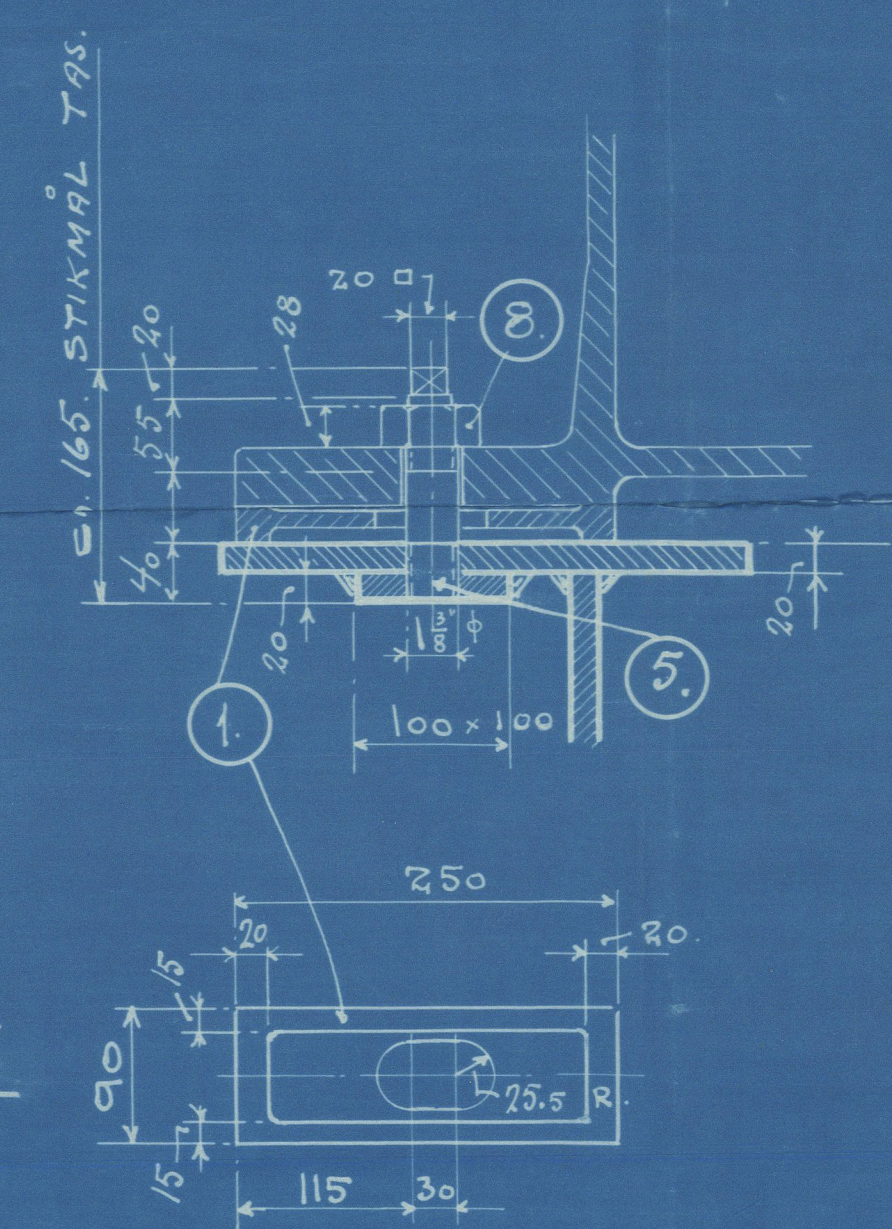
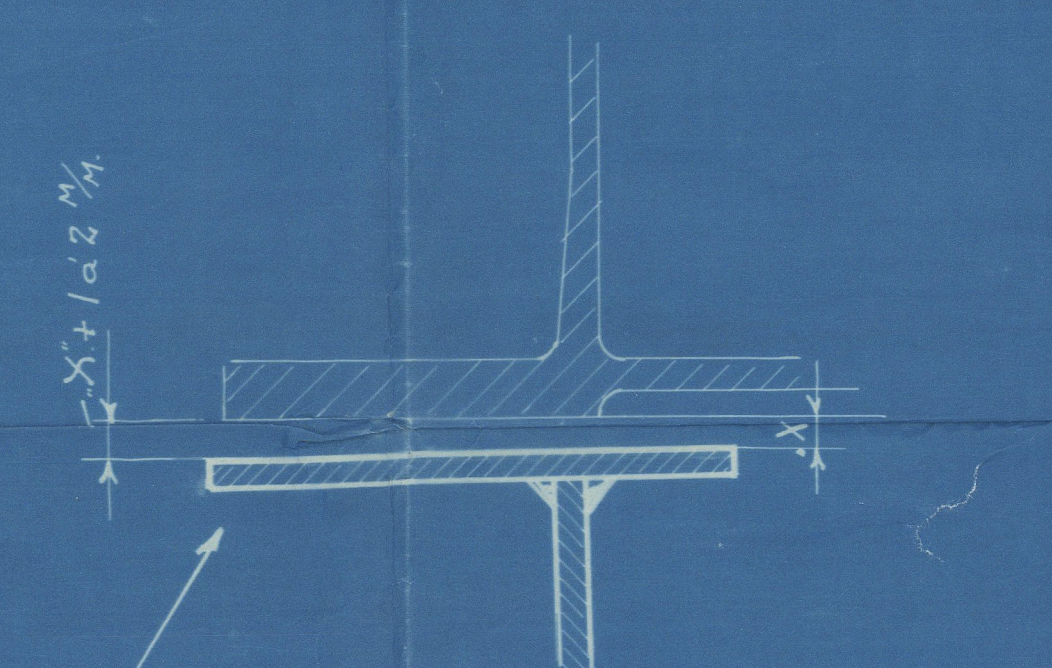
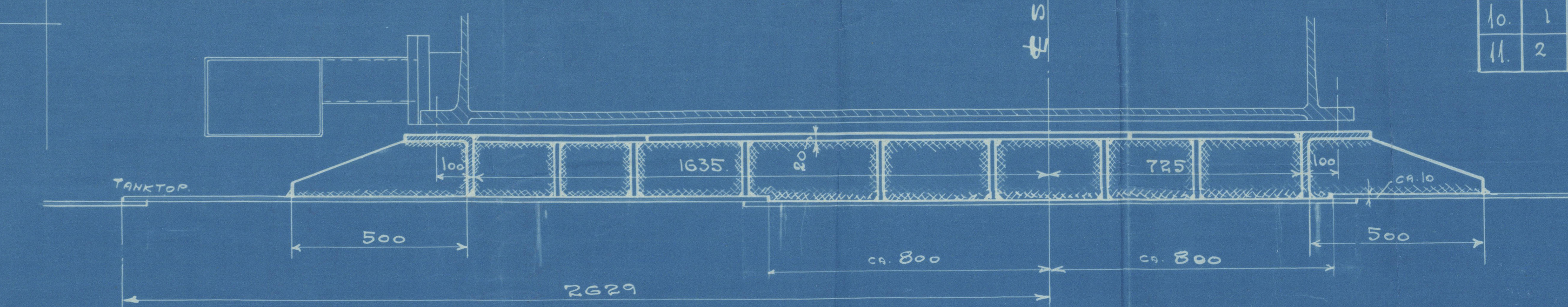


TURBIN HUS FLENS SET OVENFRA.

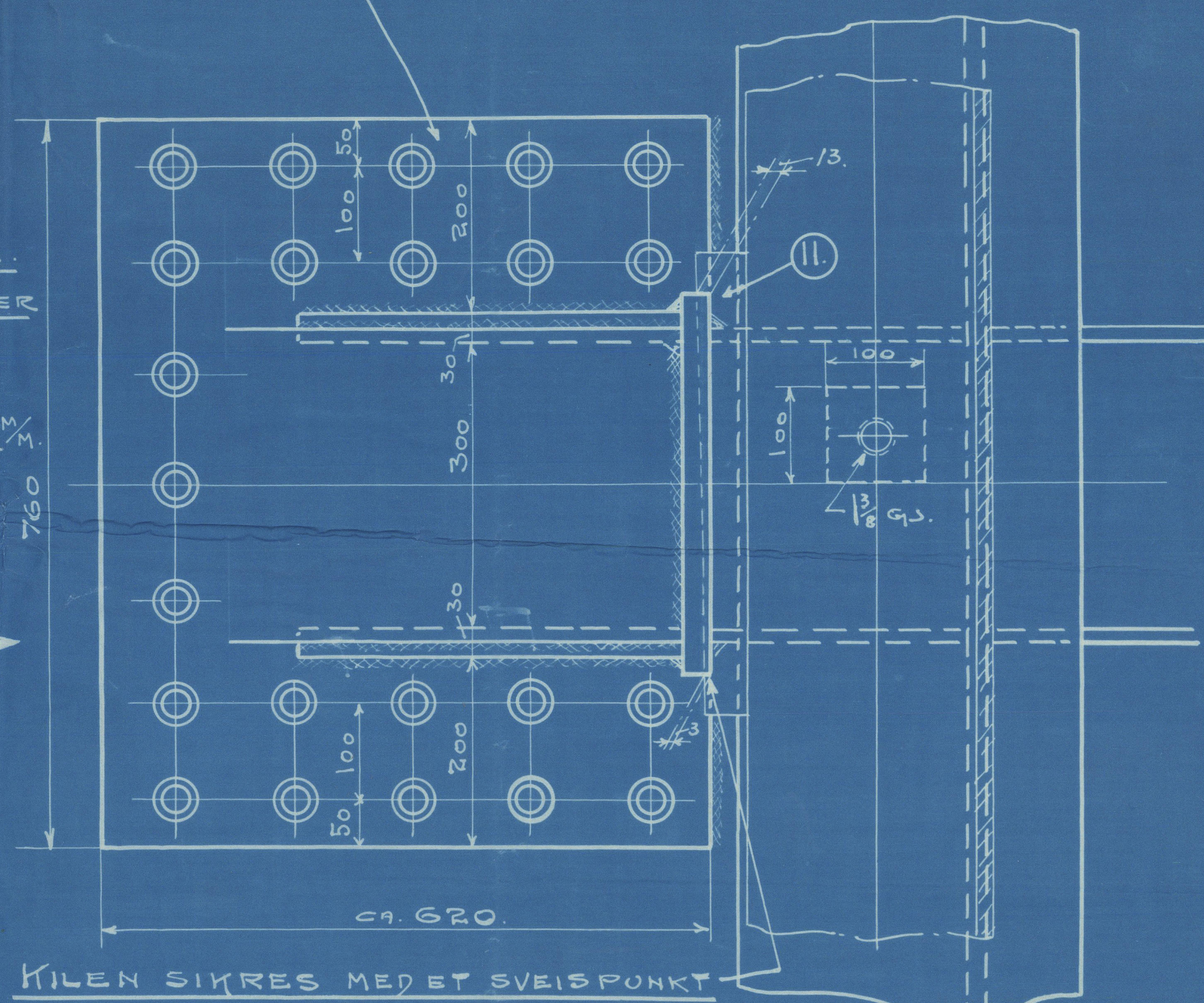
GIRDERS IN WAY OF DOBBEL BOTTOM AS SHOWN IN RED. SOLID FLOORS ON EVERY FRAME FROM FRAME 64 AND FORWARD.

NYLANDS VERKSTED
OSLO

25/3/35



23 STK 28 M. Ø NAGLER. NAGLENE ANBRINGS EFTER PÅSSEN OMBØY. HVIS MULIG HOLDES EN NAGLEAVSTAND = MINST 100 M. KLINKINGEN MÅ UTFØRES OMFORSGFULT. TANKTOPPEN UNDER THRUST-BRACKETEN FORSTERKES.



KILEN SIKRES MED ET SVEISFUNKT

STYKLISTE.						
Pos. Nr.	Benævnelse	Material	Dimen- sion	Vekt	Model Nr.	Anmerking
1	14	MELLEMLEG.	STØPEJERN	250x90		
2	11	—	—	130x90		
3	1	—	—	250x90		
4	3	—	—	130x90		
5	2	PINNESKR.	NØ	1 3/8" x 165		
6	23	—	—	1 3/8" x 160		
7	4	PASS SKR.	—	38 x 160		
8	56	MUTTERE.	—	1 3/8"		LAGEVØRE.
9	1	THRUST BRACKET	S.M.			FOROVER.
10	1	—	—			ØTEROVER.
11	2	KILER.	—	54x46 x 480		

1	2/100	3/4 CUBANO.		20 2 35
1	2/130	3/4 TROUBADOUR.		20 2 35
1	2/140	3/4 TROUBADOUR.		20 2 35
ANTAL	ORDRE	ANVENDT	ANMERKNING.	DATO.
SET.	Nr.	FOR.		

FUNDAMENT FOR TURBIN.

THRUST BRACKETTER.

SKALA=1:10 & 1:5.

NYLANDS VERKSTED
OSLO 20.2.35

TEGNET.	TRACET.	EFTERSETT.	
	S. Heier		

2.9205.

Y. Thode
S. S. Thode Fagelund
Osl. reg. No. 45744

Dr. Turbine & Thrust
Access.

W222-0156



© 2020

Lloyd's Register
Foundation