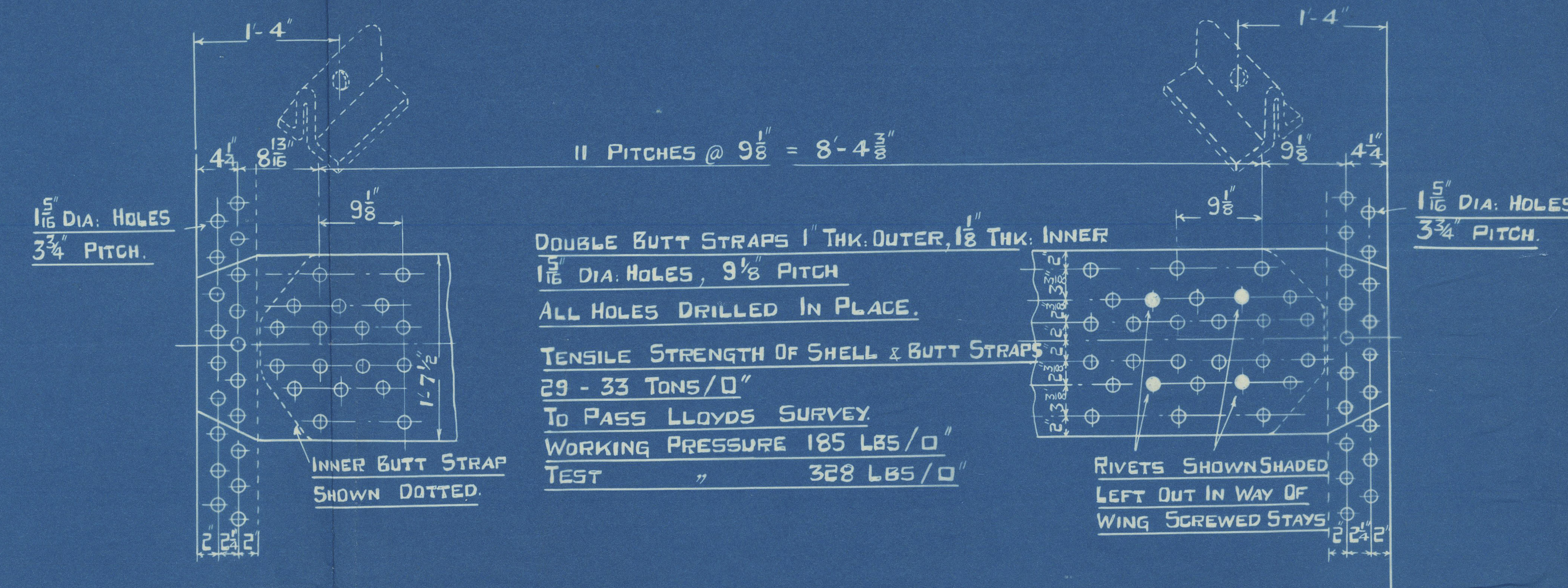
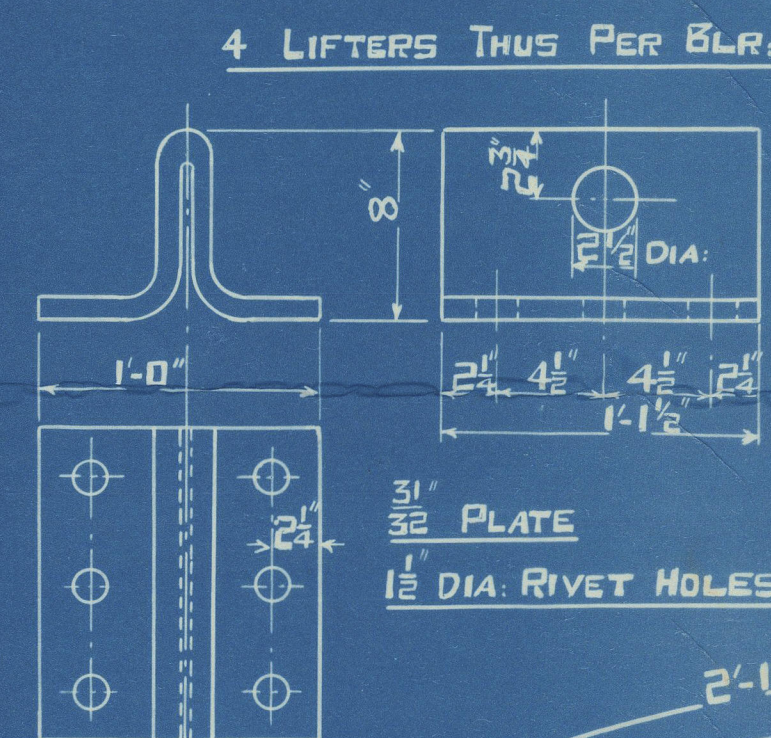


BOILER.

$$\frac{S_{\text{HELL}}}{2.75 \times 186} = \frac{(40\frac{1}{2} - 2) \times 29 \times 85.6\%}{2.75 \times 186} = 186.8 \text{ LBS}$$


PARTICULARS FOR ONE BOILER			3 BOILERS
HEATING SURFACE	TUBES	= 2100 sq	6300 sq
"	" BACKS	= 82 "	246 "
"	" BK TUBE PLATE	= 56 "	168 "
"	" TOP & SIDES	= 158 "	474 "
"	" FURNACES	= 161 "	483 "
"	" TOTAL	= 2556 "	7668 "
GRATE AREA	5'-6" BAR	= 633	190 "
AREA	THRO' TUBES	= 11-65	34-95 "

TESTS OF MATERIAL			
SHELL PLATES	29-33 TONS		
BUTT STRAPS	"	"	"
GIRDERS	"	"	"
MANHOLE DOORS	"	"	"
ALL COMB. CH. & FLANGING PLATES	26-30	"	"
FURNACES	"	"	"
SCREWED STAYS	"	"	"
LONGITUDINAL STAYS	28-32	"	"

North Eastern Marine
Engineering Co. Ltd

Wallend.

Replace Boilers. C. 2891

S.S. Thode Fagelund.

185 lbs

NEWCASTLE ON TYNE.

Report No. 95396.

No 718
LLOYDS TEST

328 LBS

WP 185 LBS

31-5-37. J.E.S.

W222-0085



© 2020

Lloyd's Register
Foundation