

off

S/T. RYLSTON SHELL EXPANSION CRUISER STERN

SCALE $\frac{1}{4} = 1$ FOOT.

BUTTS OF NEW PORTION OF BULWARK
TO BE ARRANGED ON SHIP & PLATES
TO BE TAKEN FROM STOCK.

EXISTING STERNHOUSE TO BE
EXTENDED AFT TO CONNECT TO
NEW BULWARKS (SEE SEPARATE
PLAN).

TREBLE RIVETED BUTTSTRAP
G/1 10'-0" X SKETCH

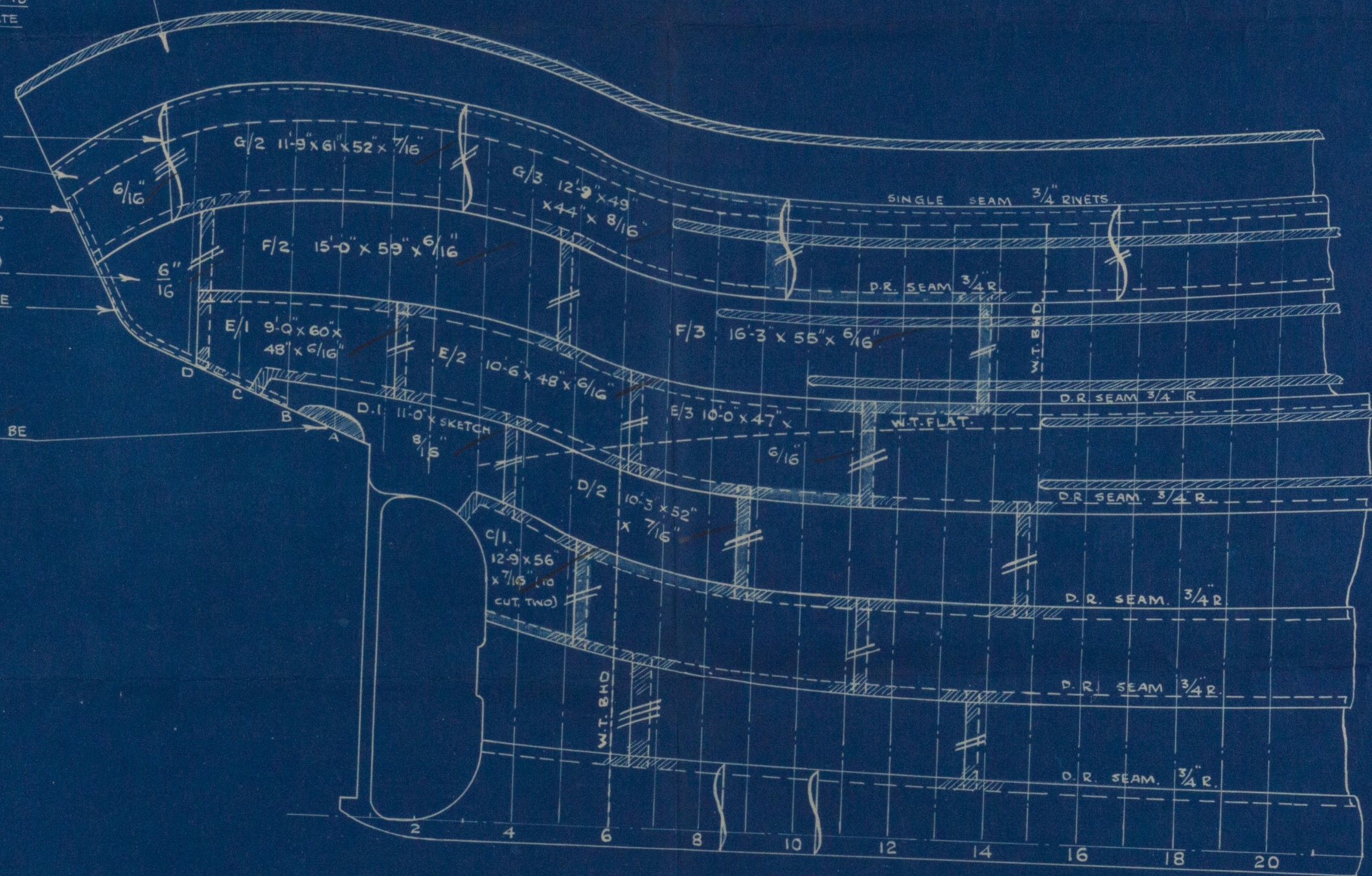
SHELL PLATES BUTT DOWN
CENTRE LINE WITH S.R. STRAP
INSIDE

F/1 13'-0" X SKETCH (TO CUT TWO)

4" X 4" X $\frac{1}{2}$ " STERN SHAPE ANGLE
TO FORM INSIDE STRAP.

HOLE FOR RUDDER STOCK TO BE
LINED OFF AT SHIP & TO BE
APPROVED.

*double shape
on expansion
skeleton
assembly*



H IN.
G OUT.
F IN.
E OUT.
D IN.
C OUT.
B IN.
A OUT.

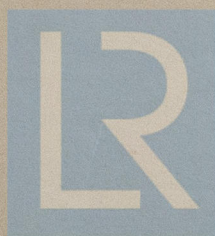


Copyright 2020
Royal Naval School of Design
1421-0010

ST. "RYLSTON"

Shell Expansion Cruiser Stern

Indb. report No. 16530.



© 2020

Lloyd's Register
Foundation

W221-0025