

M.S. "STORSTEN". JOB N^o
MODIFICATION TO MAIN DECK STRINGER.
SCALE :- 1/4" = ONE FOOT.

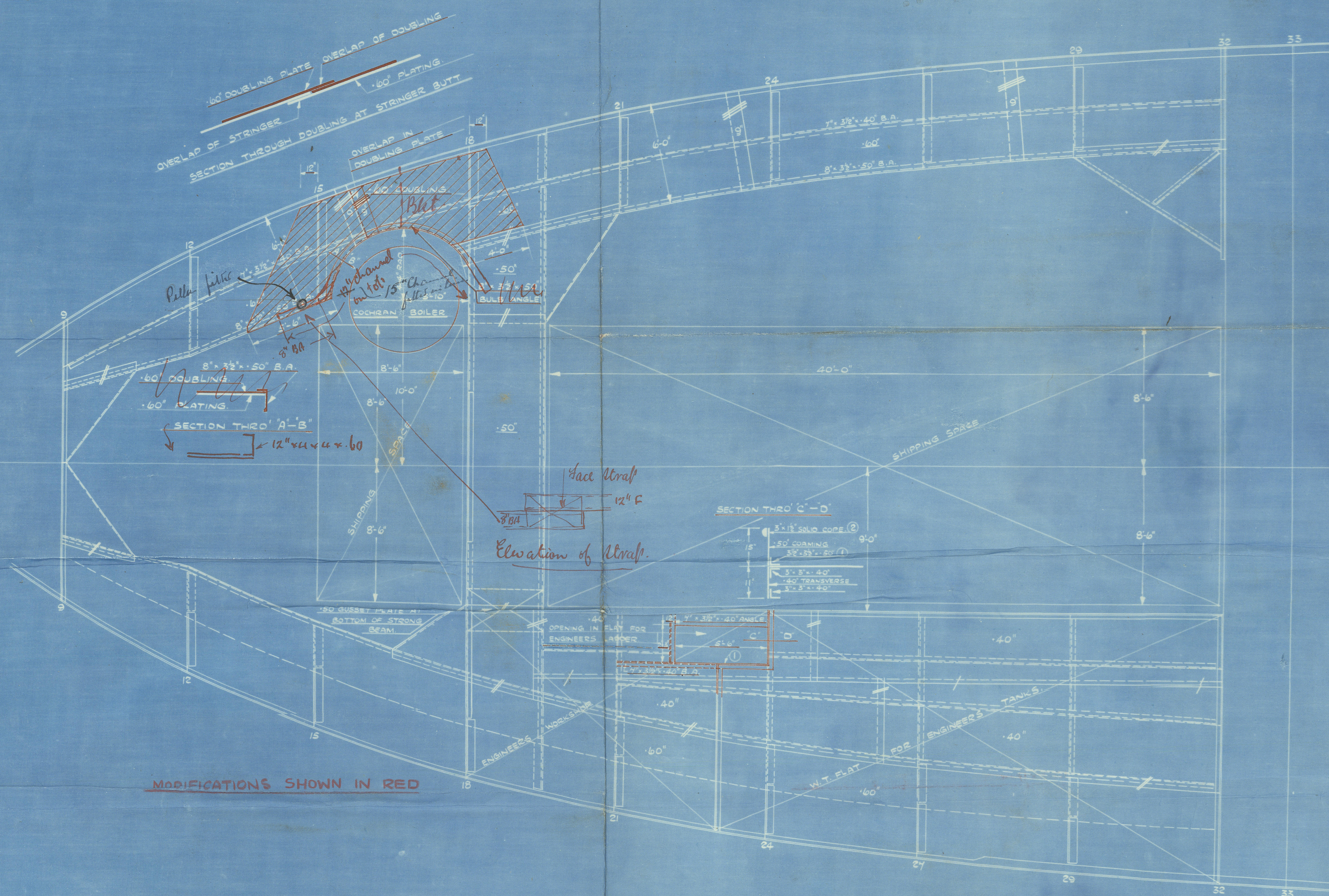
W.J. CARLISLE

ENGINEERS 15/12/27
 LLOYDS 24.1-28 (3) MAIN DECK STRINGER

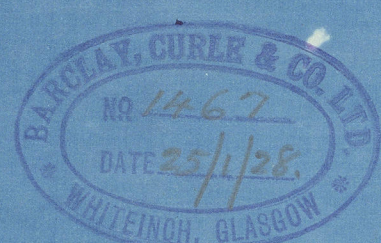
MARK	N ^o	LENGTH	BREADTH	THIN	REMARKS
M.D.					ADDITIONAL STEEL PLATES
1	1	3'-0"	15"	.50	COAMING MAIN DECK
2	1	5'-0"	33"	.25	CASING TOP
3	1	5'-0"	33"	.32	CASING SIDE POST

MARK	N ^o	LENGTH	SECTION	THIN	REMARKS
M.D.					ADDITIONAL STEEL ANGLES
1	1	8'-6"	3 1/2" x 3 1/2"	.50	MIN. DECK
2	1	4'-0"	3" x 12"		SOLID CORNER
3	1	8'-9"	3 1/2" x 5"	.50	CASING TOP
4	1	12'-0"	3" x 3"		SIDE POST
5	1	5'-0"	3"		FLAT CORNER

PLAN OF MAIN DECK



MODIFICATIONS SHOWN IN RED



APPROVED
 LLOYDS REGISTER OF SHIPPING
 Management in 1928
 DATE 30.1.28

M/V FORSTEN.

MODIFICATION TO MAIN DK STRINGER

GLASGOW REPORT No 48013



© 2019

Lloyd's Register
Foundation

W219-0222