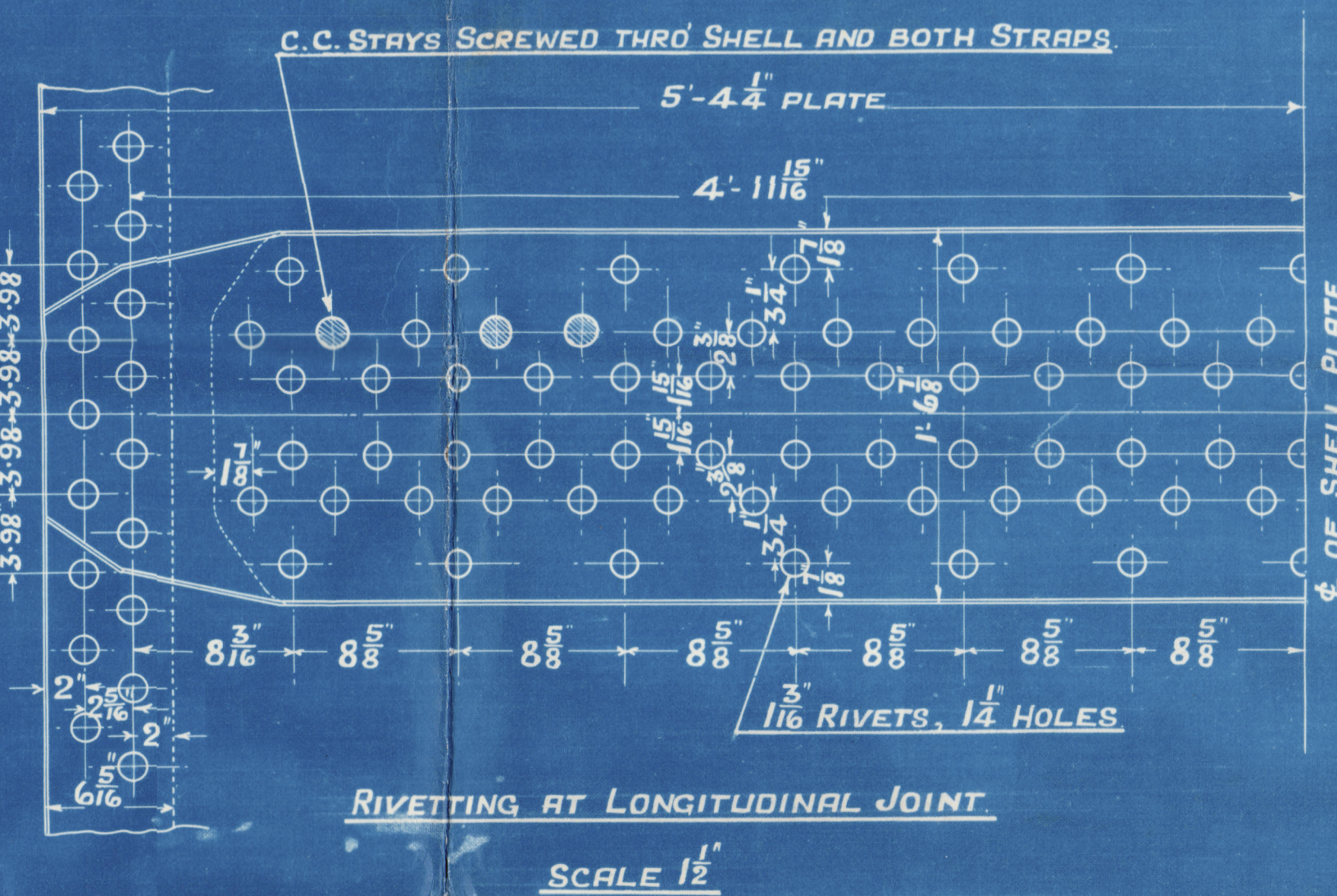




<u>PARTICULARS</u>		
<u>ONE BOILER</u>		
HEATING SURFACE IN TUBES		1772 $\frac{1}{2}$
" " " 3 COMB. CHS.		248 "
" " " 3 FURNACES		157 "
" " TOTAL		2177 "
GRATE SURFACE (5' 0" BARS. HOWDEN)		50
AREA THROUGH TUBES		8-05 "
RATIO $\frac{\text{HEATING SURFACE}}{\text{GRATE SURFACE}}$	=	432 $\frac{1}{2}$ "
STEAM SPACE	CUB. FEET.	382.

## FRONT AND BACK CIRCULAR SEAMS.

1"  $\frac{1}{4}$  RIVETS,  $1\frac{5}{16}$  HOLES, 136 PITCHES IN CIRCUMF.



INNER BUTT STRAP  $1\frac{1}{32}$ " THICK  
OUTER " " 1" "

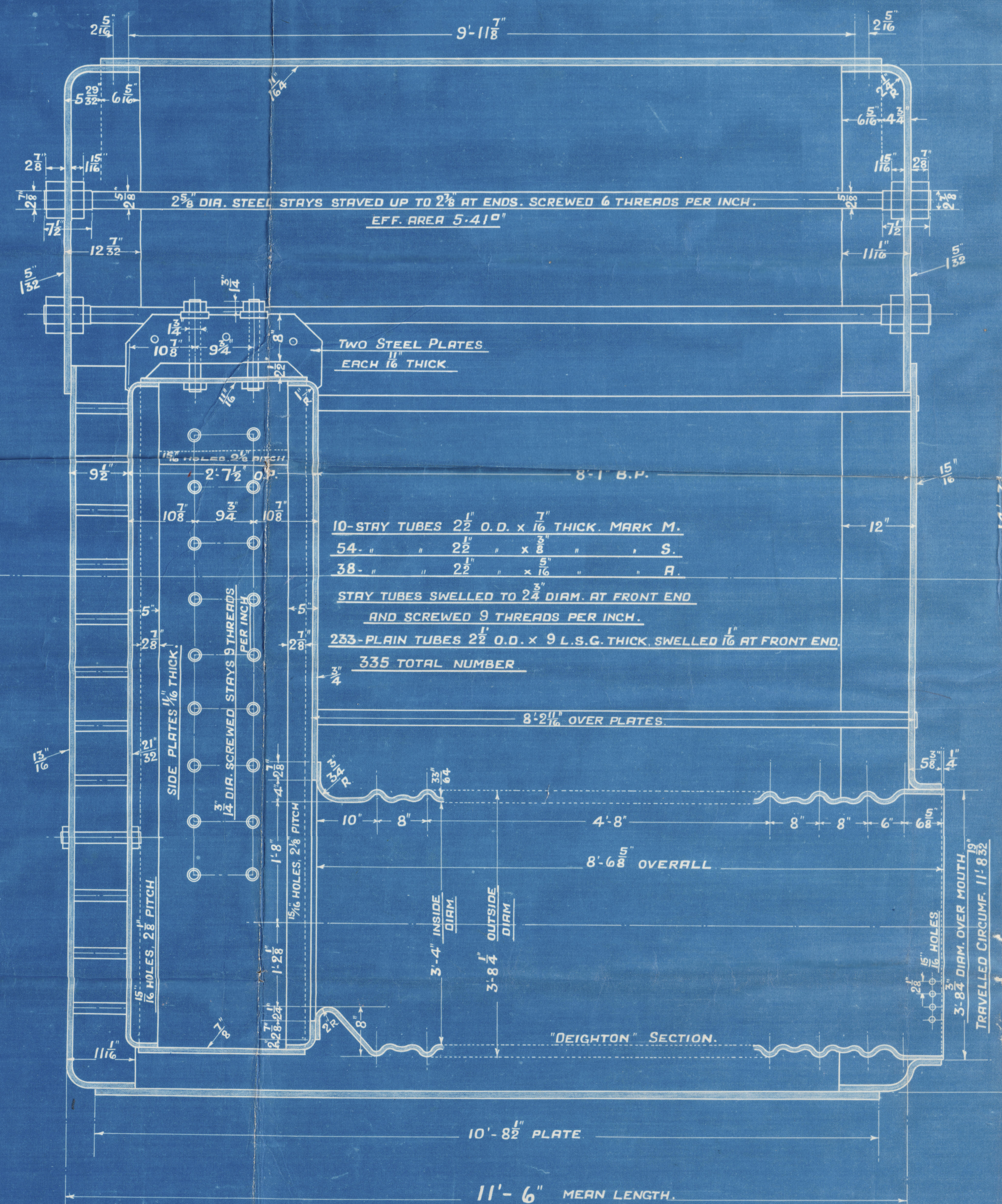
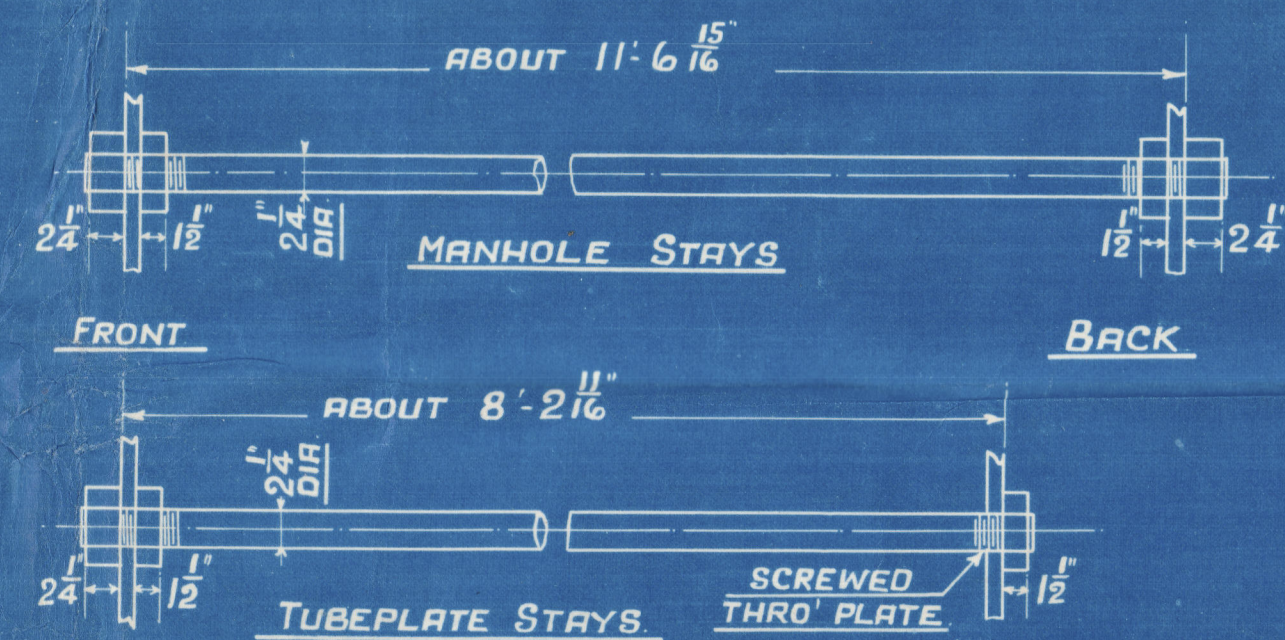
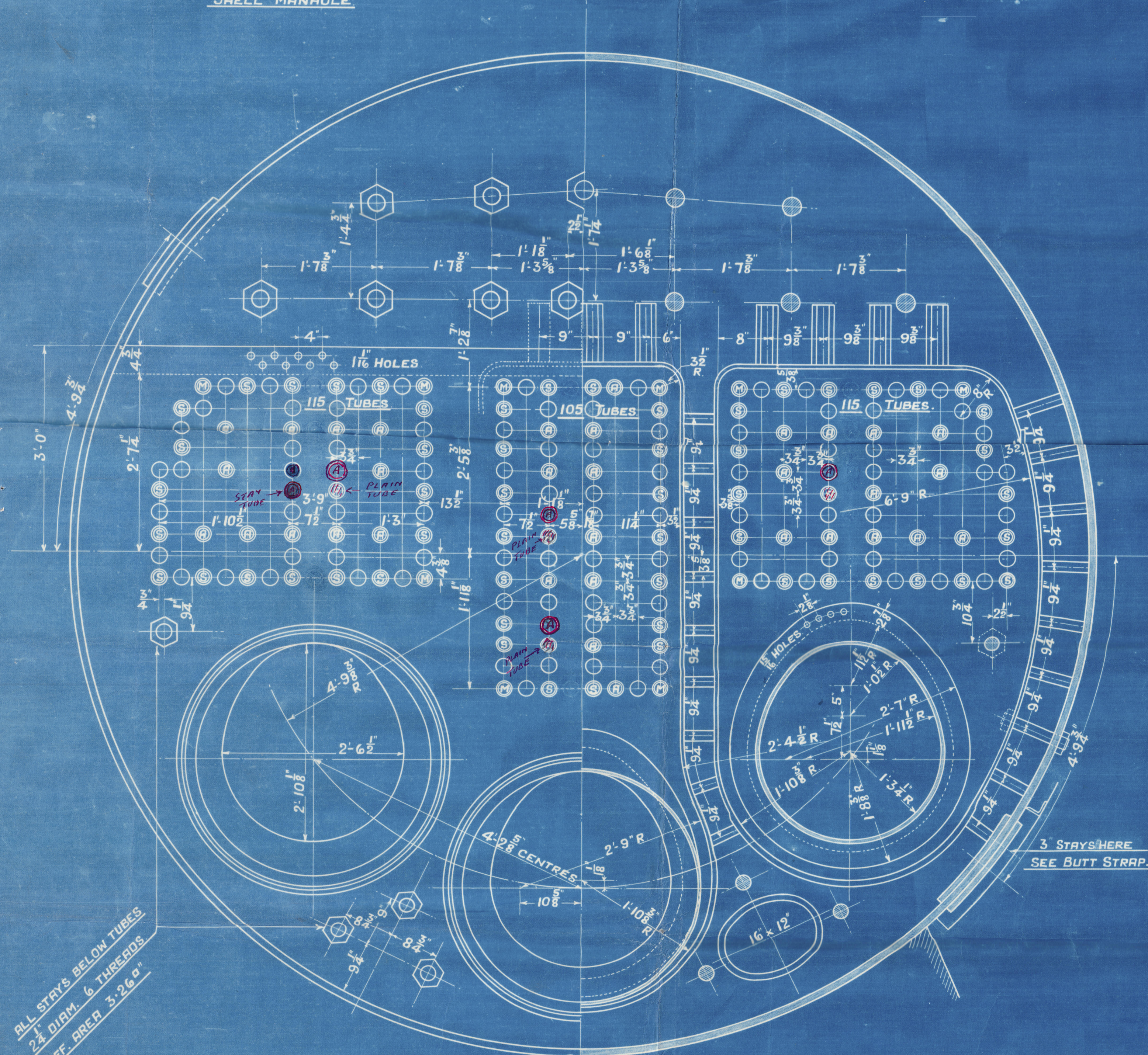
PLATE 85.5%  
RIVETS 93.3%

## TENSILE STRENGTH OF MATERIALS

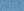
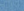

SHELL PLATES, BUTT STRAPS AND COMB. CH GIRDERS	28 TO 32 TONS
OTHER PLATES	26 TO 30 "
FURNACES	26 TO 30 "
LONGITUDINAL STAYS	28 TO 32 "
COMB. CH. SCREWED STAYS	26 TO 30 "
RIVET BARS	26 TO 30 "

TUBES IRON

UNDER LLOYDS SURVEY FOR A WORKING  
PRESSURE OF 180 LBS. PER SQ. IN.  
HYDRAULIC TEST PRESSURE 320 LBS. PER SQ. IN.



SECTION THROUGH  
END MANHOLES.

MARK	DIAM.	THREADS PER INCH	EFF. AREA	DEPTH OF NUTS.
	2"	9	2.71 sq"	1"
	1 3/4"	9	2.03 sq"	7/8"
	1 5/8"	9	1.73 sq"	7/8"

### ALL TO HAVE NUTS AT BOTH ENDS



**Nº 709M**  
**MAIN BOILER**

3-0FF

SCALE: 1" = 1 FOOT.

J.D. 25/12/24  
NRB  
J.D. RLW

© 2019  
W218-0172  
Lloyd's Register  
Foundation



GLASGOW

W & W. HENDERSON & CO. L<sup>td</sup>

(3) BOILERS N<sup>o</sup> 709M

WP-180 LBS

W & W HENDERSON'S & S<sup>on</sup> N<sup>o</sup> 709M

AMENDED PLAN

Starboard & centre boilers

N<sup>o</sup> 16908

LLOYD'S TEST

320 LBS

WP-180 LBS

L.C.D. 17-8-25

Port boiler

N<sup>o</sup> 16924

LLOYD'S TEST

320 LBS

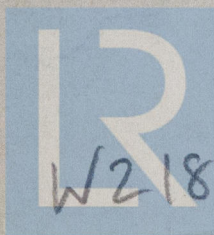
WP-180 LBS

L.C.D. 8-9-25

Star of Suez

ex  
Marthara

GLASGOW REPORT N<sup>o</sup> 45350



© 2019

Lloyd's Register  
Foundation