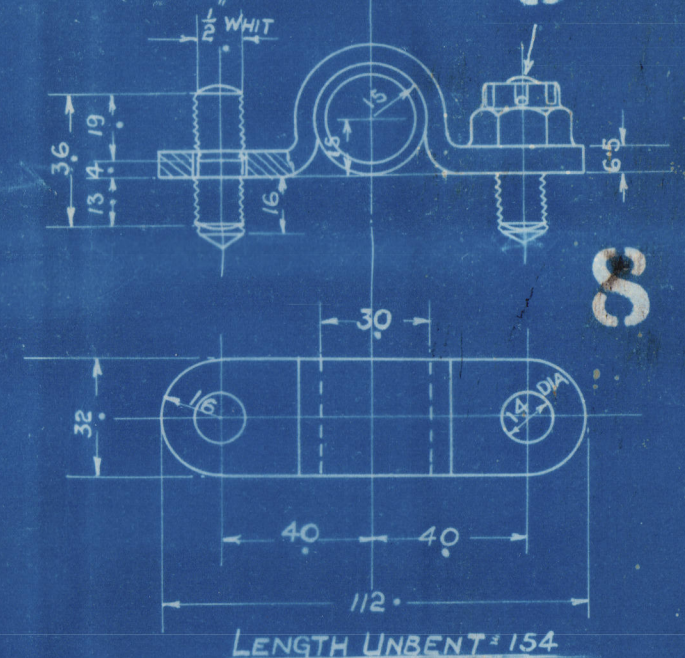


CRANKPIN OIL OUTLET CUT AWAY
THUS, TO ALLOW FREE PASSAGE

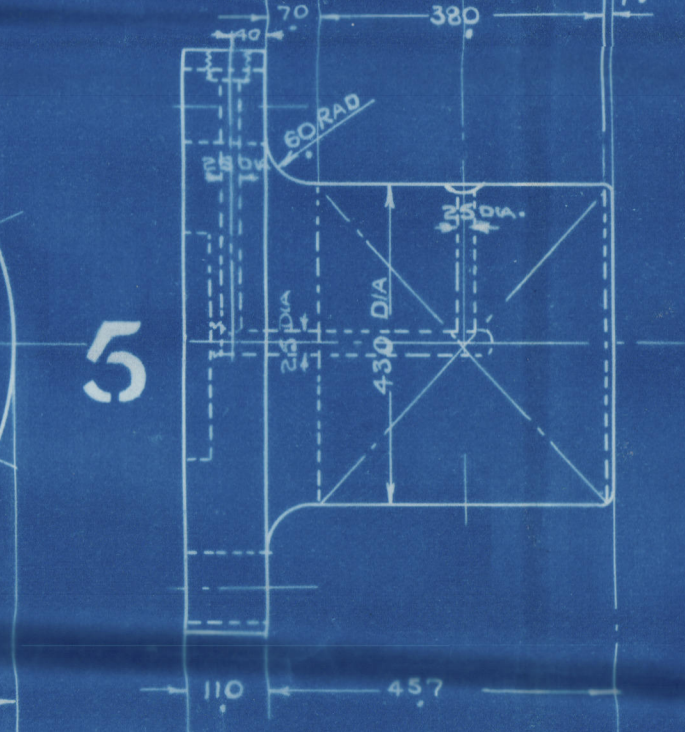
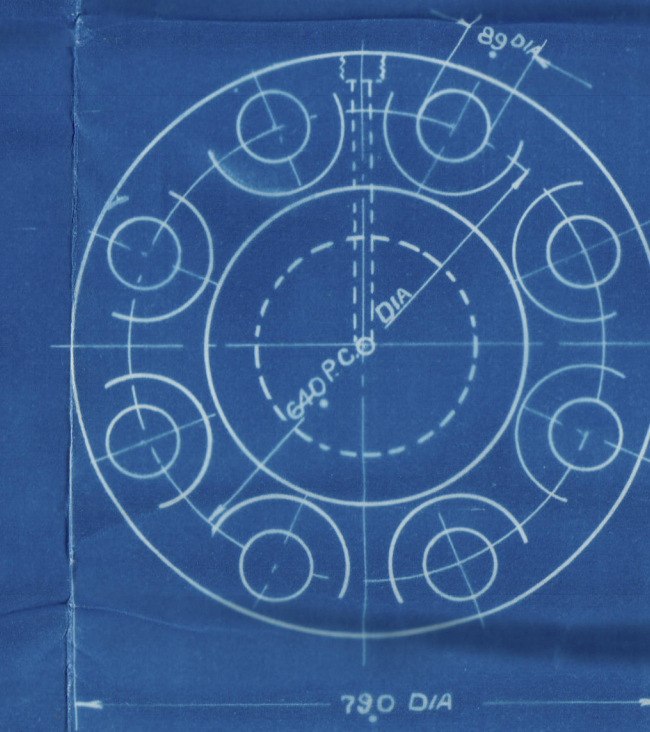
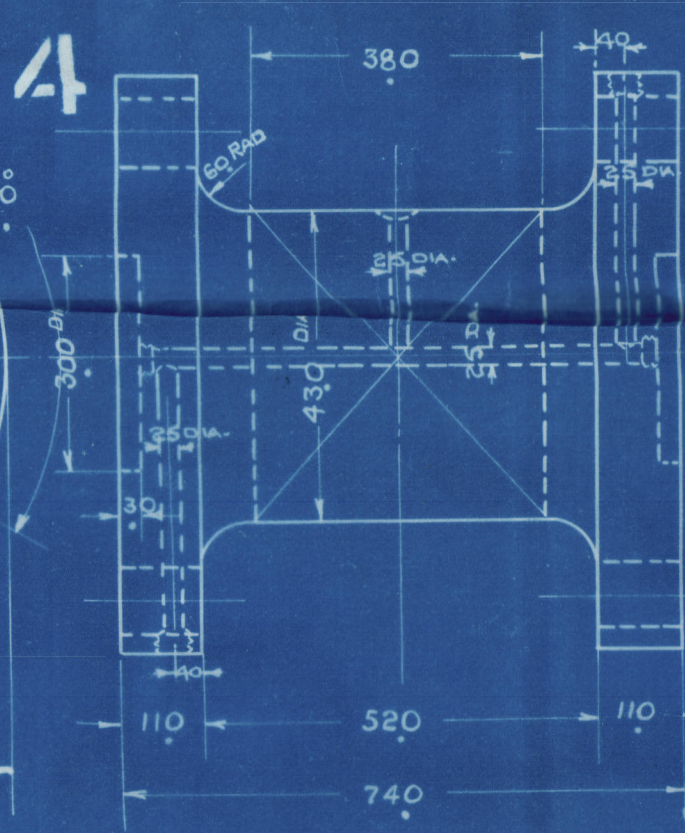
SEATING FOR 1" LP UNION.

SEATING FOR 1" L.P. SOCKET COUPLING.

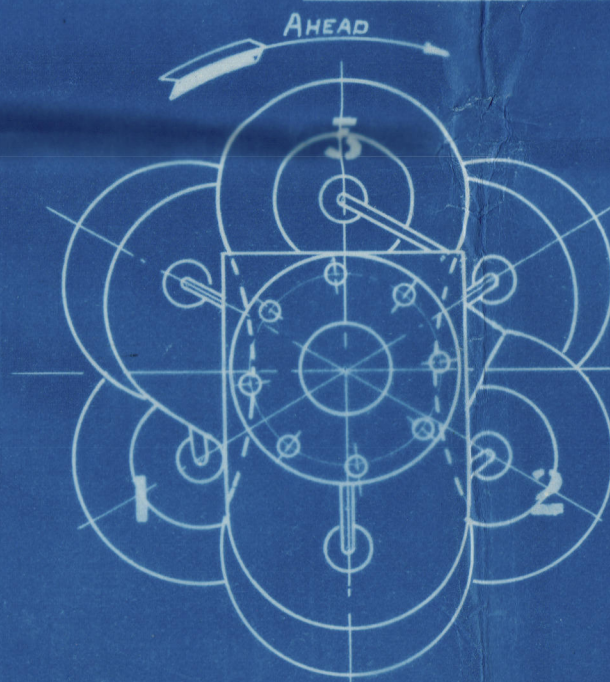
FULL SIZE DETAIL OF DOWEL PIN



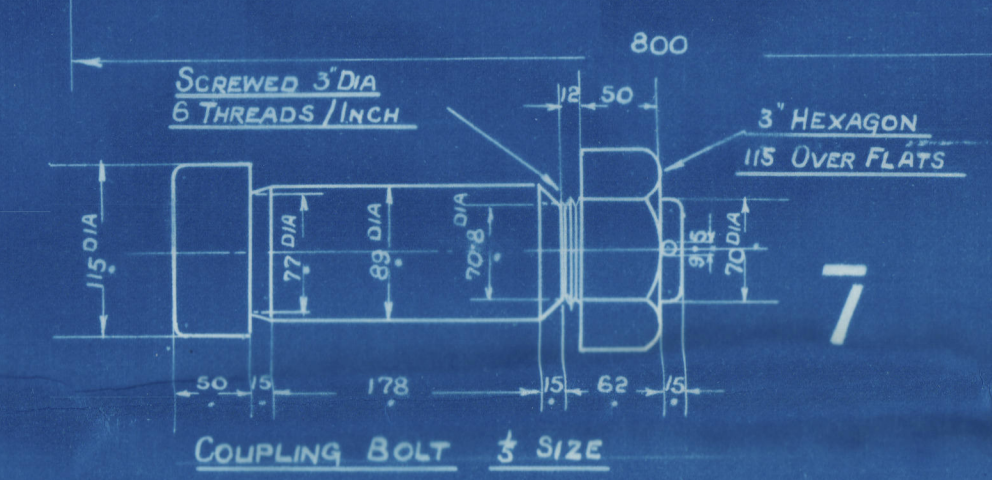
NOTES & ALTERATIONS.



MAIN JOURNAL OIL INLET CUT AWAY
THUS TO ALLOW FREE PASSAGE.



VIEW LOOKING FOR⁵



HOLES TO BE DRILLED IN ONE FLANGE 120° IN ADVANCE OF OTHER FLANGE TO SUIT SEQUENCE OF CRANKS.

PART NO.	DESCRIPTION	N ^O OFF	MAT ^L	REMARKS
1	CENTRE PIN	3	I. S.	
2	CENTRE WEB	6	I. S.	
3	SIDE PIN & WEB	6	I. S.	
4	INTERMEDIATE SHAFT	3	I. S.	
5	FORD END JOURNAL	1	I. S.	
6	LOCKING PINS	24	M. S.	
7	COUPLING BOLT, NUT, & SPLIT PIN	48	I. S.	
8	PIPE CLIP	6	M. S.	
9	1/2" WAT. STUDS & CASTLE NUTS	12	M. S.	
10	PIPE & BORE	6	STEEL	
11	PIPE 3/8" BORE	6	STEEL	
12	PLUGS 7/8" B.S.P.	6	M. S.	
13	1 L.P. UNION	6	BRASS	
14	1 L.P. SOCKET COUPLING	18	BRASS	
15	INTERMEDIATE SPARE SHAFT	1	I. S.	

FOR TOTAL N^O OF SEE FOR SHEETS.

FOR LIMITS ON DIMENSIONS SEE SEPARATE SPECIFICATION.

CONTRACT N° ~~585~~ 153

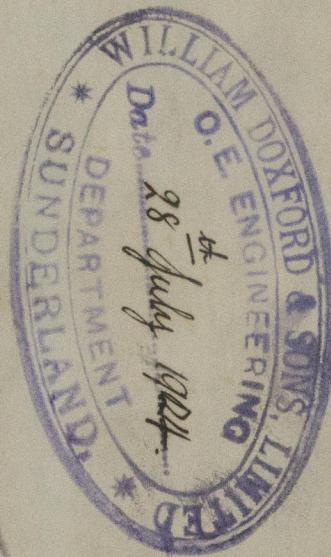
DOXFORD'S 153
FOR ~~583~~
J.L. THOMPSON 554
CRANK SHAFT

— " — 8.8.24
Letter to Duxford
approving. 9-8.24
Hagthorn. to come
14.11.24

M.S. SILVERAY

SUNDERLAND RPT. NO 29100.

W217-0074



© 2019

Lloyd's Register
Foundation