

PRINCIPAL DIMENSIONS.		
LENGTH B.P.	395'0"	
BREADTH EXTREME	57'0"	
DO MOULDED	56'8"	
DEPTH MLD. SHELTER DK.	35'1 1/2"	
DO DO SECOND DK.	25'10"	
DEPTHS TO LENGTH SHELTER DK.	11'18"	
DO DO BRIDGE DK.	9'11 1/2"	
ERECTIONS ABOUT 60% OF LENGTH.		

SINGLE SCREW MOTOR VESSEL.

"SILVERAY"

LLOYDS 100 A.I. CLASS.

COMPLETE SUPERSTRUCTURE TYPE.

WITH POOP, BRIDGE & TOPGALLANT FORECASTLE.

SCALE 1/2" = 1 FOOT.

NUMERALS.

D. FOR NUMERALS	25.83 + 9.00	33.83
1 st NUMERAL	33.83 + 395	133.60
2 nd DO	(33.83 + 56.10) 395	357.60

EQUIPMENT NUMERALS.

(25.83 + 9.5 + 56.10) 395	363.51
POOP 25.92 + 8 + 15	161
BRIDGE 172.83 + 8 + 15	1037
FORECASTLE 38.05 + 8 + 15	223
DECKHOUSE 20.87 + 15 + 5	18
EQUIPMENT N ^o	37855.

FORGINGS.

STERN FRAME	10 1/2" x 1 1/4"
RUDDER POST	9" x 1 1/4"
STEM	9 1/4" x 2 1/2"

INTERMEDIATE FRAMES IN BRIDGE, 1 1/2" x 3/4" x 3/4" ANGLE.

POOP SIDE PLATING	38
BRIDGE DO.	52
FORECASTLE DO	42

POOP & POLE SEAMS & BUTTS SINGLE RIVETED.
BRIDGE SEAMS DOUBLE RIVETED.
BRIDGE BUTTS TREBLE DO.

SHEERSTRAKE 66 TO 146.

5" IN WAY OF BRIDGE
QUAD. RIV. OVERLAP BUTTS CLEAR OF BRIDGE
TO 1/2 LTH., TREBLE IN WAY OF BRIDGE & AT ENDS
OF VESSEL. SHEERSTRAKE INCREASED 50% IN
THICKNESS AT ENDS OF BRIDGE.

STRAKE BELOW SHEERSTRAKE 62 TO 146.

5" IN WAY OF BRIDGE. QUAD. RIV. OVERLAP BUTTS
CLEAR OF BRIDGE, TO 1/2 LTH. TREBLE IN WAY OF BRIDGE
AND AT ENDS OF VESSEL.

SIDE SHELL 5" TO 146.

TREBLE RIVETED OVERLAP BUTTS.

BOSS PLATES 65.

BILGE KEEL 12 DEEP.

BULB 11" x 50
ANGLE 5.5 x 50.

POOP STRINGER 35 x 36 SINGLE RIV. BUTTS. DECK 26. SINGLE RIV. BUTTS
BDGE DO 58 x 140 TREBLE DO DO 36 DOUBLE DO
FPLE DO 35 x 36 SINGLE DO DO 30 WOOD SHEATHED SINGLE RIV. BUTTS

5 x 5 x 140 BRIDGE DECK.
3 x 3 x 36 POOP & FPLE DECKS.
BRIDGE DK. 51 x 0
KNEES 21 x 140.
BRIDGE DK BEAMS 11 x 3 x 36 W. 140 F.
BEAMS IN WAY OF HATCHWAYS 11 x 3 x 36 W. 140 F.

1 x 3 x 36 B.A. ON ALT. FRAMES AT HATCH ENDS & FOR 1/2 FRAMES AT EACH END OF BRIDGE.
STRINGER PLATE 58 x 58 TO 39 x 140 TREBLE RIV. OVERLAP BUTTS.
11 x 1 x 140 UNDER BRIDGE 3" UNDER POOP & FPLE. DOUBLE RIV. OVERLAP BUTTS.
INCREASED AT ENDS OF BRIDGE 50%.

3 x 3 x 140 TO 34. 6 x 6 x 50 IN WELLS TO 1/2 LTH. 50 BEYOND 1/2 LTH.
3 x 3 x 140 TO 34.
SHELTER DK. 55 x 1
INTERCOSTAL FOR 2 SPACES AT PILLAR HEADS.
DOUBLE 5 x 3 x 140.

SHELTER DK BEAMS. SEE PROFILE
KNEES 146
UNDER BRIDGE 146
WEB OVER 1405. NO 37.53.63.85 & 140.
3" PLATE WITH FLANGE ON FACE. 3 x 3 x 140 SINGLE ANGLE TO DECK.

1 x 3 x 36 B.A. EVERY FRAME.
STRAKE ANGLE 3 x 3/2 x 46 ON 1/2 SHEERSTRAKE & 1/2
STRINGER PLATE 14 x 140 TO 35 x 36. 38 UNDER BRIDGE.
DOUBLE RIV. OVERLAP BUTTS.

3 x 3 x 140 TO 34 (SEE PROFILE)
3 x 3 x 140 TO 34.
2" DECK 150 x 0
KNEES 148
SECOND DK. BEAMS SEE PROFILE

MAIN FRAMES 30" APART, 21" FOR 2 OF 3/5 LTH. TO 10% ABAFT COLLISION BHD.
12 x 3 x 36 x 140 W. 50 F. CHANNELS. IN PEAKS 21" APART 11 x 3 x 36 B.A.
FRAMES BETWEEN COLLISION BHD. & 10% ABAFT SAME 21" APART 12 x 4 x 140 W. 65 F.
WITH SIDE STRINGERS AS PER PROFILE.

ALL MAIN FRAMES TO EXTEND TO SECOND DECK.
RIVETS THROUGH FRAMES & SHELL 6 DIAS. APART WHERE SPACING 30".
5" DIAS. APART IN BOTTOM FRAMES FOR 2 OF 3/5 LTH. IN PEAKS & DEEP TANKS.
6 DIAS. IN FRAME LEGS BELOW SECOND DECK. 5" DIAS. FOR 10% LTH. ABAFT COLLISION BHD.
6 DIAS. APART IN FRAMES ABOVE PEAK TANKS. & IN FRAMES ABOVE SECOND DECK. WHERE
SPACING IS 21" & 21". POOP, BRIDGE & FPLE. 6 DIAS. APART.

MARGIN PLATE 52
TREBLE RIV. OVERLAP BUTTS.
BRACKETS OUTSIDE TANK 140
BOT. CONNECTION TO MARGIN 3 x 3 x 140 SINGLE RIVETS 1/8 DIA.
AT FORE END FOR 10% LTH. ABAFT COLLISION BHD. 6 x 6 x 140
15 RIVETS 1/8 DIA.

QUSSET ANGLES EVERY FRAME FORE & AFT 3 x 3 x 140
8 RIVETS 1/8 DIA. 10 RIVETS AT PANTING FRAMES IN ADDITION TO
6 x 6 x 140 CONNECTION TO TANK SIDE. 14 PLATES IN DEEP TANKS.

TANK WEBS ON EVERY FRAME IN ENGINE ROOM. & FOR 2 OF 3/5 LTH. ELSEWHERE ON EVERY 3rd. 35"
31" AT FORE END WHERE SPACING 21". WITH VERTICAL STIFFENERS AS SHOWN BELOW.
INTERCOSTAL GIRDERS, 1 EACH SIDE 140. ADDITIONAL GIRDERS UNDER ENGINES, THRUST BLOCK & FOR 2
OF 3/5 LTH. DOUBLE ANGLES ON UPPER EDGE OF FLOORS UNDER ENGINES & THRUST BLOCK 6 x 3 x 140
WITH SINGLE 5 x 5 x 140 ON GIRDERS. TANK ENDS & DIVISIONS 148 WITH 3 x 3 x 140 VERTICAL STIFFENERS
ABOUT 21" APART. TANK TOP 148 TO 35. 31" WHERE 21" SPACING AT FORE END 50 IN ENGINE ROOM.
CEILING UNDER HATCHES AND OVER BILGES. TANK TOP SEAMS & BUTTS DOUBLE RIVETED.

5 x 5 x 50 FOR PILLARS 16" DIA. & ABOVE WITH 100" DOUBLING.
3 x 3 x 140. 6 x 3 x 140 ANGLE BACK BAR UNDER PILLARS
DOUBLING 115

5 x 5 x 50 FOR PILLARS 16" DIA. & ABOVE WITH 100" DOUBLING.
3 x 3 x 140. 6 x 3 x 140 ANGLE BACK BAR UNDER PILLARS
DOUBLING 115

5 x 5 x 50 FOR PILLARS 16" DIA. & ABOVE WITH 100" DOUBLING.
3 x 3 x 140. 6 x 3 x 140 ANGLE BACK BAR UNDER PILLARS
DOUBLING 115

5 x 5 x 50 FOR PILLARS 16" DIA. & ABOVE WITH 100" DOUBLING.
3 x 3 x 140. 6 x 3 x 140 ANGLE BACK BAR UNDER PILLARS
DOUBLING 115

5 x 5 x 50 FOR PILLARS 16" DIA. & ABOVE WITH 100" DOUBLING.
3 x 3 x 140. 6 x 3 x 140 ANGLE BACK BAR UNDER PILLARS
DOUBLING 115

5 x 5 x 50 FOR PILLARS 16" DIA. & ABOVE WITH 100" DOUBLING.
3 x 3 x 140. 6 x 3 x 140 ANGLE BACK BAR UNDER PILLARS
DOUBLING 115

5 x 5 x 50 FOR PILLARS 16" DIA. & ABOVE WITH 100" DOUBLING.
3 x 3 x 140. 6 x 3 x 140 ANGLE BACK BAR UNDER PILLARS
DOUBLING 115

5 x 5 x 50 FOR PILLARS 16" DIA. & ABOVE WITH 100" DOUBLING.
3 x 3 x 140. 6 x 3 x 140 ANGLE BACK BAR UNDER PILLARS
DOUBLING 115

5 x 5 x 50 FOR PILLARS 16" DIA. & ABOVE WITH 100" DOUBLING.
3 x 3 x 140. 6 x 3 x 140 ANGLE BACK BAR UNDER PILLARS
DOUBLING 115

5 x 5 x 50 FOR PILLARS 16" DIA. & ABOVE WITH 100" DOUBLING.
3 x 3 x 140. 6 x 3 x 140 ANGLE BACK BAR UNDER PILLARS
DOUBLING 115

5 x 5 x 50 FOR PILLARS 16" DIA. & ABOVE WITH 100" DOUBLING.
3 x 3 x 140. 6 x 3 x 140 ANGLE BACK BAR UNDER PILLARS
DOUBLING 115

5 x 5 x 50 FOR PILLARS 16" DIA. & ABOVE WITH 100" DOUBLING.
3 x 3 x 140. 6 x 3 x 140 ANGLE BACK BAR UNDER PILLARS
DOUBLING 115

5 x 5 x 50 FOR PILLARS 16" DIA. & ABOVE WITH 100" DOUBLING.
3 x 3 x 140. 6 x 3 x 140 ANGLE BACK BAR UNDER PILLARS
DOUBLING 115

5 x 5 x 50 FOR PILLARS 16" DIA. & ABOVE WITH 100" DOUBLING.
3 x 3 x 140. 6 x 3 x 140 ANGLE BACK BAR UNDER PILLARS
DOUBLING 115

5 x 5 x 50 FOR PILLARS 16" DIA. & ABOVE WITH 100" DOUBLING.
3 x 3 x 140. 6 x 3 x 140 ANGLE BACK BAR UNDER PILLARS
DOUBLING 115

5 x 5 x 50 FOR PILLARS 16" DIA. & ABOVE WITH 100" DOUBLING.
3 x 3 x 140. 6 x 3 x 140 ANGLE BACK BAR UNDER PILLARS
DOUBLING 115

1 x 3 x 140 B.A. AT SIDES ONLY
SINGLE RIV. LAP
COAMING 140
HATCHES 20 x 6
GIRDER AS PER PROFILE
INTERCOSTAL FOR 2 SPACES AT PILLAR HEADS
140 BRACKET AT HEAD OF EACH PILLAR
140 CAP PLATE DO
140 TRIPPING BATS ON GIRDER ON ALTERNATE FRAMES

1 x 3 x 140 B.A. AT SIDES ONLY
SINGLE RIV. LAP
COAMING 140
HATCHES 20 x 6
GIRDER AS PER PROFILE
INTERCOSTAL FOR 2 SPACES AT PILLAR HEADS
140 BRACKET AT HEAD OF EACH PILLAR
140 CAP PLATE DO
140 TRIPPING BATS ON GIRDER ON ALTERNATE FRAMES

1 x 3 x 140 B.A. AT SIDES ONLY
SINGLE RIV. LAP
COAMING 140
HATCHES 20 x 6
GIRDER AS PER PROFILE
INTERCOSTAL FOR 2 SPACES AT PILLAR HEADS
140 BRACKET AT HEAD OF EACH PILLAR
140 CAP PLATE DO
140 TRIPPING BATS ON GIRDER ON ALTERNATE FRAMES

1 x 3 x 140 B.A. AT SIDES ONLY
SINGLE RIV. LAP
COAMING 140
HATCHES 20 x 6
GIRDER AS PER PROFILE
INTERCOSTAL FOR 2 SPACES AT PILLAR HEADS
140 BRACKET AT HEAD OF EACH PILLAR
140 CAP PLATE DO
140 TRIPPING BATS ON GIRDER ON ALTERNATE FRAMES

1 x 3 x 140 B.A. AT SIDES ONLY
SINGLE RIV. LAP
COAMING 140
HATCHES 20 x 6
GIRDER AS PER PROFILE
INTERCOSTAL FOR 2 SPACES AT PILLAR HEADS
140 BRACKET AT HEAD OF EACH PILLAR
140 CAP PLATE DO
140 TRIPPING BATS ON GIRDER ON ALTERNATE FRAMES

1 x 3 x 140 B.A. AT SIDES ONLY
SINGLE RIV. LAP
COAMING 140
HATCHES 20 x 6
GIRDER AS PER PROFILE
INTERCOSTAL FOR 2 SPACES AT PILLAR HEADS
140 BRACKET AT HEAD OF EACH PILLAR
140 CAP PLATE DO
140 TRIPPING BATS ON GIRDER ON ALTERNATE FRAMES

1 x 3 x 140 B.A. AT SIDES ONLY
SINGLE RIV. LAP
COAMING 140
HATCHES 20 x 6
GIRDER AS PER PROFILE
INTERCOSTAL FOR 2 SPACES AT PILLAR HEADS
140 BRACKET AT HEAD OF EACH PILLAR
140 CAP PLATE DO
140 TRIPPING BATS ON GIRDER ON ALTERNATE FRAMES

1 x 3 x 140 B.A. AT SIDES ONLY
SINGLE RIV. LAP
COAMING 140
HATCHES 20 x 6
GIRDER AS PER PROFILE
INTERCOSTAL FOR 2 SPACES AT PILLAR HEADS
140 BRACKET AT HEAD OF EACH PILLAR
140 CAP PLATE DO
140 TRIPPING BATS ON GIRDER ON ALTERNATE FRAMES

1 x 3 x 140 B.A. AT SIDES ONLY
SINGLE RIV. LAP
COAMING 140
HATCHES 20 x 6
GIRDER AS PER PROFILE
INTERCOSTAL FOR 2 SPACES AT PILLAR HEADS
140 BRACKET AT HEAD OF EACH PILLAR
140 CAP PLATE DO
140 TRIPPING BATS ON GIRDER ON ALTERNATE FRAMES

1 x 3 x 140 B.A. AT SIDES ONLY
SINGLE RIV. LAP
COAMING 140
HATCHES 20 x 6
GIRDER AS PER PROFILE
INTERCOSTAL FOR 2 SPACES AT PILLAR HEADS
140 BRACKET AT HEAD OF EACH PILLAR
140 CAP PLATE DO
140 TRIPPING BATS ON GIRDER ON ALTERNATE FRAMES

1 x 3 x 140 B.A. AT SIDES ONLY
SINGLE RIV. LAP
COAMING 140
HATCHES 20 x 6
GIRDER AS PER PROFILE
INTERCOSTAL FOR 2 SPACES AT PILLAR HEADS
140 BRACKET AT HEAD OF EACH PILLAR
140 CAP PLATE DO
140 TRIPPING BATS ON GIRDER ON ALTERNATE FRAMES

1 x 3 x 140 B.A. AT SIDES ONLY
SINGLE RIV. LAP
COAMING 140
HATCHES 20 x 6
GIRDER AS PER PROFILE
INTERCOSTAL FOR 2 SPACES AT PILLAR HEADS
140 BRACKET AT HEAD OF EACH PILLAR
140 CAP PLATE DO
140 TRIPPING BATS ON GIRDER ON ALTERNATE FRAMES

1 x 3 x 140 B.A. AT SIDES ONLY
SINGLE RIV. LAP
COAMING 140
HATCHES 20 x 6
GIRDER AS PER PROFILE
INTERCOSTAL FOR 2 SPACES AT PILLAR HEADS
140 BRACKET AT HEAD OF EACH PILLAR
140 CAP PLATE DO
140 TRIPPING BATS ON GIRDER ON ALTERNATE FRAMES

1 x 3 x 140 B.A. AT SIDES ONLY
SINGLE RIV. LAP
COAMING 140
HATCHES 20 x 6
GIRDER AS PER PROFILE
INTERCOSTAL FOR 2 SPACES AT PILLAR HEADS
140 BRACKET AT HEAD OF EACH PILLAR
140 CAP PLATE DO
140 TRIPPING BATS ON GIRDER ON ALTERNATE FRAMES

1 x 3 x 140 B.A. AT SIDES ONLY
SINGLE RIV. LAP
COAMING 140
HATCHES 20 x 6
GIRDER AS PER PROFILE
INTERCOSTAL FOR 2 SPACES AT PILLAR HEADS
140 BRACKET AT HEAD OF EACH PILLAR
140 CAP PLATE DO
140 TRIPPING BATS ON GIRDER ON ALTERNATE FRAMES

1 x 3 x 140 B.A. AT SIDES ONLY
SINGLE RIV. LAP
COAMING 140
HATCHES 20 x 6
GIRDER AS PER PROFILE
INTERCOSTAL FOR 2 SPACES AT PILLAR HEADS
140 BRACKET AT HEAD OF EACH PILLAR
140 CAP PLATE DO
140 TRIPPING BATS ON GIRDER ON ALTERNATE FRAMES

1 x 3 x 140 B.A. AT SIDES ONLY
SINGLE RIV. LAP
COAMING 140
HATCHES 20 x 6
GIRDER AS PER PROFILE
INTERCOSTAL FOR 2 SPACES AT PILLAR HEADS
140 BRACKET AT HEAD OF EACH PILLAR
140 CAP PLATE DO
140 TRIPPING BATS ON GIRDER ON ALTERNATE FRAMES

1 x 3 x 140 B.A. AT SIDES ONLY
SINGLE RIV. LAP
COAMING 140
HATCHES 20 x 6
GIRDER AS PER PROFILE
INTERCOSTAL FOR 2 SPACES AT PILLAR HEADS
140 BRACKET AT HEAD OF EACH PILLAR
140 CAP PLATE DO
140 TRIPPING BATS ON GIRDER ON ALTERNATE FRAMES

1 x 3 x 140 B.A. AT SIDES ONLY
SINGLE RIV. LAP
COAMING 140
HATCHES 20 x 6
GIRDER AS PER PROFILE
INTERCOSTAL FOR 2 SPACES AT PILLAR HEADS
140 BRACKET AT HEAD OF EACH PILLAR
140 CAP PLATE DO
140 TRIPPING BATS ON GIRDER ON ALTERNATE FRAMES

1 x 3 x 140 B.A. AT SIDES ONLY
SINGLE RIV. LAP
COAMING 140
HATCHES 20 x 6
GIRDER AS PER PROFILE
INTERCOSTAL FOR 2 SPACES AT PILLAR HEADS
140 BRACKET AT HEAD OF EACH PILLAR
140 CAP PLATE DO
140 TRIPPING BATS ON GIRDER ON ALTERNATE FRAMES

1 x 3 x 140 B.A. AT SIDES ONLY
SINGLE RIV. LAP
COAMING 140
HATCHES 20 x 6
GIRDER AS PER PROFILE
INTERCOSTAL FOR 2 SPACES AT PILLAR HEADS
140 BRACKET AT HEAD OF EACH PILLAR
140 CAP PLATE DO
140 TRIPPING BATS ON GIRDER ON ALTERNATE FRAMES

1 x 3 x 140 B.A. AT SIDES ONLY
SINGLE RIV. LAP
COAMING 140
HATCHES 20 x 6
GIRDER AS PER PROFILE
INTERCOSTAL FOR 2 SPACES AT PILLAR HEADS
140 BRACKET AT HEAD OF EACH PILLAR
140 CAP PLATE DO
140 TRIPPING BATS ON GIRDER ON ALTERNATE FRAMES

1 x 3 x 140 B.A. AT SIDES ONLY
SINGLE RIV. LAP
COAMING 140
HATCHES 20 x 6
GIRDER AS PER PROFILE
INTERCOSTAL FOR 2 SPACES AT PILLAR HEADS
140 BRACKET AT HEAD OF EACH PILLAR
140 CAP PLATE DO
140 TRIPPING BATS ON GIRDER ON ALTERNATE FRAMES

1 x 3 x 140 B.A. AT SIDES ONLY
SINGLE RIV. LAP
COAMING 140
HATCHES 20 x 6
GIRDER AS PER PROFILE
INTERCOSTAL FOR 2 SPACES AT PILLAR HEADS
140 BRACKET AT HEAD OF EACH PILLAR
140 CAP PLATE DO
140 TRIPPING BATS ON GIRDER ON ALTERNATE FRAMES

1 x 3 x 140 B.A. AT SIDES ONLY
SINGLE RIV. LAP
COAMING 140
HATCHES 20 x 6
GIRDER AS PER PROFILE
INTERCOSTAL FOR 2 SPACES AT PILLAR HEADS
140 BRACKET AT HEAD OF EACH PILLAR
140 CAP PLATE DO
140 TRIPPING BATS ON GIRDER ON ALTERNATE FRAMES

1 x 3 x 140 B.A. AT SIDES ONLY
SINGLE RIV. LAP
COAMING 140
HATCHES 20 x 6
GIRDER AS PER PROFILE
INTERCOSTAL FOR 2 SPACES AT PILLAR HEADS
140 BRACKET AT HEAD OF EACH PILLAR
140 CAP PLATE DO
140 TRIPPING BATS ON GIRDER ON ALTERNATE FRAMES

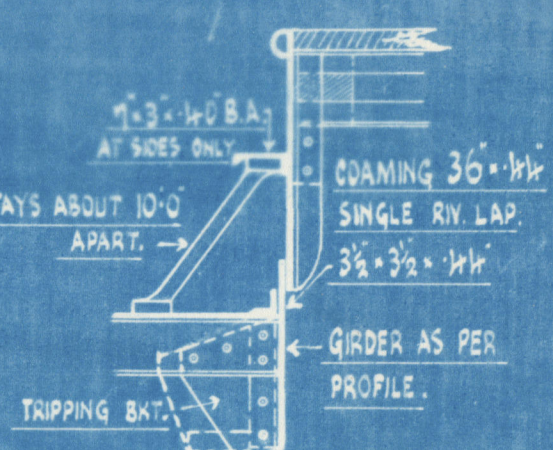
1 x 3 x 140 B.A. AT SIDES ONLY
SINGLE RIV. LAP
COAMING 140
HATCHES 20 x 6
GIRDER AS PER PROFILE
INTERCOSTAL FOR 2 SPACES AT PILLAR HEADS
140 BRACKET AT HEAD OF EACH PILLAR
140 CAP PLATE DO
140 TRIPPING BATS ON GIRDER ON ALTERNATE FRAMES

1 x 3 x 140 B.A. AT SIDES ONLY
SINGLE RIV. LAP
COAMING 140
HATCHES 20 x 6
GIRDER AS PER PROFILE
INTERCOSTAL FOR 2 SPACES AT PILLAR HEADS
140 BRACKET AT HEAD OF EACH PILLAR
140 CAP PLATE DO
140 TRIPPING BATS ON GIRDER ON ALTERNATE FRAMES

BRIDGE HATCHES 33 x 0 1/2 x 20 x 6
5 WEBS 5 x 6 APART 19 3/4 x 36 ON TABLE B.
14 ANGLES 14 x 3 x 140 & AS PER PROFILE.
2 x WOOD COVERS.

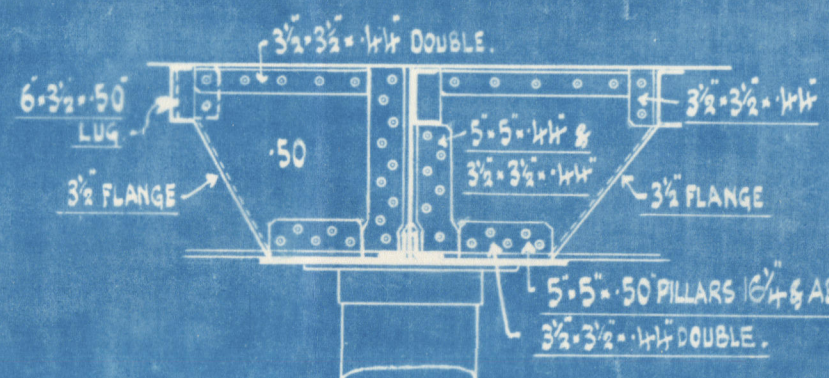
SHELTER DK. HATCHES UNDER BRIDGE 33 x 0 1/2 x 20 x 6
5 WEBS 5 x 6 APART 19 3/4 x 36 ON TABLE A
14 ANGLES 14 x 3 x 140 & AS PER PROFILE.
3 WOOD COVERS.

HATCHES CLEAR OF BRIDGE



SECOND DK. HATCHES UNDER BRIDGE 33 x 0 1/2 x 20 x 6
5 WEBS 5 x 6 APART ON TABLE A.
14 ANGLES 14 x 3 x 140 & AS PER PROFILE.
3 WOOD COVERS.

LONGITUDINAL INTERCOSTALS AT PILLAR HEADS.



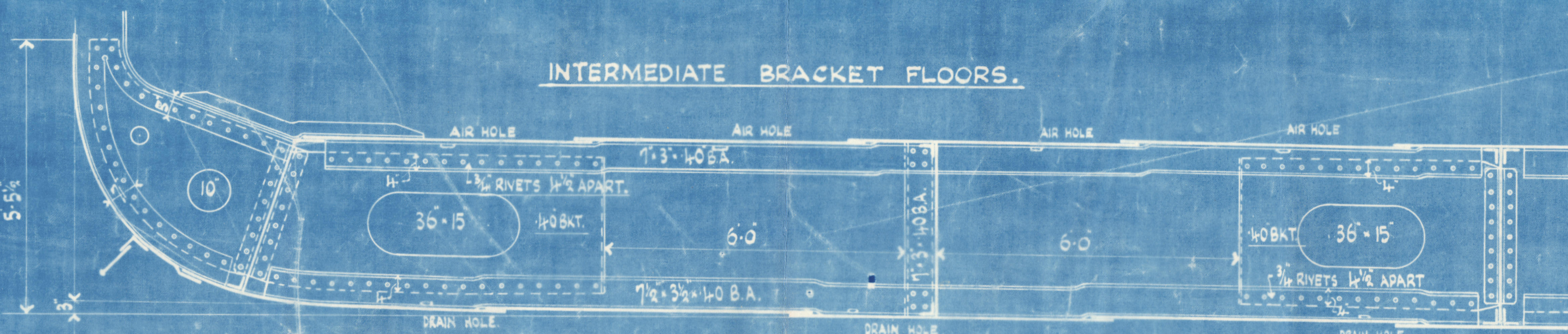
TANK TOP CENTRE STRAKE 52 x 50 TO 142
TREBLE RIV. OVERLAP BUTTS 1/2 LTH. DOUBLE AT ENDS.

CENTRE GIRDER 142 x 514 TO 144
TREBLE RIV. OVERLAP BUTTS.

C. GIRDER TOP BARS 3 x 3 x 58 TO 148
DO VERTICALS 3 x 3 x 142 SINGLE
SINGLE IN ENGINE ROOM & UNDER THRUST
BLOCK 5 x 5 x 142
RIVETS 5 DIAS. APART 3/4 TO FLOORS 1/8 TO C. GIRDER
C. GIRDER BOTTOM BARS 14 x 14 x 58 TO 54

FLAT PLATE KEEL 50 x 14 TO 65 QUAD RIV. OVERLAP BUTTS FOR
1/2 LTH. TREBLE AT ENDS.

INTERMEDIATE BRACKET FLOORS.



M.V. N^o 5514.

See Appendix for
attention only

SUNDERLAND.

MESSRS. J. L. THOMPSON & SONS.

M.V. "SILVERAY".

MIDSHIP SECTION.

W217-0033



© 2019

Lloyd's Register
Foundation