

- No 283 -

MIDSHIP SECTION.

DIMENSIONS: 460'-0" B.P. x 61'-0" M.L.P. = 33'-3" M.L.P. TO UPPER D.E.

SCALE 1/2" = 1 FOOT

LLOYD'S NUMERALS

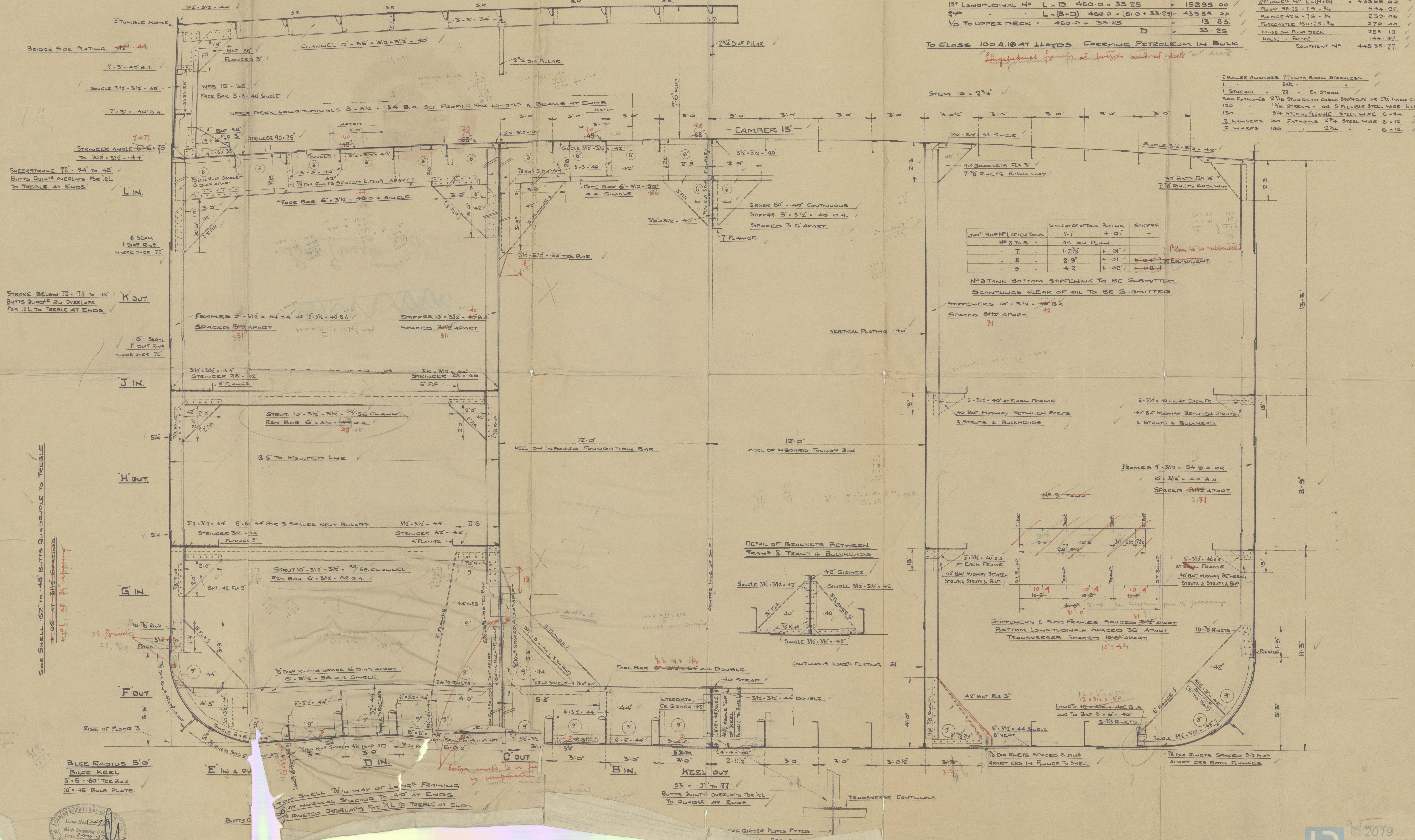
1ST LONGITUDINAL No L x D. 460.0 x 33.25 = 15295.00
 2ND " " L x (B+D) 460.0 x (61.0 + 33.25) = 43555.00
 1/2 TO UPPER DECK : 460.0 x 33.25 = 13.83
 D = 33.25

2ND LONGITUDINAL No L x (B+D) = 43555.00
 POOP 36.75 x 7.5 = 275.62
 BRIDGE 42.5 x 7.5 = 318.75
 FORECASTLE 48.0 x 7.5 = 360.00
 HOUSE ON POOP DECK 28.5 x 1.2 = 34.20
 HOUSE - BRIDGE 144.37
 EQUIPMENT No 44835.77

TO CLASS 100 A.1.8 AT LLOYD'S CARRYING PETROLEUM IN BULK

Longitudinal frames at bottom and at deck at 10' apart

2 BOWER ANCHORS 7 TONS EACH STEELLESS
 1. STREAM 72 " E. STOCK
 300 FATHOMS 2 7/16 SUB CLAMP CABLE 3/4" DIA. OR 2 1/8 TAYLOR CABLE
 130 " 1 1/16 STREAM OR 5 FLEXIBLE STEEL WIRE 6 x 12
 130 " 5/4 SPECIAL FLEXIBLE STEEL WIRE 6 x 12
 2 HAWSEERS 100 FATHOMS 2 3/4 STEEL WIRE 6 x 12
 2 WARPS 100 " 2 3/4 " 6 x 12



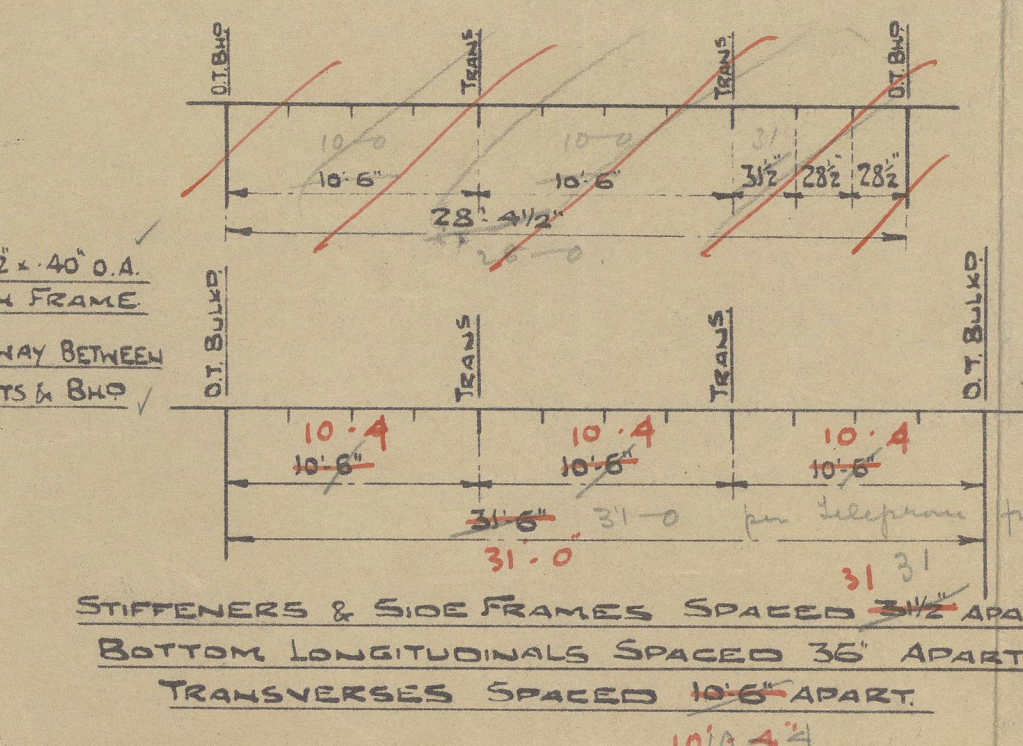
LONG. B.W.P. AFTER TANK	SHEAR STRENGTH OF TANK	PLATING	STIFFENERS
No 2 to 6	AS ON PLAN	+ .01"	-
7	1.2 7/8	+ .01"	-
8	2.9	+ .01"	-
9	4.2	+ .02"	-

No 9 TANK BOTTOM STIFFENING TO BE SUBMITTED
 SCANTLING CLEAR OF OIL TO BE SUBMITTED

STIFFENERS 10'-3 1/2" x 3 1/2" S.B. CHANNEL
 SPACED 31" APART

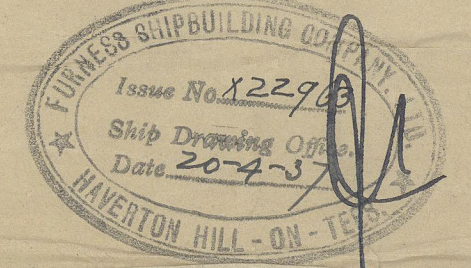
6'-3 1/2" x 40" O.A. AT EACH FRAME
 40" BKT MIDWAY BETWEEN STRUTS & BULKHEADS

FRAMES 9'-3 1/2" x 54" B.A. OR
 10'-3 1/2" x 40" B.A.
 SPACED 31" APART



STIFFENERS & SIDE FRAMES SPACED 31" APART
 BOTTOM LONGITUDINALS SPACED 36" APART
 TRANSVERSES SPACED 10'-6" APART

LONG. 10'-3 1/2" x 40" B.A.
 LUG TO BKT 6'-6" x 40"

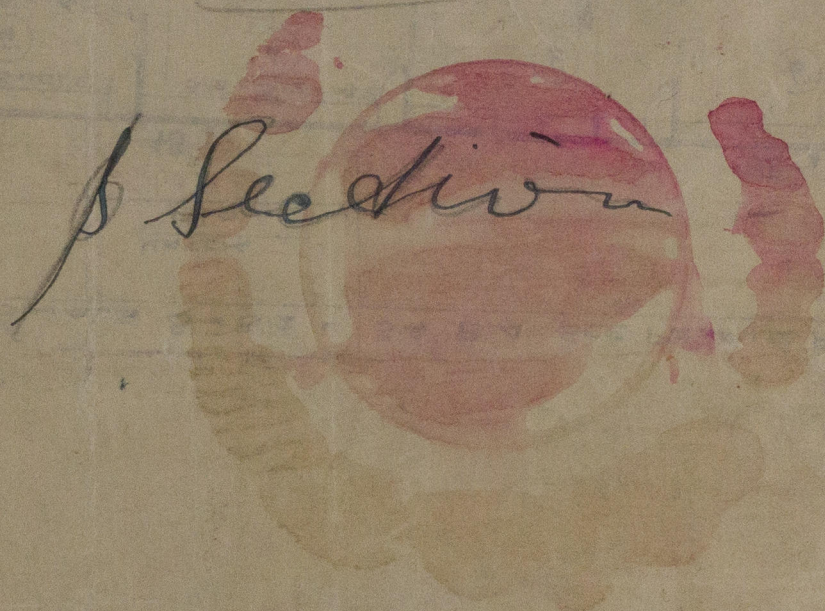


TO BE RETURNED TO
LONDON.

GENERAL NO. 100

^u
San Ernesto (3)
Indb 16579
Yurru

283



© 2019

Lloyd's Register
Foundation