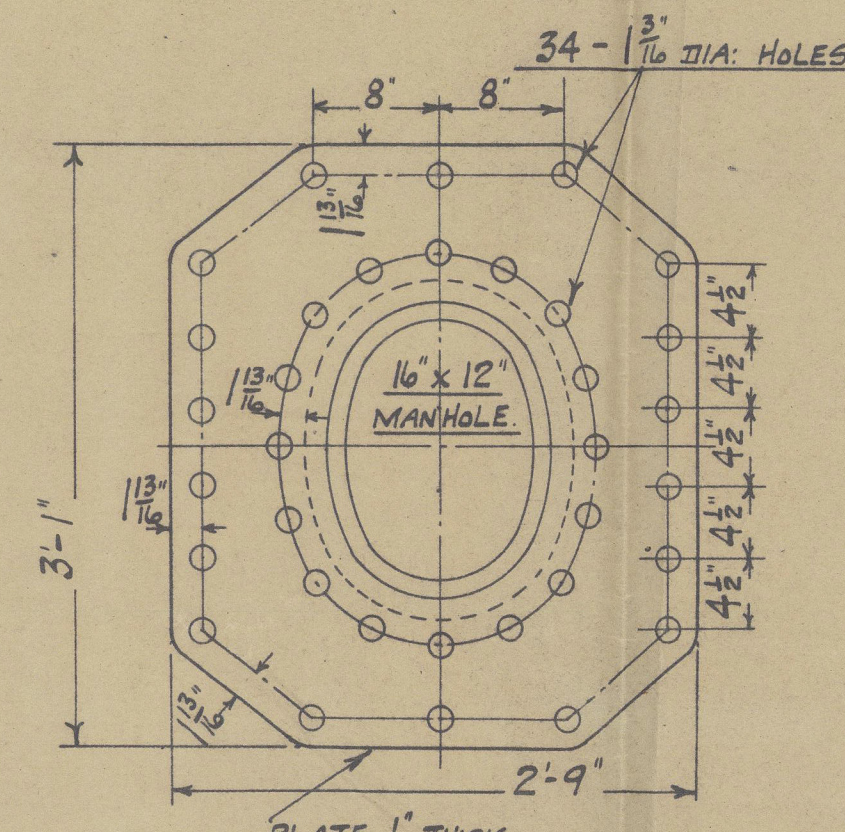
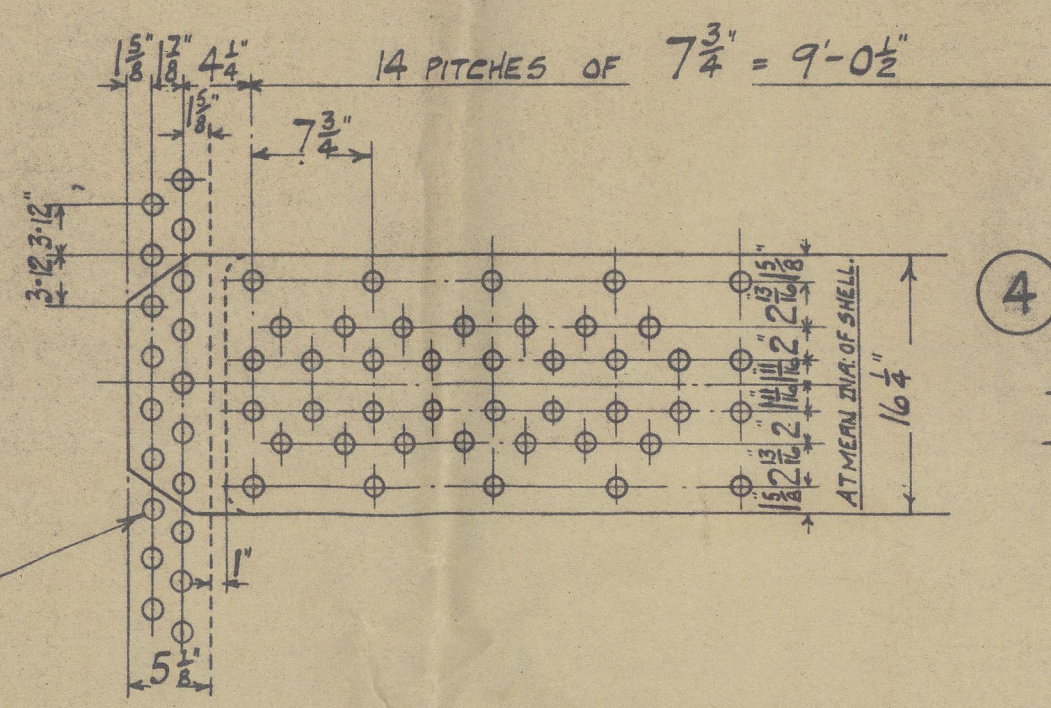
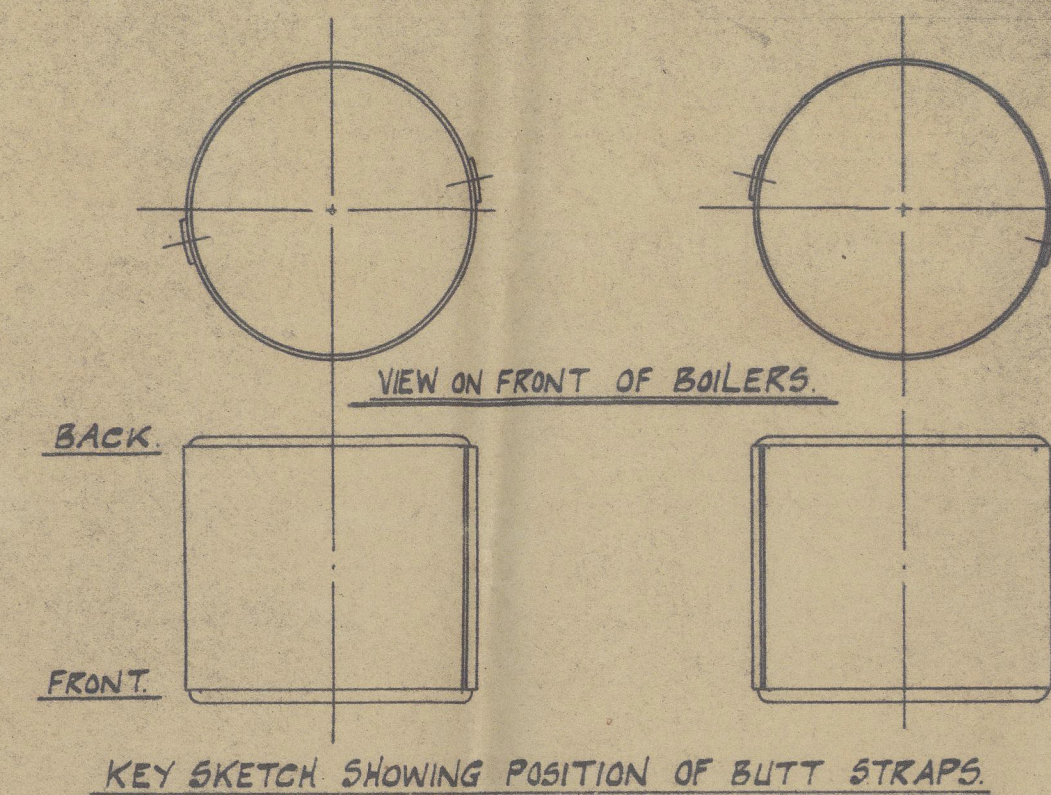
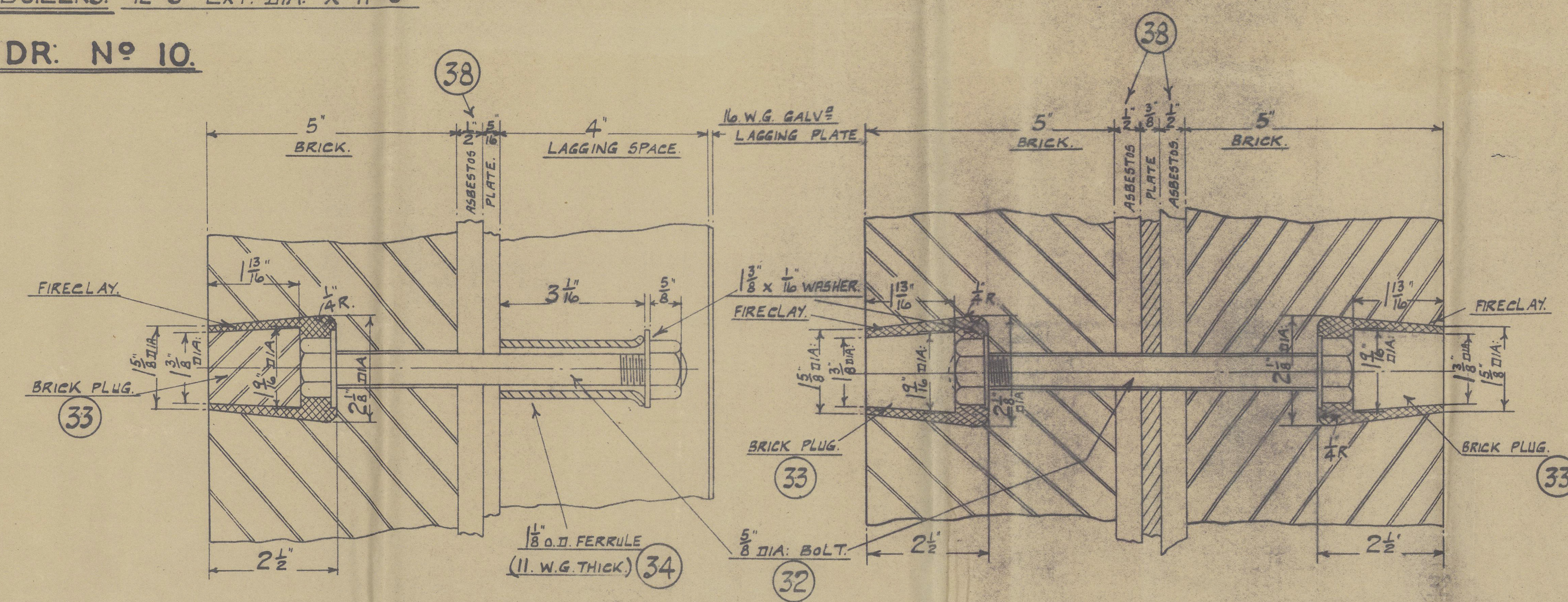
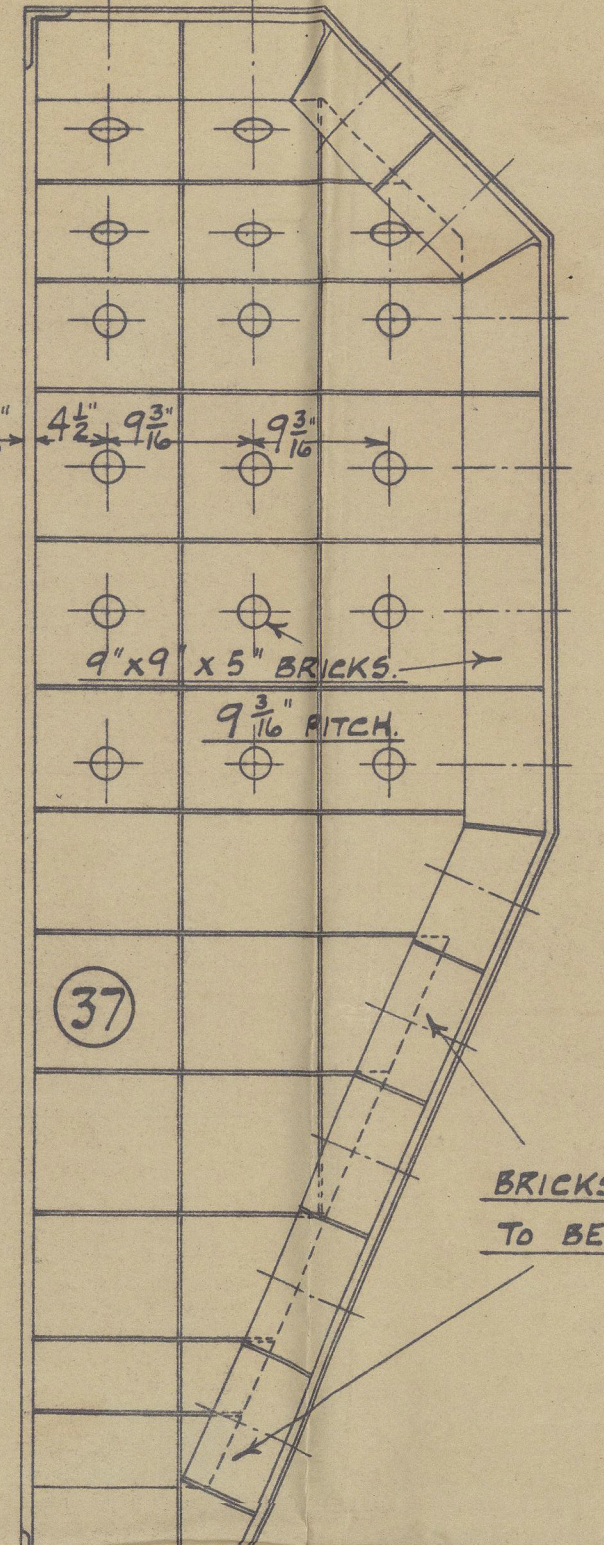
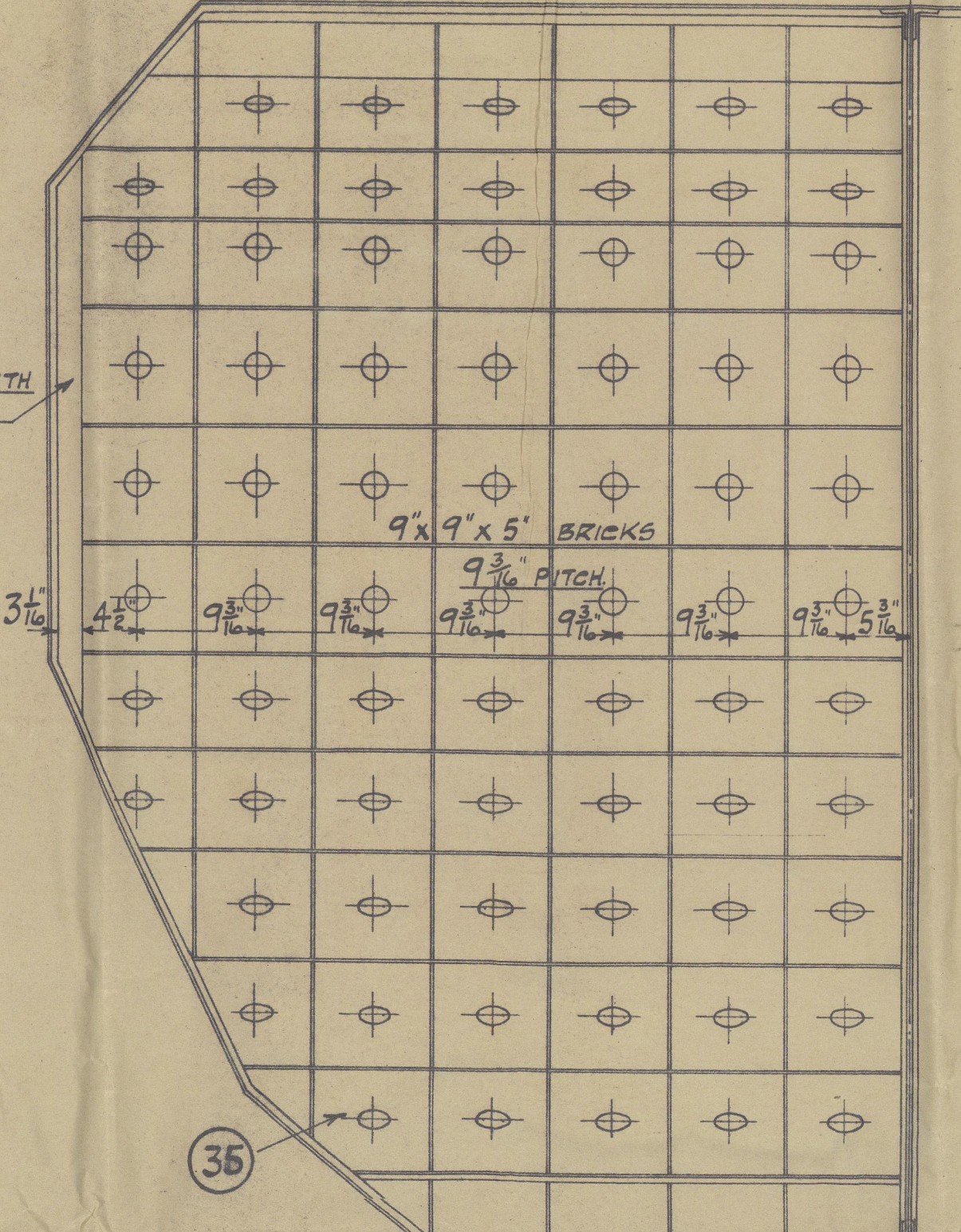


BOILERS, 12'-6" EXT. DIA. X 11'-0"

DR. N° 10.

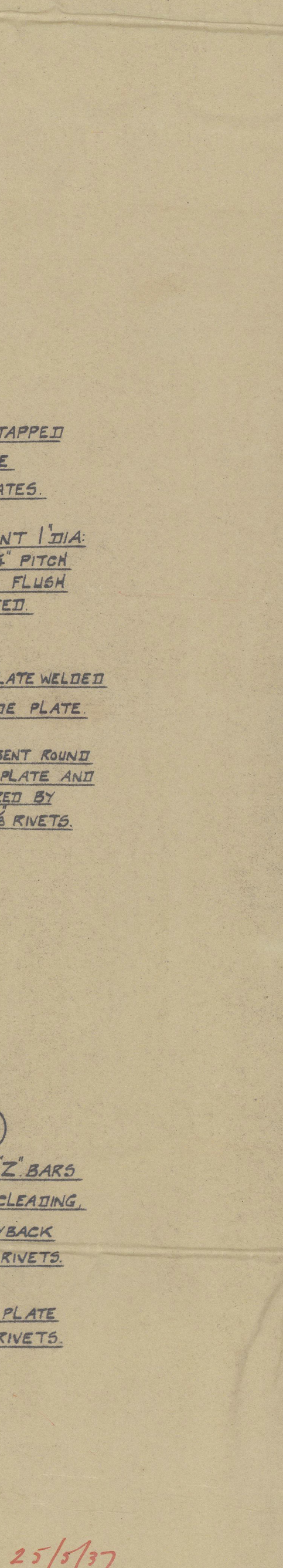
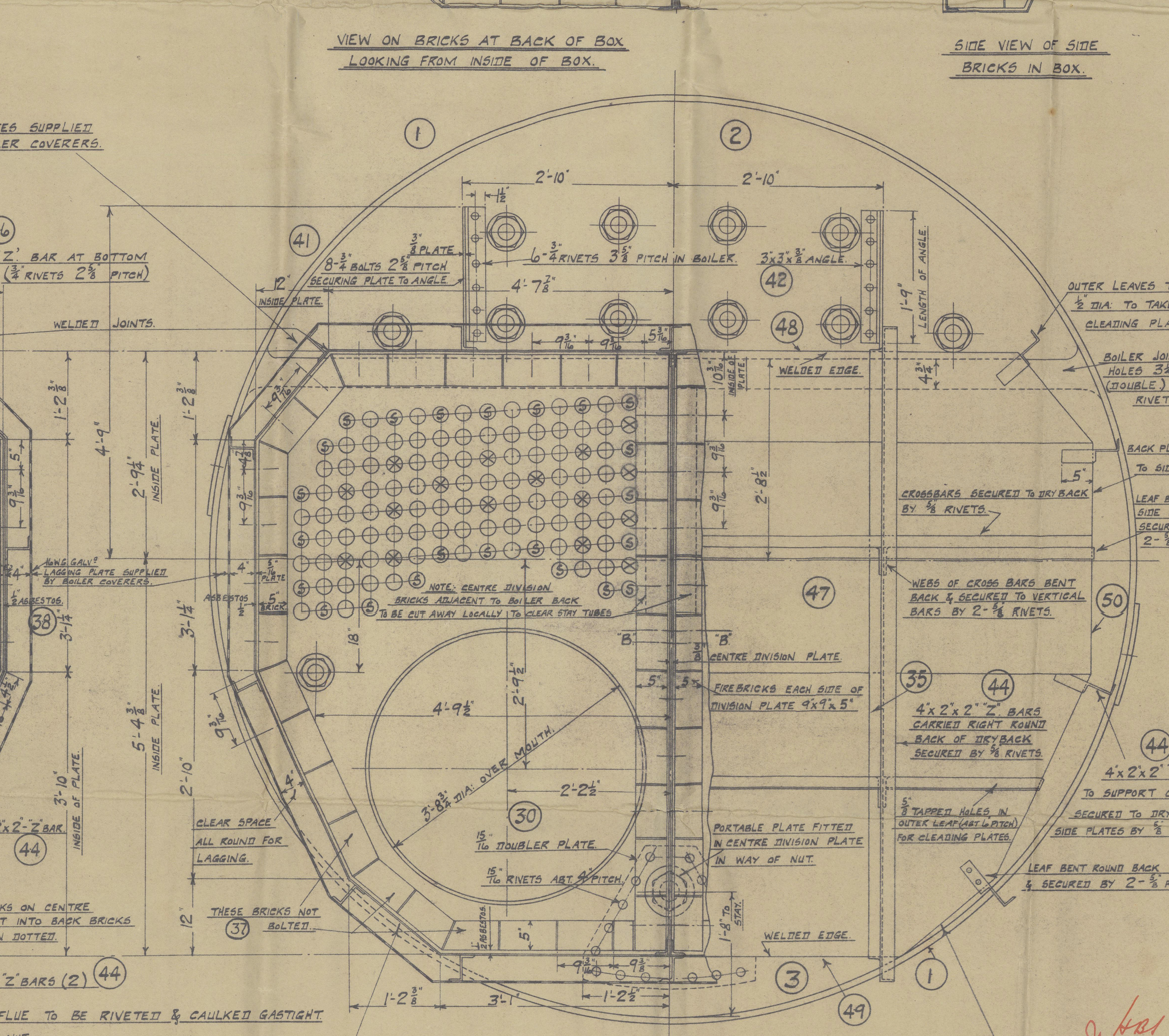
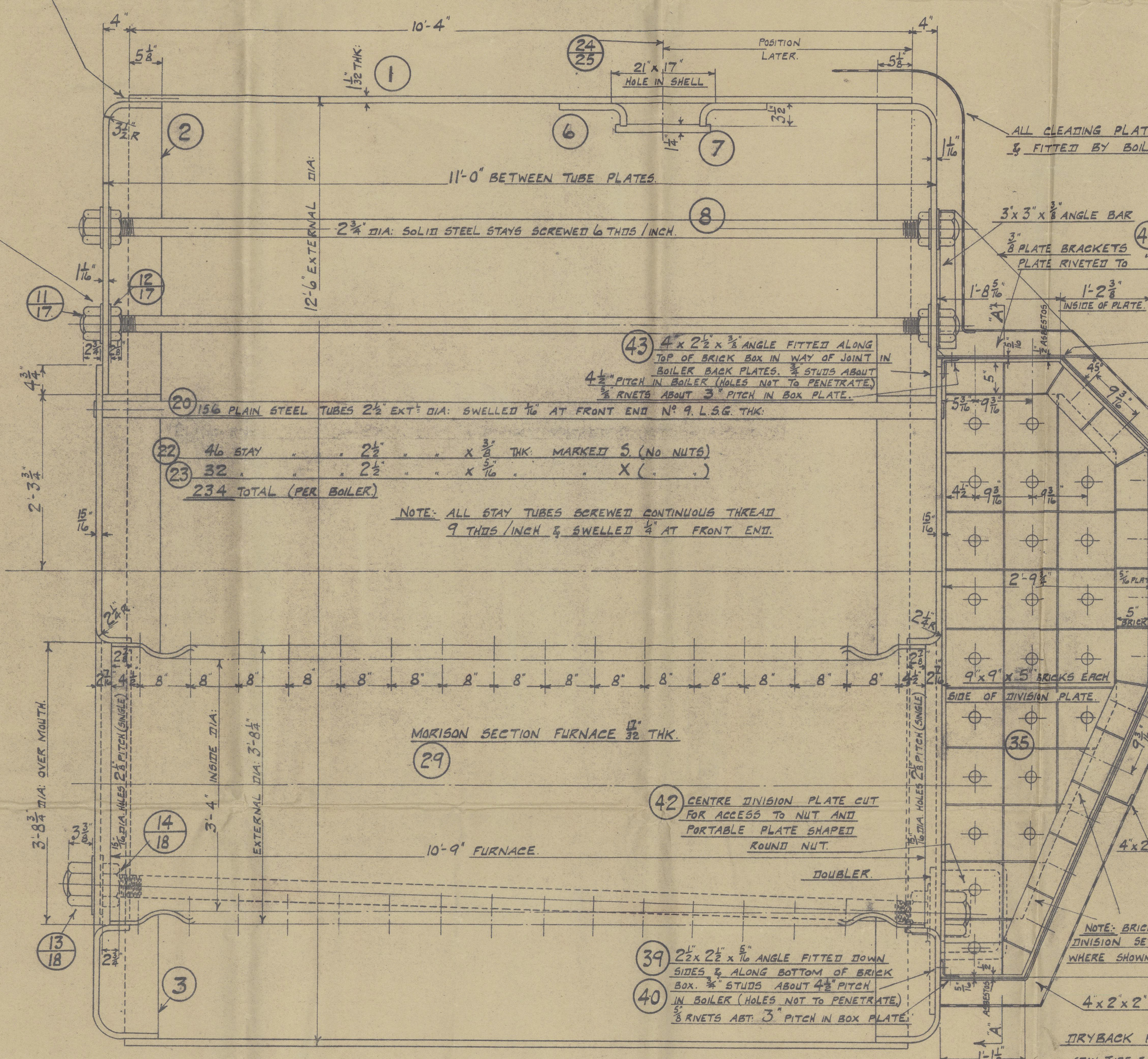
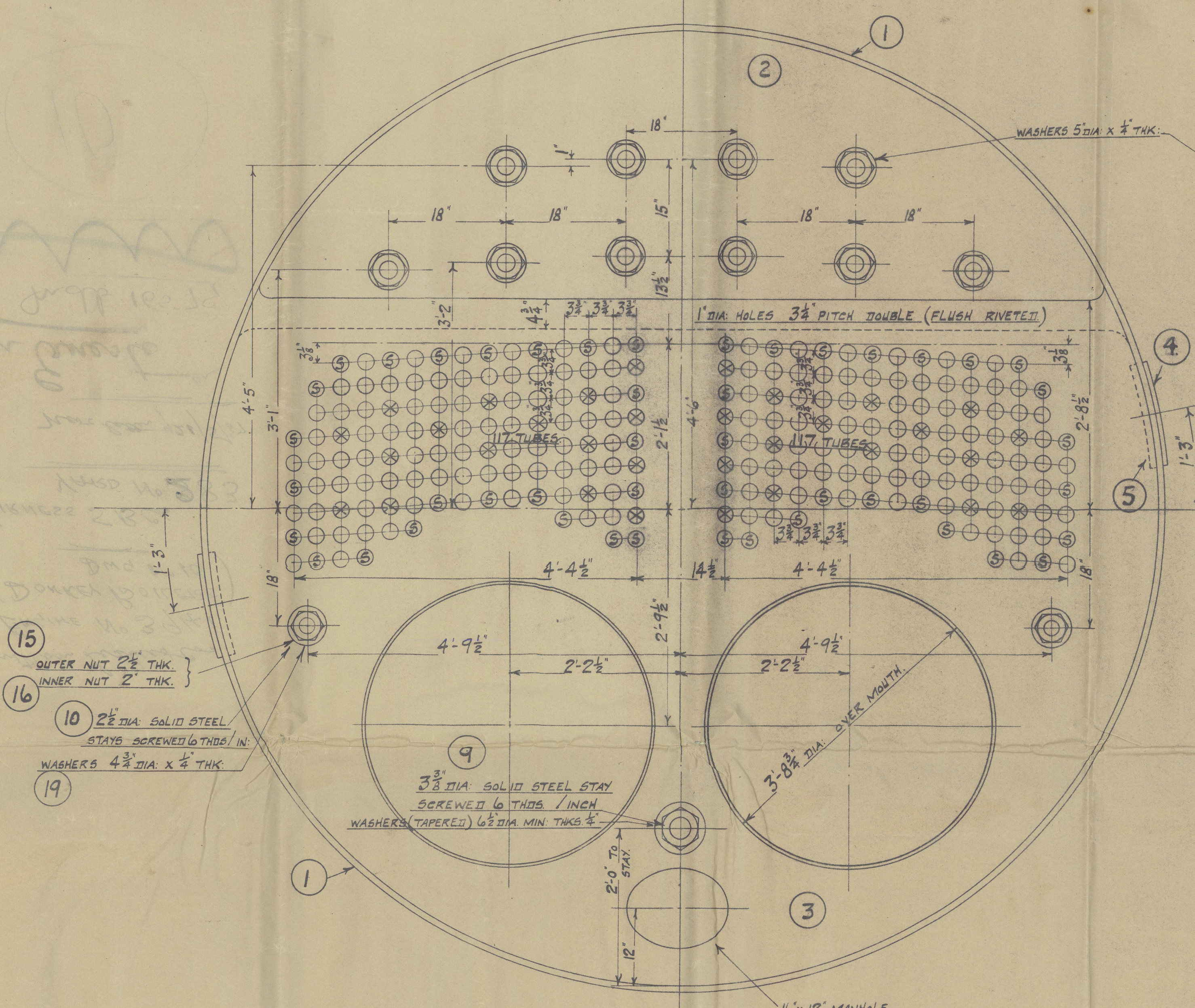


SPACE PACKED WITH FIRECLAY & BROKEN BRICK



LIST OF MATERIAL AND PARTS

ITEM NO.	DESCRIPTION	QTY	UNIT	REMARKS	QTY	UNIT	REMARKS
1	SHELL PLATES	4	19'-6 1/2" x 10'-4 1/2" x 1 1/2"	STEEL 20-30	10		
2	TOP ENDS - FRONT & BACK	4	15" THICK		10		
3	BOTT ENDS - FRONT & BACK	4	15" THICK		10		
4	BUTT STRAPS - OUTER	4	10'-4 1/2" x 1'-5" x 3/8"		10		
5	" " " " INNER	4	9'-4 1/2" x 1'-4 1/2" x 3/8"		10		
6	COMPENSATING PLATE	2	3'-1 1/2" x 2'-1 1/2" x 1"		10		
7	MANHOLE DOORS	4	1'-9" x 1'-5" x 1 1/2"		10		
8	STEAM SPACE STAYS	20	2 1/2" DIA. x 11'-7"		13		
9	WATER " " "	2	3 1/2" DIA. x 11'-11"		13		
10	BREAST " " "	4	2 1/2" DIA. x 11'-9"		13		
11	STEAM SPACE STAYS (OUTER)	40	2 1/2" DIA. x 2 1/2"		13		
12	" " " " (INNER)	40	2 1/2" DIA. x 2 1/2"		13		
13	WATER " " "	4	3 1/2" DIA. x 2 1/2"		13		
14	" " " " (INNER)	4	3 1/2" DIA. x 2 1/2"		13		
15	BREAST " " "	8	2 1/2" DIA. x 2 1/2"		13		
16	" " " " (INNER)	8	2 1/2" DIA. x 2 1/2"		13		
17	STEAM " " "	80	5" DIA. x 1/2" THK.		13		
18	WATER " " "	8	6 1/2" DIA. x 1/2" THK.		13		
19	BREAST " " "	8	6 1/2" DIA. x 1/2" THK.		13		
20	PLAIN TUBES	312	11'-2 1/2" x 2 1/2" DIA. x 9 L.B.G. STEEL		12		
21	SPARE " " "	92	11'-2 1/2" x 2 1/2" DIA. x 9 L.B.G. STEEL		12		
22	STAY TUBES	64	11'-2 1/2" x 2 1/2" DIA. x 9 L.B.G. STEEL		12		
23	TOP MANHOLE DOOR DOORS	4	PATTERN 'A'		10		
24	" " " " (INNER)	4	PATTERN 'B'		10		
25	BUTT " " "	4	PATTERN 'C'		10		
26	" " " " (INNER)	4	PATTERN 'D'		10		
27	SPARE " " "	4	PATTERN 'E'		10		
28	LIFTING LUGS	8	PLATE FROM FURNACE MOUTH		10		
29	FURNACE	4	5'-4 1/2" DIA. 10'-9 1/2" LENGTH		11		
30	DOUBLER PLATE	2	2'-5 1/2" x 2'-0" x 1 1/2"		10		
31	RIVETS	200	3/4" DIA. RIVETS		10		
32	BRICK PLUGS	200	3/4" DIA. RIVETS		10		
33	FERRULES FOR (30)	200	3/4" DIA. RIVETS		10		
34	FERRULES FOR (30)	200	3/4" DIA. RIVETS		10		
35	SPARE " " "	200	3/4" DIA. RIVETS		10		
36	SPARE " " "	200	3/4" DIA. RIVETS		10		
37	SPARE " " "	200	3/4" DIA. RIVETS		10		
38	SPARE " " "	200	3/4" DIA. RIVETS		10		
39	SPARE " " "	200	3/4" DIA. RIVETS		10		
40	SPARE " " "	200	3/4" DIA. RIVETS		10		
41	SPARE " " "	200	3/4" DIA. RIVETS		10		
42	SPARE " " "	200	3/4" DIA. RIVETS		10		
43	SPARE " " "	200	3/4" DIA. RIVETS		10		
44	SPARE " " "	200	3/4" DIA. RIVETS		10		
45	SPARE " " "	200	3/4" DIA. RIVETS		10		
46	SPARE " " "	200	3/4" DIA. RIVETS		10		
47	SPARE " " "	200	3/4" DIA. RIVETS		10		
48	SPARE " " "	200	3/4" DIA. RIVETS		10		
49	SPARE " " "	200	3/4" DIA. RIVETS		10		
50	SPARE " " "	200	3/4" DIA. RIVETS		10		



HEATING SURFACE FOR ONE BOILER

TUBES	1700 #
FURNACES (OIL FUEL)	248 #
TOTAL	1948 #

2-OFF SEE KEY SKETCH FOR POSITION OF BUTT STRAPS

WORKING PRESSURE 180 LBS / IN<sup>2</sup>

TEST 320

TO LLOYD'S REQUIREMENTS & INSPECTION

BOILERS, 12'-6" EXT. DIA. X 11'-0"

SCALE:- 1" = ONE FOOT & AS MARKED

DRAWING N° 10.

ENGINE N° 3941.

DRAWN BY F. DAVENPORT  
TRACED BY G. WALKER  
CHECKED BY

20 MAY 1937

REWORKED ON 20 MAY 1937

REWORKED ON 20 MAY 1937

REWORKED ON 20 MAY 1937

REWORKED ON 20 MAY 1937

REWORKED ON 20 MAY 1937

REWORKED ON 20 MAY 1937



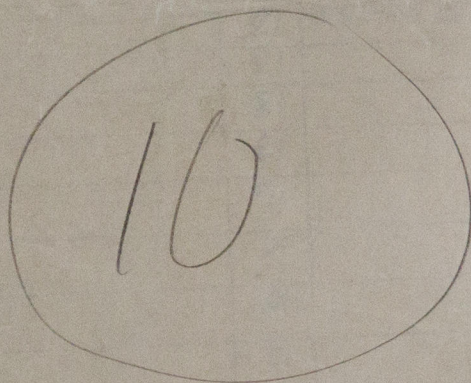
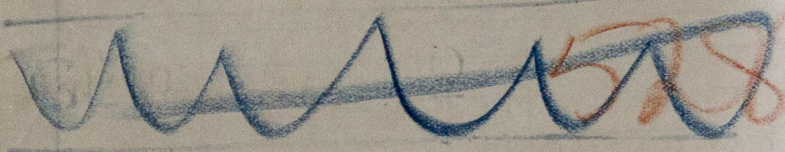
Hawthorn Leslie & Co  
ENGINE N° 3941  
(DONKEY BOILERS)  
DWG N° 10

for FURNESS S. B. Co  
YARD N° 283

NOTE letter 921/5/87

San Ernesto

Inclb 16579



© 2019

Lloyd's Register  
Foundation

WZ15-0128