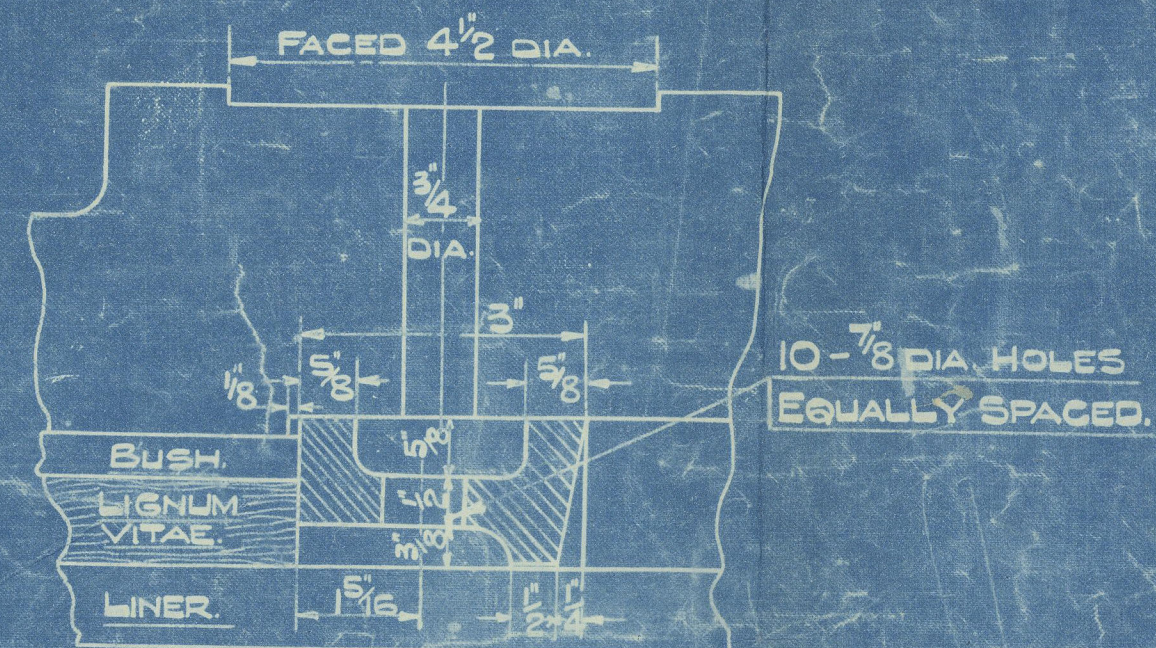
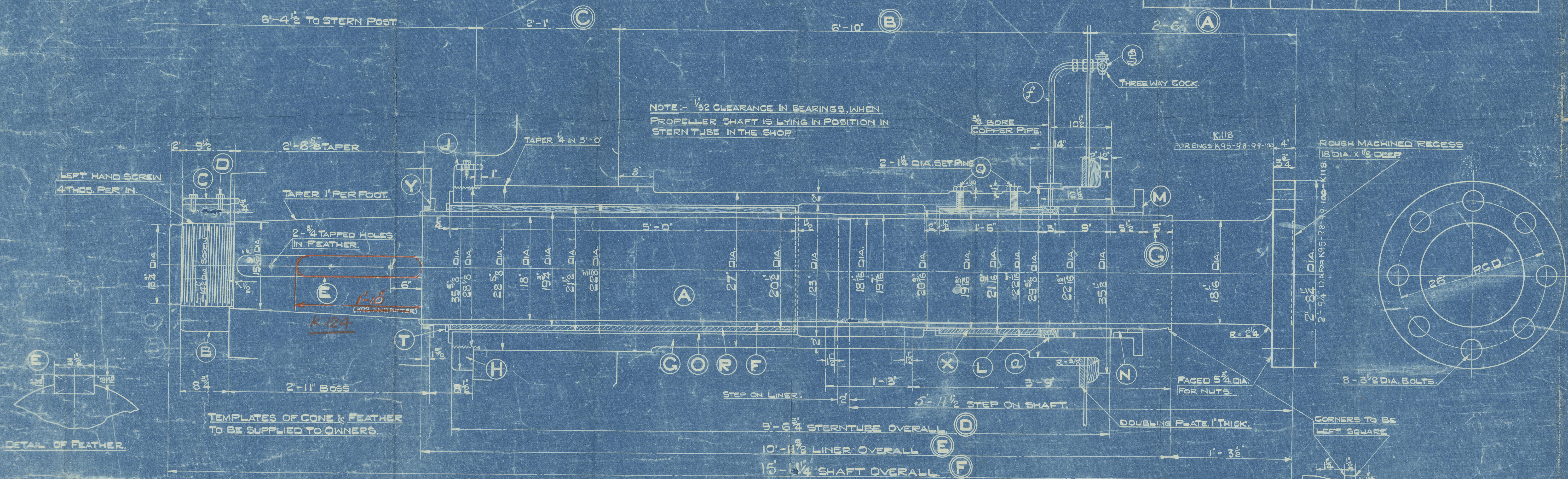


LENGTHS MEASURED FROM SHIP							
ENG. NO.	A.	B.	C.	D.	E.	F.	G.
K 95	2'-6 5/8"	6'-9 3/8"	2'-0 3/4"	9'-6 3/8"	10'-11 3/8"	15'-11 3/8"	5 3/8"
K 96	2'-6 3/8"	6'-9 1/2"	2'-1 1/4"	9'-6 1/2"	11'-0"	15'-11 3/8"	5 3/8"
K 97	2'-6 1/8"	6'-10"	2'-1"	9'-6 3/4"	11'-0 5/8"	15'-11 5/8"	5 1/2"
K 98	2'-4 7/8"	6'-10"	2'-0 3/4"	9'-6 1/2"	10'-10 3/8"	15'-9 3/8"	5 3/8"
K 99	2'-6 1/8"	6'-8 3/8"	2'-0 3/4"	9'-5 7/8"	10'-10 3/8"	15'-10"	5 1/2"
K 100	2'-6 1/8"	6'-7 1/2"	2'-0 3/4"	9'-4"	10'-9 3/8"	15'-8 7/8"	5 1/2"

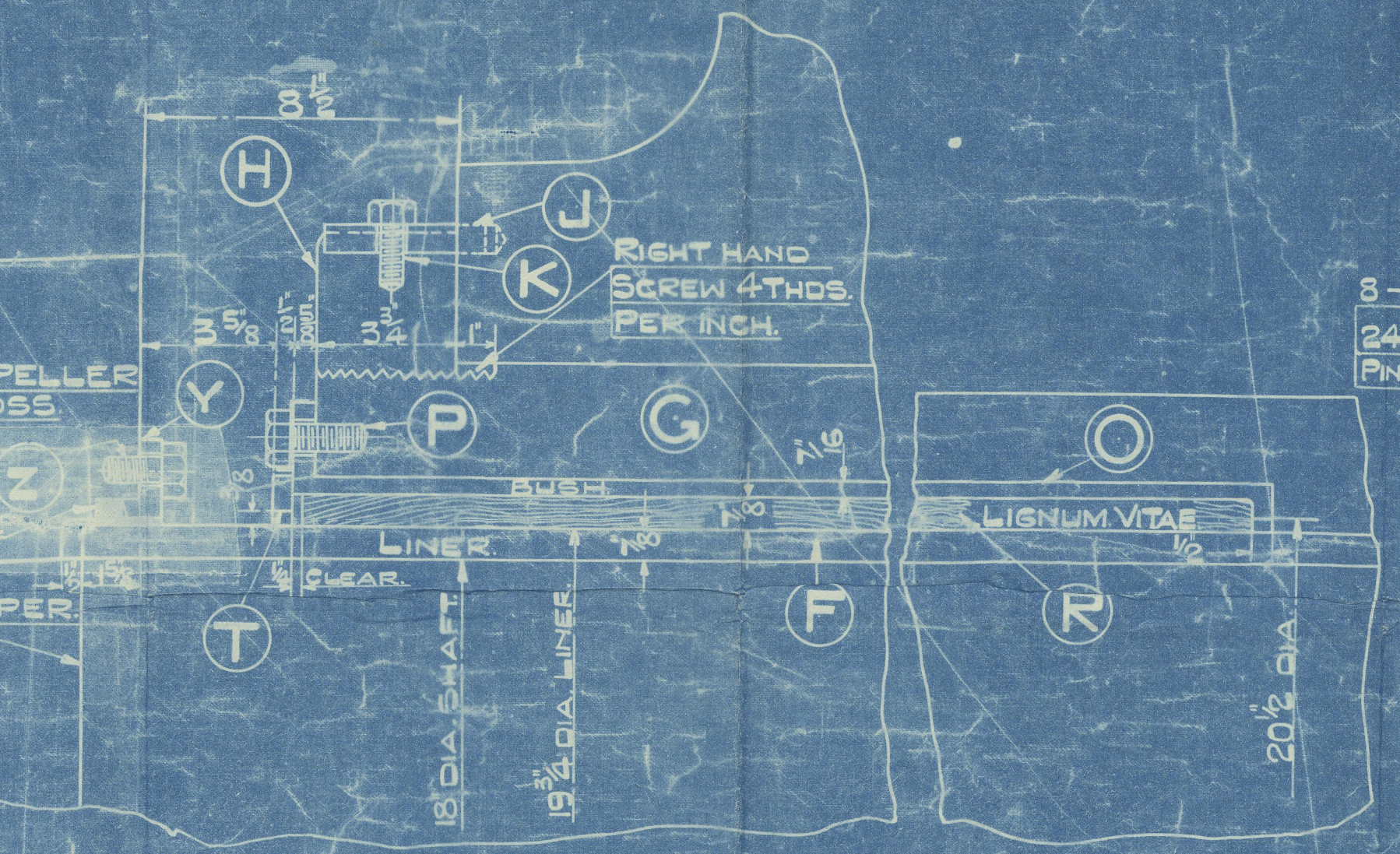
LENGTHS MEASURED FROM SHIP							
ENG. NO.	A.	B.	C.	D.	E.	F.	G.
K 95	2'-6 5/8"	6'-9 3/8"	2'-0 3/4"	9'-6 3/8"	10'-11 3/8"	15'-11 3/8"	5 3/8"
K 96	2'-6 3/8"	6'-9 1/2"	2'-1 1/4"	9'-6 1/2"	11'-0"	15'-11 3/8"	5 3/8"
K 97	2'-6 1/8"	6'-10"	2'-1"	9'-6 3/4"	11'-0 5/8"	15'-11 5/8"	5 1/2"
K 98	2'-4 7/8"	6'-10"	2'-0 3/4"	9'-6 1/2"	10'-10 3/8"	15'-9 3/8"	5 3/8"
K 99	2'-6 1/8"	6'-8 3/8"	2'-0 3/4"	9'-5 7/8"	10'-10 3/8"	15'-10"	5 1/2"
K 100	2'-6 1/8"	6'-7 1/2"	2'-0 3/4"	9'-4"	10'-9 3/8"	15'-8 7/8"	5 1/2"

LENGTHS MEASURED FROM SHIP							
ENG. NO.	A.	B.	C.	D.	E.	F.	G.
K 78	2'-7 1/4"	6'-9 5/8"	2'-1"	9'-6 3/8"	11'-0 3/8"	15'-11 3/8"	6 1/4"
K 77	2'-8 3/8"	6'-7 3/8"	2'-0 3/4"	9'-3 3/4"	10'-11 1/2"	15'-10 3/8"	7 3/8"
K 74	2'-6 15/8"	6'-9"	2'-0 3/4"	9'-5 3/8"	10'-11 3/8"	15'-10 3/8"	5 15/8"
K 92	2'-6 1/8"	8'-11"	9'-6 3/4"	10'-11 3/8"	15'-11 7/8"	5 3/8"	16 1/3 B.



DETAIL OF LANTERN RING.
HALF SIZE.

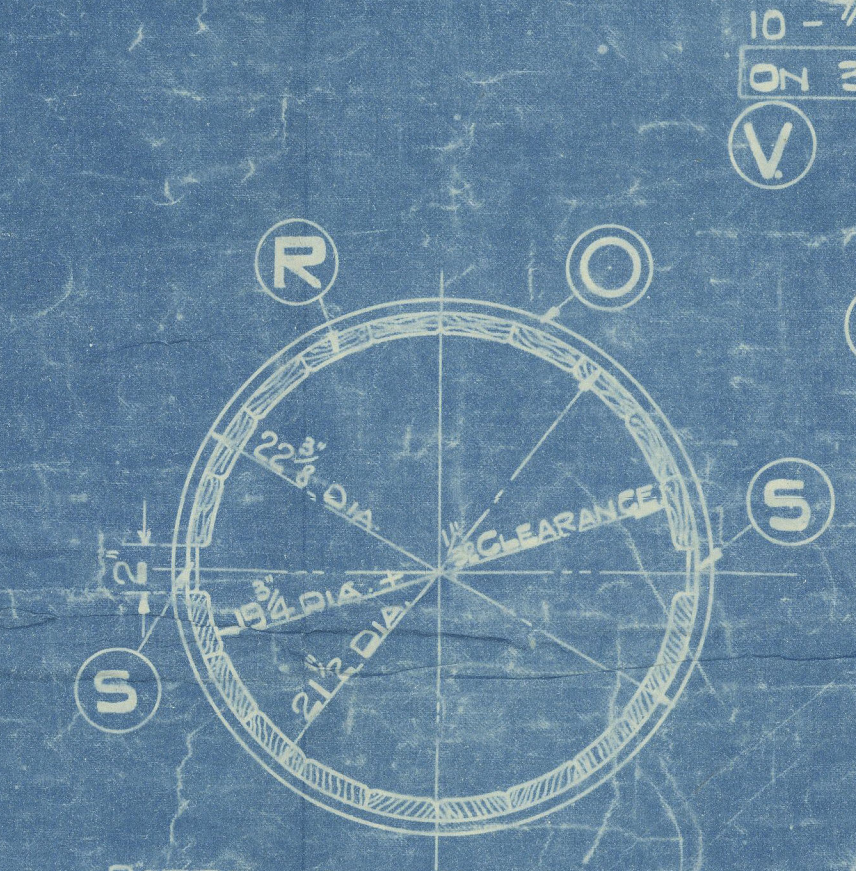
INDEX	DESCRIPTION	NO. OF WORKSPACE	MATERIAL	REMARKS
A.	PROPELLER SHAFT.	1	SIEMENS MARTIN INCO. STEEL	
B.	" NUT	1	WRO. IRON	
C.	" STOPPER	1	MILD STEEL	
D.	" PIN	2	WRO. IRON	
E.	" SHAFT FEATHER	1	MILD STEEL	
F.	" LINER	1	BURNETT	88% COPPER 10% TIN 2% ZINC
G.	STERN TUBE	1	CAST IRON	
H.	" NUT	1	MILD STEEL	
J.	" STOPPER	1		
K.	" PIN	1	WRO. IRON	
L.	" INNER BUSH	1	BRASS	
M.	" GLAND	1	CAST IRON	
N.	" BUSH	1	BRASS	
O.	" LIGNUM-VITAE BUSH	1		
P.	" BUSH PINS	8		
R.	" WOOD LINING	-	LIGNUM-VITAE	
S.	" STRIPS	2	BRASS	
T.	" GUARD RING	1		
U.	" PINS	8		
V.	" FLANGE BOLTS	10	WRO. IRON	
W.	" GLAND STUDS	6	MUNTZ METAL	
X.	" INNER BUSH WOOD LINING	-	LIGNUM-VITAE	
Y.	PROPELLER BOSS GLAND	1	BRASS	IN HALVES
Z.	" PINS	8		
Q.	STERN TUBE INNER BUSH SET PIN	2	STEEL	
a.	" LANTERN RING	1	BRASS	
b.	OUTER BUSH STRIP PINS	18	ROLLED BRONZE	
d.	STERN TUBE INNER BUSH STRIPS	2		
e.	INNER BUSH STRIP PINS	6		
f.	WATER SERVICE PIPE	1	COPPER	
g.	" COCK	1	BRASS	TO PREVENT CHECK
h.	WASHERS FOR BUSH PINS	8	COPPER	
i.	" GLAND	8		



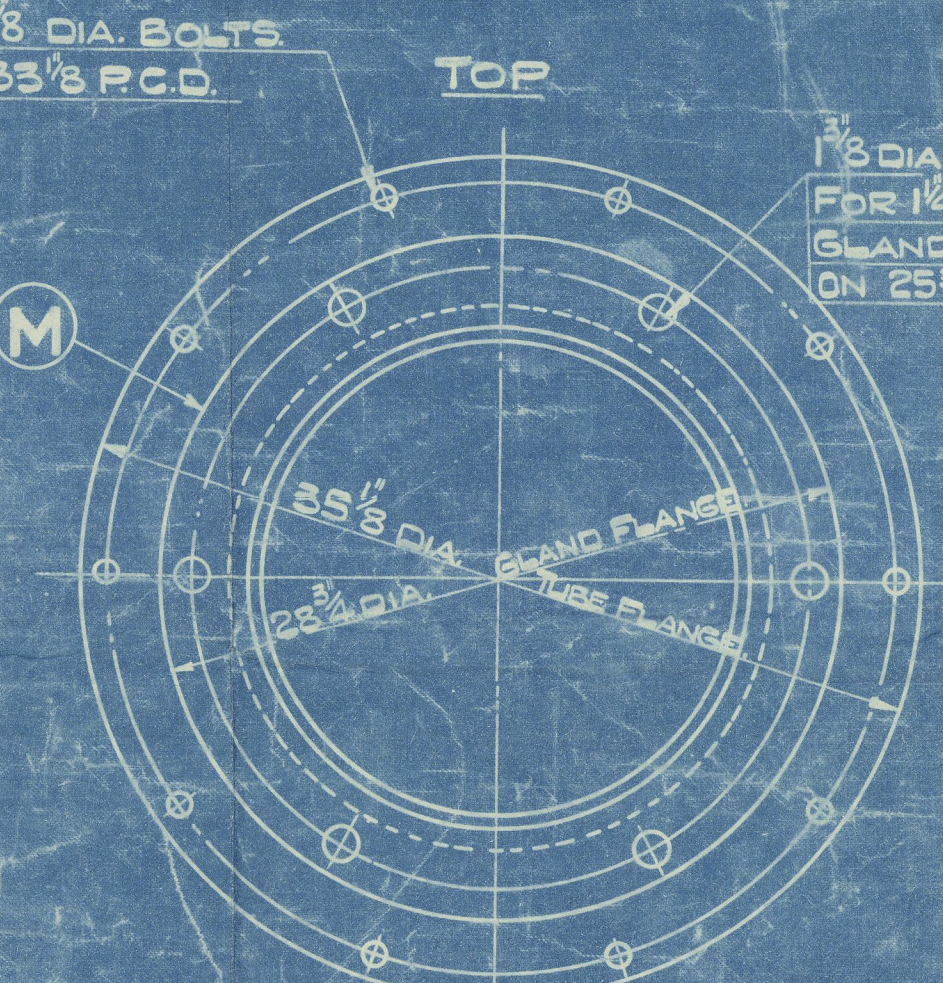
SECTION THRO' BUSH & LINER
SCALE: 3" = 1 FOOT.



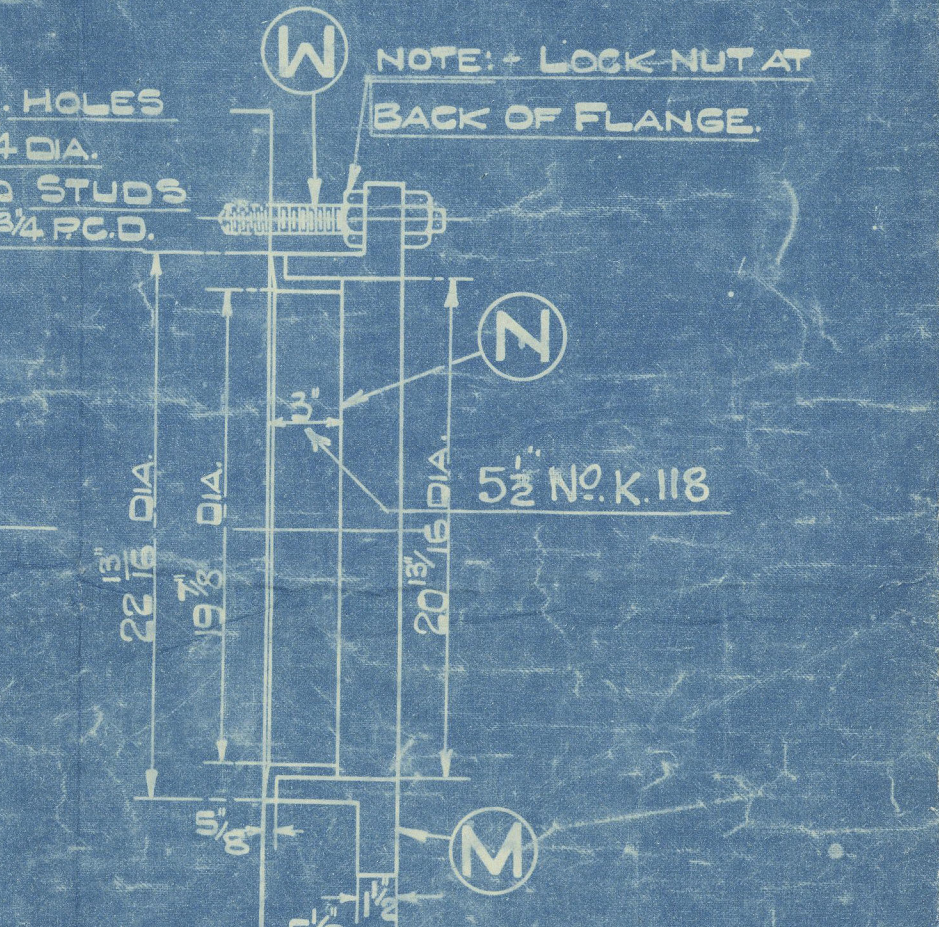
STERN TUBE NUT BUSH FLANGE AND GUARD RING. LOOKING FORWARDS.
SCALE: 3" = 1 FT.



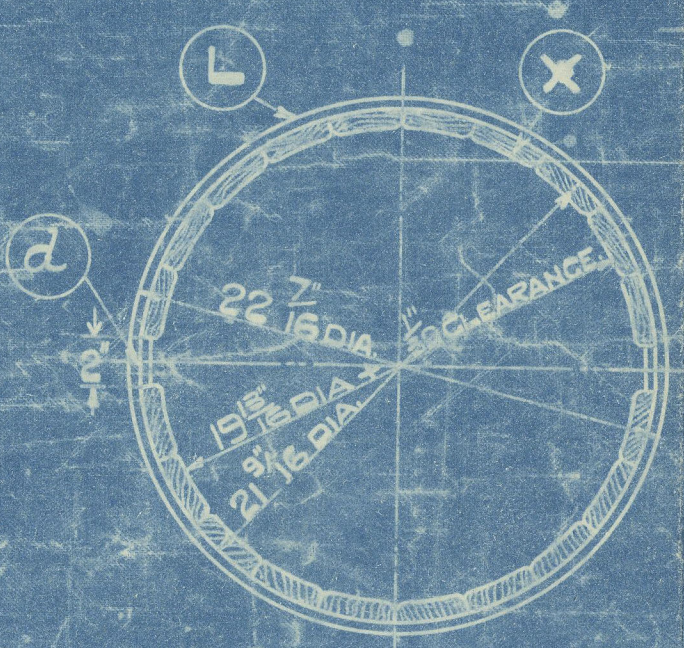
PROPPELLER SHAFT NUT.
SCALE: 3" = 1 FT.



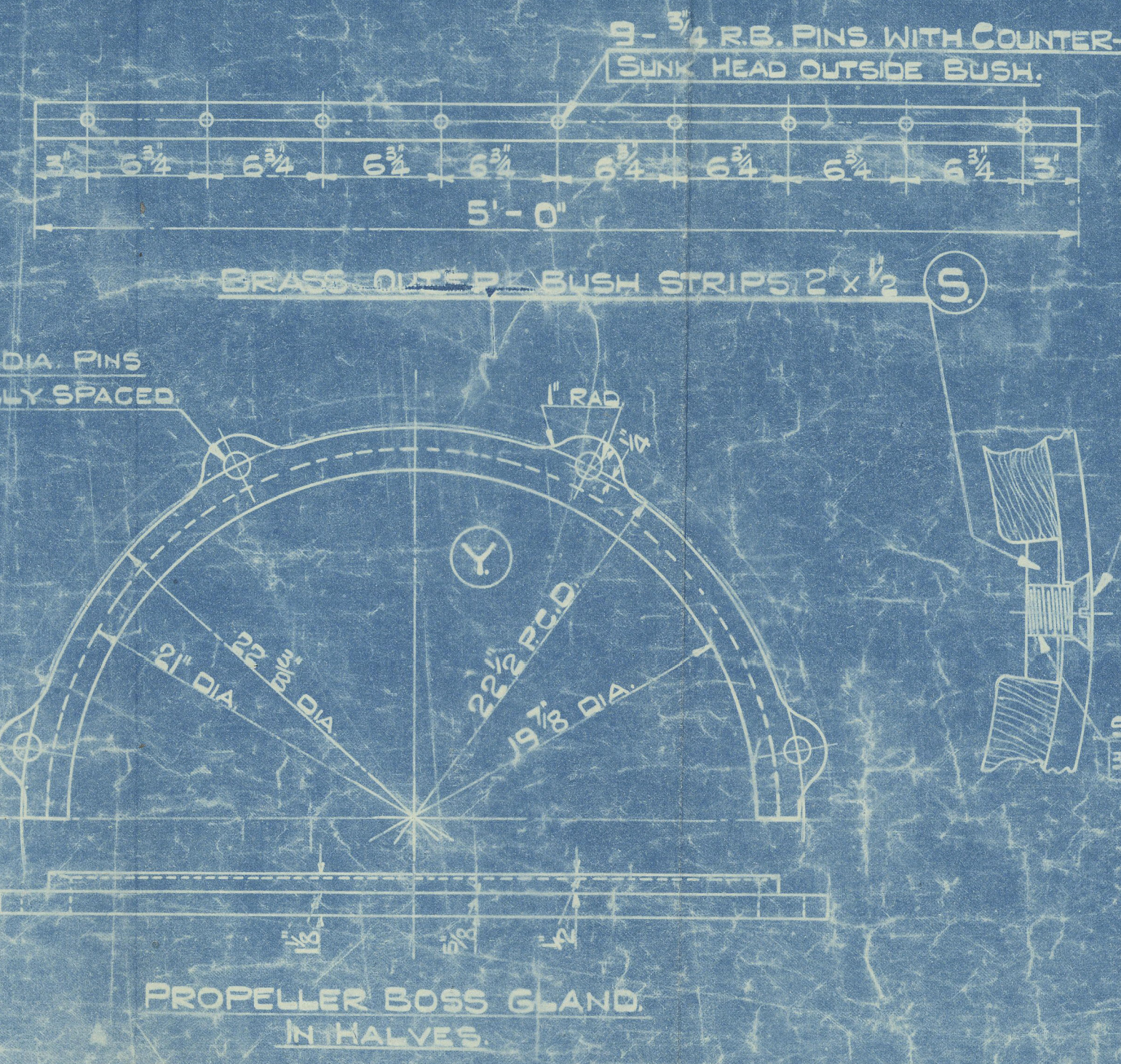
STERN TUBE GLAND.
SCALE: 3" = 1 FT.



GLAND STUDS.
SCALE: 3" = 1 FT.



BOTTOM HALF TO BE END WOOD.
SECTION THRO' INNER LIGNUM VITAE BUSH.



PROPELLER BOSS GLAND IN HALVES.

STERN TUBE & PROPELLER SHAFT ENGINE NO K 74-77-78

SCALE: 1/2" = 1 FOOT.
K. 92. TO RED.

K 95, 96, 97, 98, 99, 100
K 118
K 121, 122
K 124
K 120

Storage tank & Propeller
shaft.

Thru the R124

Turner 8750 1" 300

Duplicate

(14)

"SAN ERNESTO"

Grk. Report N^o 20400.

S.S. San Ernesto

MDB. RPT. No. 16579



© 2019

Lloyd's Register
Foundation

W215-0125