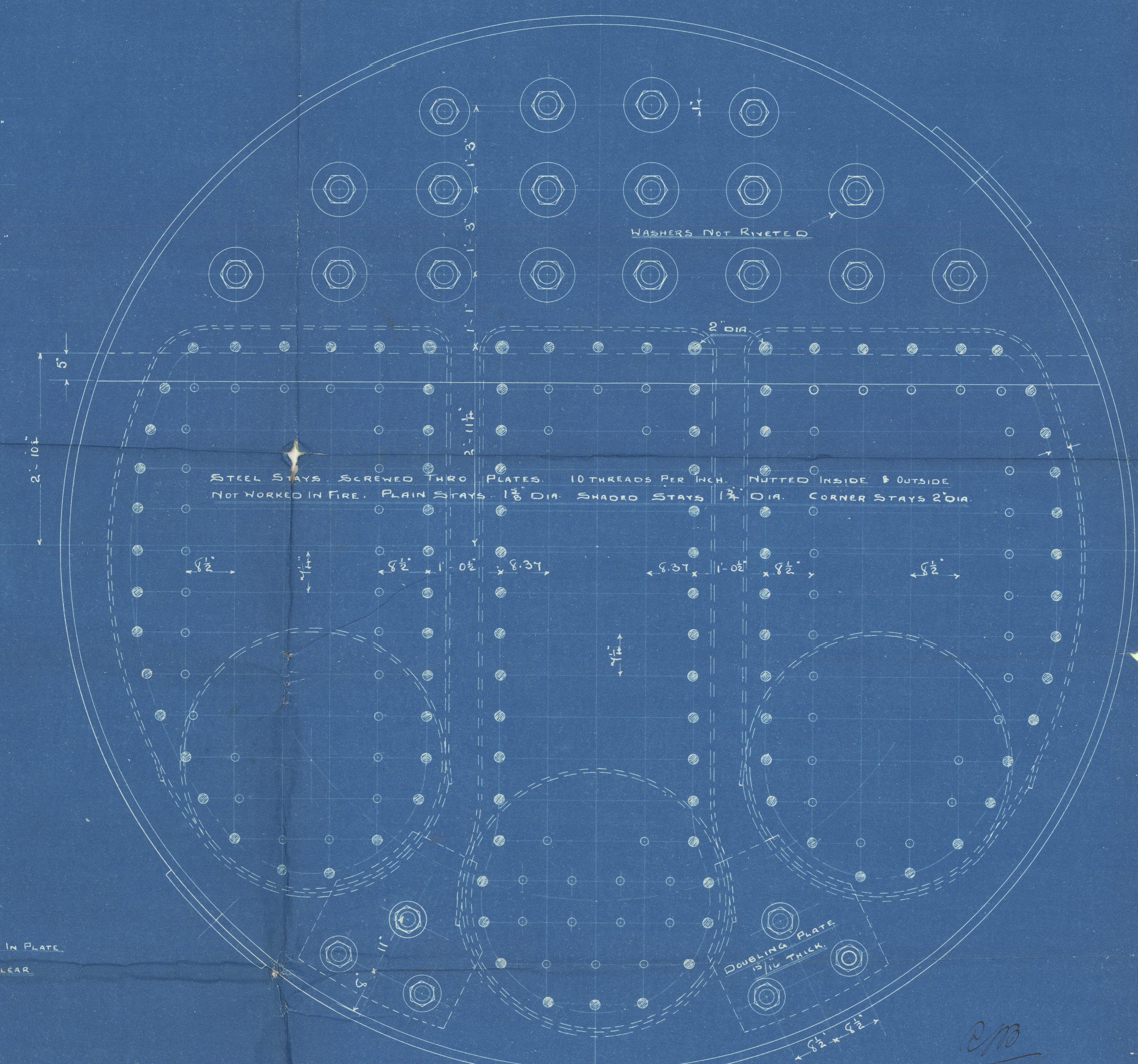
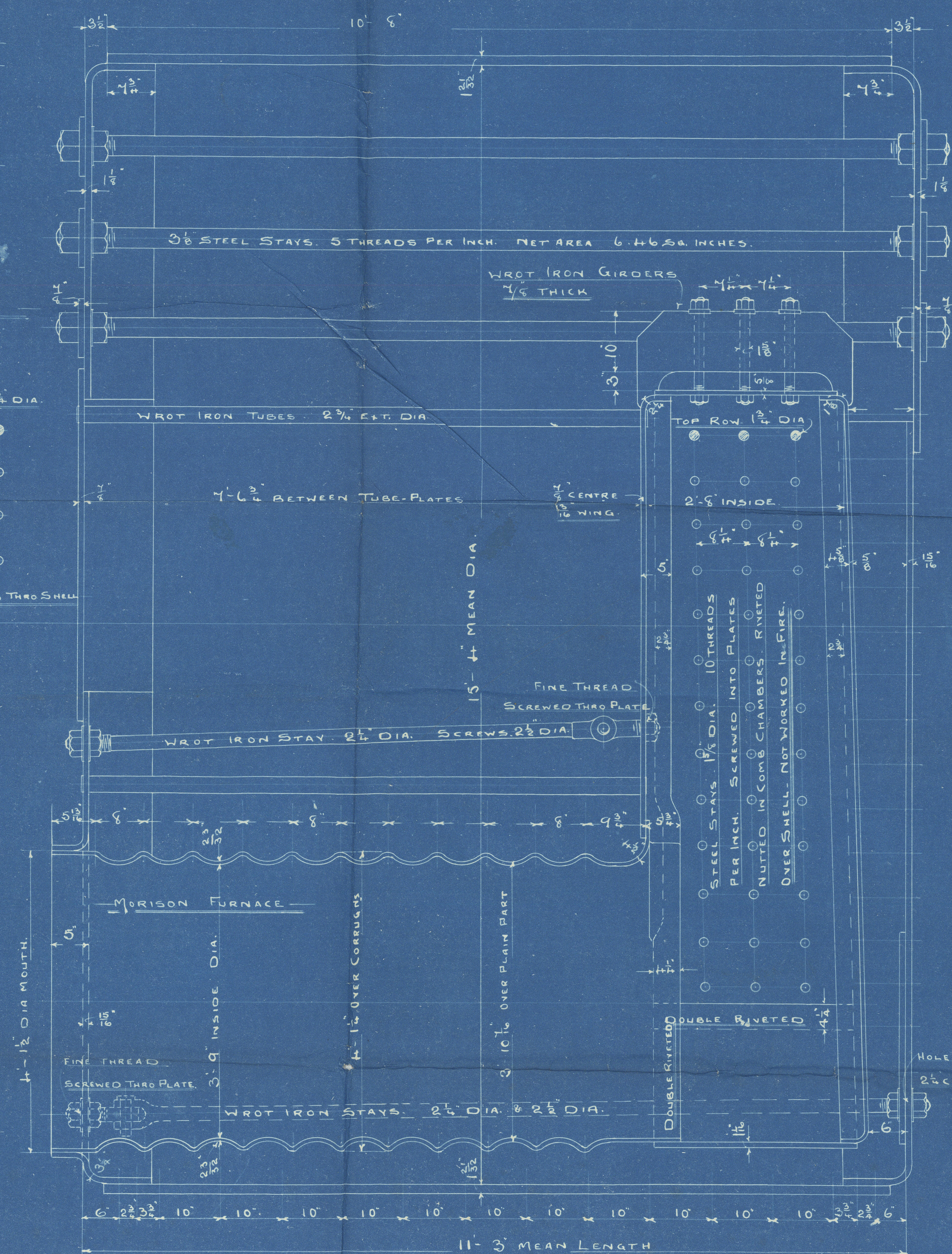
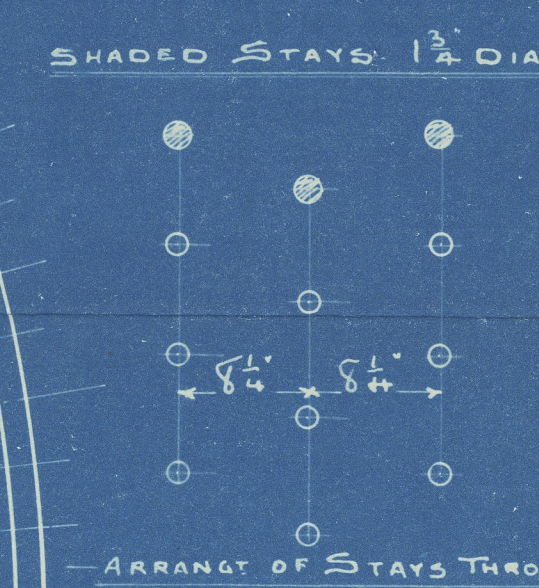
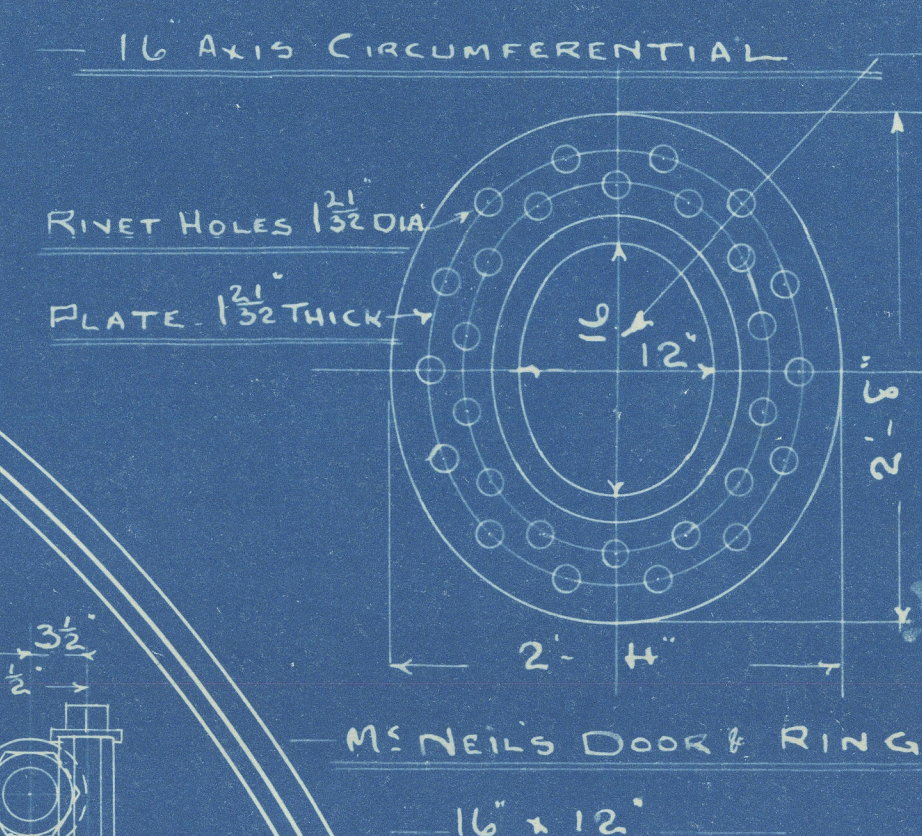
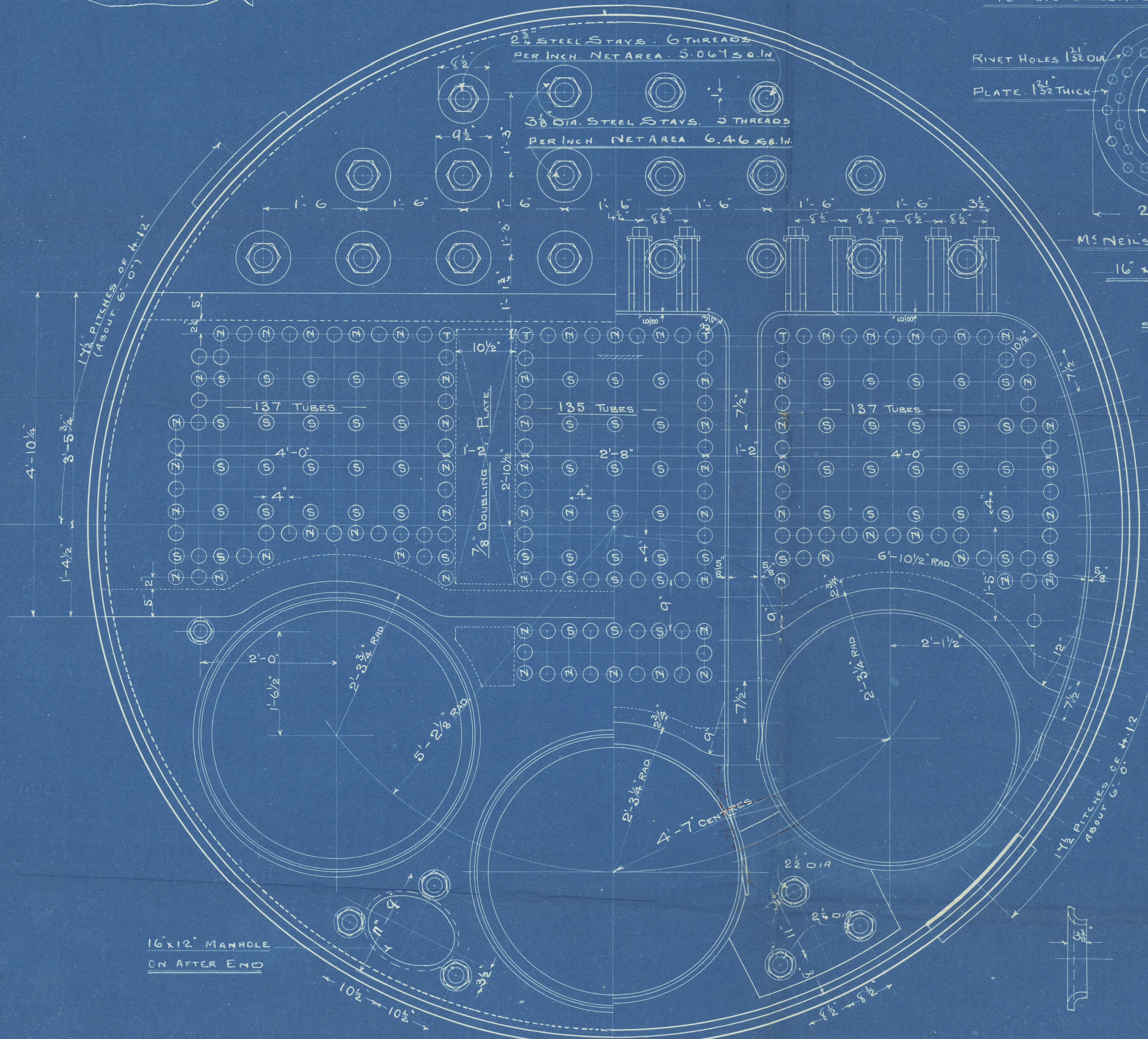
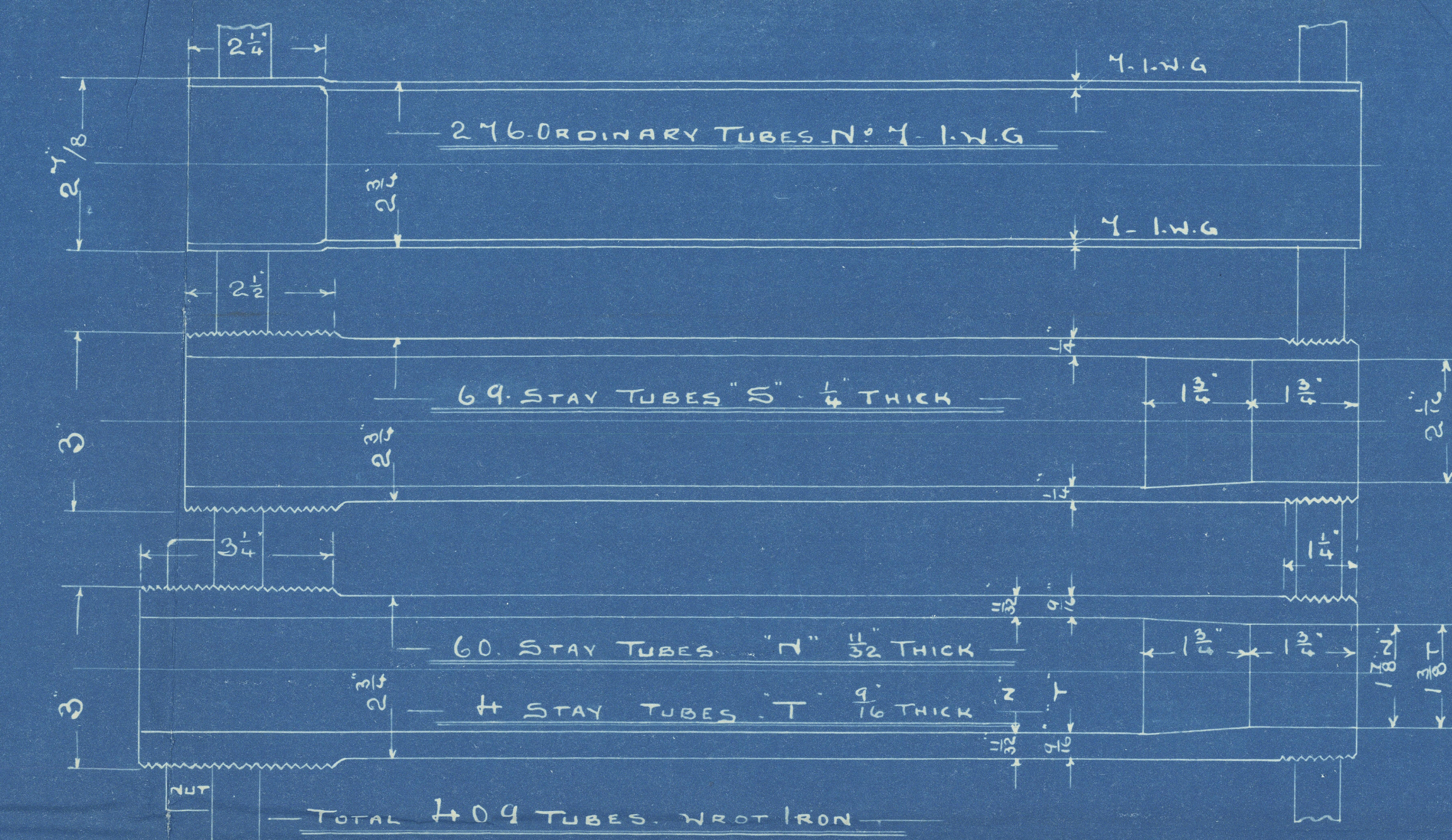


4/5/07

HEATING SURFACE	1 BOILER	2 BOILERS
TUBES	2222	
FURNACES	175	
COMB. CHAM.	240	
FRONT TUBE PLATE	31	
TOTAL	2678	5356
GRATE AREA (5-6 BARS)	62	124

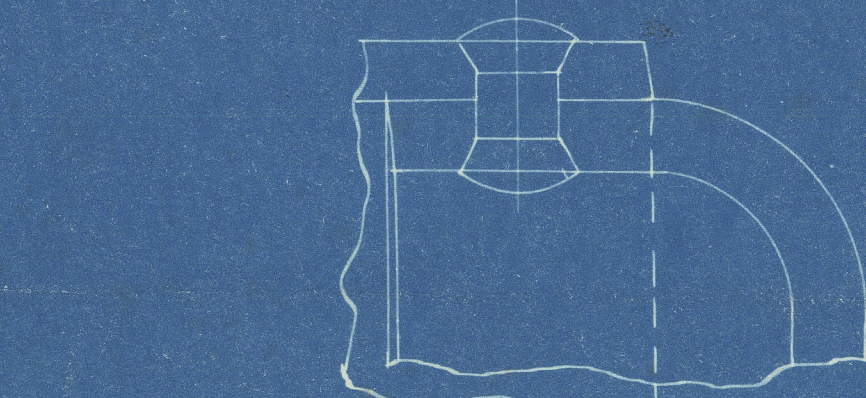


## PARTICULARS OF RIVETING.

SHELL	LONGITUDINAL SEAMS. DOUBLE BUTT STRAPS. RIVETED AS SHOWN.
END PLATES	STRENGTH OF PLATE 83.437% STRENGTH OF RIVET 90.2% CIRCUMFERENTIAL SEAMS. DOUBLE RIVETED AT ENDS AS SHOWN.
FURNACES & COM. CHAM.	LAP. DOUBLE RIVETED. 1½" RIVETS. 3½" PITCH. DOUBLE RIVETED. 7/8" RIVETS. 3" PITCH. SINGLE RIVETED. 7/8" RIVETS. 2½" PITCH. ALL PLATES & RIVETS STEEL. ALL HOLES DRILLED IN PLACE. MINIMUM TENSILE STRENGTH OF SHELL PLATES 29 TONS PER SQ. INCH. MINIMUM 32 MINIMUM BUTT STRAPS 28 MAXIMUM 32

WORKING PRESSURE 215 LBS PER SQ. INCH.

TEST PRESSURE 430

RIVETS IN FURNACES & COM.  
CHAMBERS TO BE FINISHED THUS.

— 2-OFF. —

— MAIN BOILER. — N° 390. —

— UNDER SURVEY OF BOARD OF TRADE &amp; LLOYDS. —

— SCALE — ONE INCH = ONE FOOT. —



Belfast

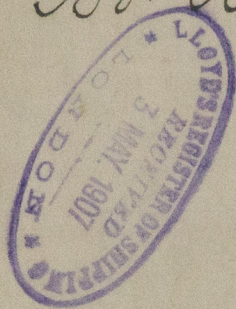
Harland & Wolff

SS. 390

Single End Boilers

SS. "Rotterdam"

Bel 6475.



W213-0168



© 2019

Lloyd's Register  
Foundation