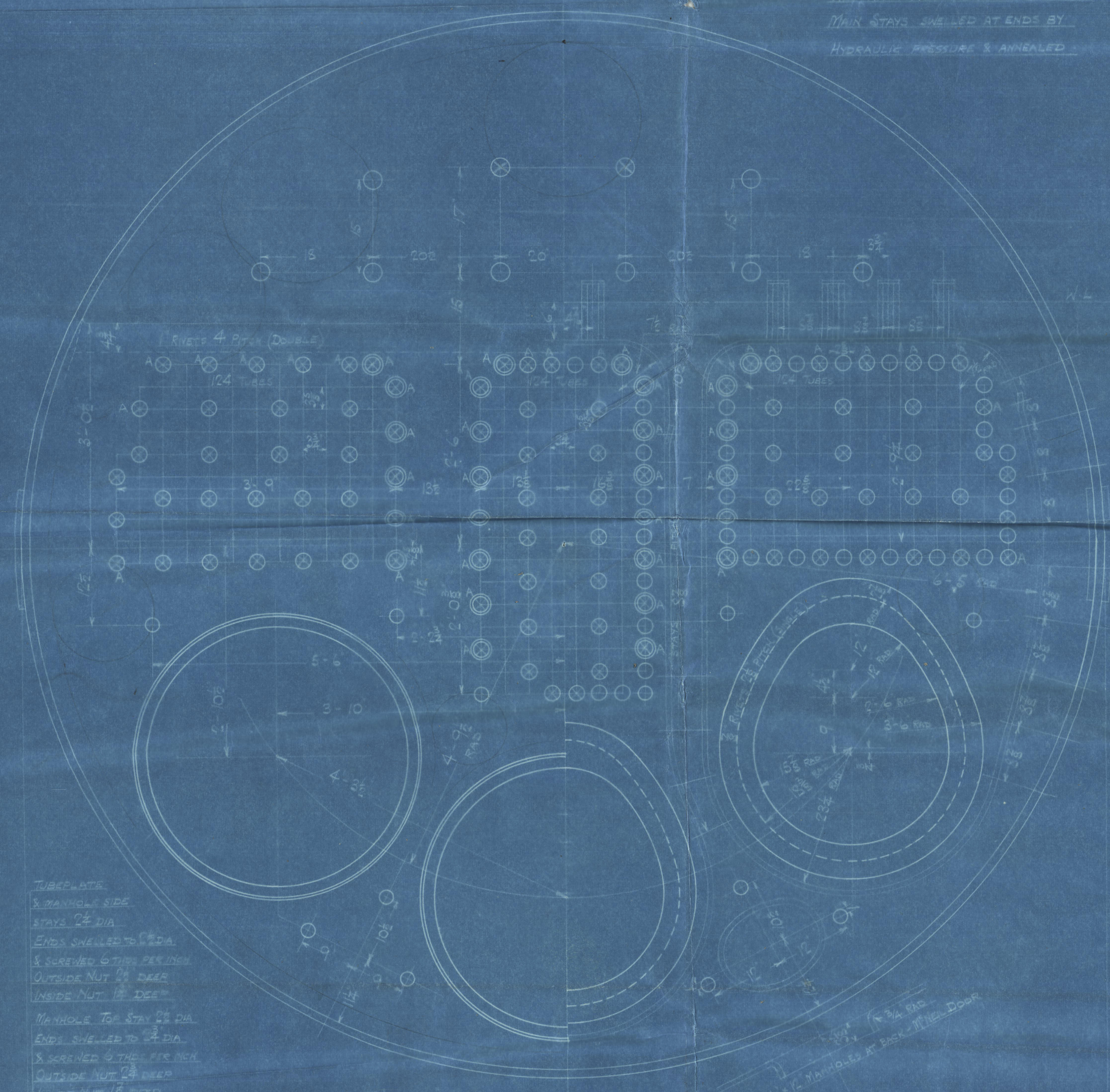


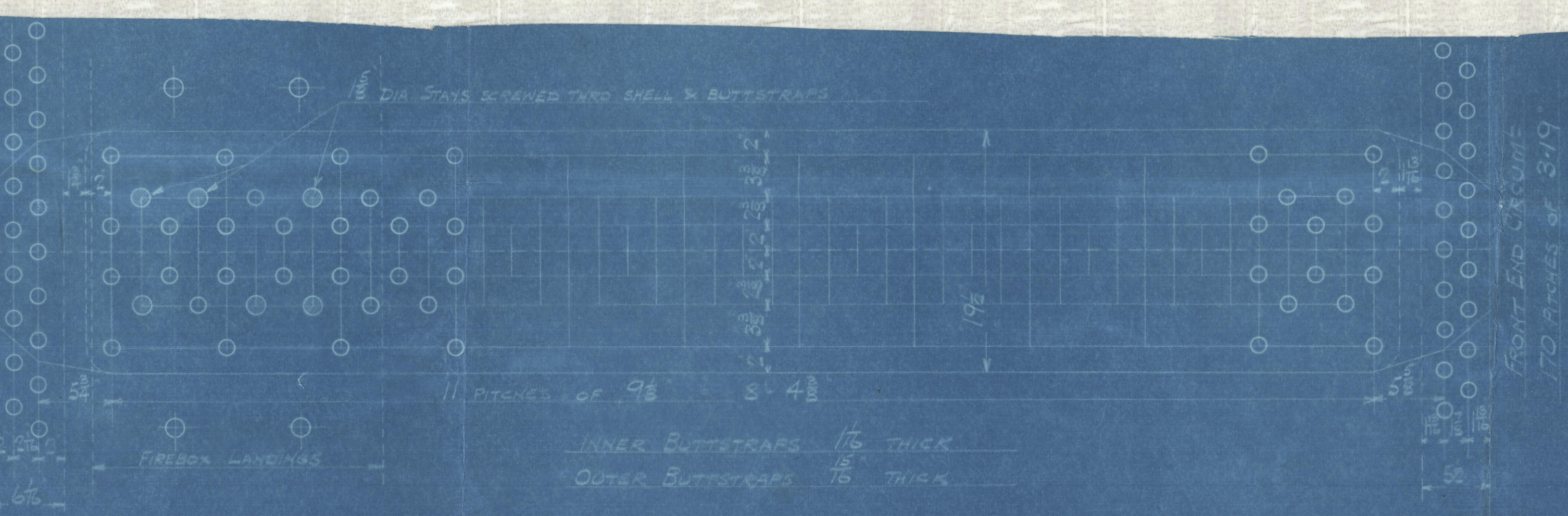
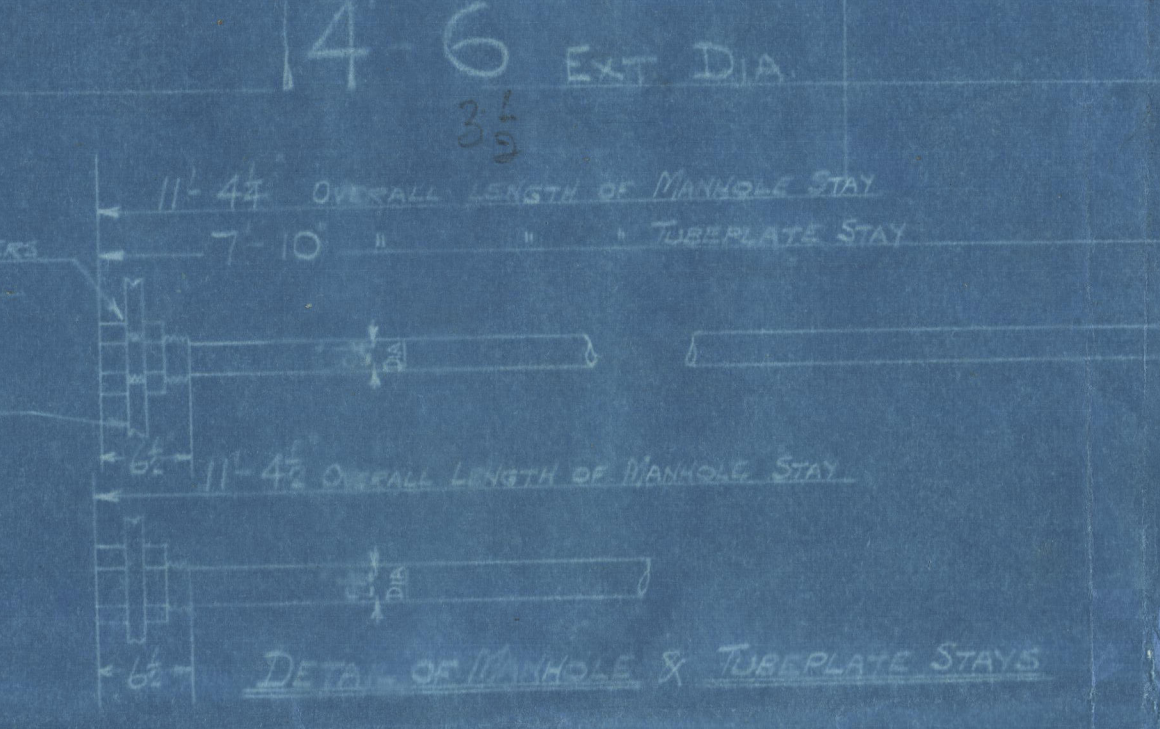
SURFACES	ONE BOILER	TWO BOILERS
TUBES	1784	3568
FIREBOX TOP AND SIDES	131	262
BACK	73	146
TUBE PLATE	50	100
FURNACES	40	80
TOTAL HEATING SURFACE	2178	4356
GRATE AREA (5-6 BARS)	574	1148
TUBE AREA	903	1806
WATER AREA	135	270
STEAM SPACE	365	730
GRATE AREA : HEATING SURFACE	1:37.57	
" : TUBE	1:31.05	
" : AREA	1:38.1	
" : WATER	1:4.35	
" : STEAM SPACE	1:1.34	
% POWER ABOVE FIREBOX	30%	
HEIGHT OF WATER	22 1/2 INCHES	45 INCHES

LIMITS OF TENSILE STRENGTH & MATERIAL		
SHELL & BUTTSTRAPS	29 to 35 TONS	
GRIDDERS	28 to 32 "	
OTHER PLATES	26 to 30 "	
FURNACES	26 to 30 "	SEMI-MARTENSITE
MAIN STAYS	28 to 32 "	
SCREENED STAYS	26 to 30 "	
RIVET BARS	26 to 30 "	

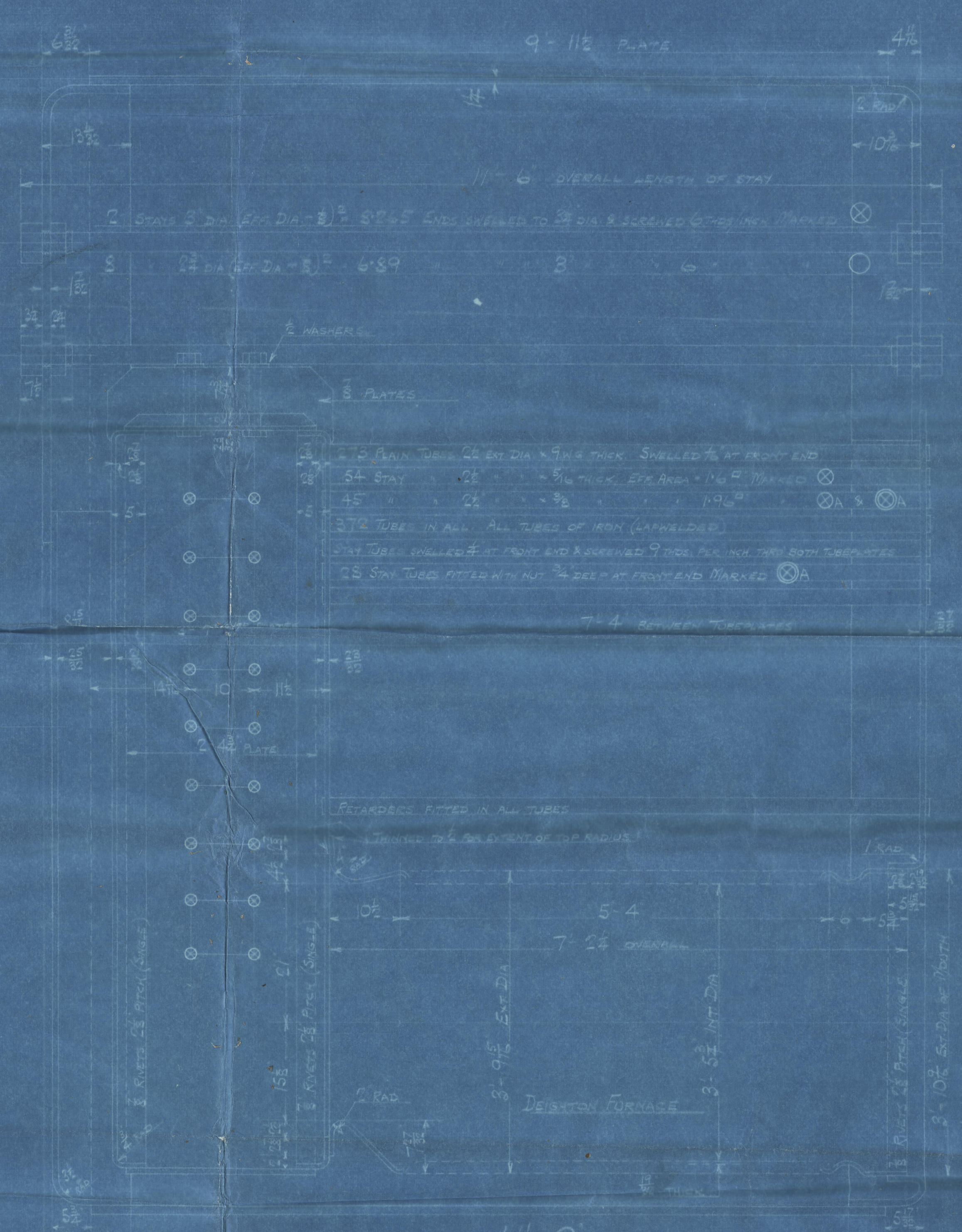
ALL RIVET HOLES DRILLED IN PLACE
MAIN STAYS SHELLS AT ENDS BY
HYDRAULIC PRESSURE & ANNEALED



TUBE PLATE
& DRUM SIDE
STAYS 2 1/2 DIA
ENDS SHELLS TO 2 1/2 DIA
& SURENED 6 THICK PER INCH
OUTSIDE NUT 2 1/2 DEEP
INSIDE NUT 1 1/2 DEEP
MANHOLE TOP STAY 2 1/2 DIA
ENDS SHELLS TO 2 1/2 DIA
& SURENED 6 THICK PER INCH
OUTSIDE NUT 2 1/2 DEEP
INSIDE NUT 1 1/2 DEEP

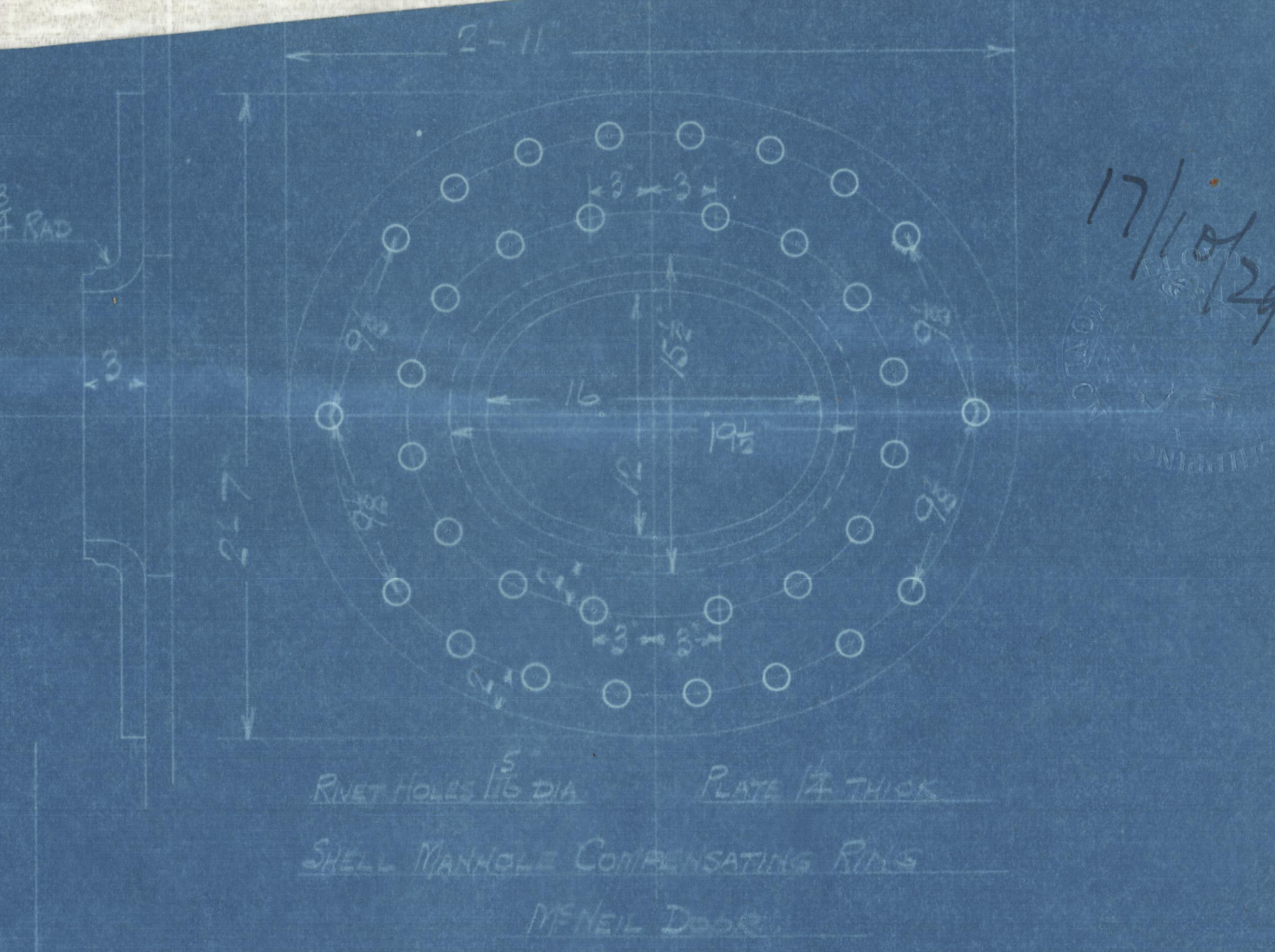


BACK END CIRCUMFERENCE
152 INCHES OF 3.57

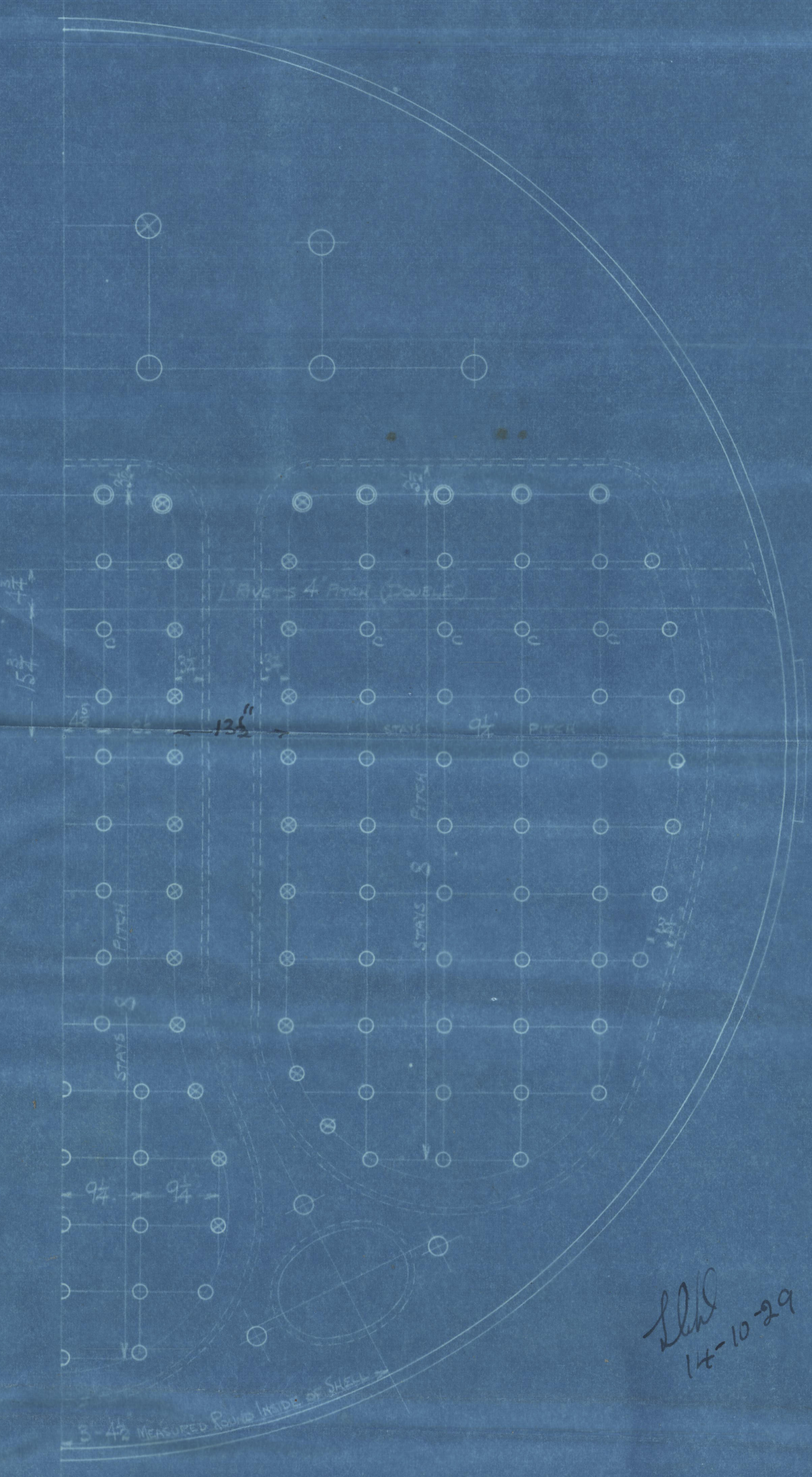


MAIN BOILER
2 OFF
CONT. N° 933
WORKING PRESSURE 200 LBS PER SQUARE INCH
TEST 350
TO PASS LLOYD'S SURVEY
SCALE: 1 X 1/2 = ONE FOOT

17/10/29



17/10/29



POSITION	MARK	DIA	DIA - 2/3	SCREWED
BACK	○	1 1/2	1.544	9
TOP, SIDES & BACK WIRE SPACE	○	1 1/2	2.199	9
BACK TOP ROW	○	1 1/2	2.555	9
CORNER	○	2	3.003	9

ALL FIREBOX STAYS SURENED THRO' BOTH PLATES AND NUT FITTED AT
LASH AND EXCEPT STAYS FROM MAIN FIREBOX TO SHELL AND STAYS
MARKED 'C' IN BACK BOTTOM END WHICH PROJECTS AND ARE CAULKED
ALL 1/8" NUTS 1 1/2 DEEP EXCEPT ON 3/4" DEEP TOP WHERE THE OUTSIDE
NUTS ARE 1 1/2 DEEP
ALL 1/8" NUTS 1 1/2 DEEP

07.34924

GLASGOW

DAVID ROWAN & Co L^{td}

(2) { MAIN
BOILERS N^o 933

WP-200 LBS

BURNTISLAND S B &

S/S N^o 162

N^o 18770

LLOYD'S TEST

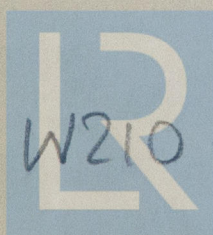
350 LBS

WP-200 LBS

8-7-30

J.D.M.

GLASGOW REPORT No. 50772



© 2020

W210-0038
Lloyd's Register
Foundation