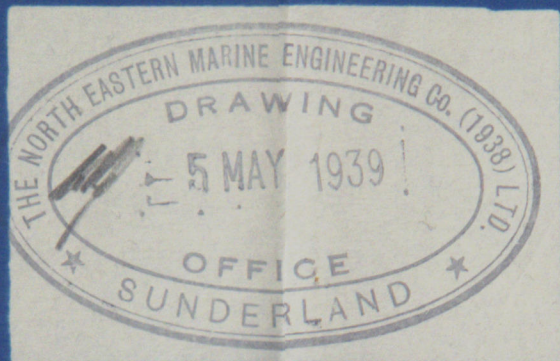


T.W.D.

THE NORTH EASTERN MARINE ENGINEERING CO (1938) LTD



SUNDERLAND SHAFTING

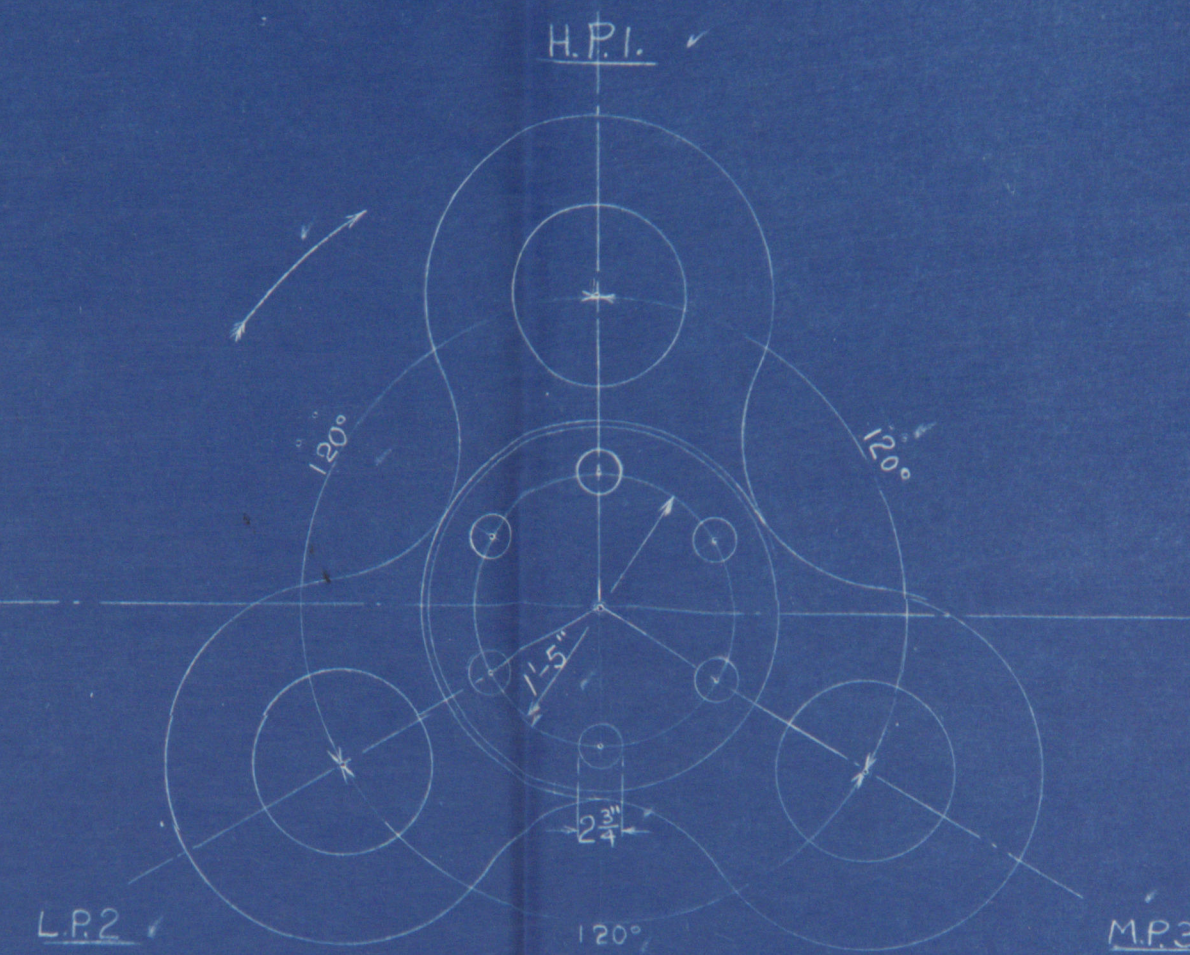
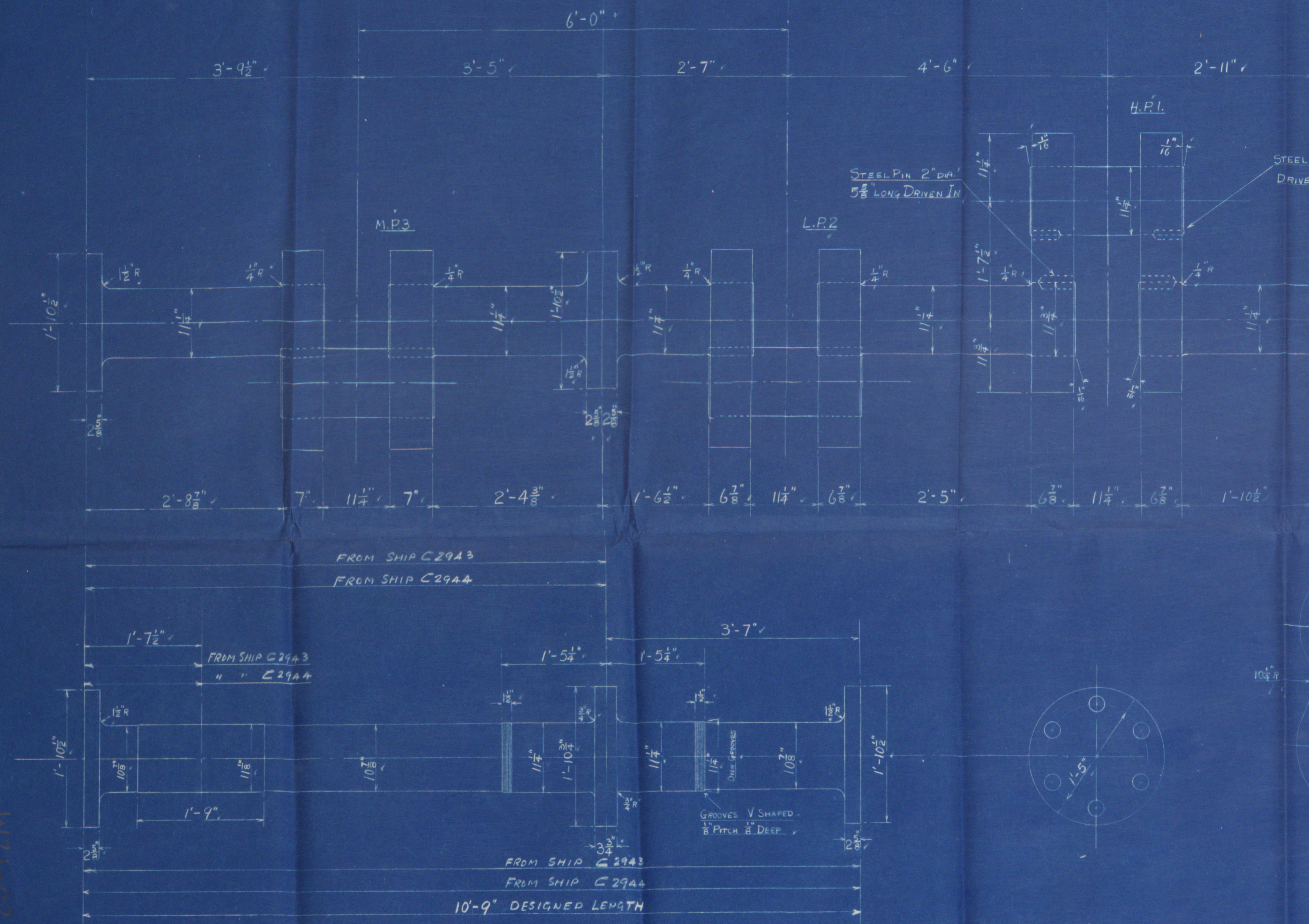
Scale:- 1 inch to a foot

ENGINE 18 1/2" x 29" x 52" x 220 LBS/D W.P.
39" STROKE

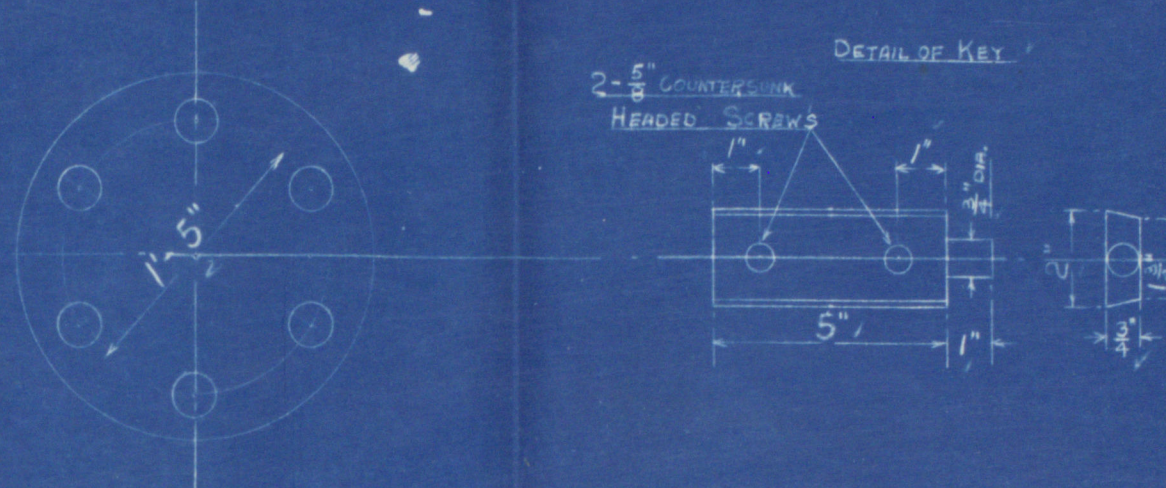
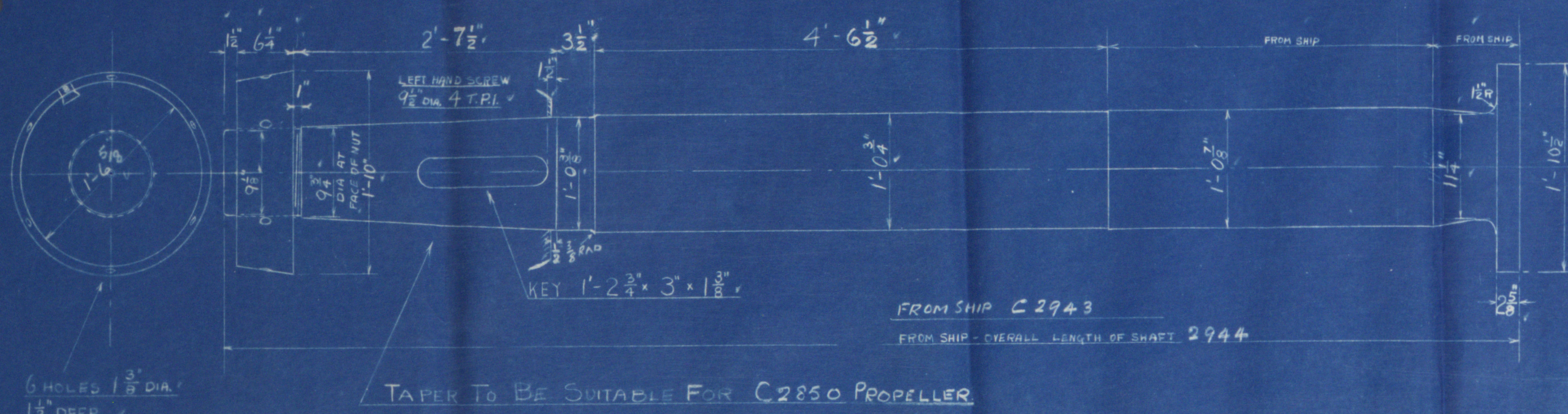
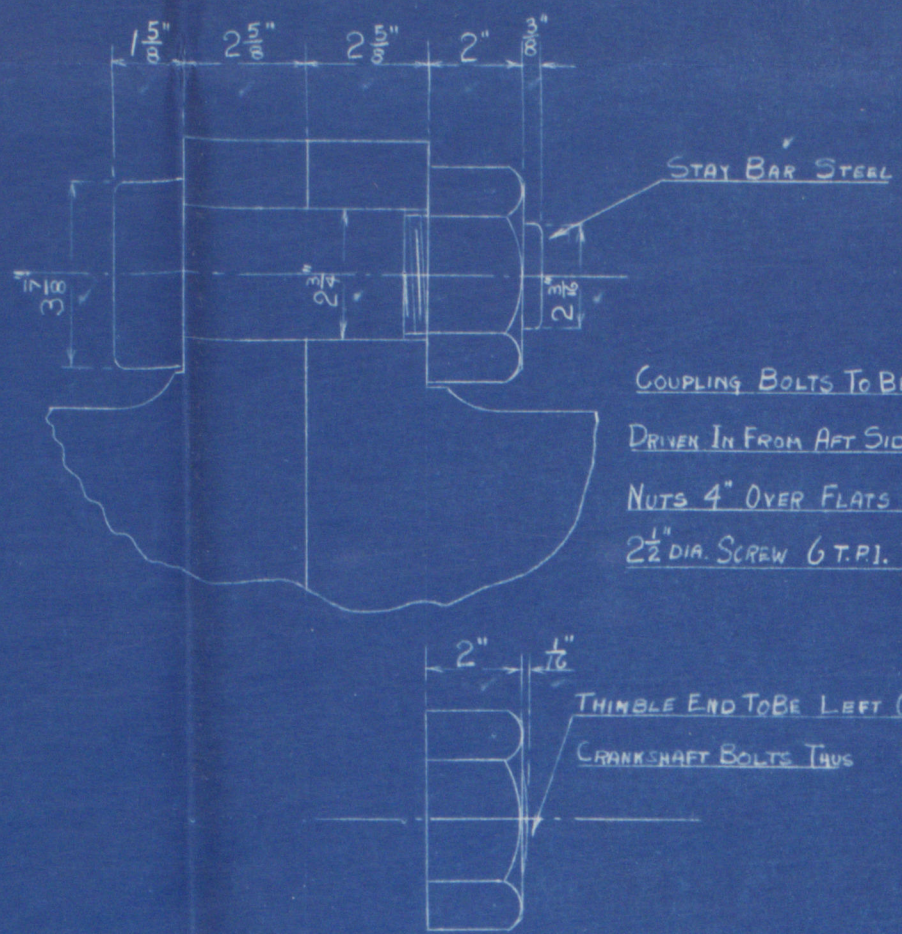
DIA OF PROPELLER 15'-3"

Schedule Ca

LLOYDS RULE SIZES	
CRANK SHAFT	10'-8" DIA
THRUST SHAFT	10'-8" DIA
TUNNEL SHAFT	10'-29" DIA
PROPELLER SHAFT	12'-12" DIA



AFTER END LOOKING FORWARD



T.M.
15-5-39

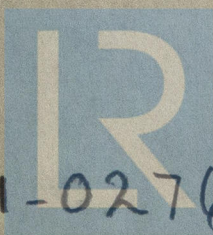
CONTRACT 2943
CONTRACT 2944

Drawing N° 10595

The R.E. Marine Eng. Co. Inc.,
Cor. 2943-4.
Shafter.

S.S. Cor. 2943-4
SUNDERLAND RPT. No. 32715

W21-0276



© 2019

Lloyd's Register
Foundation