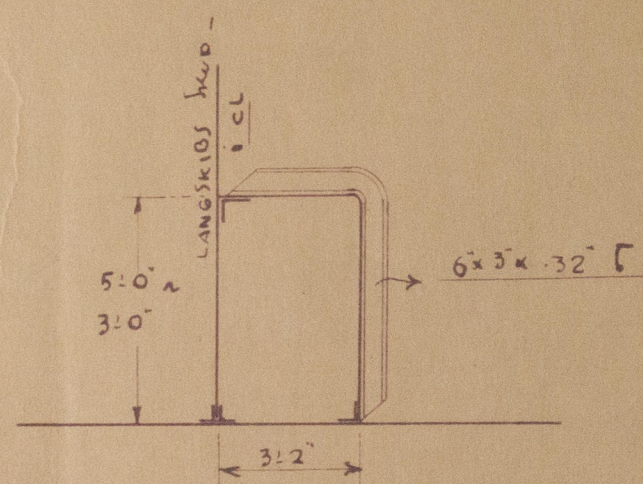
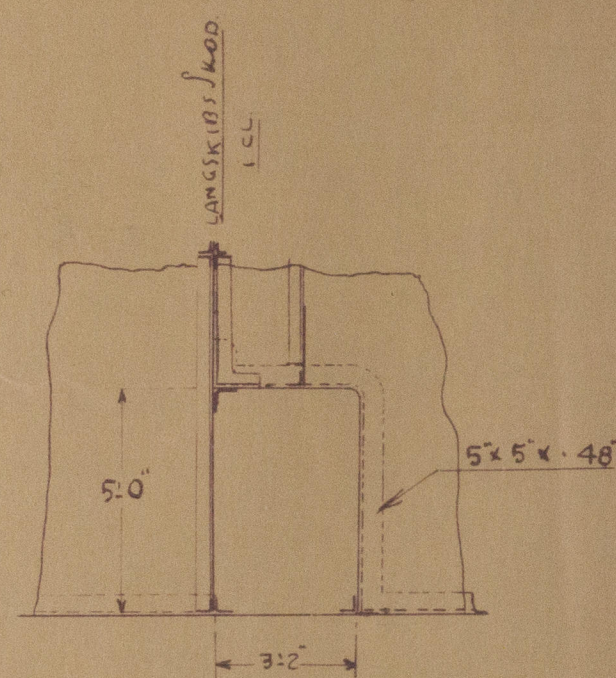


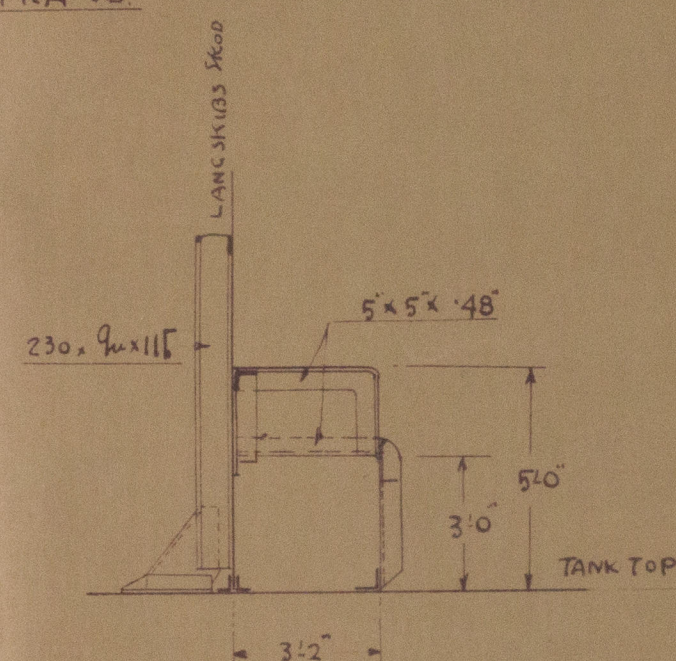
5B^S SIDE AF RØRTUNNEL
SET FRA 80.



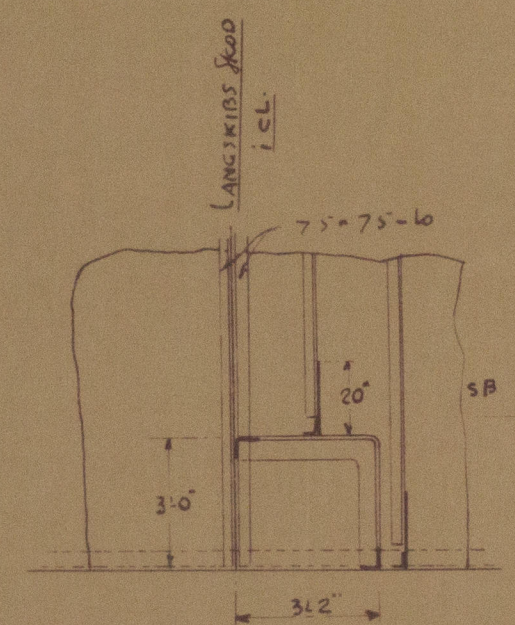
AFSLUTNING AF
RØRTUNNEL



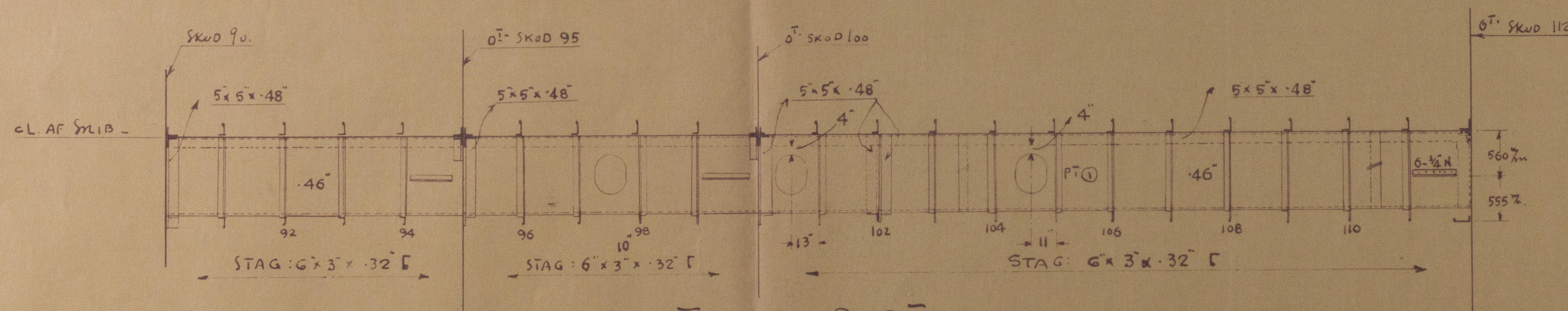
HUL I SKUD 95 & 100



SPT. 102. SET AGT. FRA.



SKUD 112 SET AGT. FRA.



TOP AF RØRTUNNEL

"PETER MÆRSK"
"PIPE TUNNEL THROUGH OIL DEEP TANK"
RØRTUNNEL GENN. OLIE NØJTANK
1/4 - 10"

- NITNING -

4 1/2" SØM 3/4" NGL. 2 5/8" DEL. DUBB. NIT.
5" LAPPER. 3/4" " 2 5/8" " " "
RAMMEVINKLER BEGGE FL. 3/4" " 3 3/4" " I HVER REKRE
STAG: I HVER ENDE ANBRINGES 5 STK. 3/4" NGL. MED 3" DELING.
ELLERS HOLDES 3/4" NGL. 4 1/2" DEL.

NOTER

RØRTUNNEL STEMME OLIE TÆT
FOR 18" x 15" MANDEHULLER SE NORMALTEGN.
SPANTBÆSTAND - 735%

HONGKONG & WHAMPOA DOCK CO. LTD.
DRAWING NO. 1030
10-35

" " *S.S. Peter Maersk*

*Pipe tunnel through
oil deep tank.*

Rpt No Cpn 9736



© 2021

Lloyd's Register
Foundation

W208-0133