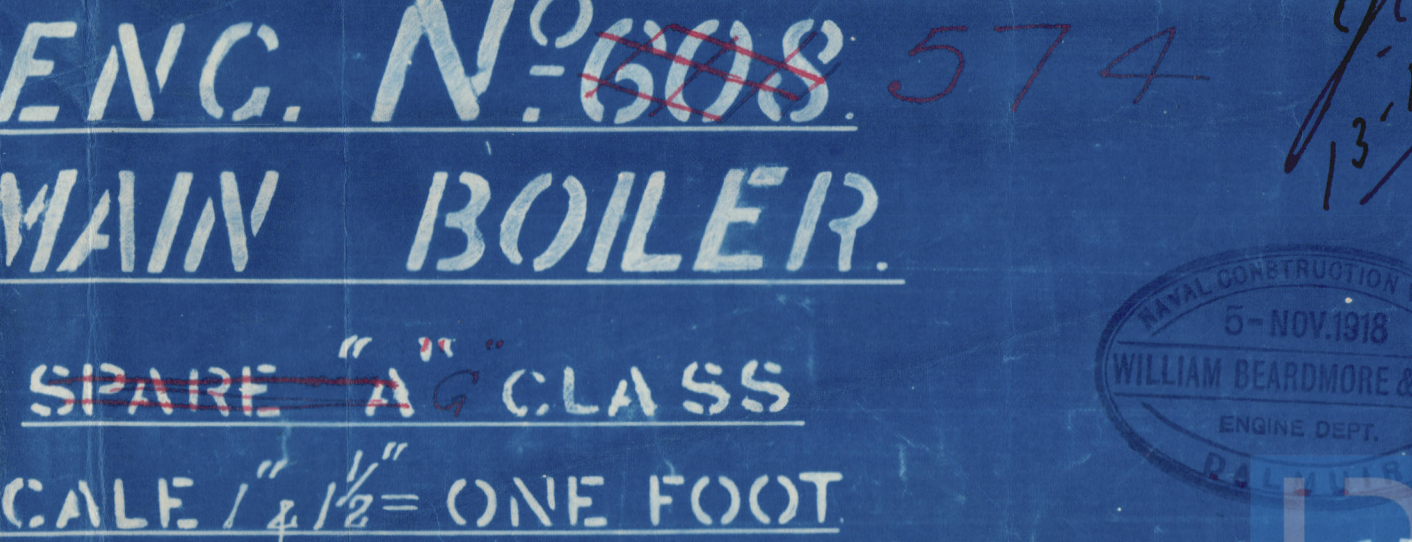
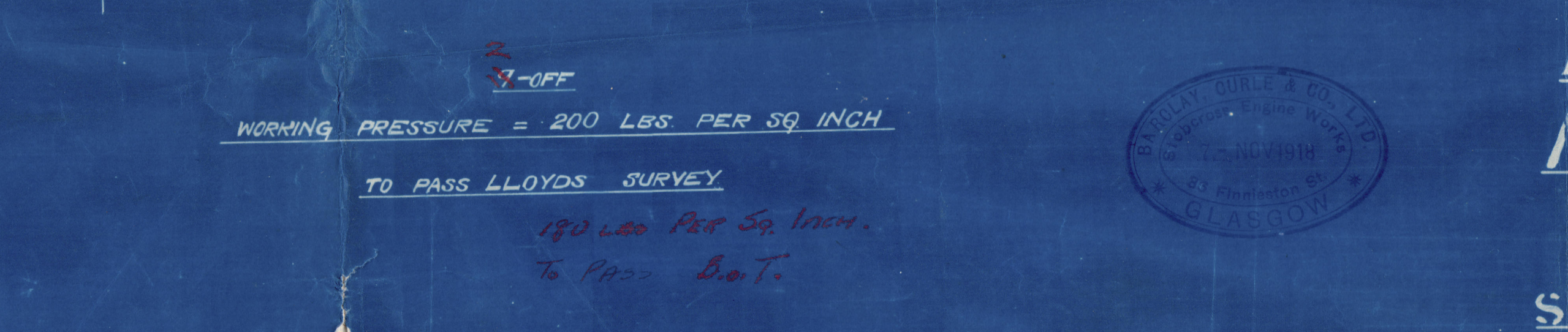
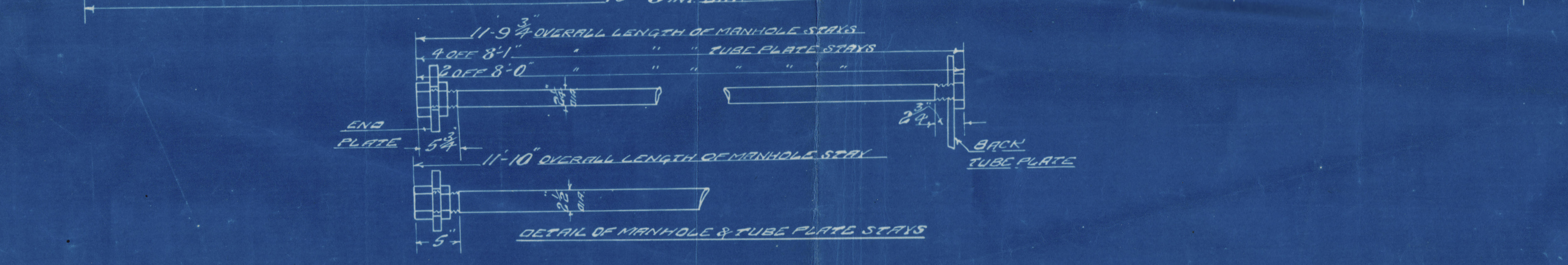
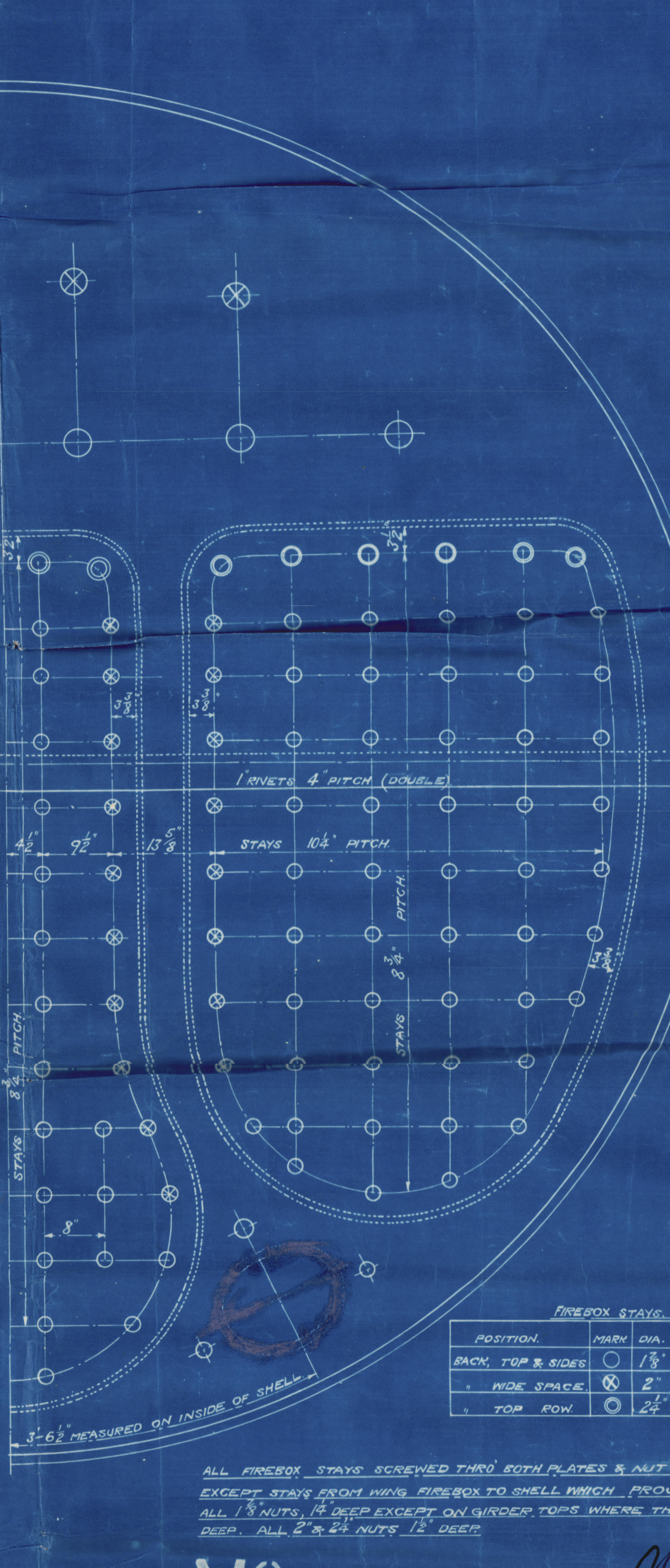
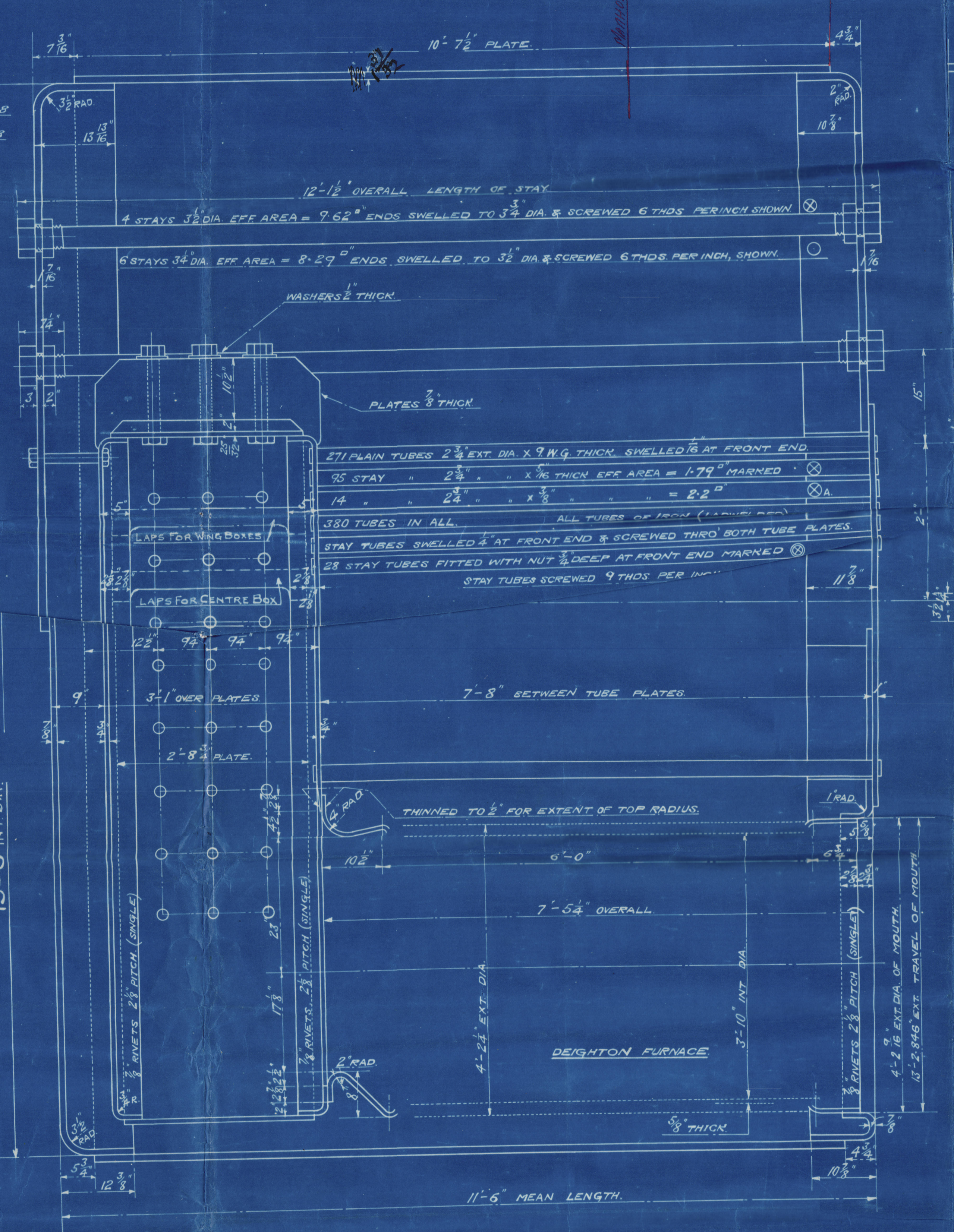
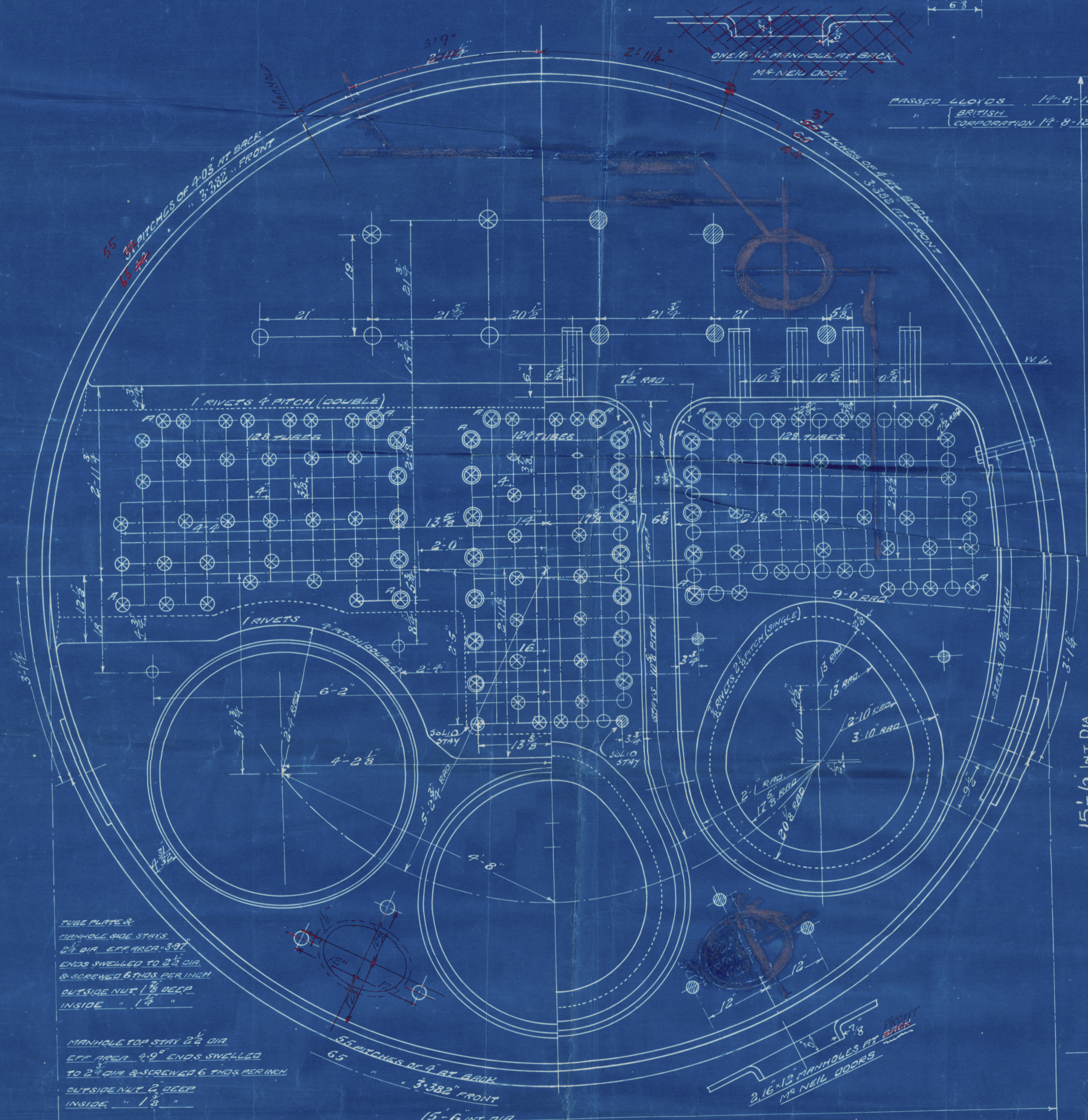
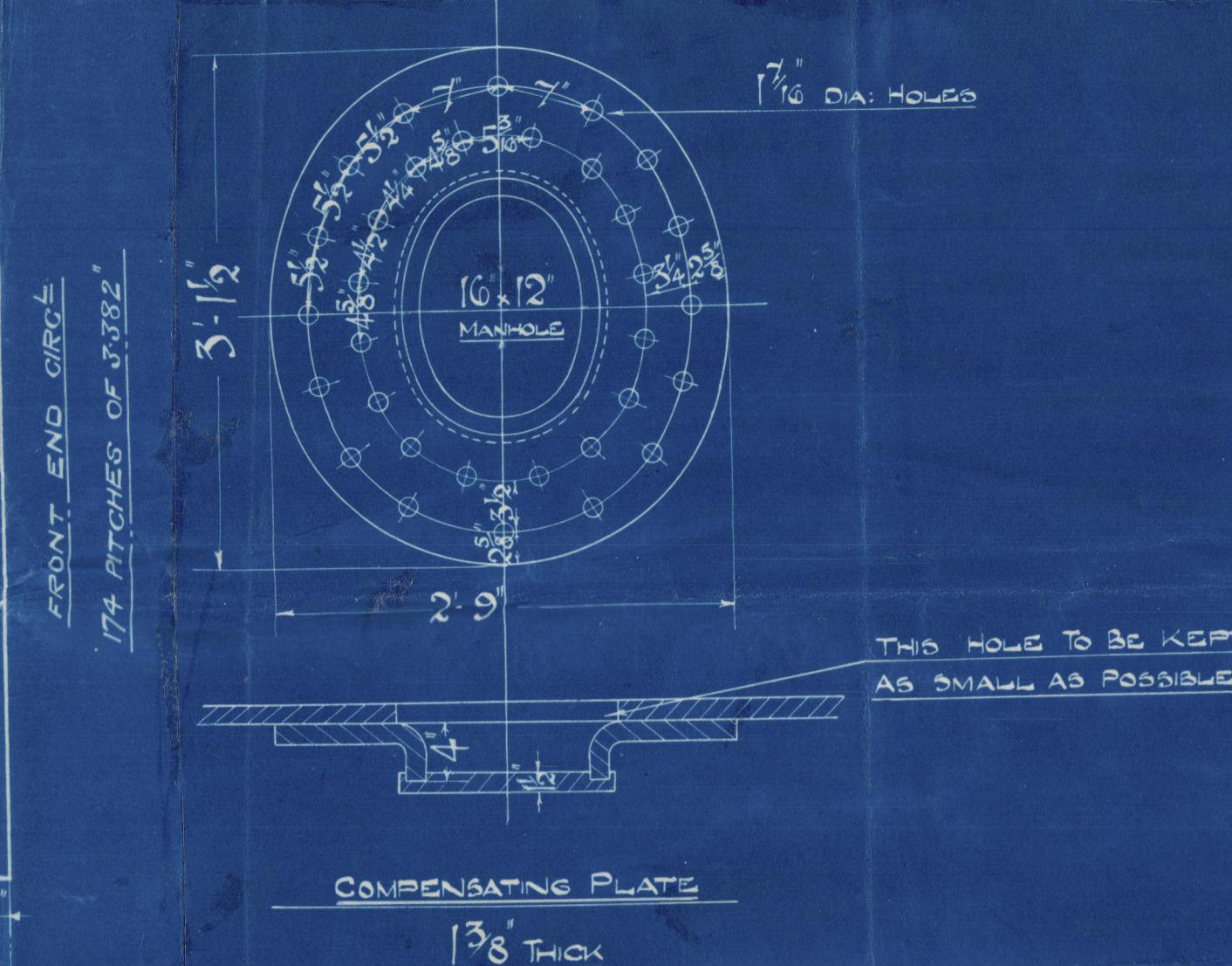
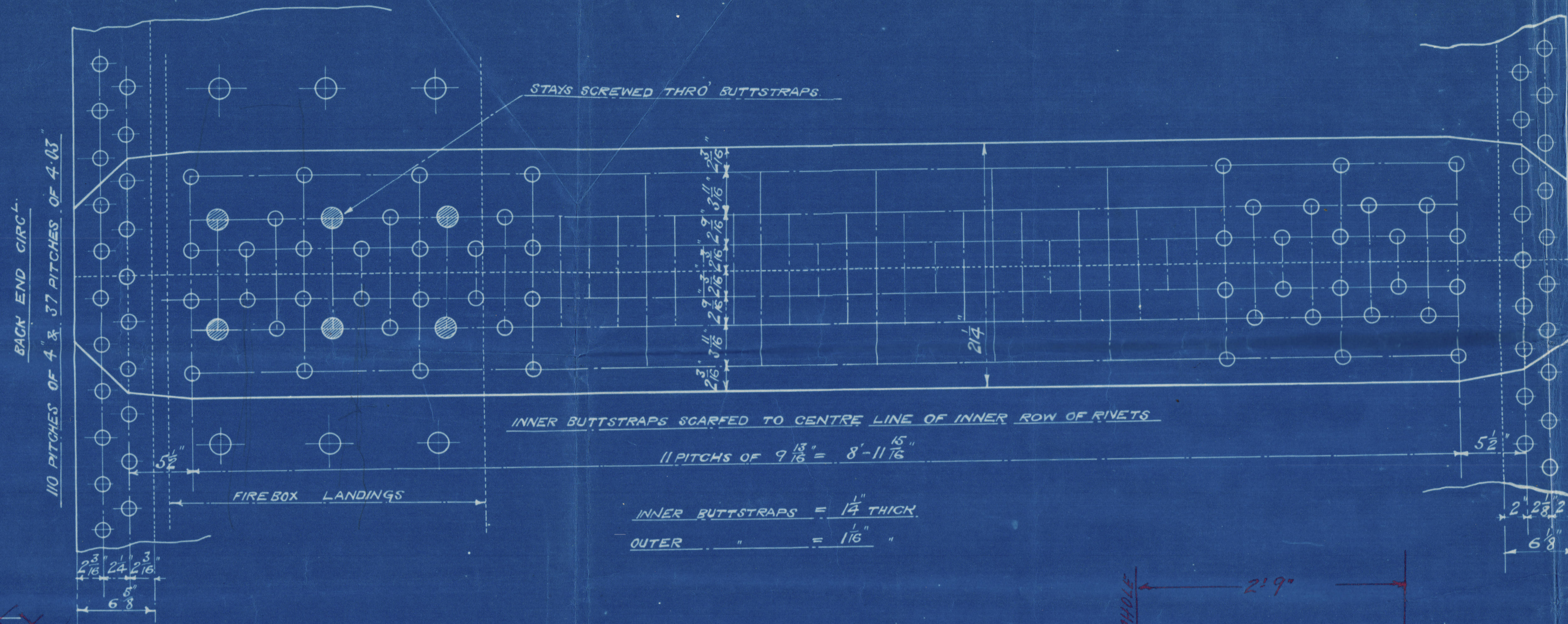


SURFACES	ONE BRICK 3/4 INCHES	ONE BRICK 3/4 INCHES
TUBES	2100 #	6300 #
DRY BOX TOP & SIDES	158 "	474 "
" " " " " "	82 "	246 "
" " " " " "	55 "	165 "
DRY BOXES	161 "	483 "
TOTAL HEATING SURFACE	2536 #	7608 #
DRY BOXES (5' 6" BARS)	63.3 #	190 #
TUBES	1131 "	3392 "
WATER	160 "	480 "
STEAM SPACE	514 cu ft	1542 cu ft
WATER HEATING SURFACE	140.4 "	421.2 "
" " " " " "	1.37.2 "	4.116.4 "
" " " " " "	5.56.1 "	16.683.1 "
" " " " " "	1.2.59 "	3.777.7 "
" " " " " "	1.8.1 "	5.43.1 "
" " " " " "	32.2 "	96.6 "
WEIGHT OF WATER	265 TONS	795 TONS

PIPEWORK	LONG	BACK END	FRONT END
RUST HOLE DIA	1 1/16	1 1/16	1 1/16
PITCH	9.8/26	4.8/10.3	3.382
% PLATE	85.3	6.2	61.2
% RIVET	89.4	50.1	49.4

LIMITS OF TENSILE STRENGTH & MATERIAL	28 TO 32 TONS	28 TO 32 TONS
SHELL BUTTSTRAPS & GIRDERS	26 " 30 "	26 " 30 "
OTHER PLATES	26 " 30 "	26 " 30 "
DRY BOXES	26 " 30 "	26 " 30 "
MANHOLE STAYS	26 " 30 "	26 " 30 "
DRY BOX STAYS	26 " 30 "	26 " 30 "
RIVET STAYS	26 " 30 "	26 " 30 "

ALL RIVETHOLES DRILLED IN PLATE
MAIN STAYS SWELLED AT ENDS BY
HYDRAULIC PRESSURE AND RIVETED



WORKING PRESSURE = 200 LBS PER SQ INCH
TO PASS LLOYDS SURVEY
180 LBS PER SQ INCH
TO PASS LLOYDS SURVEY

ENC. N° 608 574
MAIN BOILER.

SPARE "A" CLASS
SCALE 1 1/4" = ONE FOOT

13190

Barclay Curle & Co

S.E. Main Boilers


Standard & Glass

No 574

Built by W Beardmore & Co Ltd

SS "OTAKI"

N.N. "Pacific Star."

GLASGOW REPORT No. 39597. 



W208-0083



© 2021
Lloyd's Register
Foundation