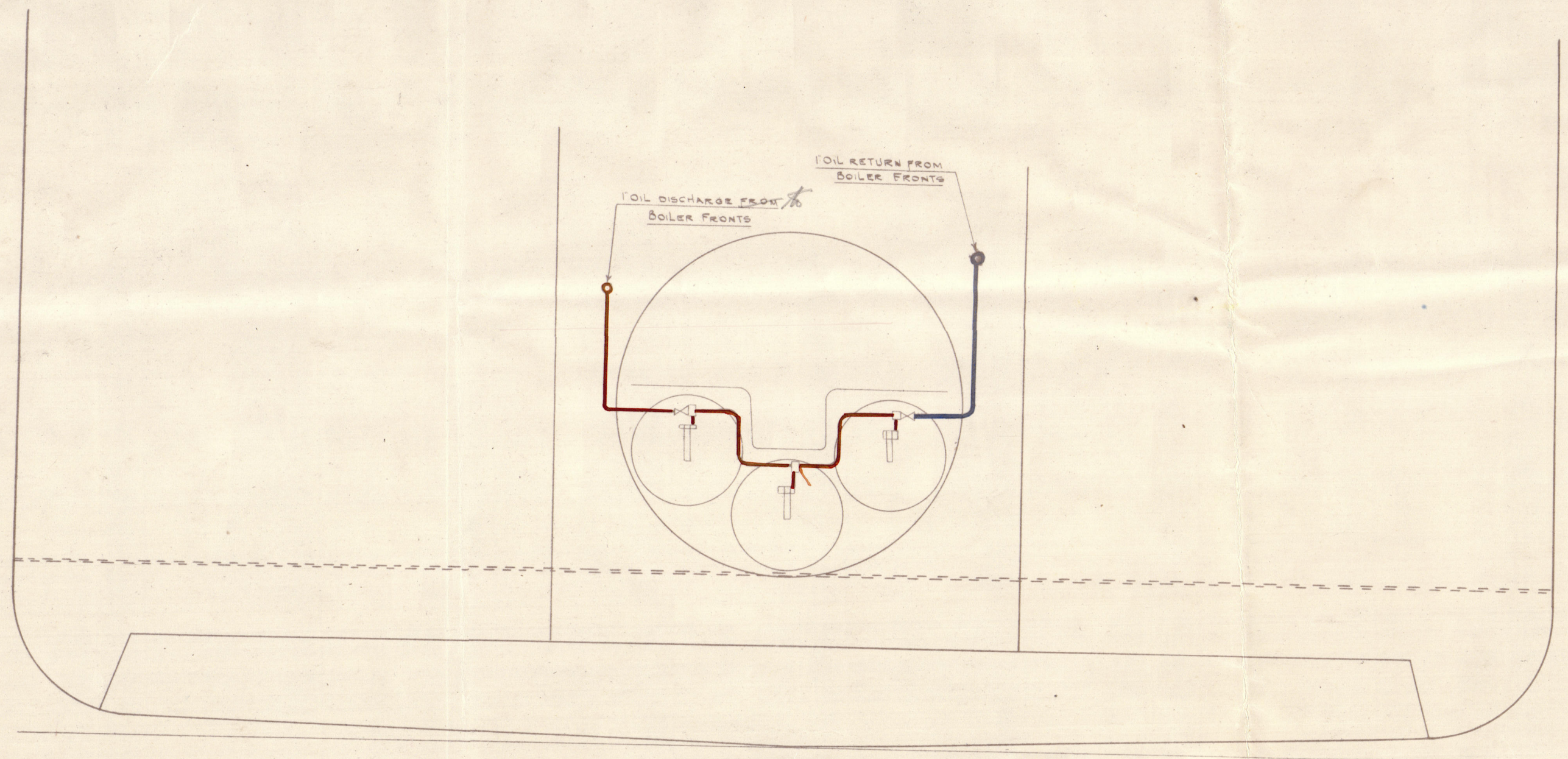
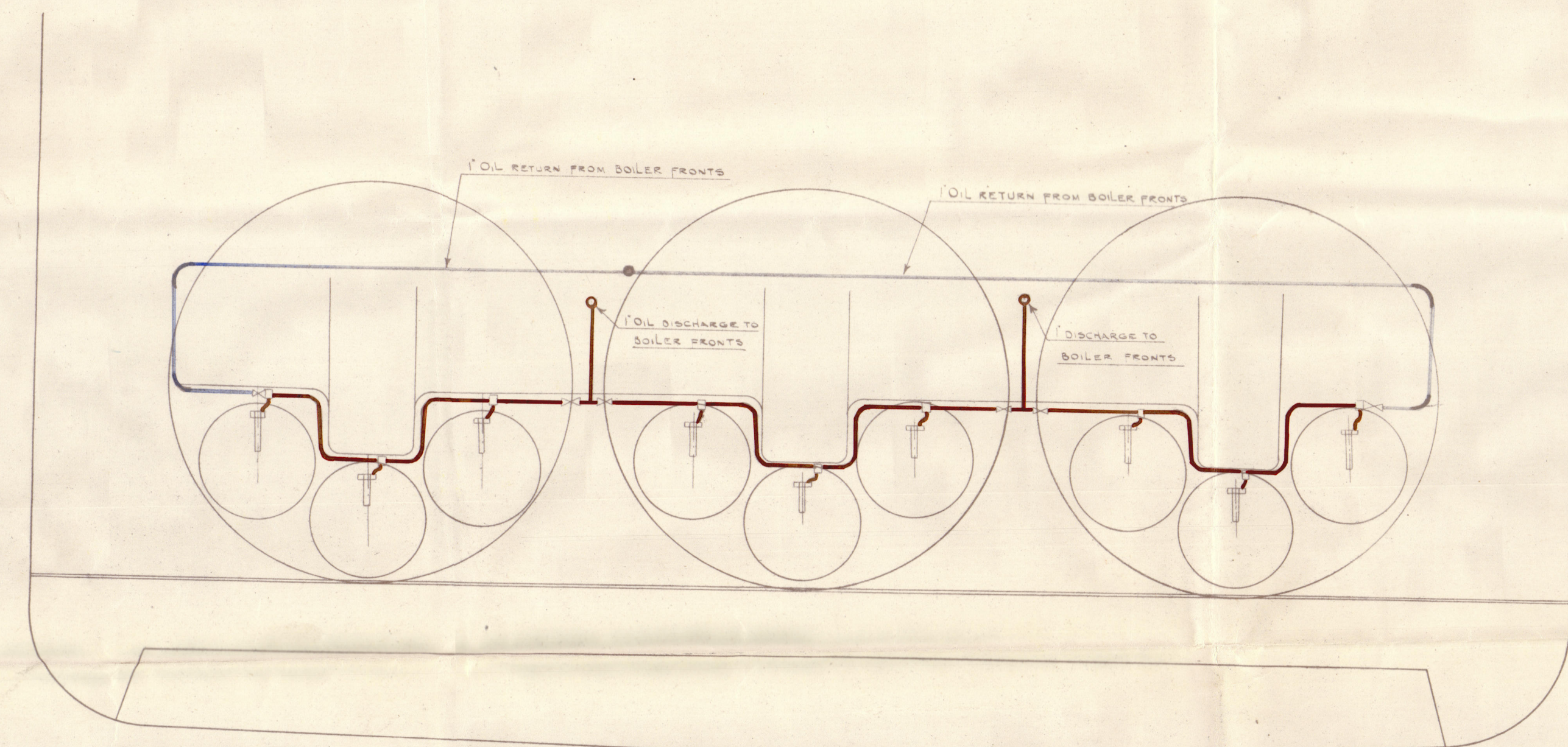


S. S. "NIGARISTAN" OIL BURNING ARRANGEMENT

SCALE 1/4" = 1 FOOT

SECTION LOOKING ON BOILER FRONTS

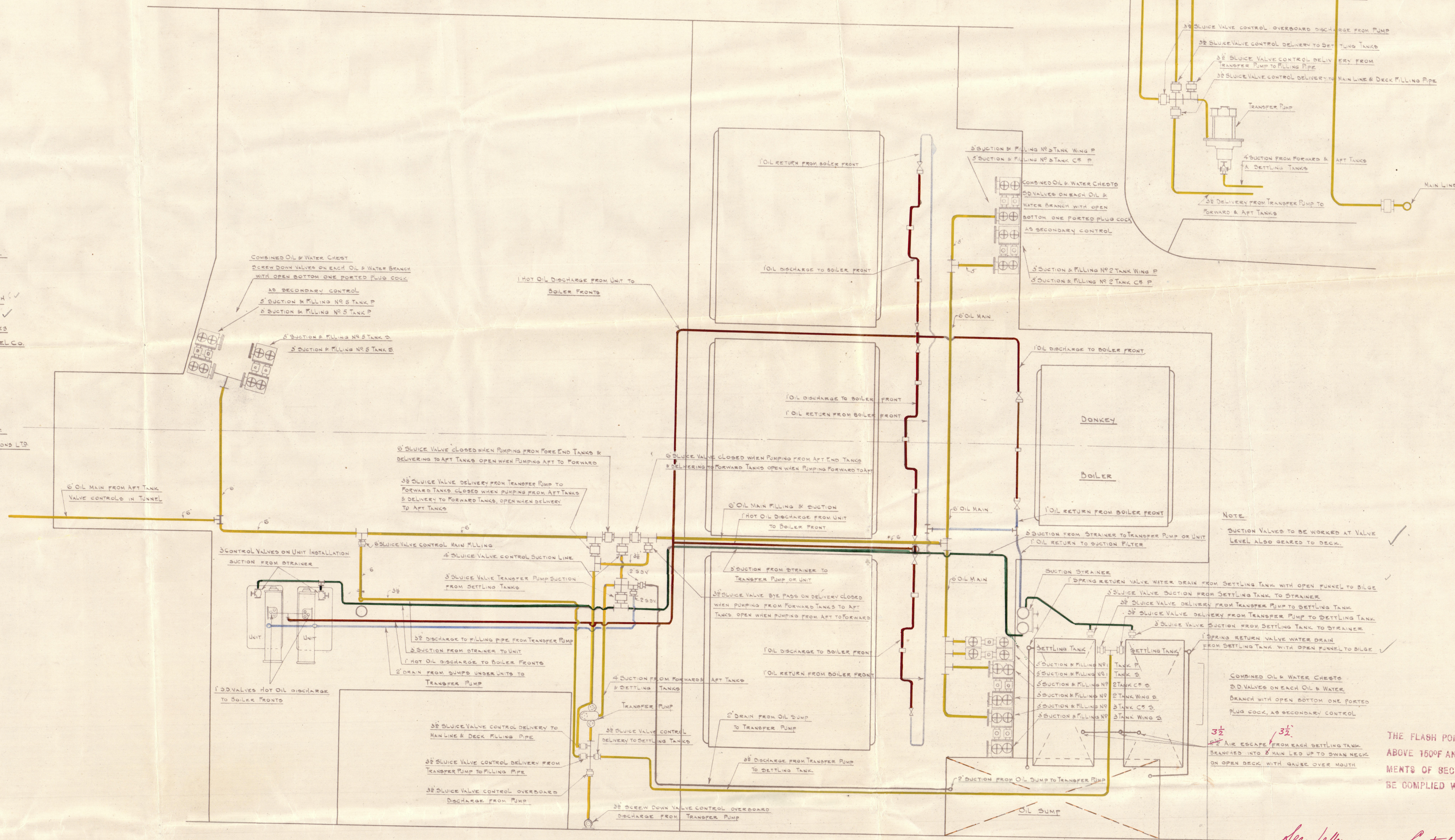


SECTION LOOKING ON DONKEY BOILER FRONT

- OIL FUEL SUCTIONS FROM OIL TANKS & DELIVERIES SHOWN THIS
- SUCTION FROM STEAMER TO UNIT SHOWN THIS
- HOT OIL DISCHARGE TO BOILER FRONTS SHOWN THIS
- OIL RETURN FROM BOILER FRONTS SHOWN THIS
- DRAINS & AIR PIPES SHOWN THIS

NOTES

OIL SUCTION, FILLING & DELIVERY PIPE LINES TO BE OF SOLID DRIVEN STEEL OR LAPWELDED WROTH IRON WITH STEEL FLANGES 1/8" THICK MACHINED ON FACE & BORED ON WITH VANISHING THREAD JOINTED WITH CARDBOARD 1/4" THICK & 1/8" ROLL BLOWN THROUGH WITH AIR AFTER ERECTION & TESTED TO (450 LBS) PER SQ INCH OIL DISCHARGE PIPE LINE OF SOLID DRIVEN STEEL WITH FLANGES 5/8" THICK MACHINED ON FACE & JOINTED WITH 1/8" THICK HP JOINTING. ALL BRANCH PIECES & VALVES BETWEEN SUCTION STEAMER & BURNERS SUPPLIED BY CLYDE OIL FUEL CO. 3/4" SOLID DRIVEN STEEL PIPES BETWEEN OIL MAIN DISCHARGES & BURNERS SUPPLIED BY CLYDE OIL FUEL CO. IN STRAIGHT LENGTHS WITH NECESSARY NIPPLES, FOR BENDING TO PIPE ENDS. SEE SPECIAL PLAN FOR PIPES OUTSIDE MACHINERY SPACE. SEE SPECIAL PLAN FOR HEATING COILS TO DOUBLE BOTTOM TANKS. UNIT INSTALLATION, TRANSFER PUMP, OBSERVATION TANK, STARTING BOILER, & ALL COPPER STEAM & EXHAUST PIPES SUPPLIED BY ALEXANDER STEPHEN PIPES LTD.



NOTE: SUCTION VALVES TO BE WORKED AT VALVE LEVEL ALSO BEARED TO DECK.

3 1/2" AIR ESCAPE FROM EACH SETTLING TANK BRANCHED INTO 2" MAIN LED UP TO SHANK NAIL ON OPEN DECK WITH GAUGE OVER MOUTH

THE FLASH POINT OF THE OIL FUEL TO BE ABOVE 160°F AND THE REMAINING REQUIREMENTS OF SECTION 48 OF THE RULES TO BE COMPLIED WITH.

See Letter re Control of steam to all Oil Fuel Pressure Pumps

Nigaristan

GLASGOW REPORT No. *42840.*

W202-0072



© 2020

Lloyd's Register
Foundation