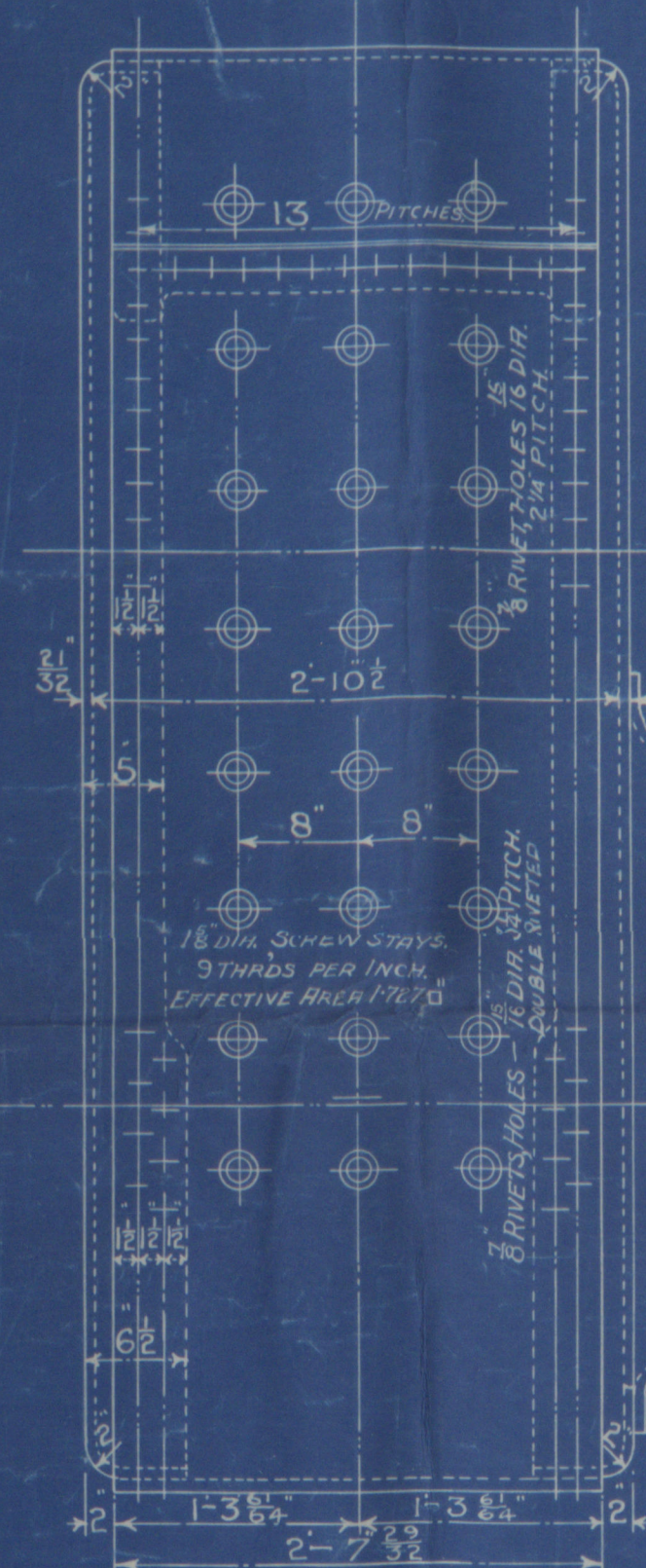
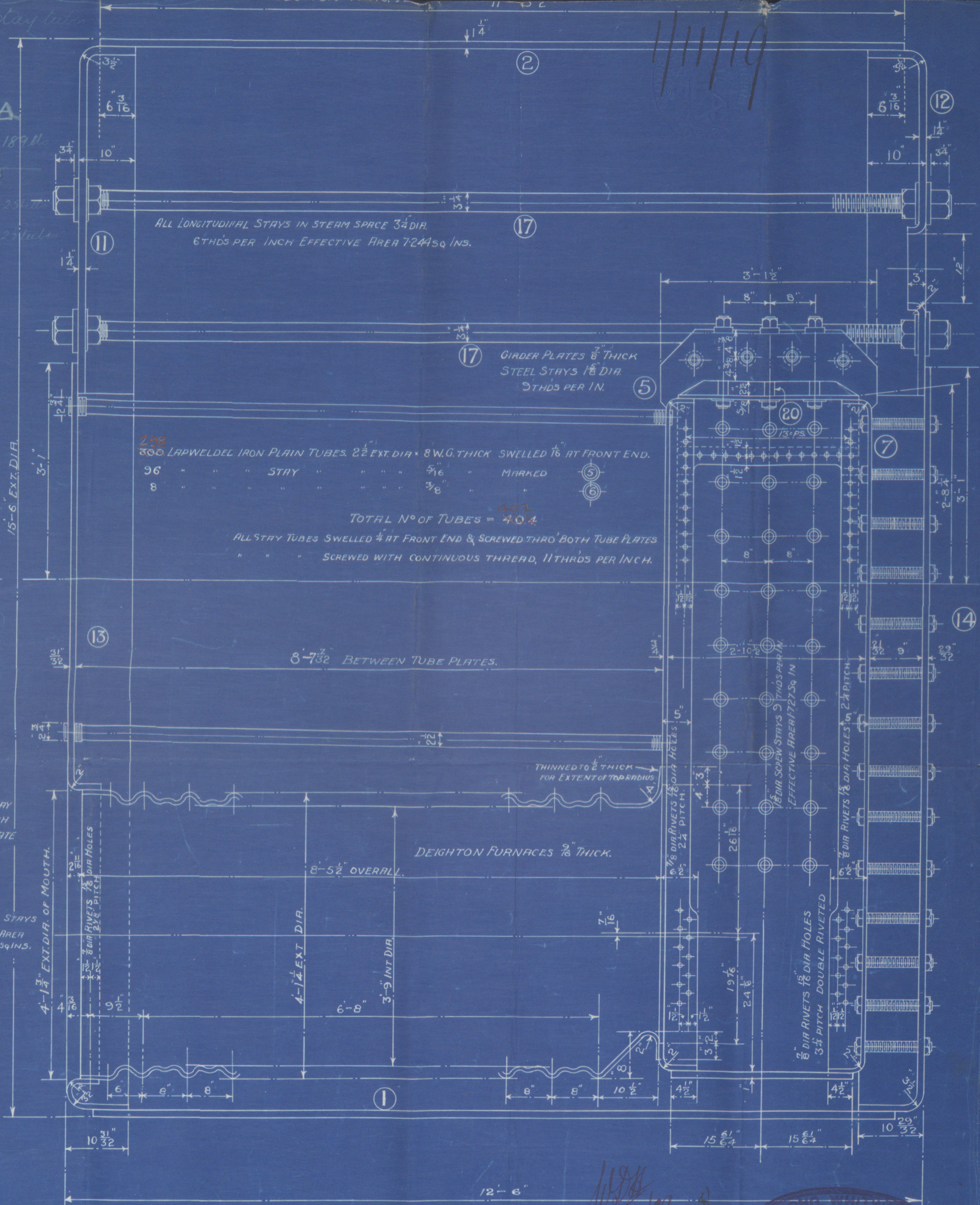
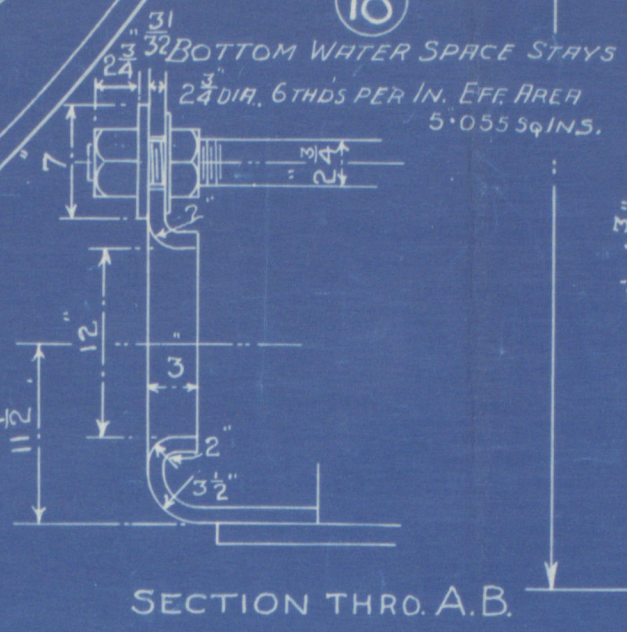
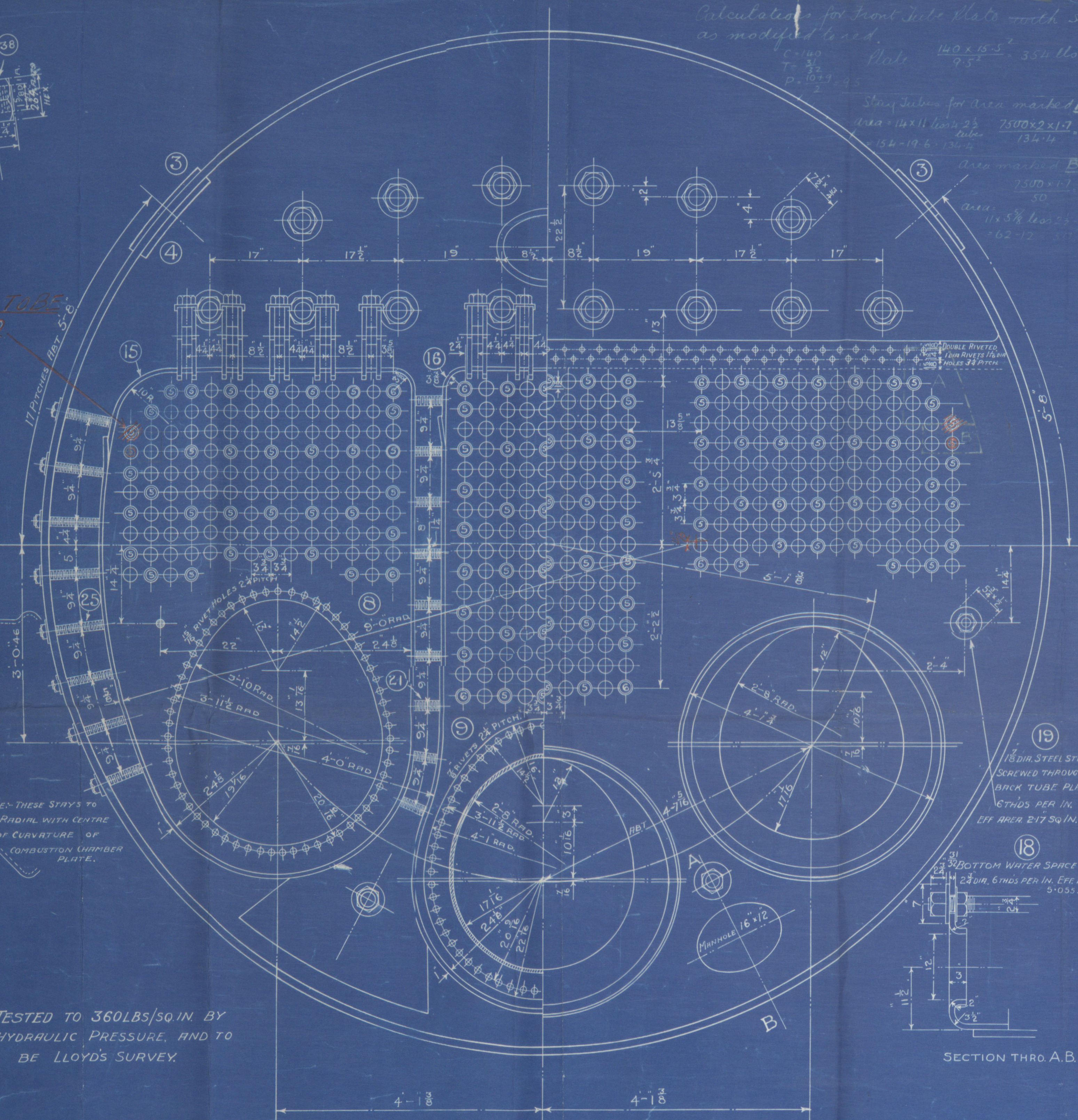


THIS TUBE TO BE OMITTED



WING COMBUSTION CHAMBER.
SIDE VIEW.

TESTED TO 360 LBS/SQ IN BY
HYDRAULIC PRESSURE, AND TO
BE LLOYD'S SURVEY.



MODIFICATION TO STAY TUBES

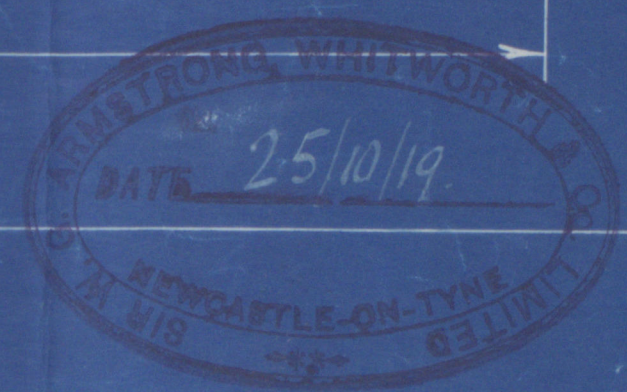
MARINE MULTITUBULAR BOILER.

15'-6" EXT. DIA. 12'-6" LONG. WORKING PRESSURE 180 LBS/SQ. IN.

SCALE 1/12 TH

ORDER AND W.N. ME 18/102-106.

DWG. NO. 35299 M



W 200-0108

8145

3/18/38



© 2019

Lloyd's Register
Foundation

Uncl. Steel main hoists ME18
by

Sir W.G. Armstrong Whitworth & Co Ltd
for their 966 vessel

180 lbs W.P.

Showing amended arrangement of tubes

Navemar
ex

S.S. "FROGNER"

NEWCASTLE ON TYNE.

Report No. 44944.

H/200-0108



© 2019

Lloyd's Register
Foundation