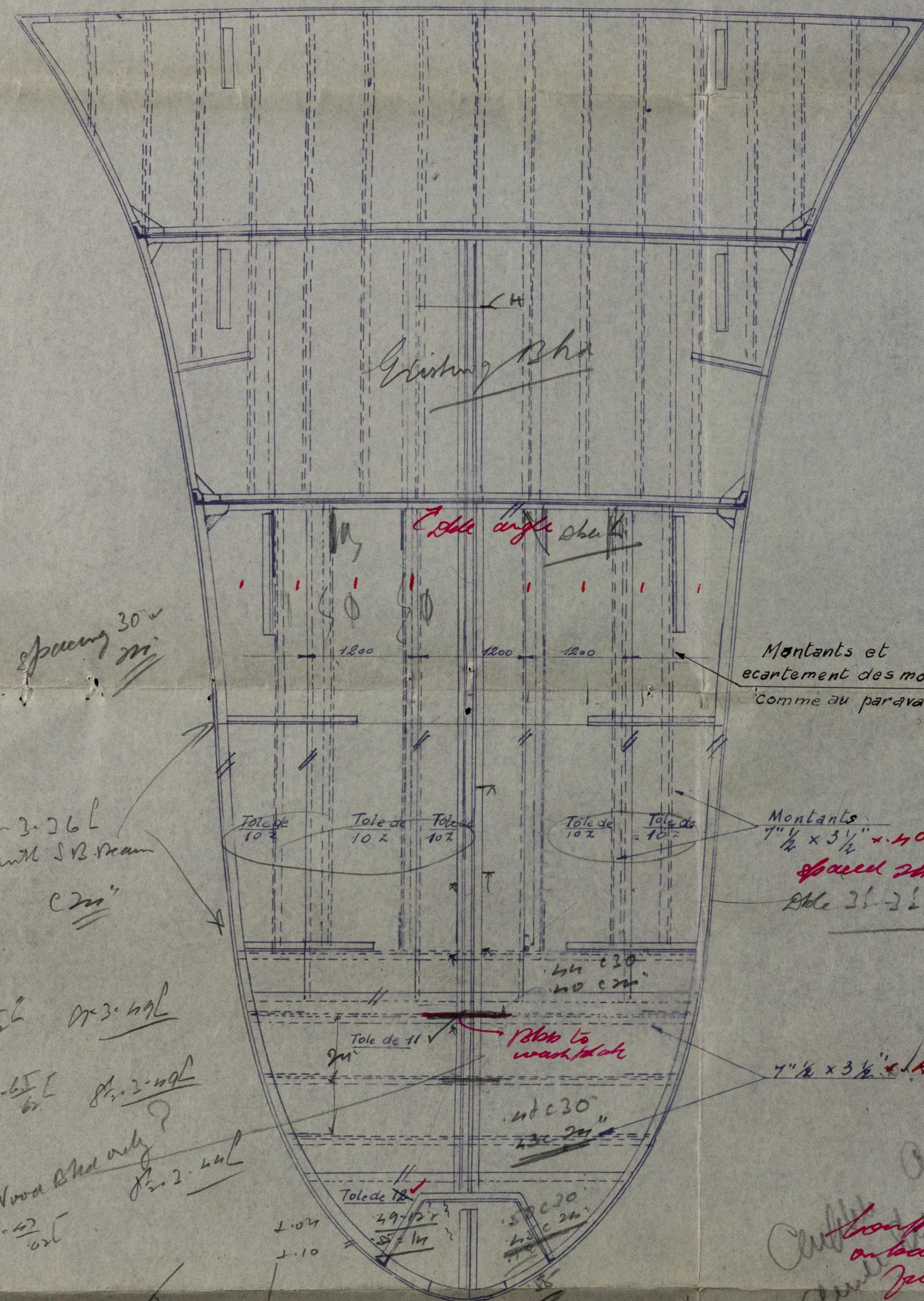


*Free*

# S.S NAVEMAR.

## Peak avant et cloison d'abordage

Echelle  $\frac{1}{48}$

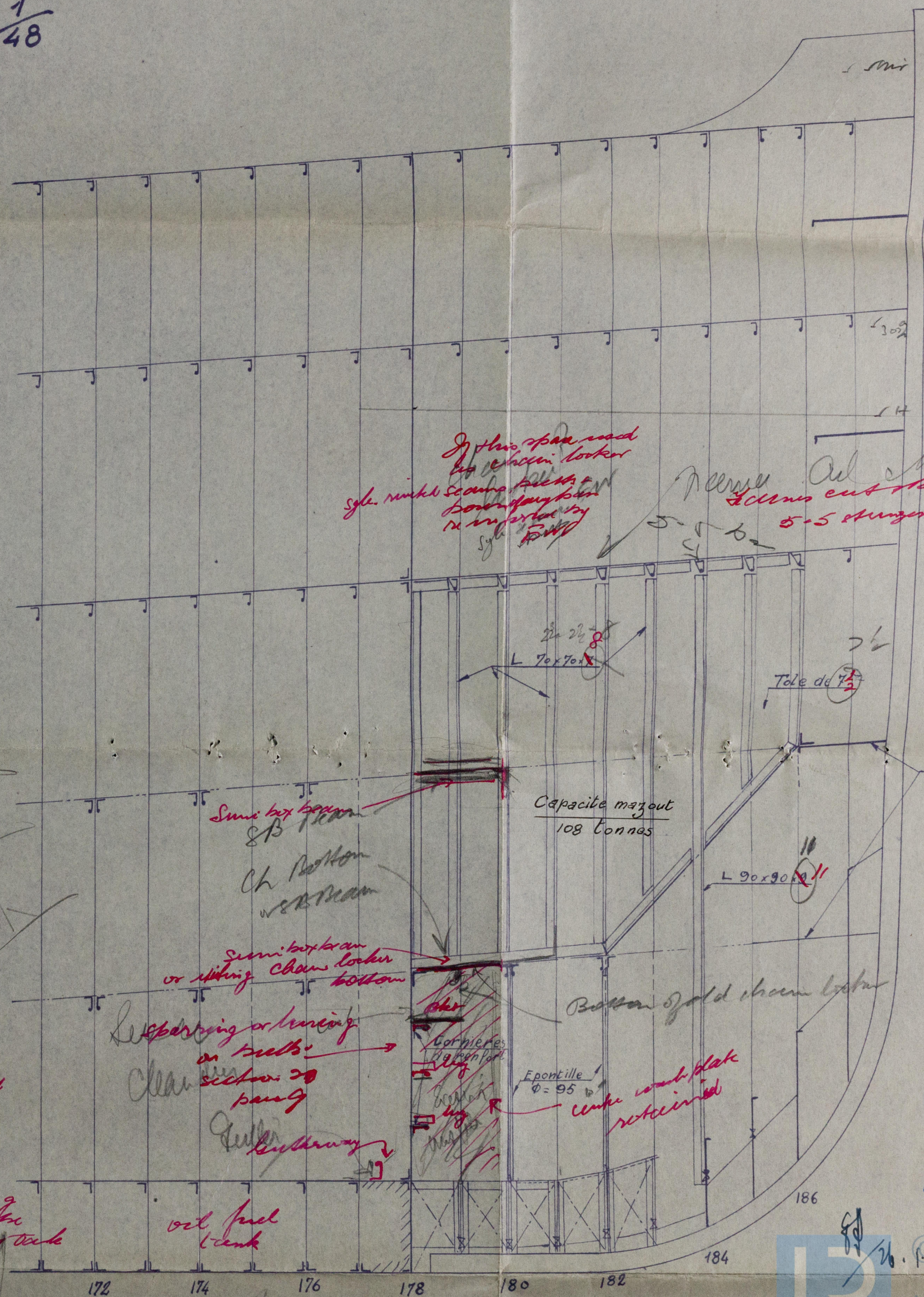


*spacing 30"*  
*12-3-26 L*  
*with S.B. beam*  
*C 2 1/2"*  
*12-3-30 L*  
*12-4-30 L*  
*12-4-30 L*  
*Wood Rha only?*  
*12-4-30 L*  
*12-4-30 L*

*Montants 7 1/2 x 3 1/2 x 40 Rha 1/2" section spaced 24" apart Rha 3 1/2 x 3 1/2 with 1/2"*

*7 1/2 x 3 1/2 x 40 Rha each end*

*Longitudinal on bottom Rha 1/2" section 20 para 20*



*Splice Rha made by chain locker*  
*Splice Rha made by chain locker*  
*Splice Rha made by chain locker*  
*Splice Rha made by chain locker*

*Splice Rha made by chain locker*  
*Splice Rha made by chain locker*  
*Splice Rha made by chain locker*  
*Splice Rha made by chain locker*

*Série 4 et 5*

*Capacité max out 108 tonnes*

*Série 4 et 5*  
*Voir plan de construction*

*Supporting or bracing on bulkhead*

*Bottom gold chain beam*

*Epontille Ø = 95*



24.1.33.



Four Peak Tank.  
S.S. "Havemar".



24.1.33.

Mol. reg. No. 8132.

XI 200-0095

SOCIÉTÉ DES ATELIERS TERRIN  
40, Boul. Maritime, MARSEILLE

DESSIN : N° 11  
SÉRIE : 5071  
Date : 28 JAN. 1933



© 2019

Lloyd's Register  
Foundation