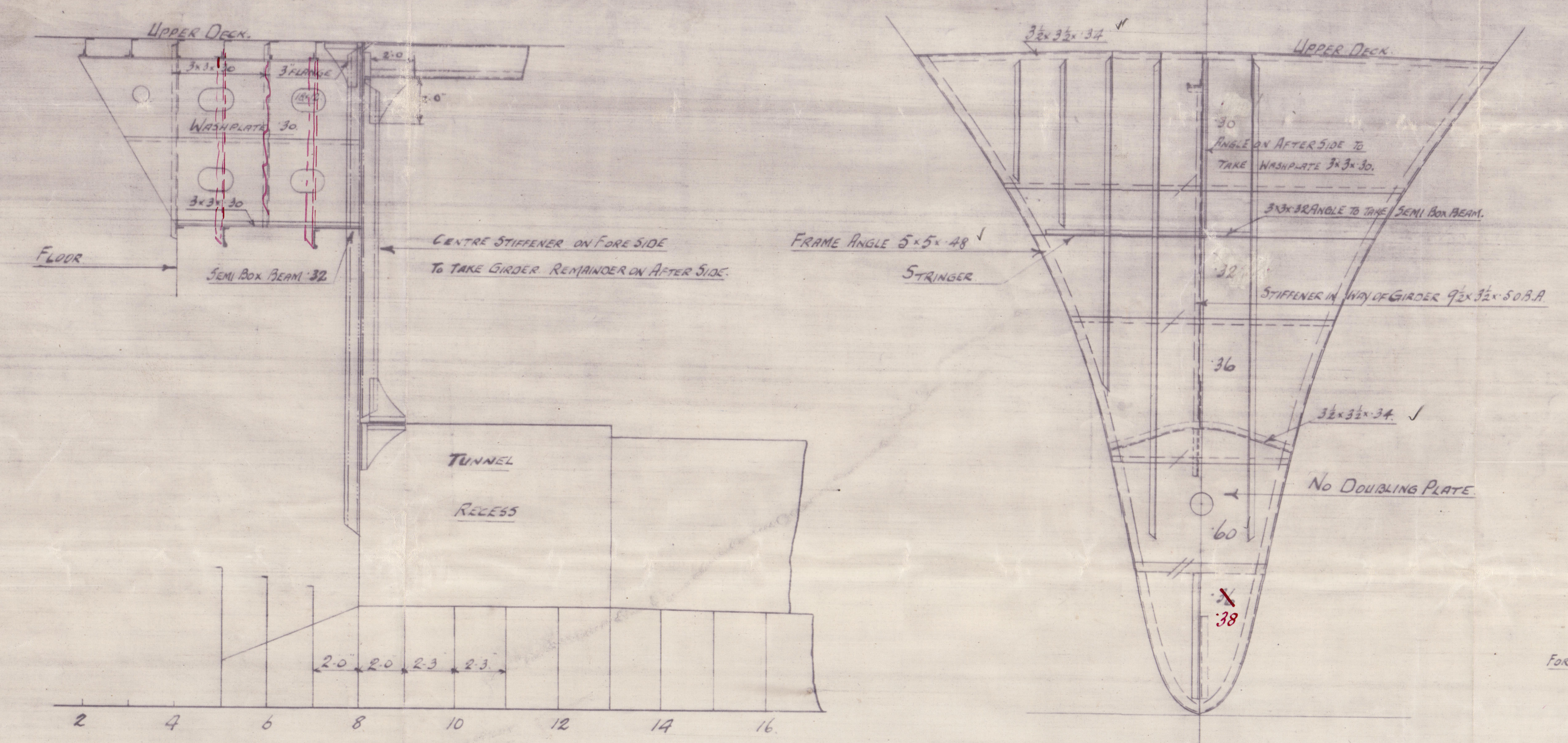


16.5.13

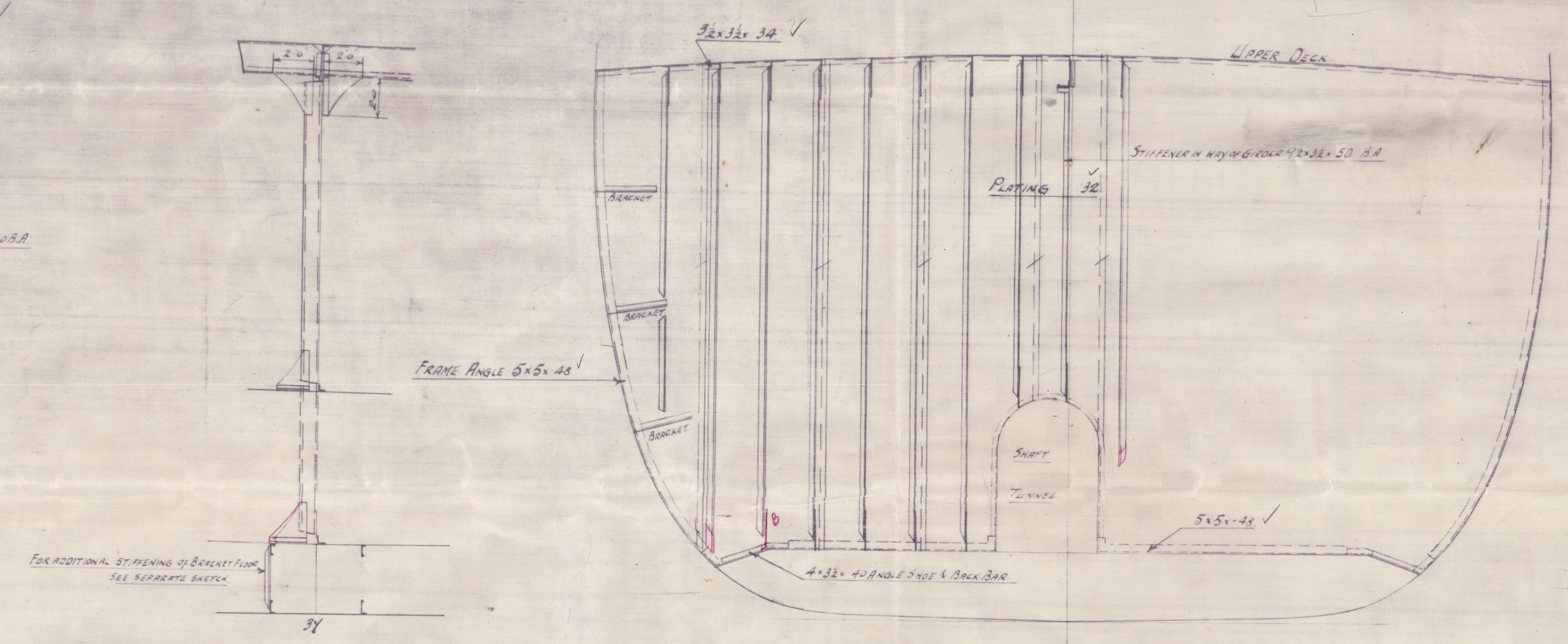
N<sup>o</sup> 216.  
W.T. BULKHEADS.

SCALE 1/4" = 1' FOOT

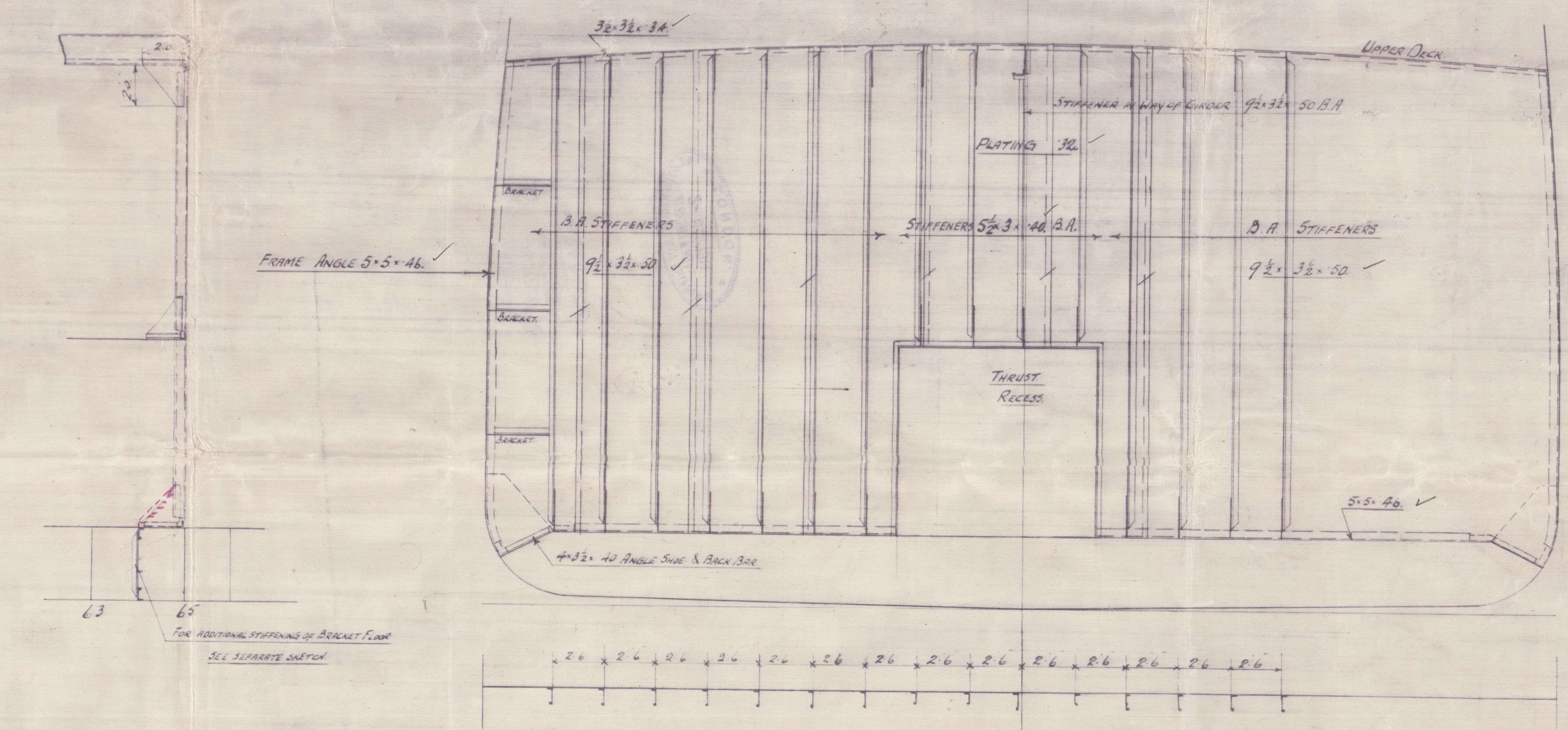
WT BULKHEAD N<sup>o</sup> 8.  
LOOKING FORWARD.



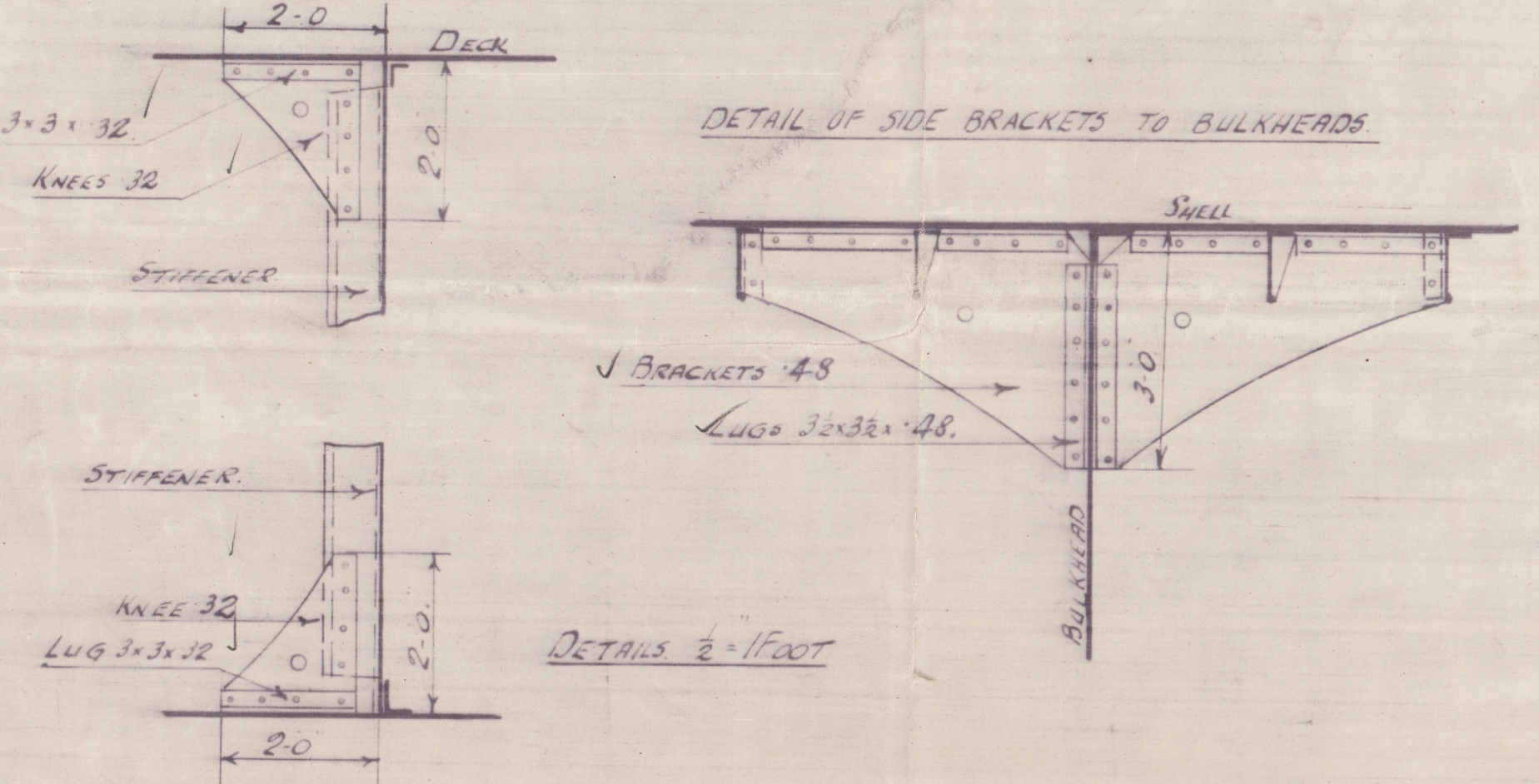
WT BULKHEAD N<sup>o</sup> 37.  
LOOKING FORWARD.



WT BULKHEAD N<sup>o</sup> 65.  
LOOKING FORWARD.

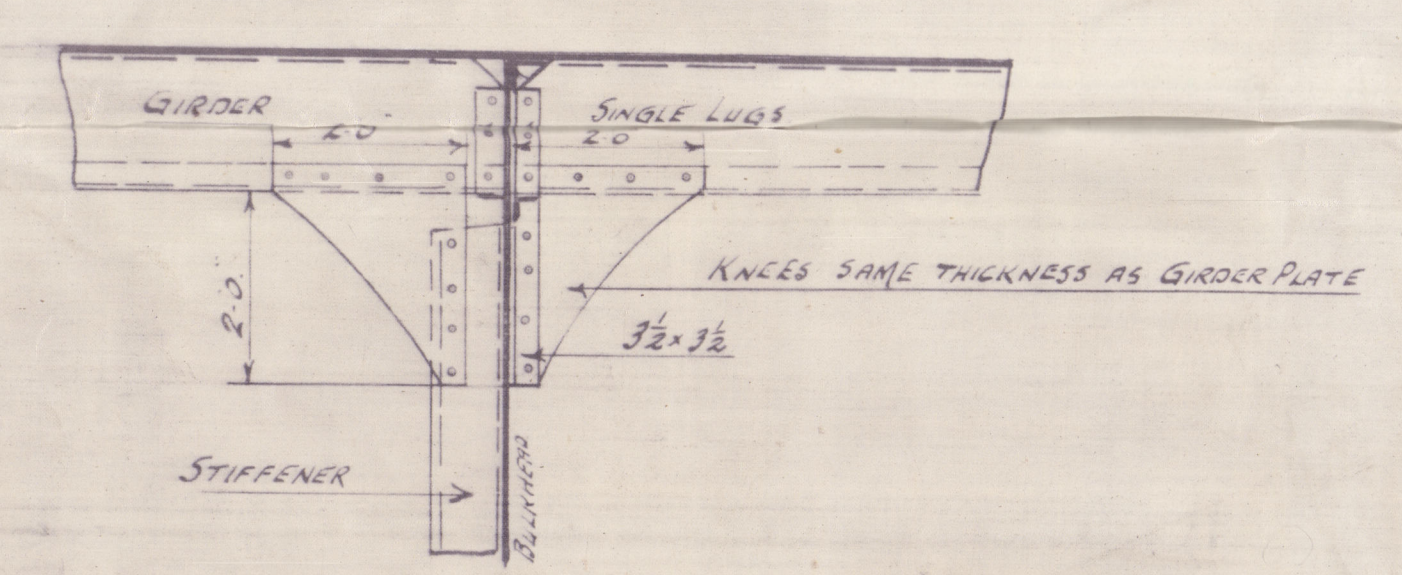


DETAIL OF KNEES ON STIFFENERS.

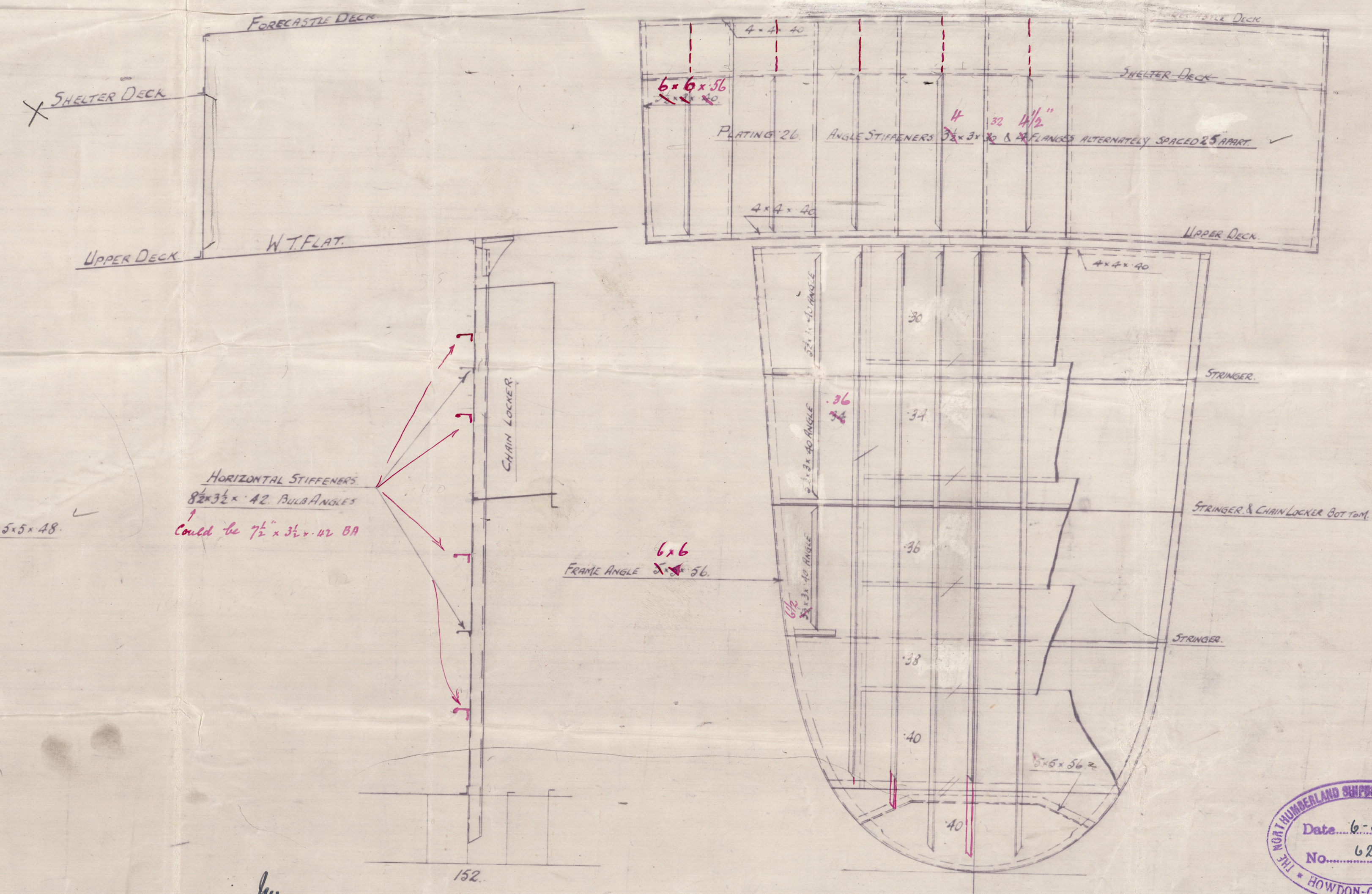
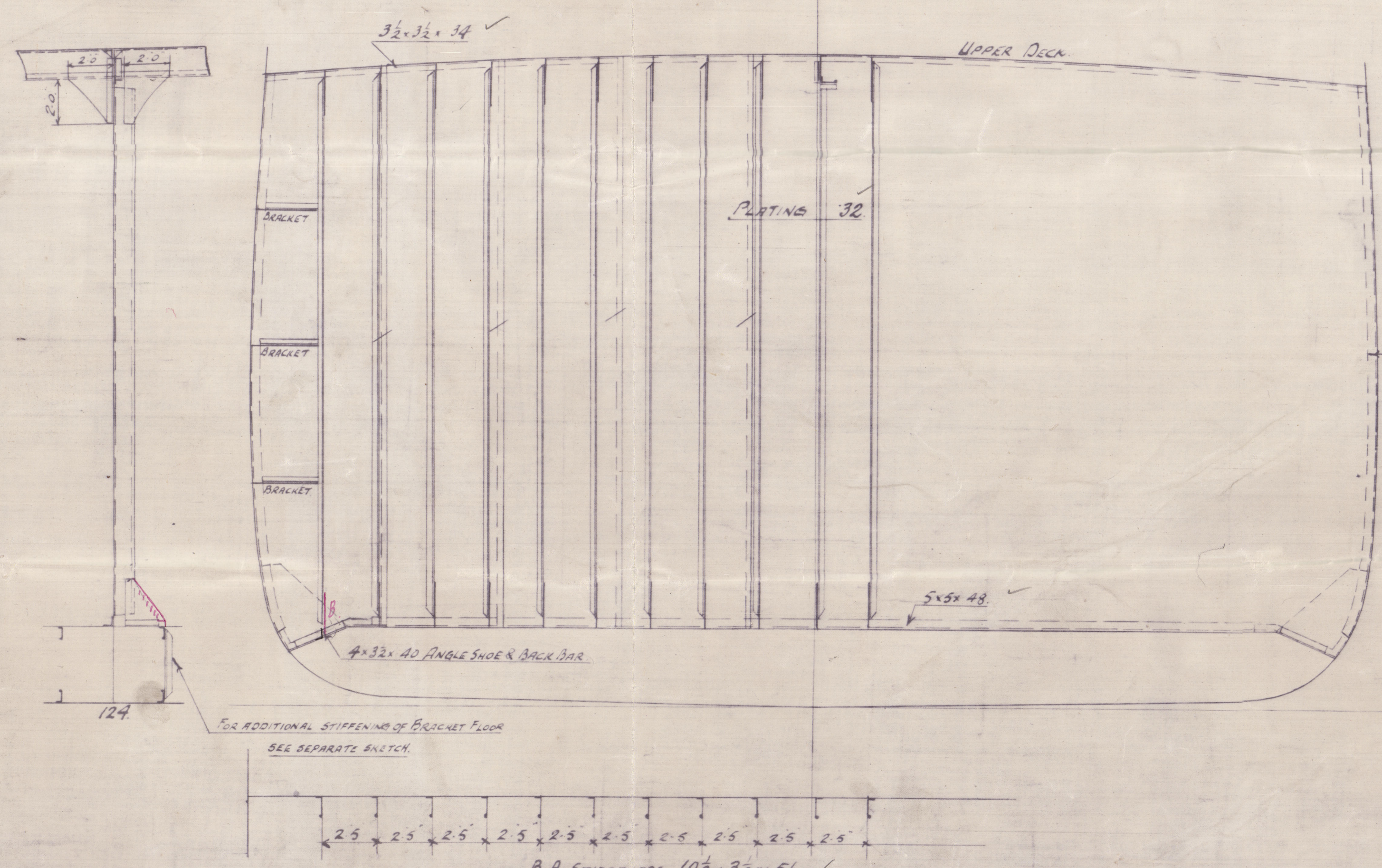


Bulk Angle Stiffeners  
5x3x40  
8x3x50

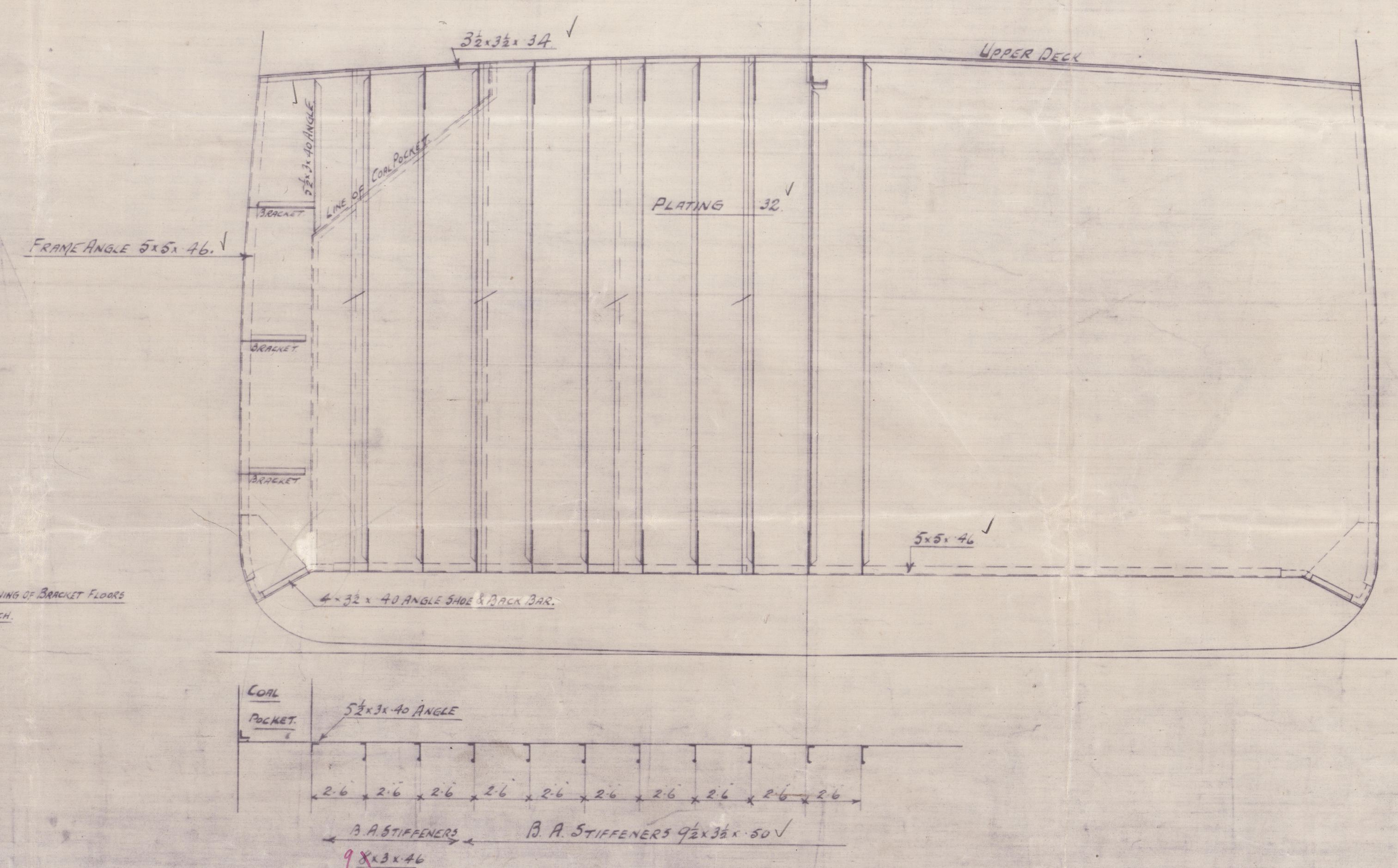
GIRDER CONNECTION TO BULKHEAD



WT BULKHEAD N<sup>o</sup> 124.  
LOOKING AFT.



WT BULKHEAD N<sup>o</sup> 85.  
LOOKING AFT.

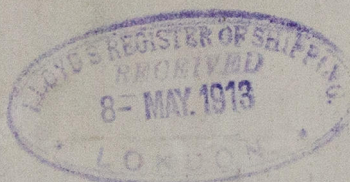


16.5.13





Wuthenbury 8/3 to  
P. L. B. B. B. B. B.  
No 216



"Chelabro."

ex

S.S. MAGDALA

NEWCASTLE-ON-TYNE

Report No 65937



© 2019

Lloyd's Register  
Foundation

020-0089