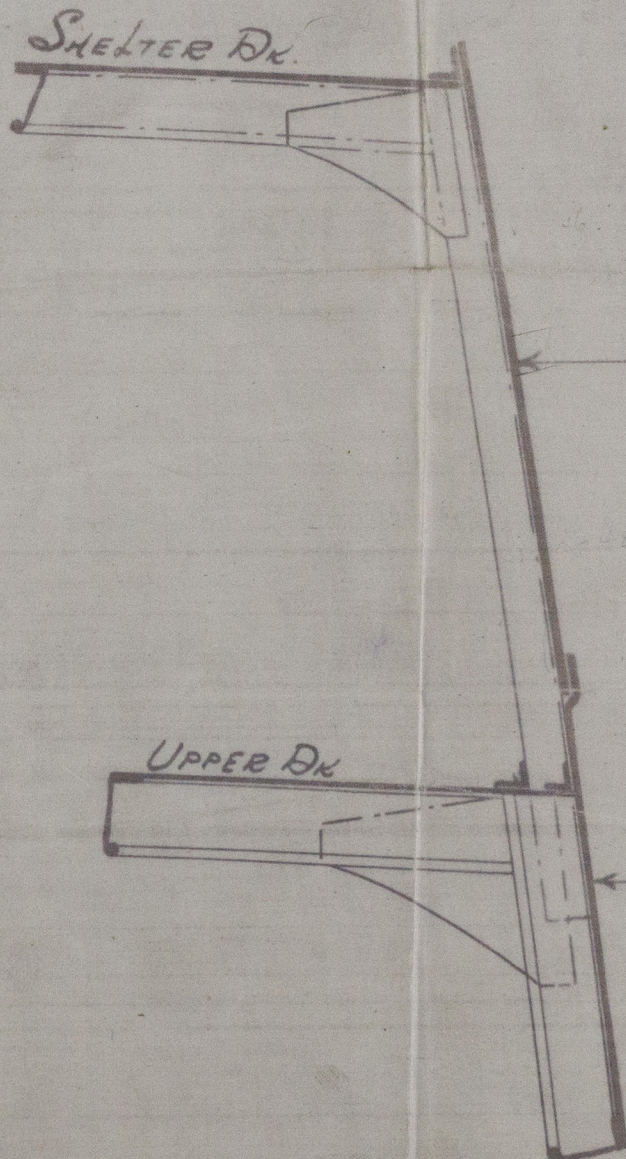


S. S. No 216

PROPOSED MODIFICATION OF
SHEERSTRAKE & STRAKE BELOW.

9.5.13.

$\frac{1}{2}$ " SCALE.

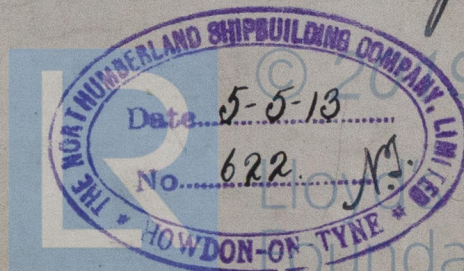


$\cdot 64$
L STRAKE IN. 89. ~~62~~ TO 44.

Butts quadruple, riveted for $\frac{1}{2}$ L.
Quadruple to Triple riveted at ends

K. STRAKE OUT. 75. 66 TO 50.

44 IN PEAKS.



Arthurthunderland S.B. Co. Ltd

No 216

Lloyds

MAY 13 1913

Modification to shear shake +
shake below, showing one shake
in place of two

Chelabros

S.S. MAGDALA

NEWCASTLE-ON-TYNE

Report No 65937



W20-0070



© 2019

Lloyd's Register
Foundation